

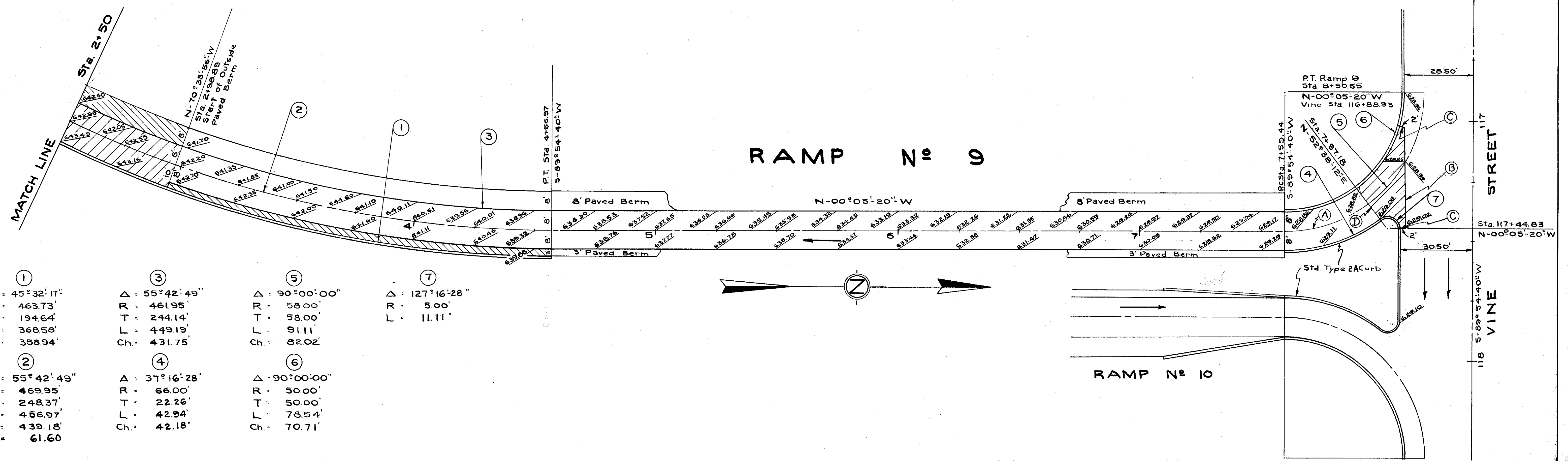
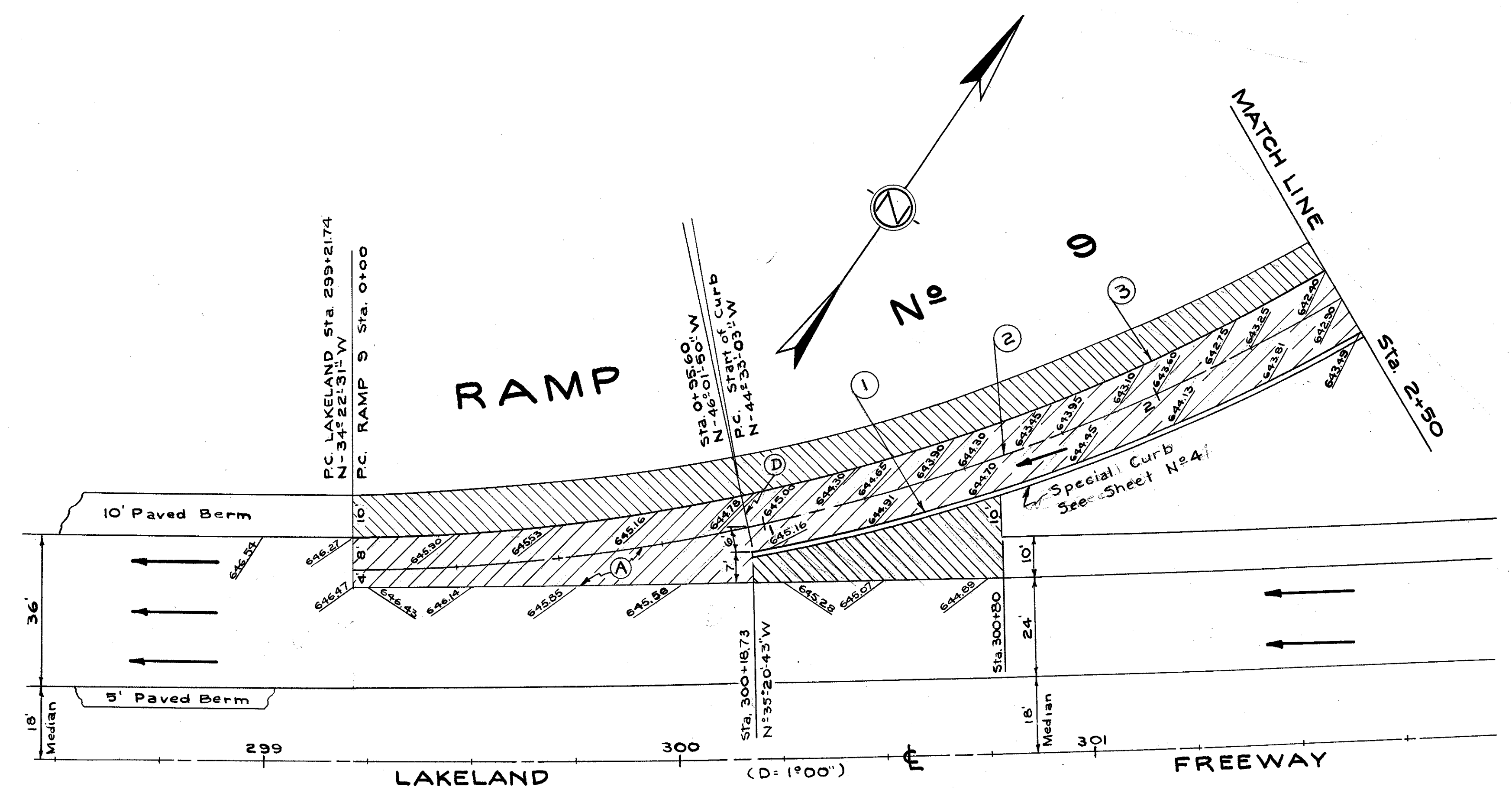
# EXTRA AREA DETAIL-RAMP N° 9

SCALE 1"=20'

LAKE COUNTY  
LAK-2-0.00

EXTRA AREA QUANTITIES						
LOCATION	T-71 10' REINF. PORT. CEMENT CONC. PAVT. SQ. YDS.	I-22 SUBBASE CU. YDS.	B-33 BIT. MACAD- AM. BASE COURSE SQ. YDS.	I-18 STABILIZED CRUSHED AGGREGATE CU. YDS.	SPECIAL CURB LIN. FT.	I-12 TYPE 2A CURB LIN. FT.
0+00 to 0+95.60	157	26				
300+18.78 to 300+80		14	82	16		
0+95.60 to 4+56.97					368.6	
0+95.60 to 2+98.89	361	60				
0+00 to 2+98.89		44	290	42		
2+98.89 to 4+56.97		8	45	9		
7+97.18 to 8+50.55	51	9				57.3
<b>TOTAL</b>	<b>569</b>	<b>161</b>	<b>417</b>	<b>67</b>	<b>368.6</b>	<b>57.3</b>

- LEGEND**
- NEW PAVEMENT
  - PAVED BERM
  - (A) Standard Longitudinal Joint
  - (B) Standard Key Joint Without Tie Bars
  - (C) Expansion Joint Without Dowels
  - (D) Standard Expansion Joint



- |               |               |               |                |
|---------------|---------------|---------------|----------------|
| (1)           | (3)           | (5)           | (7)            |
| Δ = 45°32'17" | Δ = 55°42'49" | Δ = 90°00'00" | Δ = 127°16'28" |
| R = 463.73'   | R = 461.95'   | R = 58.00'    | R = 5.00'      |
| T = 194.64'   | T = 244.14'   | T = 58.00'    | L = 11.11'     |
| L = 368.56'   | L = 449.19'   | L = 91.11'    |                |
| Ch. = 358.94' | Ch. = 431.75' | Ch. = 82.02'  |                |
| (2)           | (4)           | (6)           |                |
| Δ = 55°42'49" | Δ = 37°16'28" | Δ = 90°00'00" |                |
| R = 469.95'   | R = 66.00'    | R = 50.00'    |                |
| T = 248.37'   | T = 22.26'    | T = 50.00'    |                |
| L = 456.97'   | L = 42.94'    | L = 78.54'    |                |
| Ch. = 439.18' | Ch. = 42.18'  | Ch. = 70.71'  |                |
| E = 61.60'    |               |               |                |