

EXTRA AREA DETAIL - RAMP N° 6

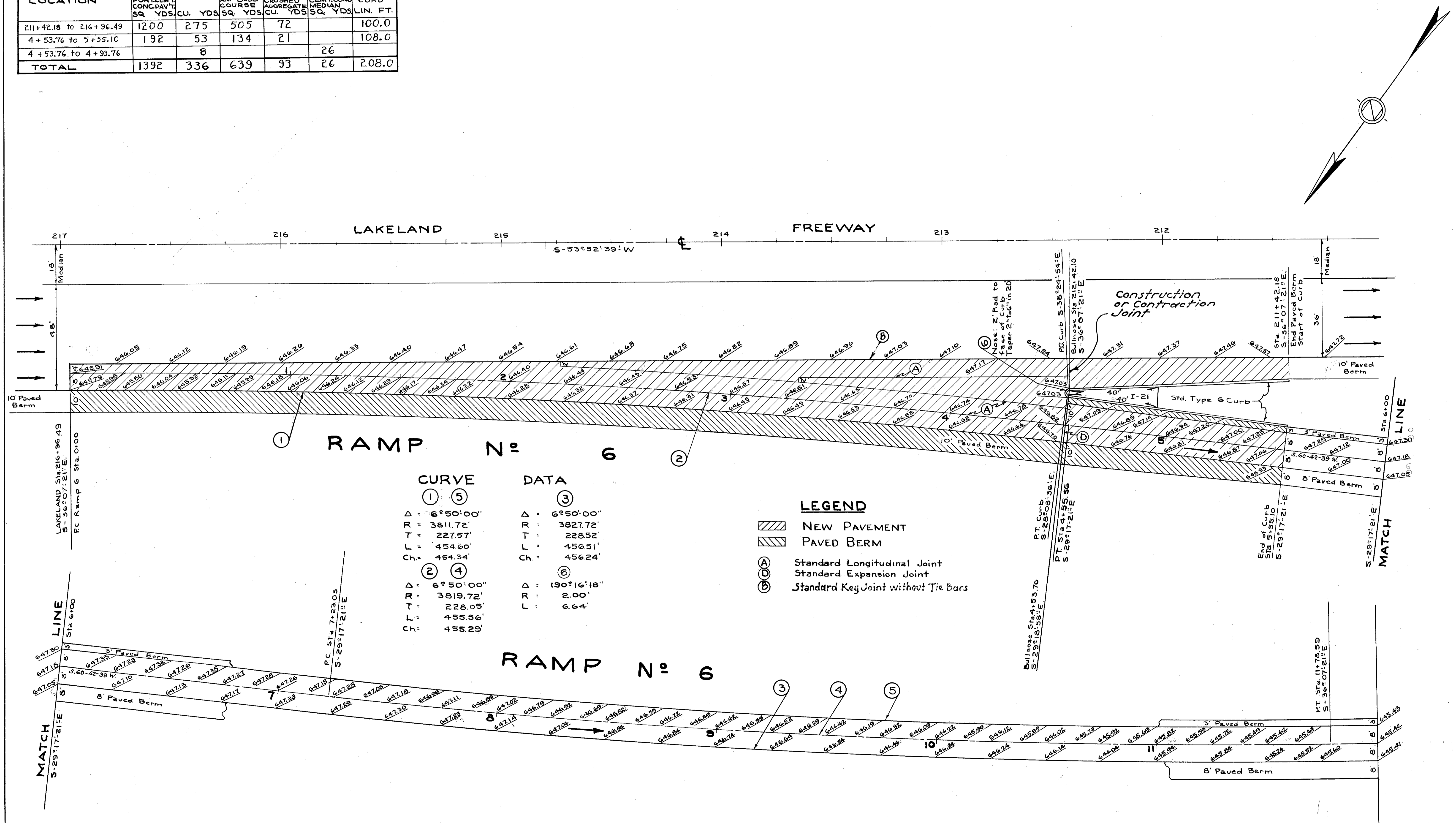
SCALE 1" = 20'

FED. RD. DIVISION	STATE	PROJECT	FISCAL YEAR
2	OHIO		

94
394

LAKE COUNTY
LAK-2-0.00

EXTRA AREA QUANTITIES						
LOCATION	T-71	I-22	B-33	I-18	I-21	I-12
	10" REINF. PORTCEM'T CONC. PAV'T SQ. YDS.	SUBBASE CU. YDS.	BIT. MACAD. AM. BASE COURSE SQ. YDS.	STABILIZED CRUSHED AGGREGATE CU. YDS.	4" PORT. CEMT. CONC. MEDIAN SQ. YDS.	TYPE 6 CURB LIN. FT.
211+42.18 to 216+96.49	1200	275	505	72		100.0
4+53.76 to 5+55.10	192	53	134	21		108.0
4+53.76 to 4+93.76		8			26	
TOTAL	1392	336	639	93	26	208.0



RAMP N° 6

CURVE DATA	
①	⑤
Δ: 6°50'00"	Δ: 6°50'00"
R: 3811.72'	R: 3827.72'
T: 227.57'	T: 228.52'
L: 454.60'	L: 456.51'
Ch: 454.34'	Ch: 456.24'
②	④
Δ: 6°50'00"	Δ: 6°50'00"
R: 3819.72'	R: 3819.72'
T: 228.05'	T: 228.05'
L: 455.56'	L: 455.56'
Ch: 455.29'	Ch: 455.29'
③	⑥
Δ: 190°16'18"	Δ: 190°16'18"
R: 2.00'	R: 2.00'
L: 6.64'	L: 6.64'

- LEGEND**
- NEW PAVEMENT
 - PAVED BERM
 - (A) Standard Longitudinal Joint
 - (D) Standard Expansion Joint
 - (B) Standard Key Joint without Tie Bars

RAMP N° 6