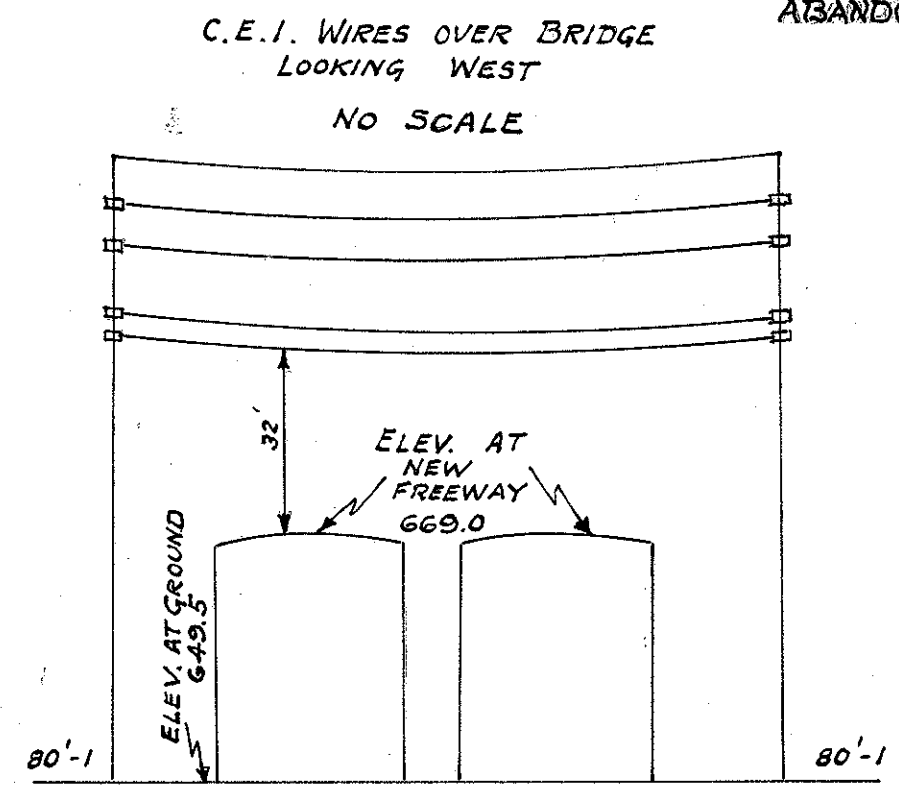
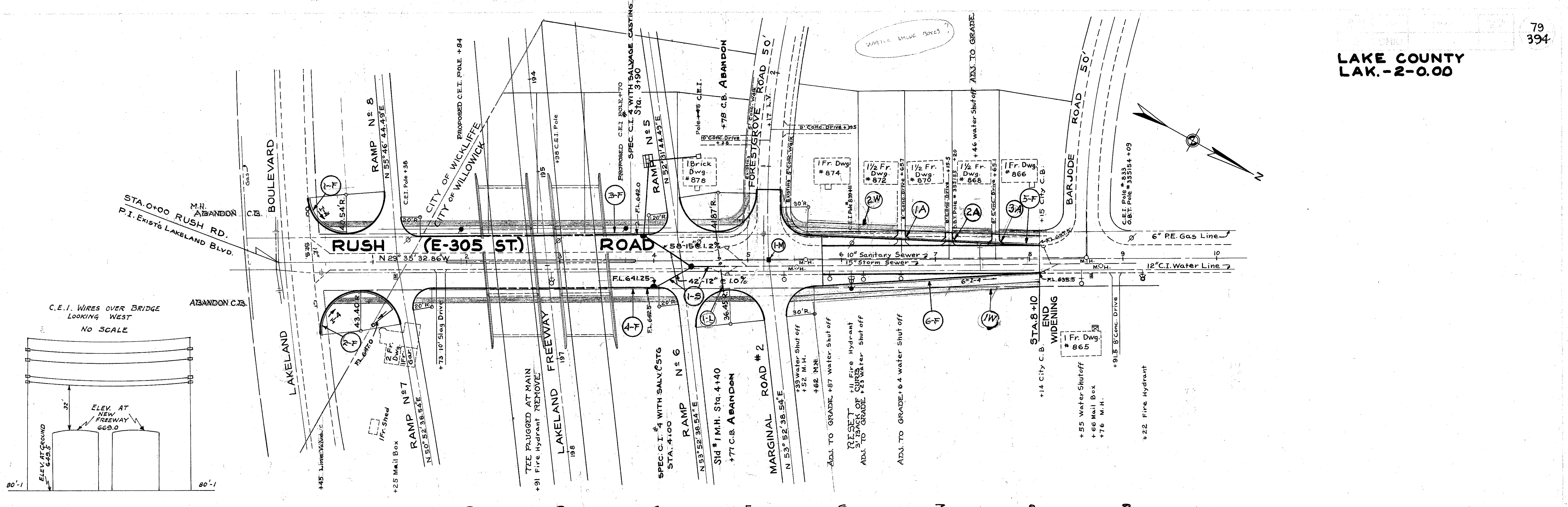


LAKE COUNTY  
LAK.-2-0.00



**SIDEWALK QUANTITIES**

REF. No.	LOCATION	E-8 Removal # Disposal of Existing Walk	I-13 5'x4\"/>	
1-W	0+60-8+10	R	0	3255
2-W	0+60-8+10	L	1950	3420
<b>TOTALS</b>			<b>1950</b>	<b>6675</b>

**DRIVEWAY QUANTITIES**

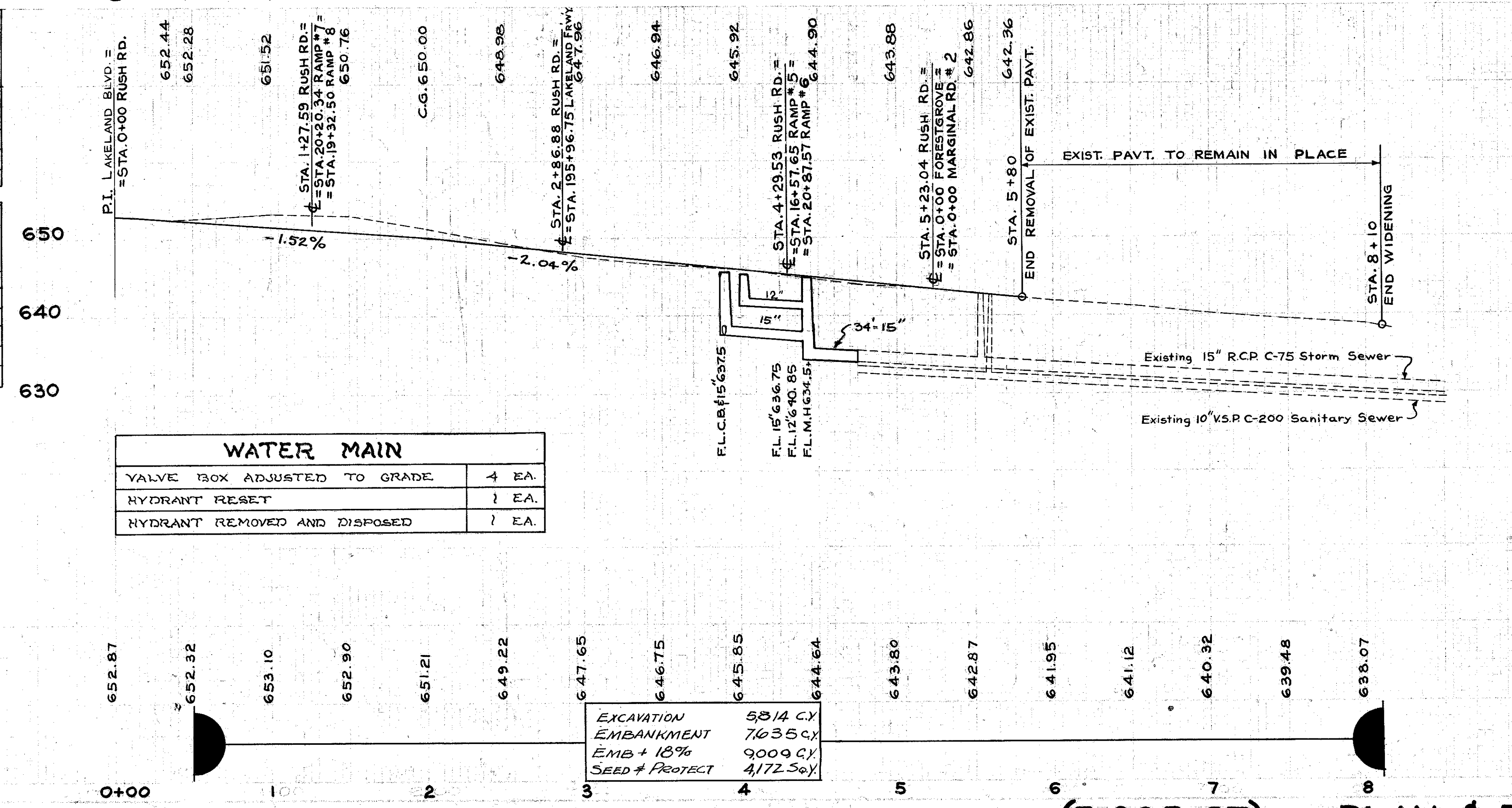
REF. No.	LOCATION	E-8 Removal # Disposal of Existing Conc.	T-70 7\"/>		
1-A	6+65.7	L	16	10.6	1
2-A	7+15.5	L	14	10.6	1
3-A	7+65.1	L	13	10.6	1
<b>TOTALS</b>			<b>43</b>	<b>31.8</b>	<b>3</b>

**MONUMENT BOXES**

ITEM No.	STATION	MONUMENT BOX ASSEMBLY TYPE A	TYPE B
1-M	5+23.04	1	1

**S-25 ELECTRICAL DUCT**

REF. No.	LOCATION	SIZE	LENGTH
1-L	STA 4+70	2-4\"/>	



**WATER MAIN**

VALVE BOX ADJUSTED TO GRADE	4 EA.
HYDRANT RESET	1 EA.
HYDRANT REMOVED AND DISPOSED	1 EA.

EXCAVATION	5814 C.Y.
EMBANKMENT	7635 C.Y.
EMB + 18%	9009 C.Y.
SEED & PROTECT	4172 Sq.Y.

**STORM SEWERS**

REF. No.	STATION	SIDE	CLASS	LN. FT.	I-8 EACH	I-16 EACH	ABANDON
1-S	3+90 TO 4+75	BOOTH	12\"/>				
2-S	4+75 TO 5+62	BOOTH	12\"/>				
<b>TOTALS</b>				<b>42</b>	<b>92</b>	<b>1</b>	<b>2</b>

**6\"/>**

REF. No.	STATION	SIDE	I-4 SHALLOW	LN. FT.	I-5 EACH
1-F	0+35 TO 0+73	L	56		
2-F	0+40 TO 1+20	R	130	10	1
3-F	1+52 TO 3+90	L	238		
4-F	1+64 TO 4+00	R	236		
5-F	5+35 TO 8+14	L	310		
6-F	5+70 TO 8+14	R	244		
<b>TOTALS</b>			<b>1214</b>	<b>10</b>	<b>1</b>

(E-305 ST.) PLAN & PROFILE... RUSH RD. STA. 0+00 TO STA. 10+00