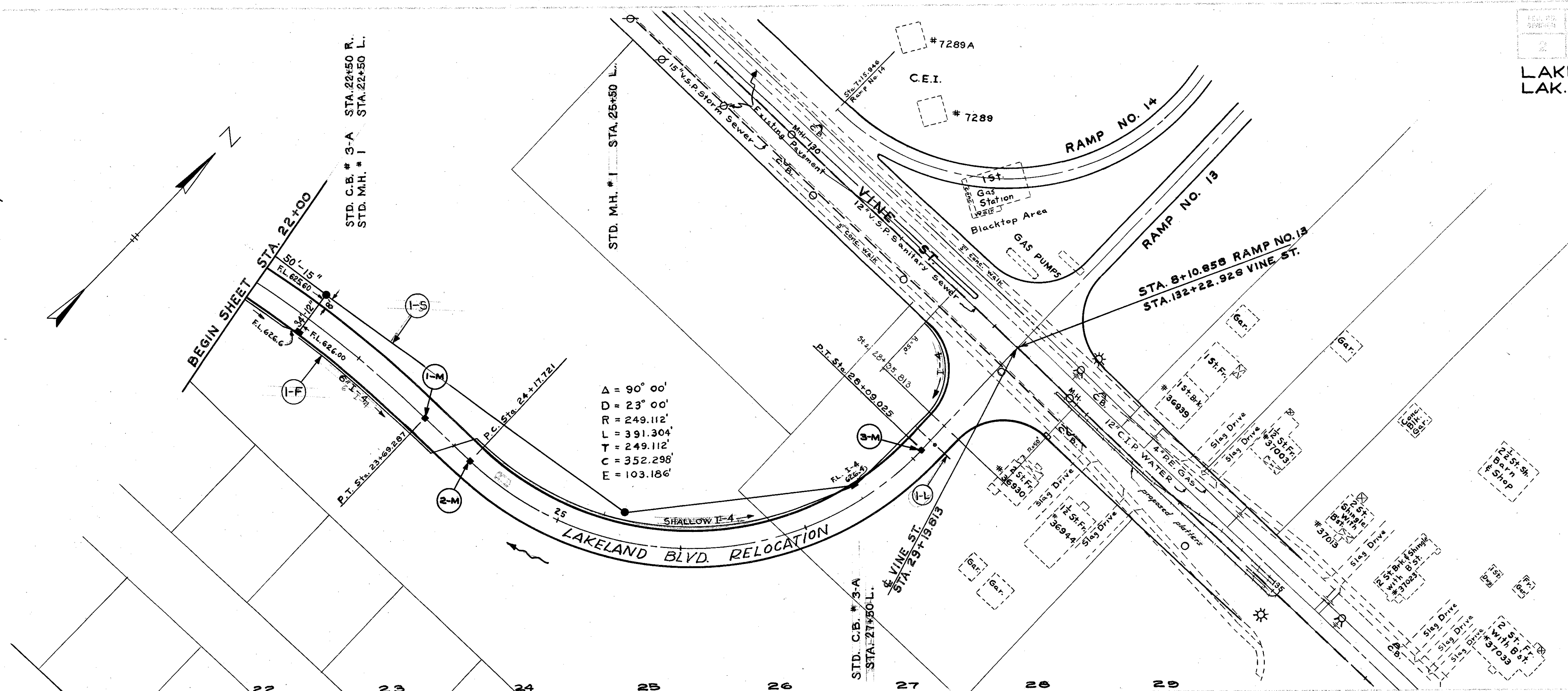


STA.	A	C	B
22+00	630.48	629.88	629.28
22+25	630.42	629.82	629.22
22+50	630.36	629.76	629.16
22+75	630.20	629.70	629.20
23+00	630.04	629.64	629.24
23+25	629.88	629.58	629.28
23+50	629.72	629.52	629.32
23+69.29	629.60	629.48	629.35
23+75	629.56	629.46	629.36
24+00	629.40	629.40	629.40
24+17.72	629.28	629.36	629.44
24+25	629.83	629.3	629.45
24+50	629.06	629.28	629.50
24+75	629.00	629.22	629.44
25+00	628.94	629.16	629.38
25+25	628.88	629.10	629.32
25+50	628.82	629.04	629.26
25+75	628.76	628.98	629.20
26+00	628.70	628.92	629.14
26+25	628.64	628.86	629.08
26+50	628.58	628.80	629.02
26+75	628.52	628.74	628.96
27+00	628.46	628.68	628.90
27+25	628.40	628.62	628.84
27+50	628.34	628.56	628.78
27+75	628.44	628.66	628.88
28+00	628.58	628.80	629.02
28+09.03			



MONUMENT BOXES		
ITEM NO.	STATION	MONUMENT BOX ASSEMBLY TYPE A TYPE B
1-M	PT 23+69.29	1
2-M	PC 24+17.72	1
3-M	PT 28+09.03	1
TOTALS		3

S-25 ELECTRICAL DUCT			
REF. NO.	LOCATION	SIZE	LENGTH
1-L	STA 28+20'	1-2" x 1-4"	33'

STORM SEWERS							
REF. NO.	STATION	SIDE R. or L.	I-2 LIN. FT. CLASS B		I-8 EACH		
			UNDER PAV'T		STD. C.B. # 3-A	STD. M.H. # 1	
FROM	TO		12"	15"			
1-S	22+00	27+50	BOTH	34'	512'	2	2

6" UNDERDRAINS							
REF. NO.	STATION	SIDE R. or L.	I-4 LIN. FT. SHALLOW		I-5 EACH		
					6" 60° BENDS		
FROM	TO		6' 6"				
1-F	22+00	VINE ST.	BOTH	6' 6"		2	

640
630
620

