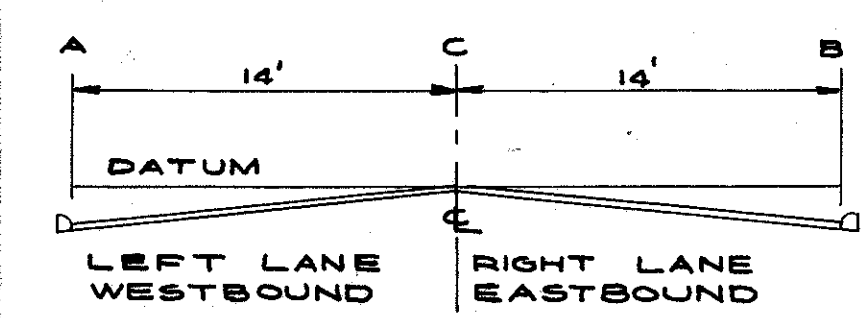
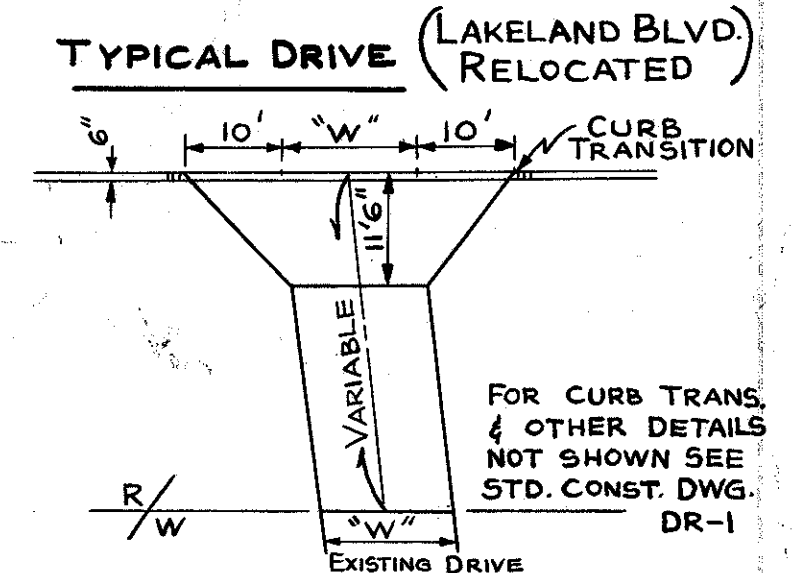
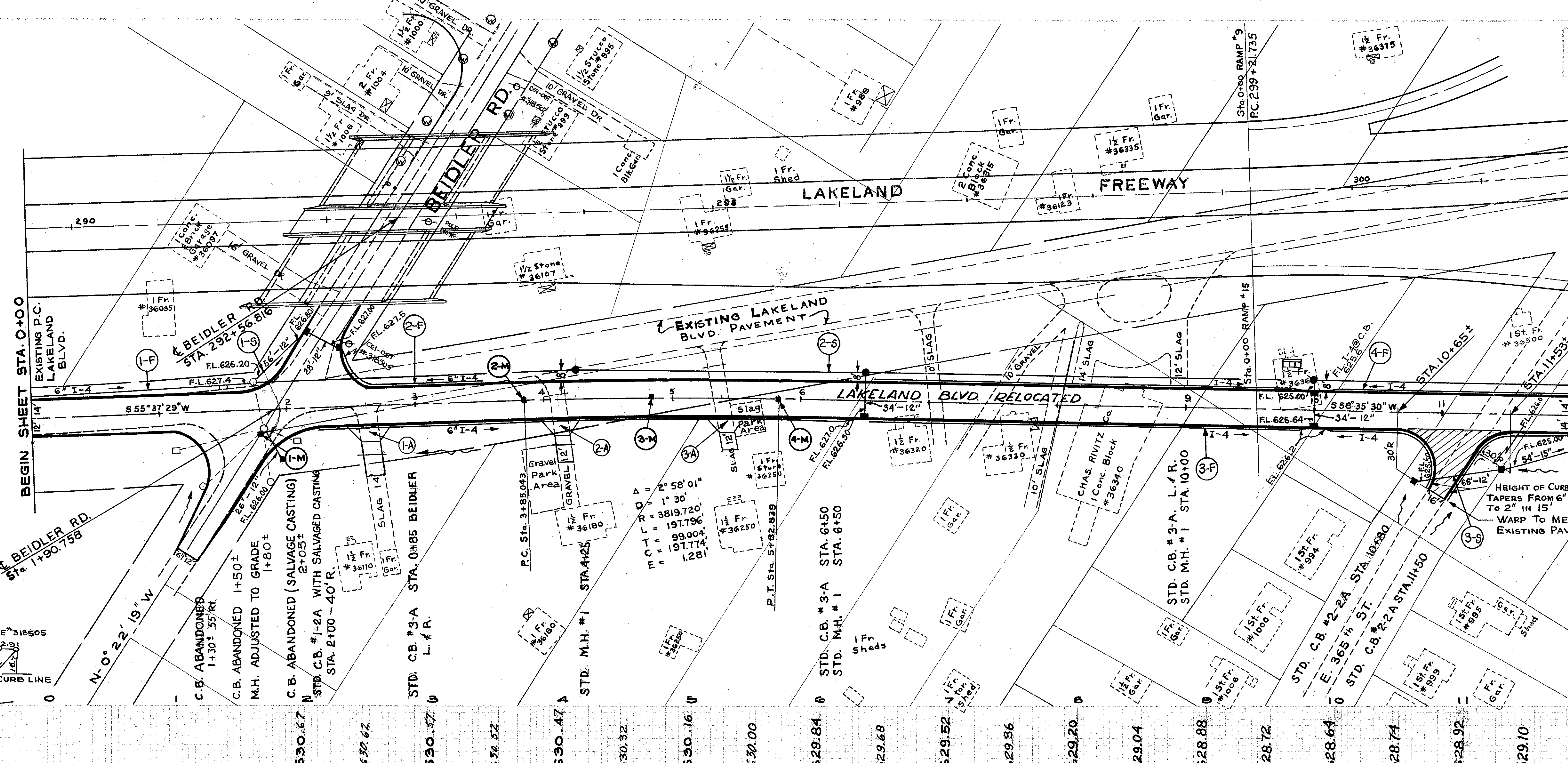


LAKE COUNTY
LAK -2-0.00

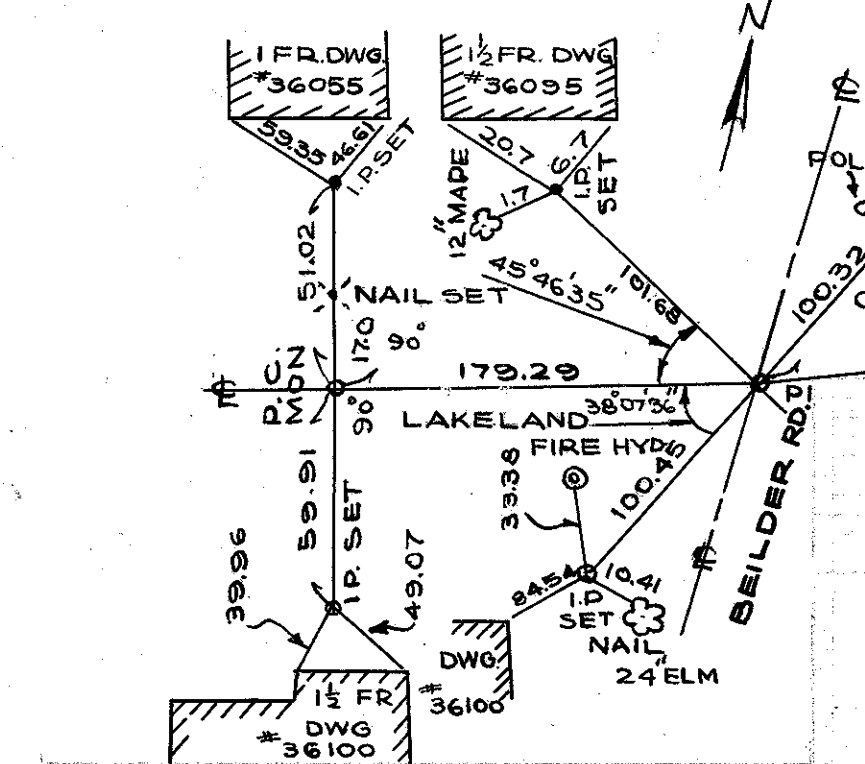


STA.	A	C	B
2+50	630.40	630.62	630.45
2+60.04	630.40	630.61	630.39
2+75.04	630.41	630.59	630.37
3+00	630.44	630.57	630.35
3+25	630.47	630.54	630.32
3+50	630.50	630.52	630.30
3+60.04	630.52	630.51	630.29
3+75	630.57	630.49	630.27
3+85.04	630.60	630.48	630.26
4+00	630.67	630.47	630.25
4+10.04	630.67	630.45	630.23
4+25	630.62	630.40	630.18
4+50	630.54	630.32	630.10
4+75	630.46	630.24	630.02
5+00	630.38	630.16	629.94
5+25	630.30	630.08	629.86
5+50	630.22	630.00	629.78
5+57.84	630.20	629.98	629.76
5+75	630.06	629.92	629.70
5+82.84	630.01	629.90	629.68
6+00	629.87	629.84	629.62
6+07.84	629.82	629.82	629.60
6+25	629.72	629.76	629.54
6+50	629.59	629.68	629.46
6+75	629.45	629.60	629.38
7+00	629.32	629.52	629.30
7+07.84	629.28	629.50	629.28
7+50	629.14	629.36	629.14



DRIVEWAY QUANTITIES

Item No	Side	Station	T-35 2" Pavt. CU.YD.	B-19 5" Subbase CU.YD.	E-1 Excavation CU.YD.	I-1 12" Pipe For Drive LIN.FT.
1-A	R	2+62	4.2	10.5	16	20
2-A	R	4+10	3.3	8.3	13	18
3-A	R	5+38	2.6	6.6	13	
TOTALS			10.1	25.4	42	38



SEE EXTRA AREA SHEET N^o 110
FOR INTERSECTION WITH BEIDLER RD.

STORM SEWERS

REF NO	STATION	SIDE	CLASS "B"						I-16	E-12		
			I-2	I-8	I-8	I-8	I-8	I-8				
1-5	1+75 TO 2+40	BOTH	15"	12"	12"	27"	27"	30"	1	2		
2-5	1+50 TO 12+00	L	54	56	90	157	771	1	3	1	2	
3-5	10+80 TO 12+00	R	54	66					2	3	1	
TOTALS			54	188	56	90	157	771	1	5	2	3

E 365th ST. QUANTITIES

T-71 10" Pavt. 5q.YD.	I-22 6" Subbase CU.YD.	I-12 Type 2-A LIN.FT.	E-1 Excavation CU.YD.
200	34	135	100

MONUMENT BOXES

ITEM NO.	STATION	MONUMENT BOX ASSEMBLY TYPE	TYPE B
1-M	EXISTING PI		1
2-M	PC 3+85.04		1
3-M	PI 4+83.93		1
4-M	PT 5+82.84		1
TOTALS			4

6" UNDERDRAINS

REF NO	STATION	SIDE	I-4 SHALLOW	I-5 8" OUTLET PIPE	I-5 6" x 6" TEE
1-F	0+00 TO 1+75	L	172		
2-F	2+40 TO 3+50	L	126		
3-F	2+25 TO 12+00	R	1008	20	1
4-F	6+55 TO 12+00	L	542		
TOTALS			1848	20	1

