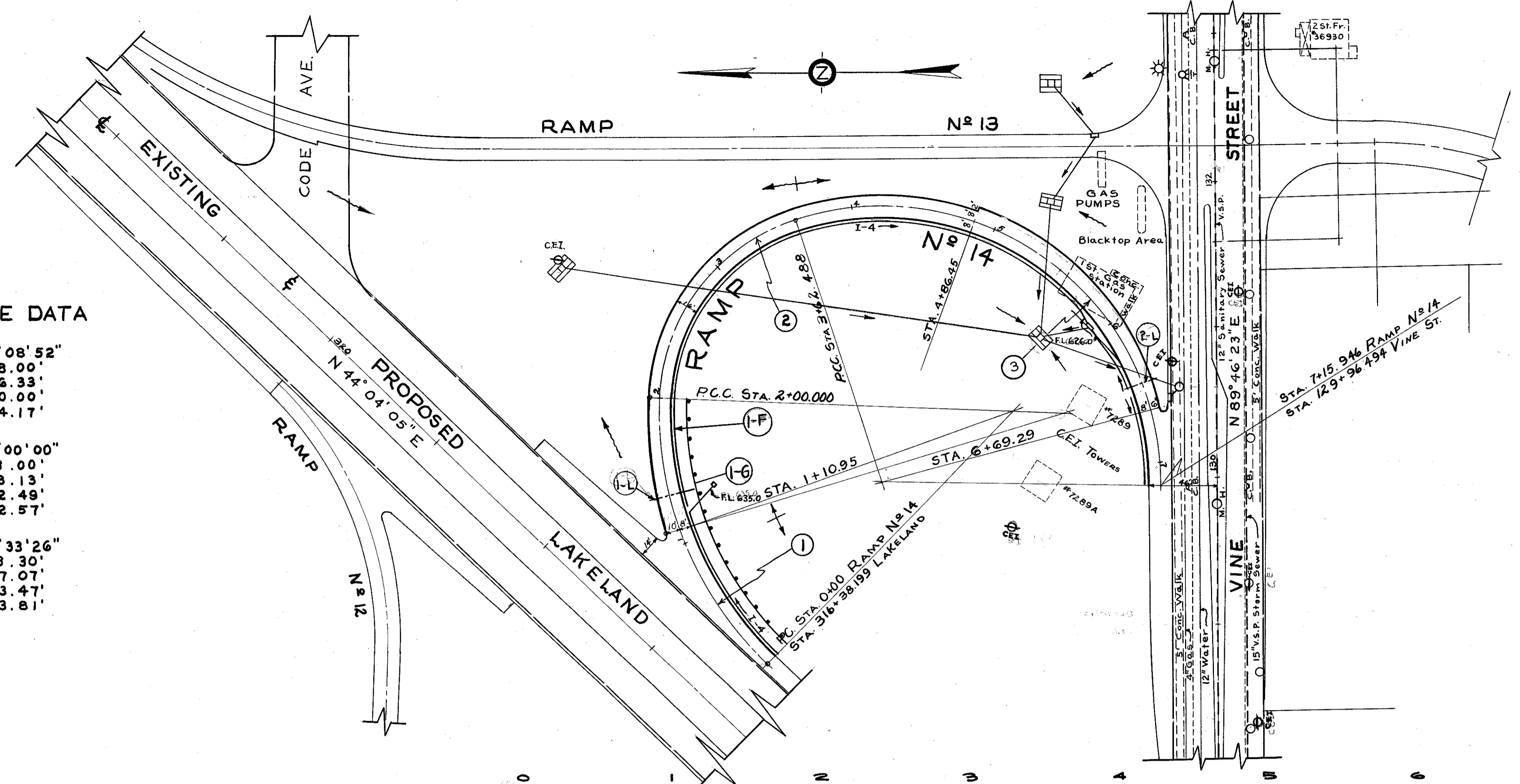


☉ CURVE DATA

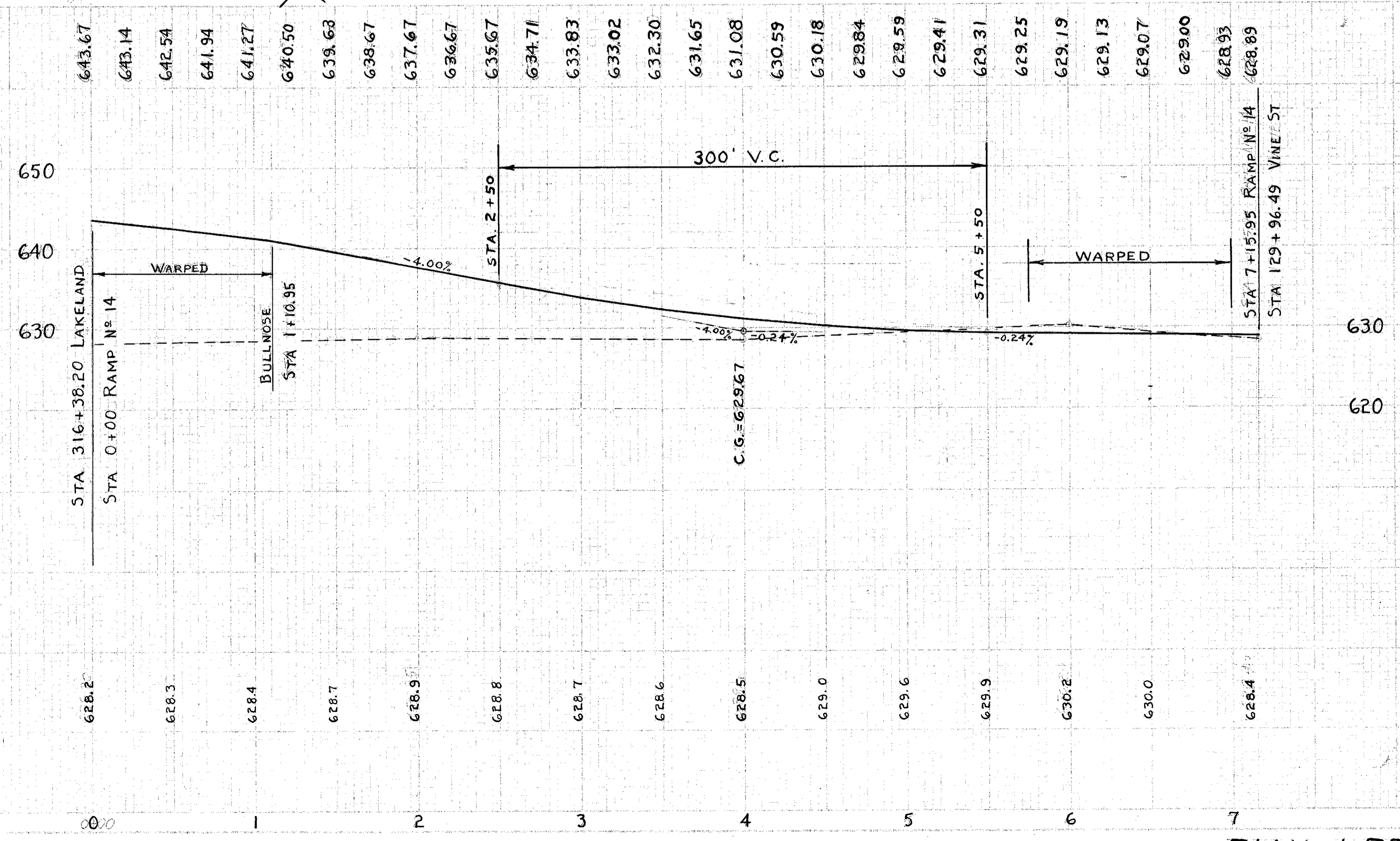
- ① Δ = 48° 08' 52"
R = 238.00'
T = 106.33'
L = 200.00'
Ch = 194.17'
- ② Δ = 70° 00' 00"
R = 133.00'
T = 93.13'
L = 162.49'
Ch = 152.57'
- ③ Δ = 107° 33' 26"
R = 188.30'
T = 257.07'
L = 353.47'
Ch = 303.81'



I-15 GUARD RAIL			
REF. N°	STATIONS	SIDE	N° 2-B STANDARD LIN. FT.
I-6	0+00 TO 2+00	R	182.0

6" UNDERDRAINS					
REF. N°	STATION	SIDE	I-4 LIN. FT.	I-5 EACH	
	FROM TO	R or L	SHALLOW	8" OUTLET PIPE	60° BEND
I-F	0+00 7+16	R	686	10	1

S-25 ELECTRICAL DUCT			
REF. N°	LOCATION	SIZE	LENGTH
			LIN. FT.
I-L	STA 1+35	2-2"	34
Z-L	STA 6+45	2-2"	20
TOTALS			54



STORM SEWERS FOR SHEET N° 43

REF. N°	STATION	SIDE R or L	I-2		I-5		I-8		EACH		I-10		PIPE REMOVED	
			CLASS	UNDER PAVT.	UNDER PAVT.	UNDER PAVT.	CLASS	UNDER PAVT.	CLASS	UNDER PAVT.	CLASS	UNDER PAVT.		
I-S	299+50	R	15"	15"	15"	18"	12"	15"	66"	66"	50 YDS	8"	12"	30"
I-S	299+50	R	20	42	2									
I-S	299+50	R	25	170										
I-S	302+00	L	108	67										
I-S	303+25	L	48											
I-S	295+00	L	43	290	42	12	67	2	4	3	316	40	244	1300
I-S	295+00	L	43	290	42	12	67	2	4	3	316	40	244	1300
TOTALS														

PLAN & PROFILE RAMP N° 14 STA. 0+00 to STA. 7+15.946