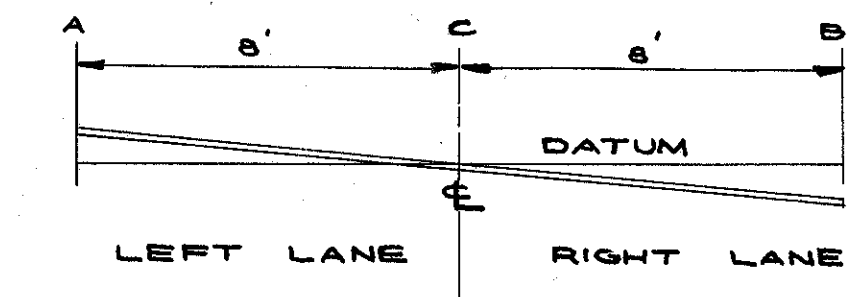
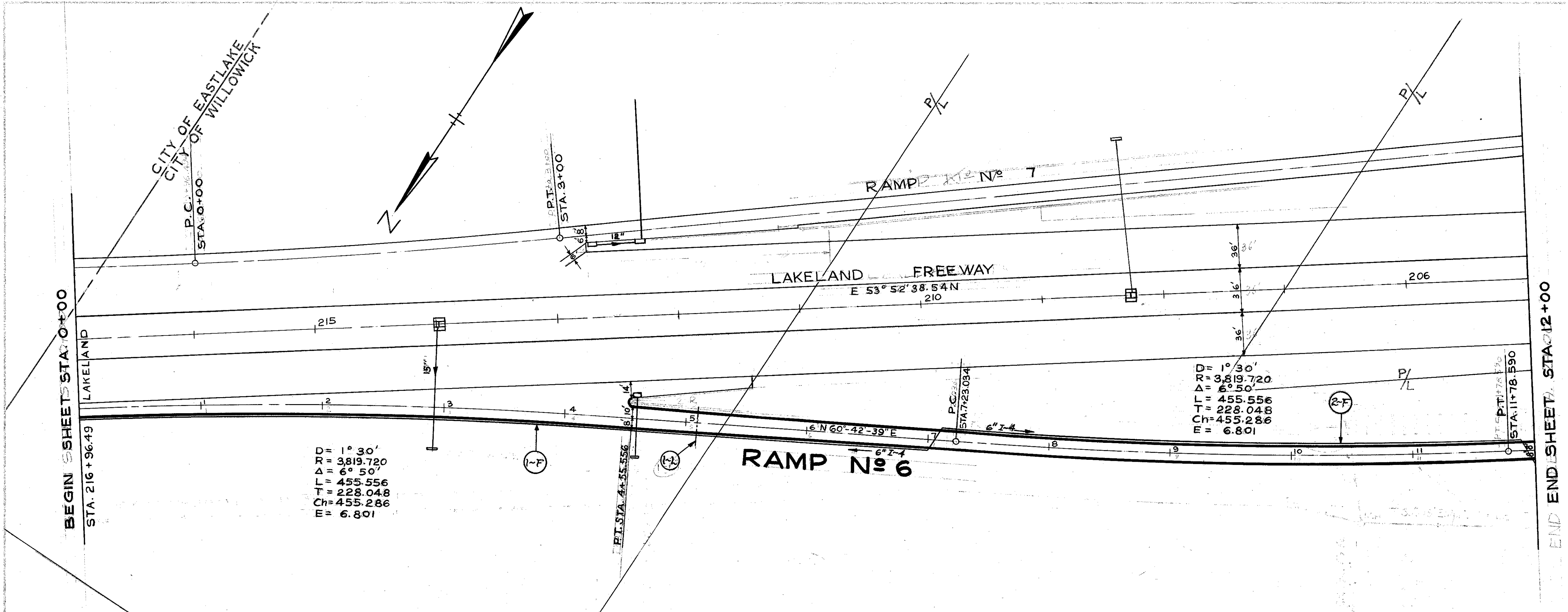


LAKE COUNTY
LAK. - 2-0.00



STA.	A	C	B
6+50	647.38	647.26	647.13
6+58.03	647.38	647.26	647.13
6+75	647.35	647.27	647.17
7+00	647.28	647.26	647.23
7+08.03	647.24	647.25	647.25
7+25	647.15	647.23	647.29
7+38.03	647.09	647.20	647.30
7+50	647.05	647.18	647.30
7+75	646.98	647.11	647.23
8+00	646.89	647.02	647.14
8+25	646.79	646.92	647.04
8+50	646.69	646.82	646.94
8+75	646.59	646.72	646.84
9+00	646.49	646.62	646.74
9+25	646.39	646.52	646.64
9+50	646.29	646.42	646.54
9+75	646.19	646.32	646.44
10+00	646.09	646.22	646.34
10+25	645.99	646.12	646.24
10+50	645.89	646.02	646.14
10+75	645.79	645.92	646.04
11+00	645.69	645.82	645.94
11+25	645.59	645.72	645.84
11+50	645.49	645.62	645.74
11+63.59	645.44	645.57	645.70
11+75	645.44	645.52	645.60
11+78.59	645.44	645.50	645.57
11+93.59	645.44	645.44	645.44
12+00	645.43	645.42	645.41

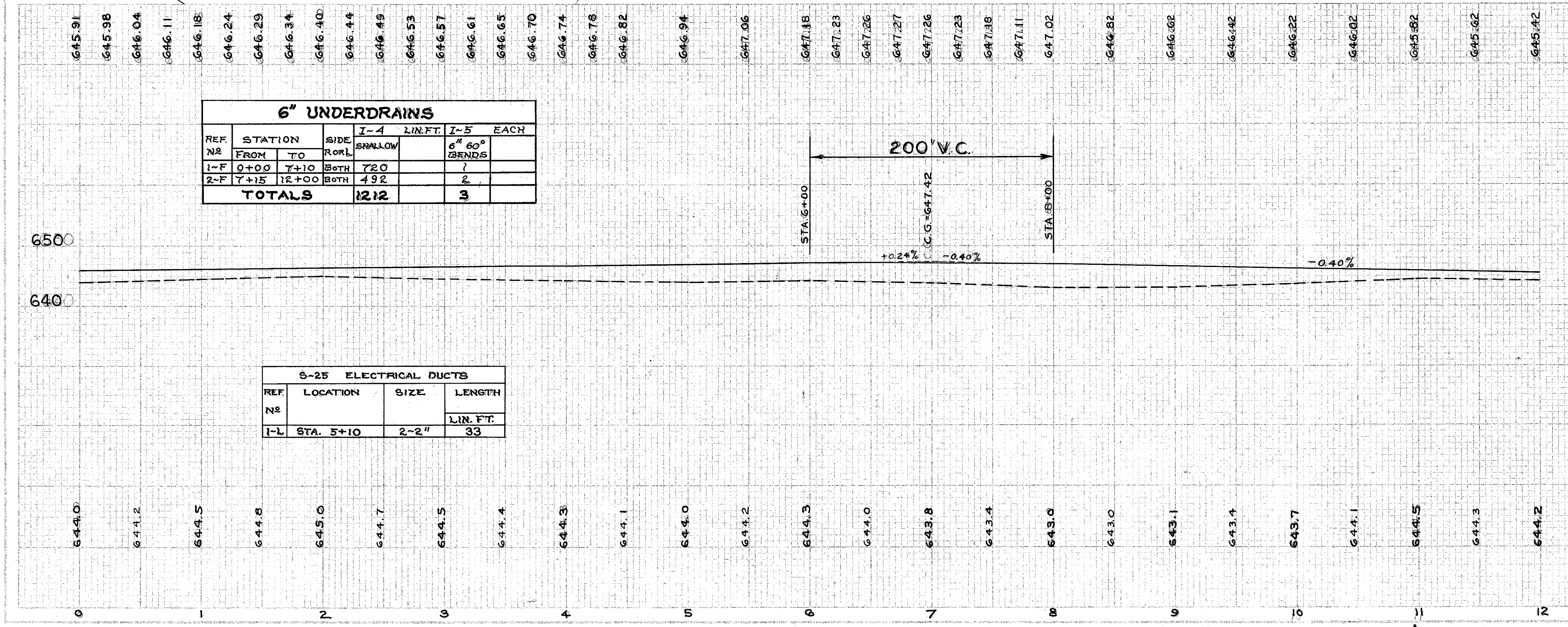


D = 1° 30'
R = 3819.720
Δ = 6° 50'
L = 455.556
T = 228.048
Ch = 455.288
E = 6.801

R = 93.30'
Δ = 38° 19' 720
L = 455.556
T = 228.048
Ch = 455.288
E = 6.801

REF. NO.	STATION		SIDE	I-4 LIN. FT.		I-5 EACH	
	FROM	TO		SHALLOW	6" 60° BENDS		
1-F	0+00	7+10	BOTH	720		7	
2-F	7+15	12+00	BOTH	492		2	
TOTALS				1212		3	

REF. NO.	LOCATION	SIZE	LENGTH
			LIN. FT.
1-L	STA. 5+10	2-2"	33



PLAN & PROFILE... RAMP No 6 STA. 0+00 TO STA. 12+00