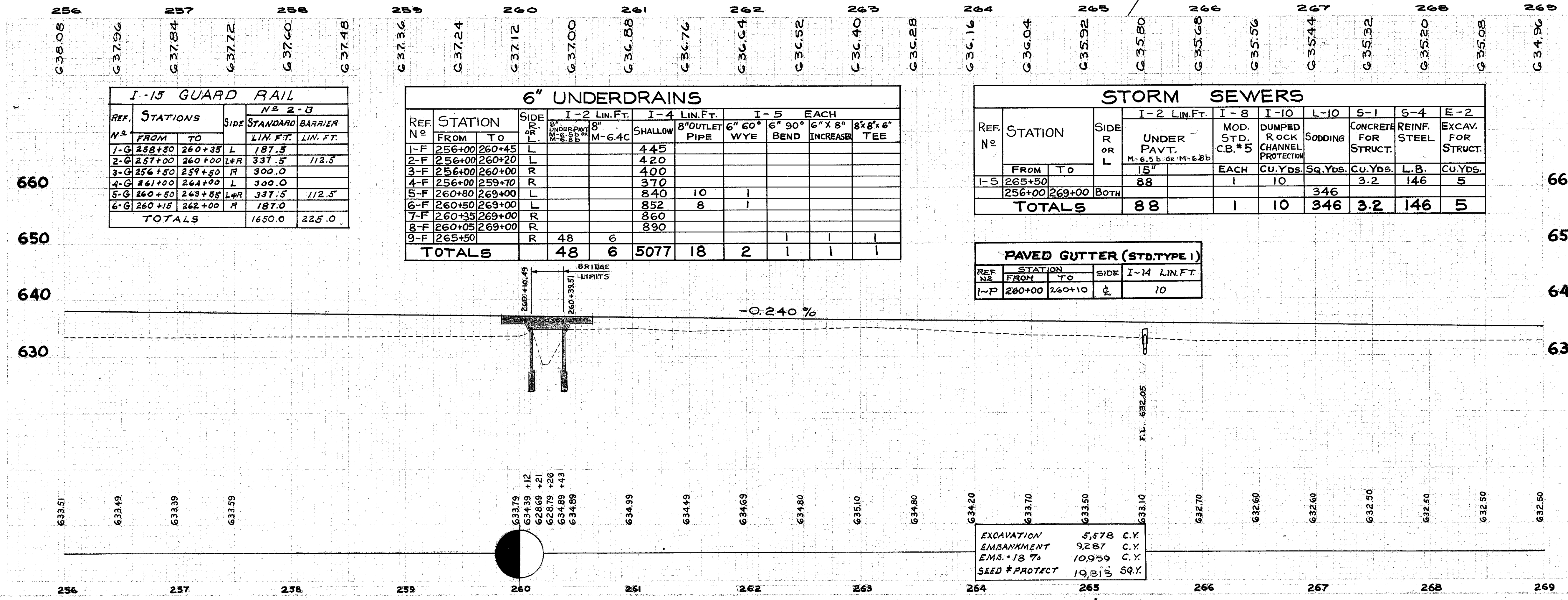


PROPOSED STRUCTURE
 TYPE: Single span reinf concrete slab with reinf concrete substructure.
 SPAN: 26 ft, face to face of abutments.
 ROADWAY: Two 54 ft face to face of parapet.
 LOAD FREQUENCY: CF-2000 (S7) (Adequate for A.A.S.H.O. alternate loading)
 SKEW: 34° L.F.
 WEARING SURFACE: 1" Monolithic concrete.
 APPROACH SLABS: As-1-54 (25' long).
 ALIGNMENT: Tangent.

B.M. - X on Top Headwall Culvert (East End)
39' L of Lakeland. El. = 655.726



I-15 GUARD RAIL					
REF. No	STATIONS		SIDE	N ^o 2-B STANDARD BARRIER	
	FROM	TO		LIN. FT.	LIN. FT.
1-G	258+80	260+35	L	187.5	
2-G	257+00	260+20	L+R	337.5	112.5
3-G	256+50	259+50	R	300.0	
4-G	261+00	264+00	L	300.0	
5-G	260+50	263+55	L+R	337.5	112.5
6-G	260+15	262+00	R	187.0	
TOTALS				1650.0	225.0

6" UNDERDRAINS											
REF. No	STATION	SIDE	I-2 LIN. FT.		I-4 LIN. FT.		I-5 EACH				
			SHALLOW	8" OUTLET PIPE	SHALLOW	8" OUTLET PIPE	6" 60° WYE	6" 90° BEND	6" X 8" INCREASE	8" X 8" X 6" TEE	
1-F	256+00	L			445						
2-F	256+00	L			420						
3-F	256+00	R			400						
4-F	256+00	R			370						
5-F	260+80	L			840	10	1				
6-F	260+50	L			852	8	1				
7-F	260+35	R			860						
8-F	260+05	R			890						
9-F	265+50	R	48	6							
TOTALS					48	6	5077	18	2	1	1

STORM SEWERS										
REF. No	STATION	SIDE	I-2 LIN. FT.		I-8	I-10	L-10	S-1	S-4	E-2
			UNDER PAVT.	MOD. STD. C.B. #5	DUMPED ROCK CHANNEL PROTECTION	SODDING	CONCRETE FOR STRUCT.	REINF. STEEL	EXCAV. FOR STRUCT.	
1-S	265+50		88	1	10		346	3.2	146	5
	256+00	BOTH								
TOTALS			88	1	10		346	3.2	146	5

PAVED GUTTER (STD. TYPE 1)			
REF. No	STATION	SIDE	I-14 LIN. FT.
1-P	260+00	R	10

EXCAVATION	5,578 C.Y.
EMBANKMENT	9,287 C.Y.
EMS. 18%	10,959 C.Y.
SEED & PROTECT	19,313 SQ. Y.

PLAN & PROFILE - LAKELAND FREEWAY - STA. 256+00 TO STA. 269+00