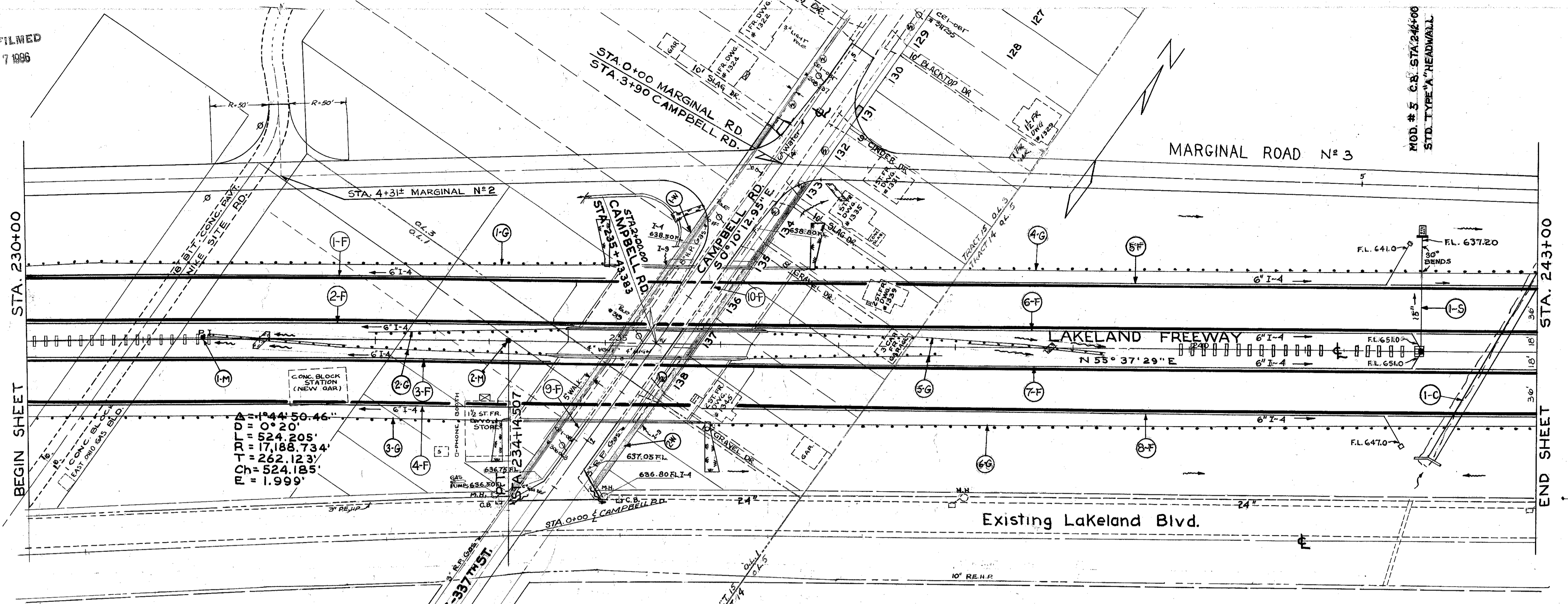
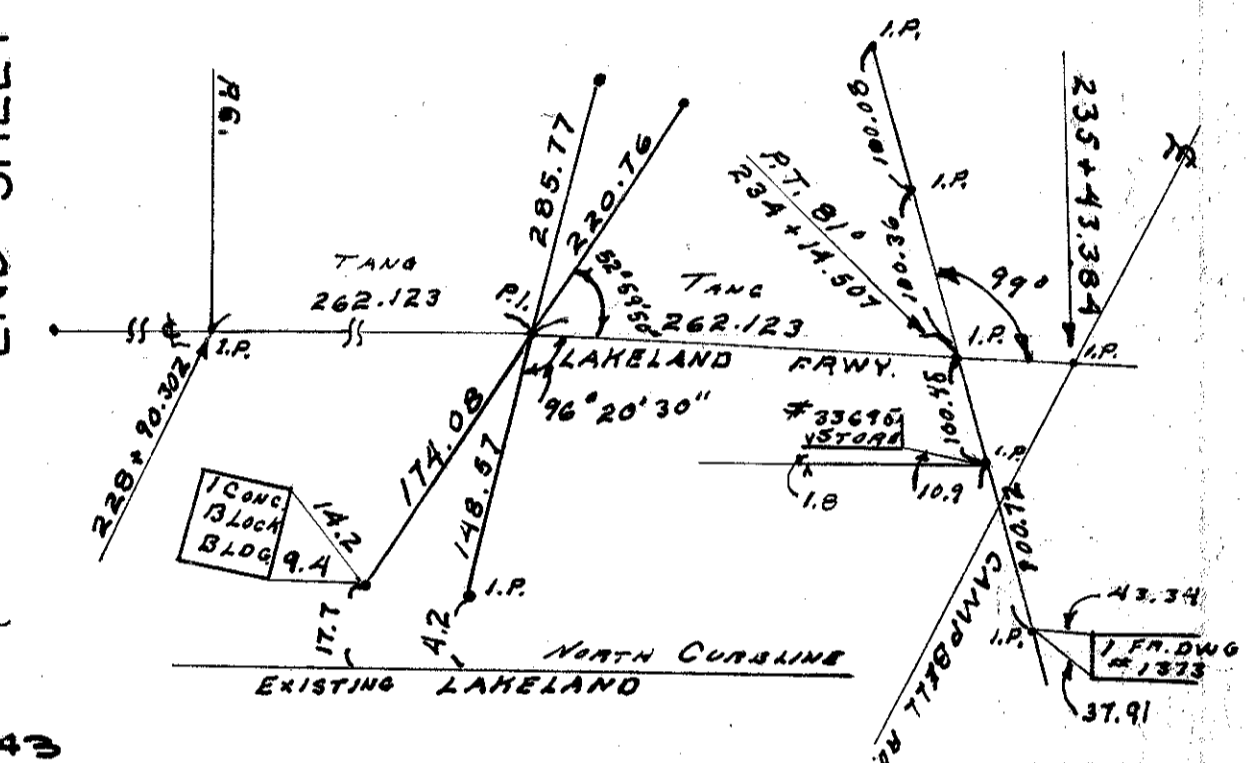


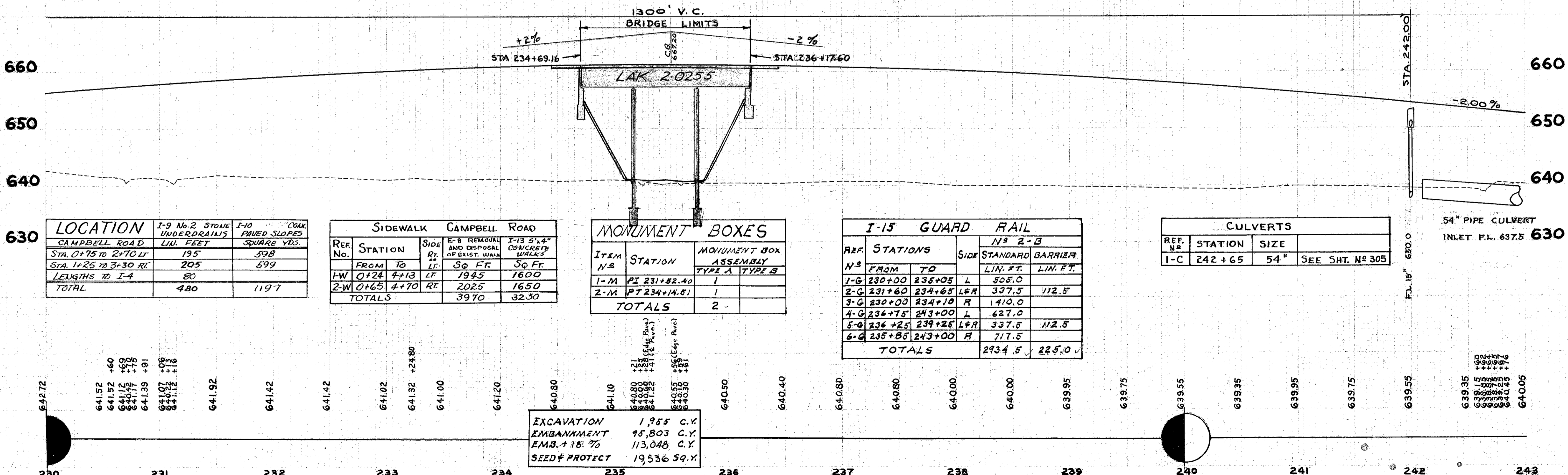
LAKE COUNTY
LAK. - 2-0.00



PROPOSED STRUCTURE
 TYPE: continuous steel beam with reinforced concrete deck and substructure.
 SPANS: 44'-55'-44' 6/8 brgs.
 ROADWAY: two of 54' f/w parapets.
 LOAD FREQUENCY: CF = 2000 (57) (adequate for AASHTO alternate loading)
 SKEW: 34'-12' left forward
 WEARING SURF: 1" monolithic conc.
 APPROACH SLABS: AS-1.54 (25' long)
 ALIGNMENT: tangent.



230	231	232	233	234	235	236	237	238	239	240	241	242	243
G56.05	G56.46	G56.96	G57.23	G57.59	G57.93	G58.24	G58.54	G58.82	G59.08	G59.32	G59.54	G59.82	G60.05
G56.46	G56.96	G57.23	G57.59	G57.93	G58.24	G58.54	G58.82	G59.08	G59.32	G59.54	G59.82	G60.05	G60.20



LOCATION

1-9 No. 2 Stone Underdrains	1-10 CONK FINED SLOPES
STA. 0+75 TO 2+10 LF	598
STA. 1+25 TO 3+30 RL	599
LENGTHS TO I-4	80
TOTAL	480
	1197

SIDEWALK CAMPBELL ROAD

REF. NO.	STATION	SIDE	E-B REMOVAL AND DISPOSAL OF EXIST. WALK	I-13 5'-4" CONCRETE WALKS	
FW	0+24	4+13	LF	1945	1600
Z-W	0+65	4+70	RL	2025	1650
TOTALS			3970	3250	

MONUMENT BOXES

ITEM NO.	STATION	MONUMENT BOX ASSEMBLY
1-M	PI 231+52.40	1
2-M	PT 234+14.81	1
TOTALS		2

I-15 GUARD RAIL

REF.	STATIONS	SIDE	STANDARD	BARRIER
N#	FROM TO		LIN. FT.	LIN. FT.
1-G	230+00 235+05	L	505.0	
2-C	231+60 234+65	L&R	337.5	112.5
3-G	230+00 234+10	R	410.0	
4-G	236+75 243+00	L	627.0	
5-0	236+25 239+25	L&R	337.5	112.5
6-G	235+85 243+00	R	717.5	
TOTALS			2934.5	225.0

CULVERTS

REF. NO.	STATION	SIZE	SEE SH. NO.
1-C	242+65	54"	305

STORM SEWERS

REF. NO.	STATION	FROM	TO	SIZE	MOD.	30° BENDS	EXCAV. FOR CONCRETE STRUCTURE	EXCAV. FOR ROCK STRUCTURE	DUMPED
I-2	230+00	230+00	235+00	60"	MOD.	30°	SPECIAL STRUCTURE	STANDARD STRUCTURE	6"
I-3	230+00	230+00	234+50	60"	MOD.	30°	SPECIAL STRUCTURE	STANDARD STRUCTURE	6"
I-4	230+00	234+50	234+50	60"	MOD.	30°	SPECIAL STRUCTURE	STANDARD STRUCTURE	6"
I-5	230+00	234+50	234+50	60"	MOD.	30°	SPECIAL STRUCTURE	STANDARD STRUCTURE	6"
I-6	230+00	234+50	234+50	60"	MOD.	30°	SPECIAL STRUCTURE	STANDARD STRUCTURE	6"
I-7	230+00	234+50	234+50	60"	MOD.	30°	SPECIAL STRUCTURE	STANDARD STRUCTURE	6"
I-8	230+00	234+50	234+50	60"	MOD.	30°	SPECIAL STRUCTURE	STANDARD STRUCTURE	6"
I-9	230+00	234+50	234+50	60"	MOD.	30°	SPECIAL STRUCTURE	STANDARD STRUCTURE	6"
I-10	230+00	234+50	234+50	60"	MOD.	30°	SPECIAL STRUCTURE	STANDARD STRUCTURE	6"
TOTALS									

6" UNDERDRAINS

REF. NO.	STATION	FROM	TO	SIZE	MOD.	30° BENDS	EXCAV. FOR CONCRETE STRUCTURE	EXCAV. FOR ROCK STRUCTURE	DUMPED
1-F	230+00	235+00	L	500					
2-F	230+00	234+75	R	476					
3-F	230+00	234+50	R	450					
4-F	230+00	234+25	R	424					
5-F	230+00	234+00	L	666					
6-F	236+30	243+00	L	674					
7-F	236+10	243+00	R	696					
8-F	235+85	243+00	R	736					
9-F	0+20	2+90	L	282					
10-F	0+65	3+35	R	280					
TOTALS				5184					36

PLAN & PROFILE - LAKELAND FREEWAY STA. 230+00 TO STA. 243+00