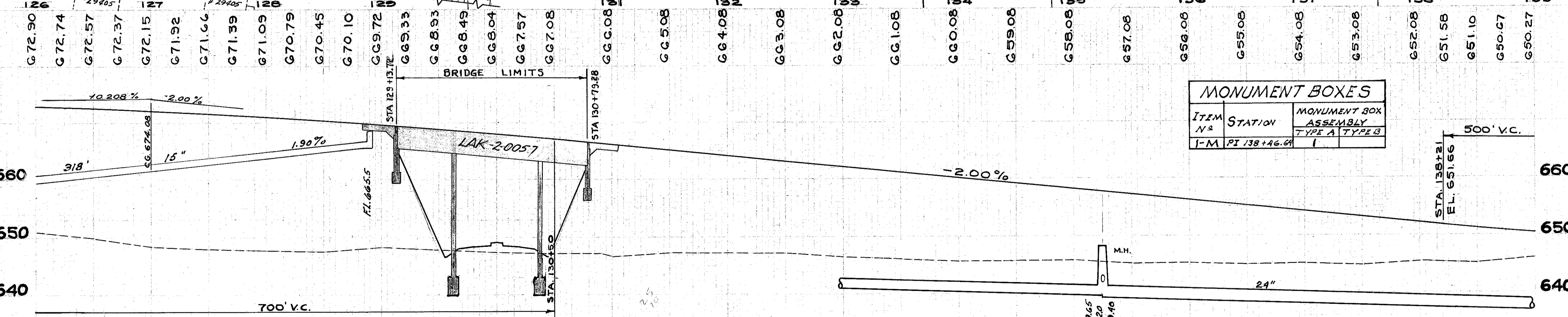
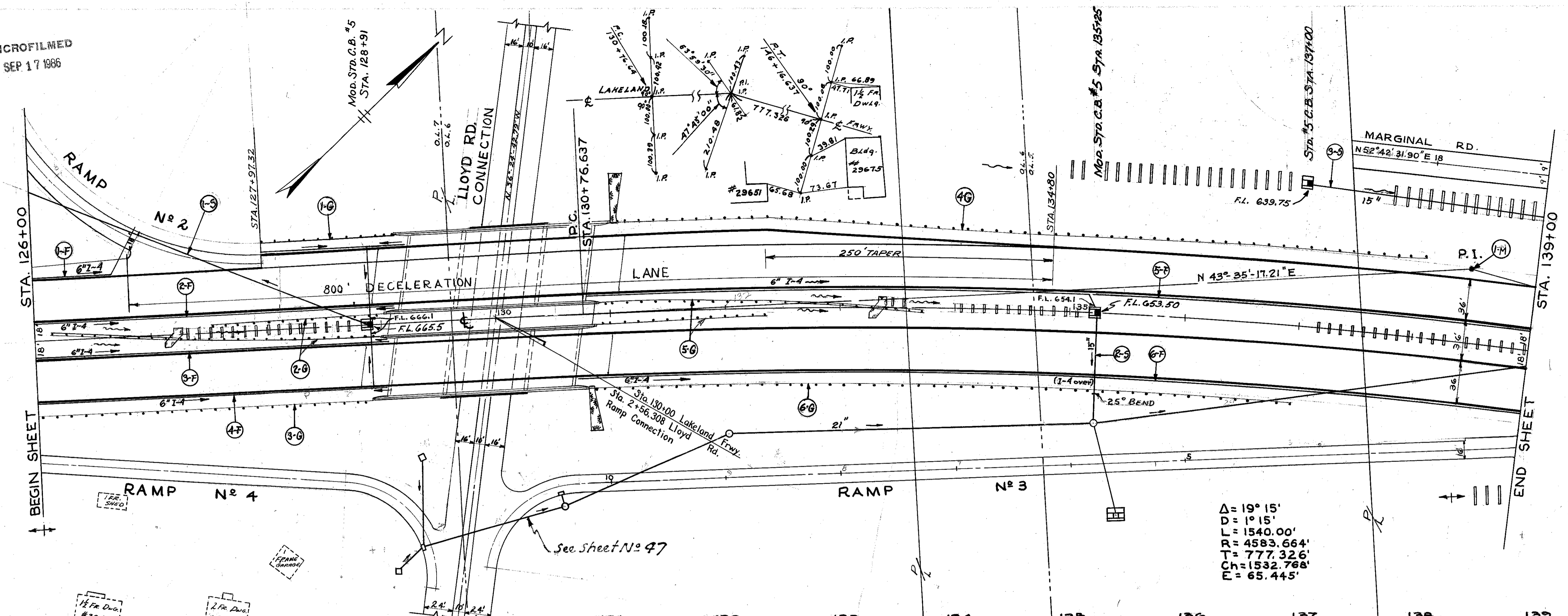


MICROFILMED
SEP 17 1986

LAKE COUNTY
LAK-2-0.00

PROPOSED STRUCTURE
 TYPE: continuous steel beams with reinforced concrete deck and substructure
 SPANS: 49'-70'-42" o/c brgs.
 ROADWAY: one 54' and one 66' f/f of concrete parapets.
 LOAD FREQUENCY: C.F. 2000 (ST) (adequate for AASHTO alternate loading)
 SKEW: 10'-00' left forward
 WEAR SURFACE: 1" monolithic conc.
 APPROACH SLABS: AS-1-54 (25' long)
 ALIGNMENT: tangent



MONUMENT BOXES

| ITEM | STATION | MONUMENT BOX ASSEMBLY |
|------|--------------|-----------------------|
| I-M | PI 138+46.61 | TYPE A TYPE B |

6" UNDERDRAINS

| REF. STATION | SIDE | I-4 LIN. FT. | | I-5 EACH | | I-2 L.F. | | |
|---------------|------|--------------|----------------|-------------|---------------|-------------|-----------------------|-----------|
| | | SHALLOW | 8" OUTLET PIPE | 6" x 6" TEE | 8" x 8" CROSS | 6" 60' BEND | 8" UNDER PART M. 6.55 | |
| 1-F 126+00 | L | 234 | | 1 | | 1 | | |
| 2-F 126+00 | L | 314 | | | | 60 | 06 | |
| 3-F 126+00 | R | 310 | | | | 48 | 06 | |
| 4-F 126+00 | R | 302 | | 1 | | | | |
| 5-F 130+80 | L | 826 | 8 | | | 1 | | |
| 6-F 130+70 | R | 820 | | | | | | |
| TOTALS | | 2806 | 8 | 2 | 2 | 2 | 108 | 12 |

I-15 GUARD RAIL

| REF. STATIONS | SIDE | N° 2-5 STANDARD BARRIER | |
|---------------|------|-------------------------|--------------|
| | | LIN. FT. | LIN. FT. |
| 1-0 127+97 | L | 116.0 | |
| 2-0 126+15 | L/R | 325.0 | 112.5 |
| 3-0 126+00 | R | 292.0 | |
| 4-0 131+00 | L | 712.5 | |
| 5-0 130+90 | L/R | 325.0 | 112.5 |
| 6-0 130+80 | R | 612.5 | |
| TOTALS | | 2383.0 | 223.0 |

STORM SEWERS

| REF. STATION | SIDE | FROM TO | I-2 LIN. FT. I-5 EACH | | I-5 | L-10 SQ. YD. | SOD. FOR SODDING | |
|---------------|------|------------|-----------------------|-------------|----------|--------------|------------------|------------|
| | | | STD. MOD. C.B. #5 | 25' BEND #5 | | | | |
| 1-S 126+00 | L | 126+00 | 15' | 15' | 1 | | | |
| 2-S 137+00 | R | 137+00 | 318 | 70 | 22 | | | |
| 3-S 126+00 | R | 139+00 | 204 | | | | | |
| TOTALS | | 204 | 388 | 22 | 2 | 1 | 68 | 174 |

EXCAVATION 3,236 C.Y.
 EMBANKMENT 62,890 C.Y.
 EMB + 18% 74,210 C.Y.
 SEED + PROTECT 22,790 SQ.Y.

PLAN & PROFILE LAKELAND FREEWAY - STA. 126+00 TO STA. 139+00