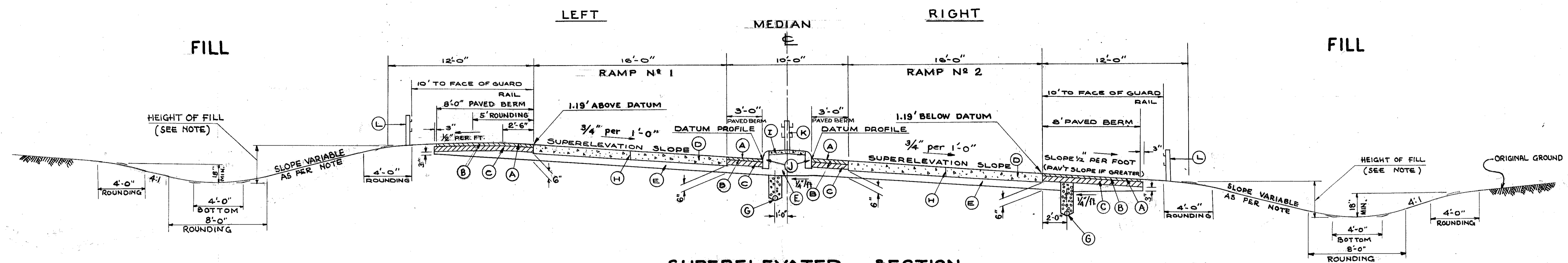


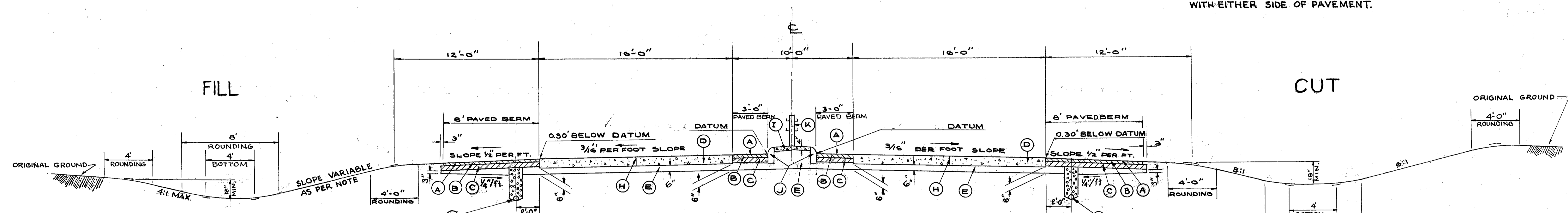
# TYPICAL SECTION TWO WAY RAMP CONNECTION (RAMPS N° 1 & N° 2)

LAKE COUNTY  
LAK. - 2-0.00

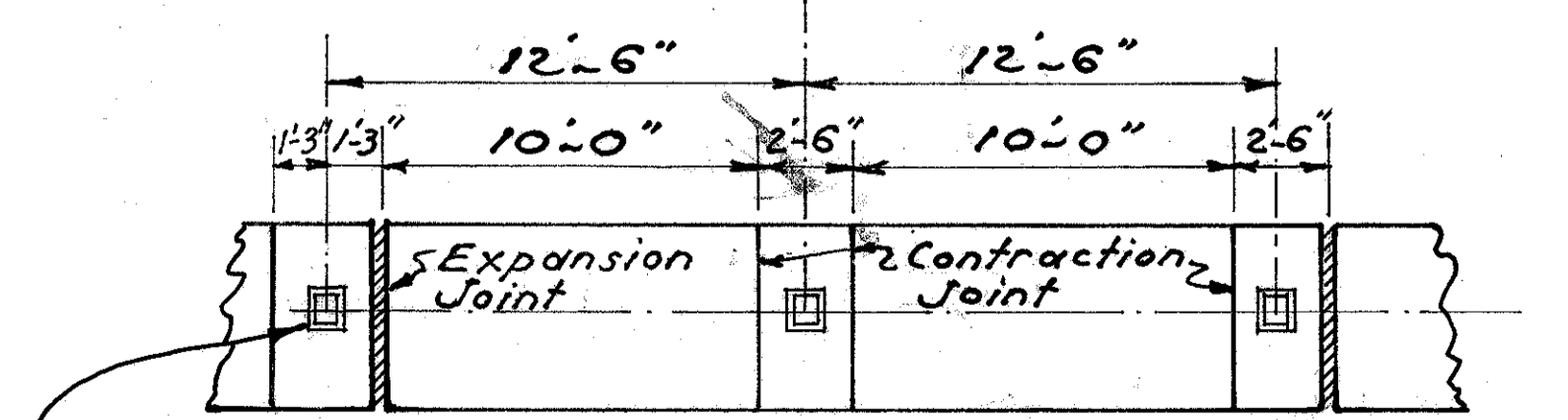
LLOYD ROAD CONNECTION  
SCALE 1/4" = 1'-0"  
TYPE T-71



**NOTE:**  
FOR HEIGHT OF FILL UNDER 10' USE 4:1 MAX. SIDE SLOPES.  
FOR HEIGHT OF FILL OVER 10' USE 2:1 SIDE SLOPES.  
CROSS-SECTIONS SHALL GOVERN OVER TYPICAL SECTIONS WHERE VARIABLE CONDITIONS ARE ENCOUNTERED IN SLOPES.  
CUT AND FILL SECTIONS SHOWN ARE INTERCHANGEABLE WITH EITHER SIDE OF PAVEMENT.



- (A) T-31 BITUMINOUS SURFACE TREATMENT, TWO APPLICATIONS (SEE NOTE IN PROPOSAL)
- (B) B-33 3" BITUMINOUS MACADAM BASE COURSE
- (C) I-18 5" STABILIZED CRUSHED AGGREGATE
- (D) T-71 10" REINFORCED PORTLAND CEMENT CONCRETE
- (E) I-22 SUBBASE, DEPTH VARIABLE (GRADING "A" OR "B") AS PER PLAN
- (G) I-4 6" UNDERDRAIN, SHALLOW (2'-9" MIN. FLOW LINE TO TOP OF ADJACENT PAV'T.) STANDARD LONGITUDINAL JOINT
- (H) I-21 4" PORTLAND CEMENT CONCRETE MEDIAN TYPE 1
- (I) I-12 CONCRETE CURB TYPE 6 (6" X 18")
- (K) I-15 GUARD RAIL, BARRIER DESIGN, AS PER STD. DWG. I-15 N° 2-A
- (L) I-15 GUARD RAIL, STANDARD DESIGN, AS PER STD. DWG. I-15 N° 2-A



1/2" Expansion Joint Material  
ground Posts shall be included for Payment with Item I-21

Note: Backfill around Guard Rail Posts in Median shall be Granular Material

