

11-1
 ILWED
 SEP 17 1963

STATE OF OHIO
 DEPARTMENT OF HIGHWAYS

LIMITED ACCESS

THIS IMPROVEMENT IS ESPECIALLY DESIGNED FOR THROUGH TRAFFIC AND HAS BEEN DECLARED A LIMITED ACCESS HIGHWAY OR FREEWAY BY ACTION OF THE DIRECTOR OF HIGHWAYS IN ACCORDANCE WITH THE PROVISIONS OF SECTION 551.02 OF THE REVISED CODE OF OHIO.

FED. RD. DIVISION	STATE	PROJECT	FISCAL YEAR
2	OHIO	U-329 (14)	1963

LAKE COUNTY
 LAK-2-0.00

1
 394

U-329 (14)

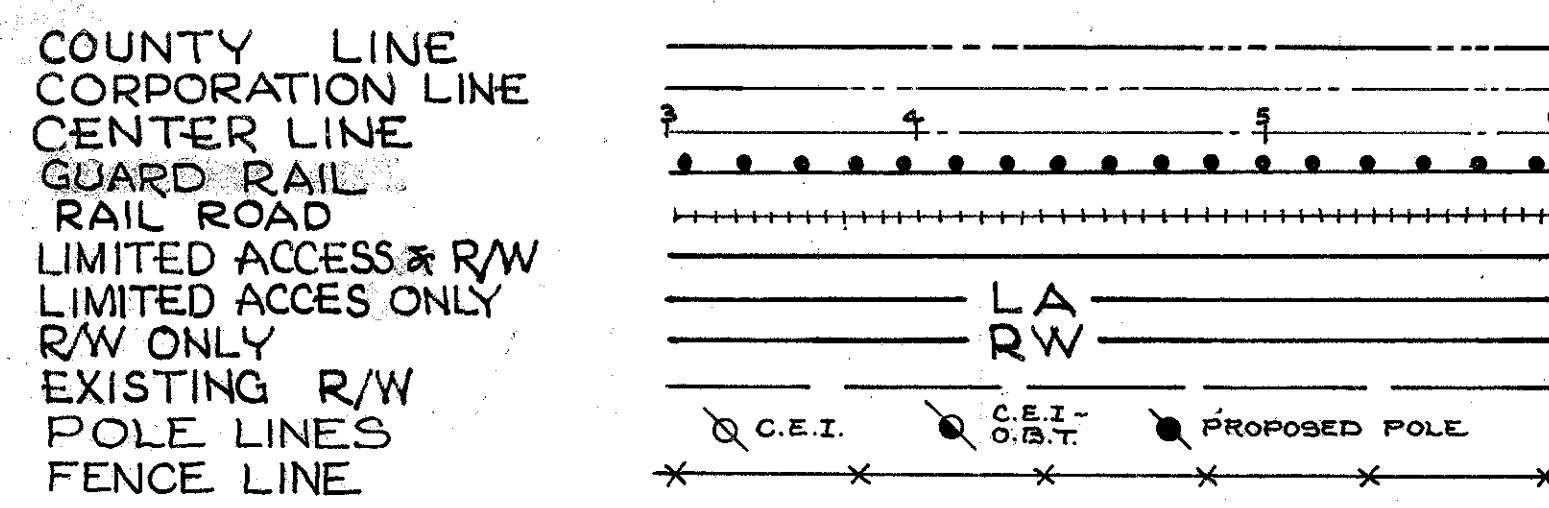
LAK-2-0.00

CUYAHOGA COUNTY- CITY OF EUCLID
 LAKE COUNTY

CITIES OF WICKLIFFE - WILLOWICK - EASTLAKE & WILLOUGHBY

SEP 24 1963
 GROUND PHOTOLAB

CONVENTIONAL SIGNS



The Standard Specifications of the State of Ohio Department of Highways including changes and Supplemental Specifications listed in the proposal shall govern this improvement.

I hereby approve these plans and declare that the making of this improvement will not require the closing to traffic of the highway and that provisions for the maintenance and safety of traffic will be as set forth on the plans and estimates.

The right of way for this improvement will be provided by the State of Ohio.

Approved Wm B. Henry
 Date 9-1-59 Division Deputy Director

Approved Gay E. Neuser
 Date 11-13-59 Deputy Director, of Planning & Programming

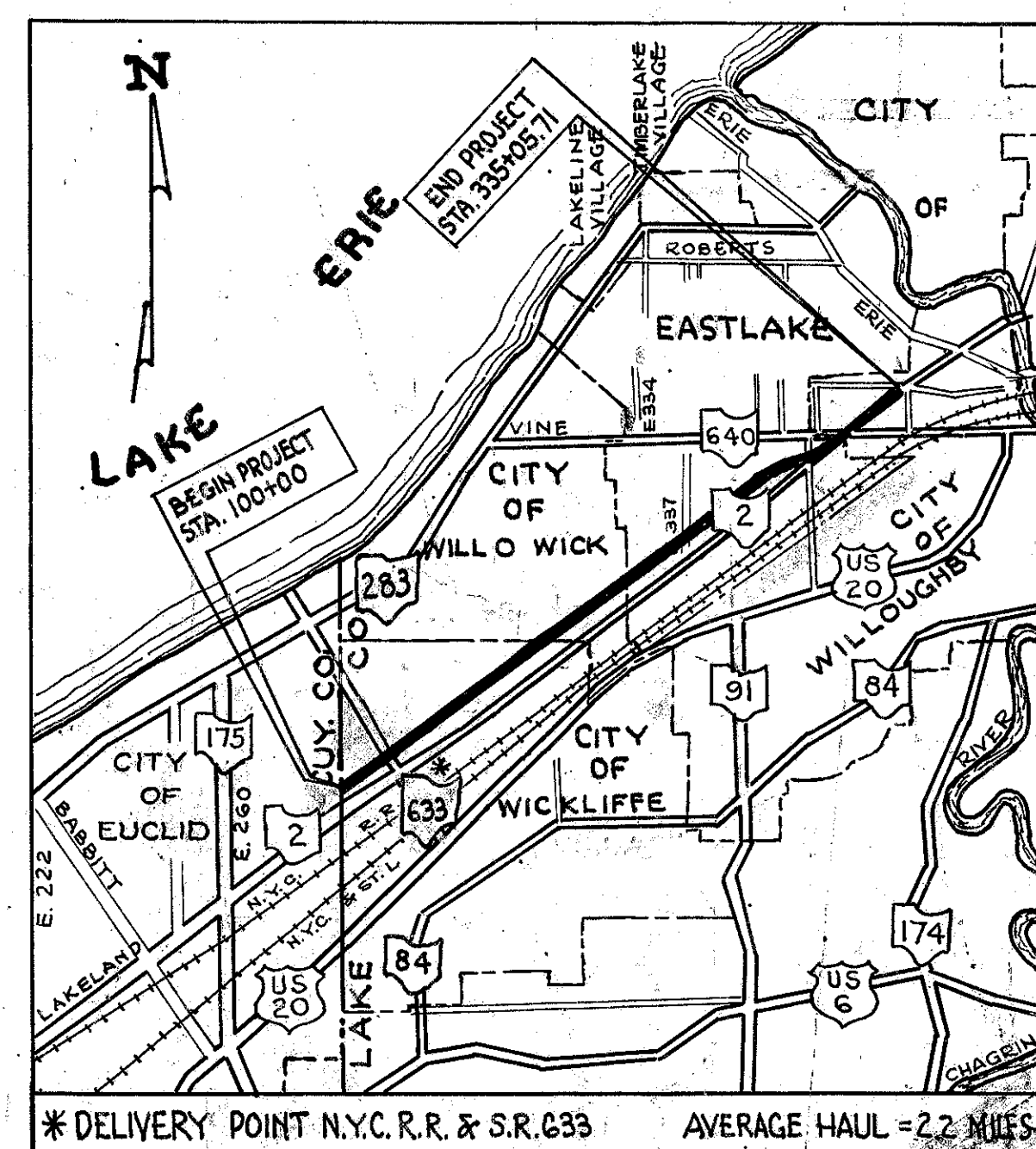
Approved W. Overman
 Date 11-6-59 Engineer of Bridges

Approved W. L. Cannon
 Date 11-2-59 Engineer of Location & Design

Approved C. W. McCaughey
 Date 11-9-59 Deputy Director, of Design & Construction

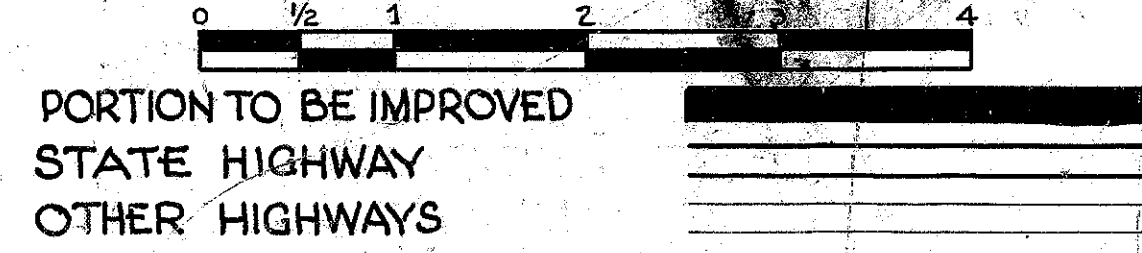
Approved W. Berry
 Date 11-13-59 First Assistant Director

Approved E. L. Preston
 Date 11-13-59 Director of Highways.



LOCATION PLAN

SCALE IN MILES



INDEX OF SHEETS

TITLE SHEET	1
LOCATION PLAN	2
TYPICAL SECTIONS	3-10
GENERAL NOTES	11-12
SUMMARY OF QUANTITIES	13
PAVEMENT CALCULATIONS	14-20
GENERAL SUMMARY	21-26 & 25A
PLAN & PROFILE SHEETS	27-86
EXTRA AREA DETAILS	87-110
SUPER ELEVATIONS TABLES	111-113
RIGHT OF WAY SHEETS	114-134
CROSS SECTIONS	135-290
GRADING PLANS	291-293
RETENTION RESERVOIR	294-297
CULVERT DETAILS	298-309
DRAINAGE & OTHER DETAILS	310-315
BRIDGE PLANS	316-394, 393A

LINE DATA

LENGTH OF PROJECT	
Begin Project	Sta. 100+00
End Project	Sta. 335+05.71
NET LENGTH OF PROJECT	= 23505.71 LIN.FT. OR 4.451 MI.
LENGTH OF WORK:	
Begin Work	Sta. 99+00
End Work	Sta. 335+05.71
Gross Length of Work	= 23605.71 Lin.Ft.
Add for Approaches:	
Rush Rd	= 775 " "
Vine St	= 2180 " "
Campbell Rd.	= 475 " "
NET LENGTH OF WORK	= 27035.71 LIN. FT. OR 5.120 MI.

SCALES

PLAN	1" = 50'
PROFILE HOR.	1" = 50'
PROFILE VER.	1" = 10'
CROSS SECTIONS	1" = 10'

STANDARD DRAWINGS			
AS-1-54	12-1-54	I-8C.B. N°3A	1-26-59
B-T-50727F	10-1-47	I-8C.B. N°5	7-1-58
B-T-71R	3-2-53	I-8C.B. N°6	1-26-59
DR-1	1-3-55	I-8 I.N. N°2A	4-23-59
F-1	9-1-59	I-8 M.H.N°1	1-26-59
F-3	9-1-59	I-8 M.H.N°2	1-26-59
G-707	6-1-56	I-12	7-1-54
HW-A#B	7-15-57	I-14 G	1-22-52
I-8 C.B. 1-2A	8-1-26-59		
I-8 C.B. 2-2A#B	3-2-59	I-21-23	8-1-56

STANDARD DRAWINGS			
L-1	4-1-50	CS-2-54 (25)	2-2-59
L-3	4-1-50	RD-1-55	2-2-59
L-3-A	4-1-50	I-8 M.H. N°4	1-26-59
L.J. N°1	7-1-55	I-15 N°1	5-21-59
S-27 P.C.3	2-20-45	I-15 N°2A	5-21-59
T-35	1-2-56	R.I. 1	7-15-58
T-J	5-1-56	L-8C-45 (25)	9-18-47
SP-53	11-25-58		
I-1,2,3,4,5	2-20-45		

SUPPLEMENTAL SPECIFICATIONS	
M-206.6 (W)	5-25-56
18	R. 6-15-59

116R 904
 DEPARTMENT OF COMMERCE
 BUREAU OF PUBLIC ROADS
 APPROVED _____
 DIVISION ENGINEER
 DATE _____

SEP 24 1963
 GROUND PHOTOLAB