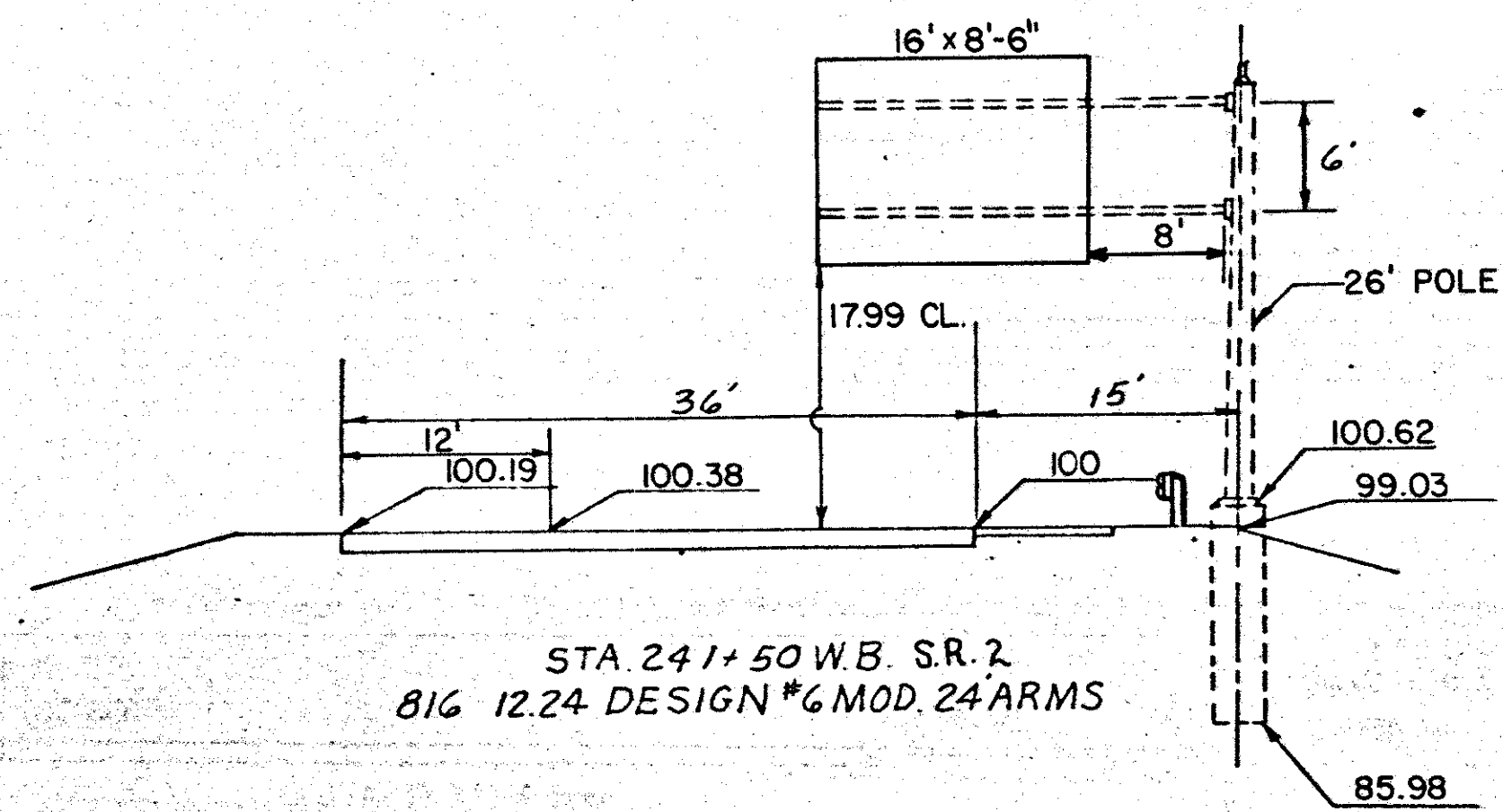


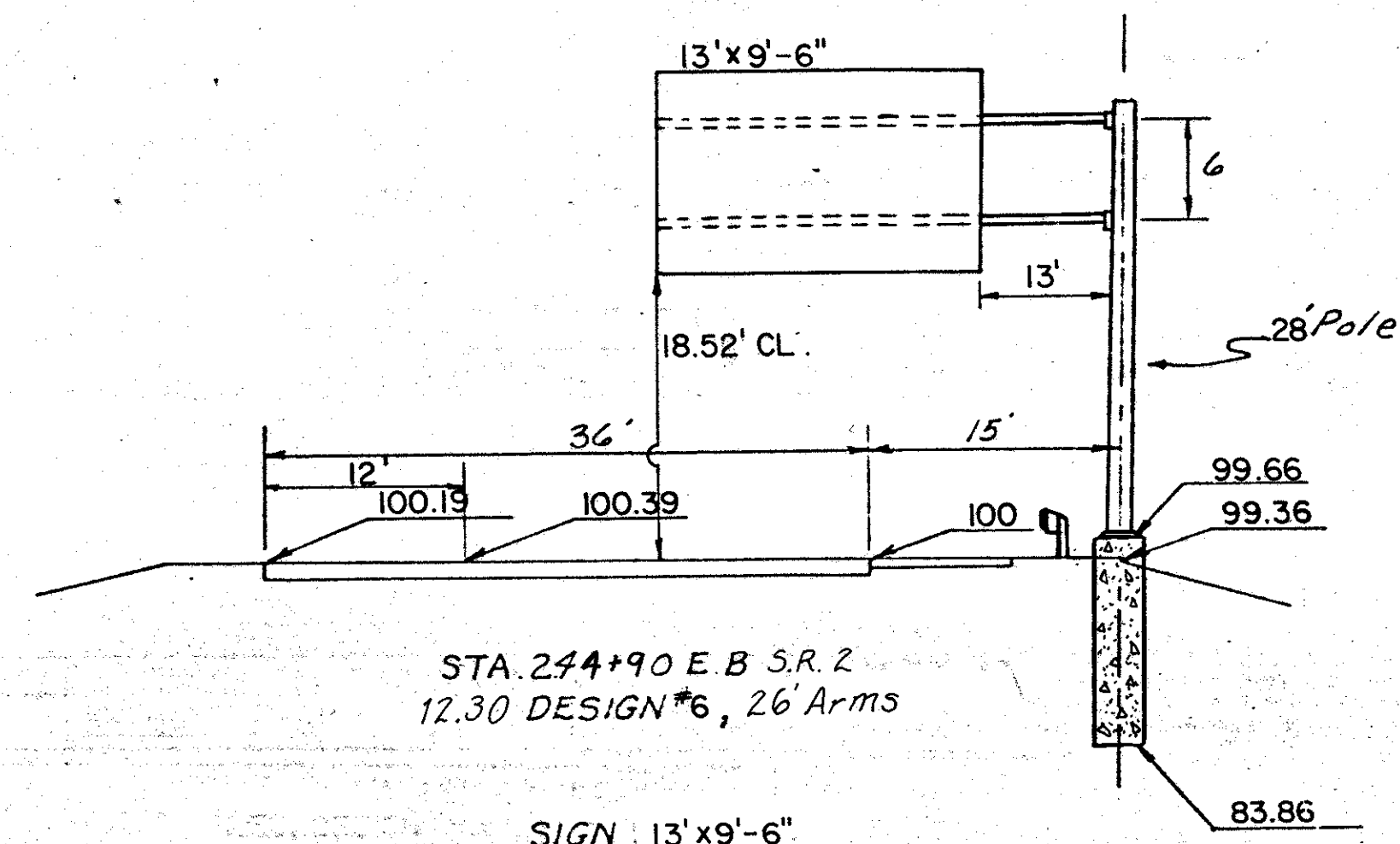
113



STA 241+50 W.B. S.R. 2
816 12.24 DESIGN #6 MOD. 24 ARMS

SIGN 16'x8'-6"
BRKT. SPACING - 8 5/8", 75 3/8", 99 3/8", 8 5/8"
No. OF BRKTS - 3 Z BRKTS, HT. - 8'-6"

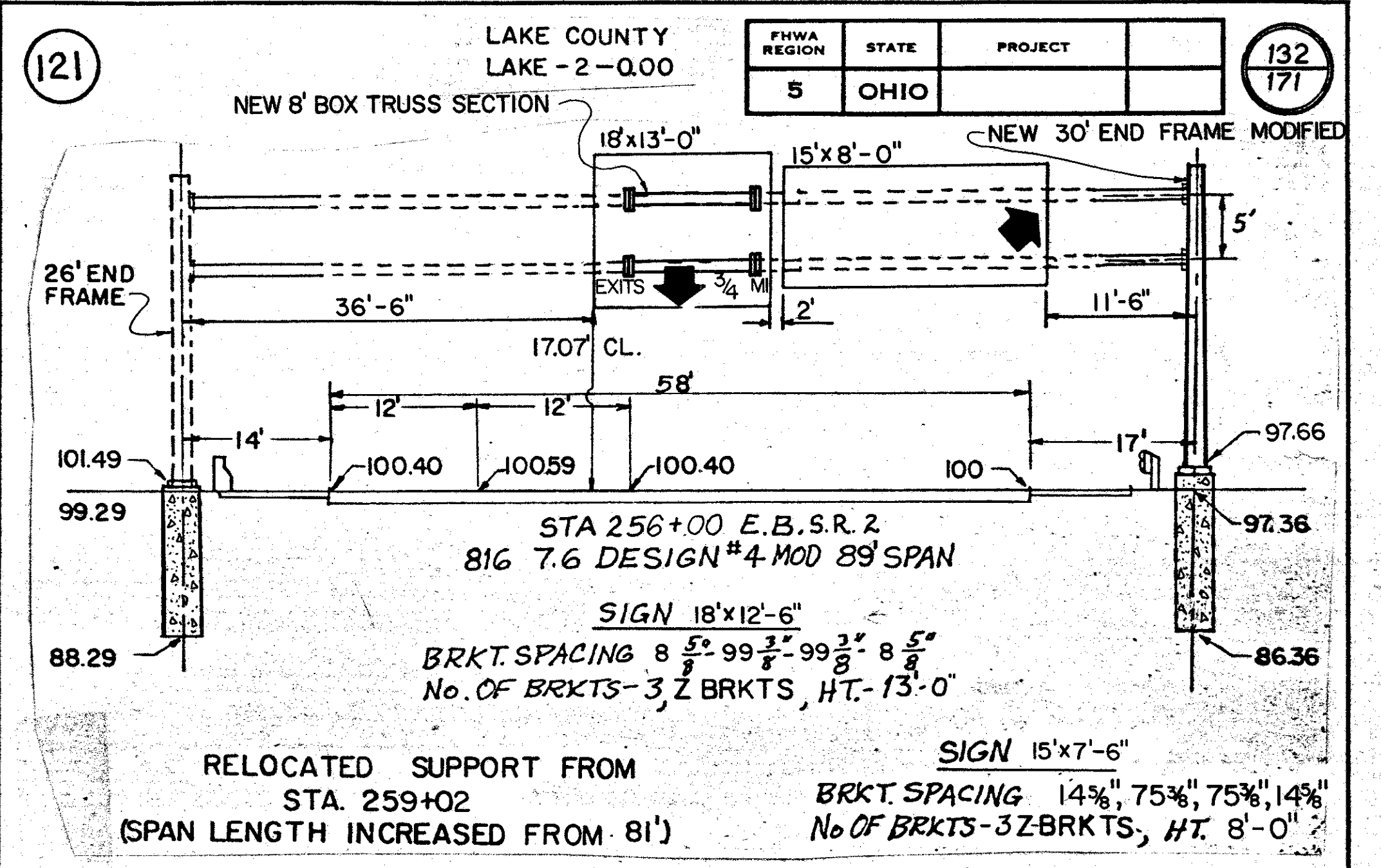
118



STA 244+90 E.B. S.R. 2
12.30 DESIGN #6, 26 ARMS

SIGN 13'x9'-6"
BRKT. SPACING - 6", 72", 72", 6"
No. OF BRKTS - 3 Z BRKTS, HT. - 9'-6"

121

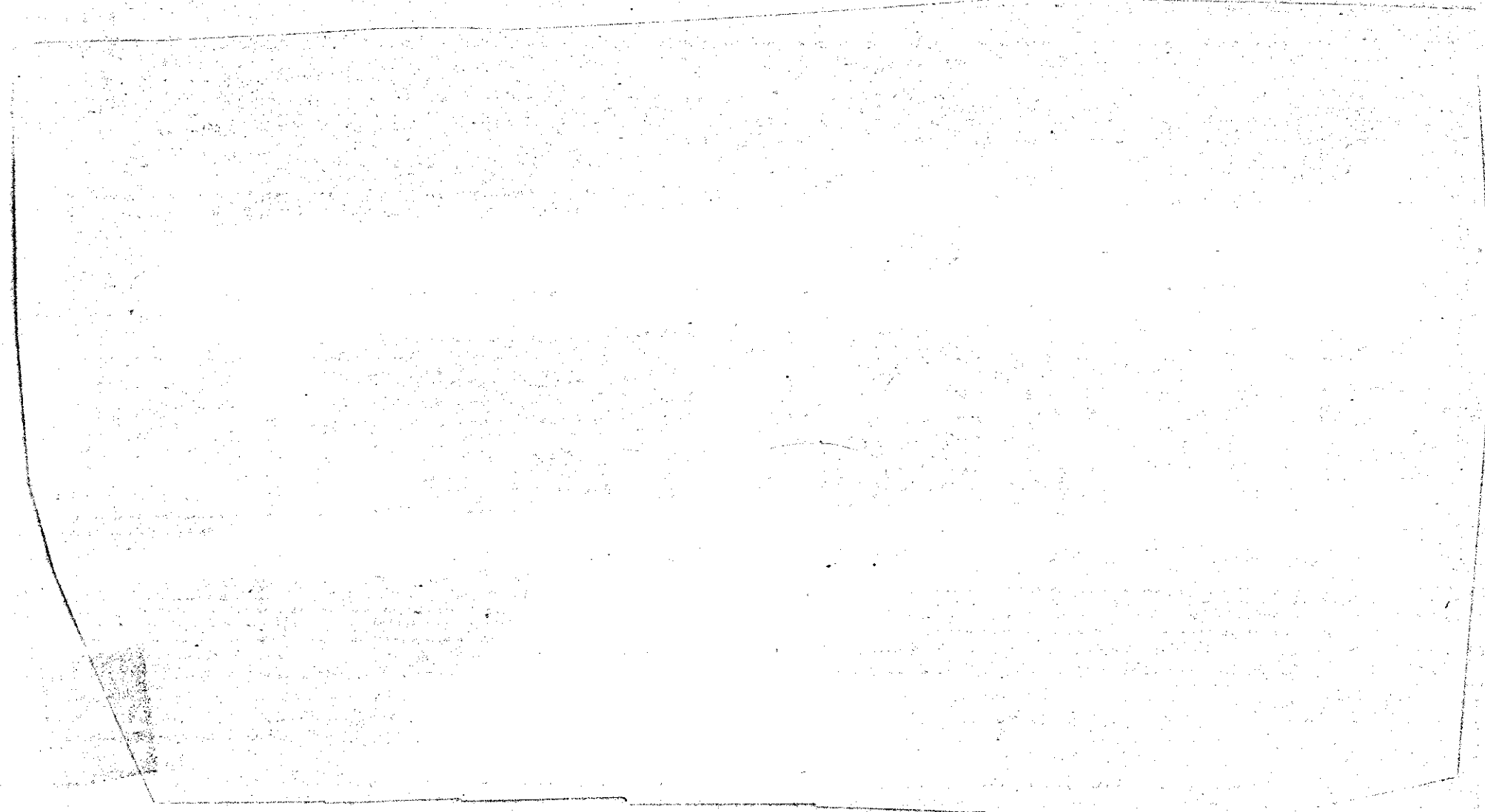


STA 256+00 E.B. S.R. 2
816 7.6 DESIGN #4 MOD 89' SPAN

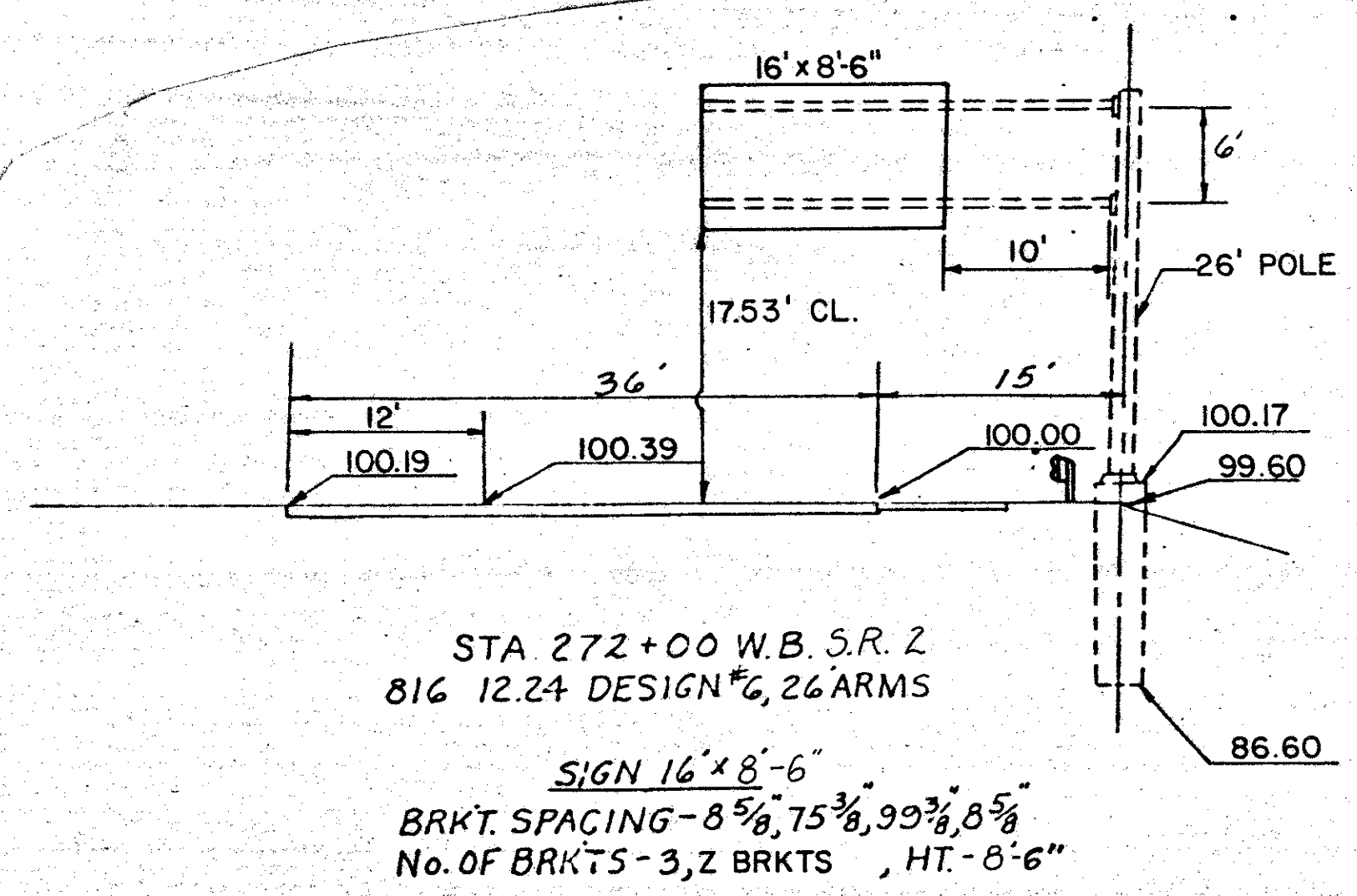
SIGN 15'x7'-6"
BRKT. SPACING 14 3/8", 75 3/8", 75 3/8", 14 3/8"
No. OF BRKTS - 3 Z BRKTS, HT. - 8'-0"

RELOCATED SUPPORT FROM
STA. 259+02
(SPAN LENGTH INCREASED FROM 81')

126



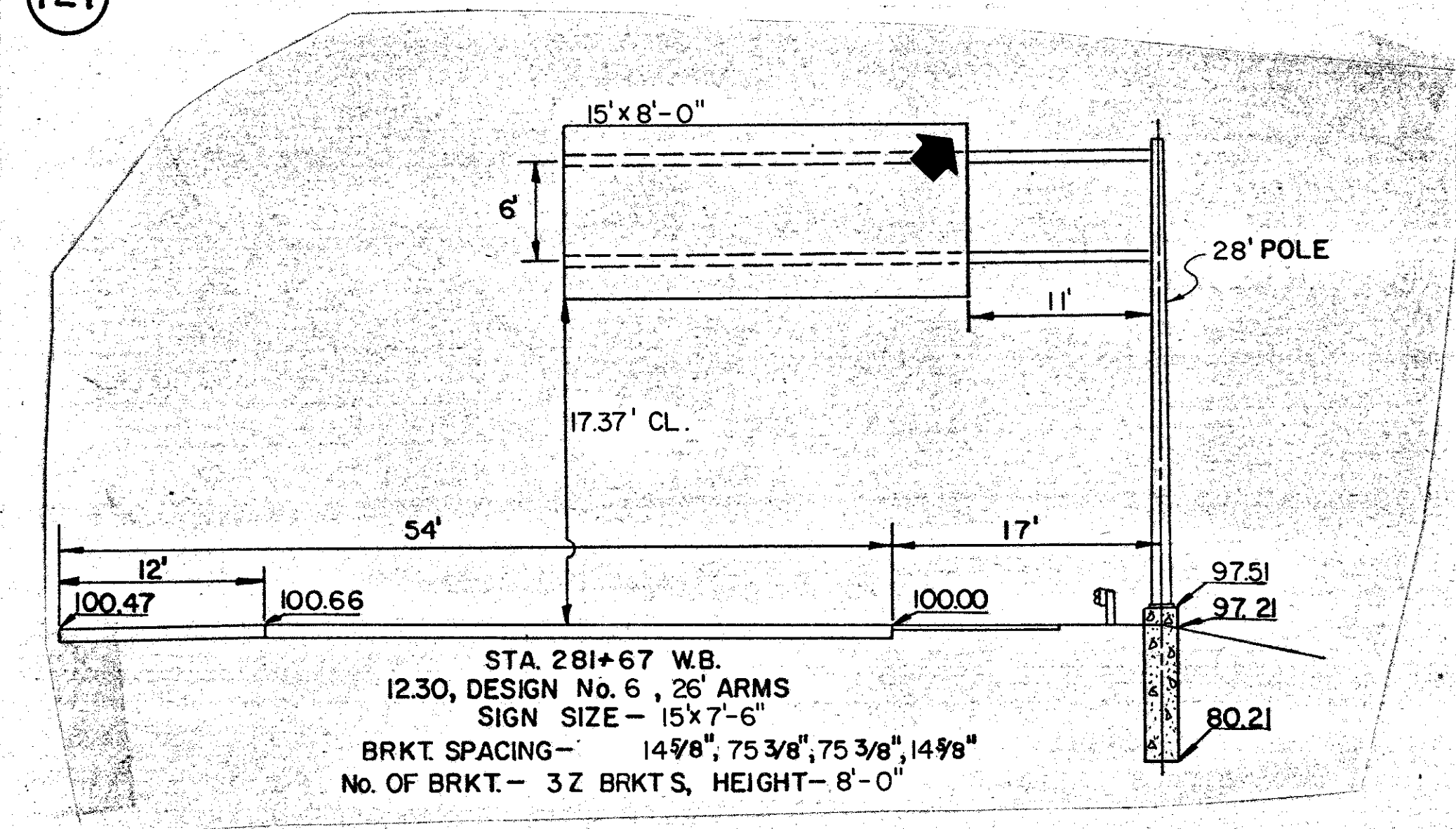
127



STA 272+00 W.B. S.R. 2
816 12.24 DESIGN #6, 26 ARMS

SIGN 16'x8'-6"
BRKT. SPACING - 8 5/8", 75 3/8", 99 3/8", 8 5/8"
No. OF BRKTS - 3 Z BRKTS, HT. - 8'-6"

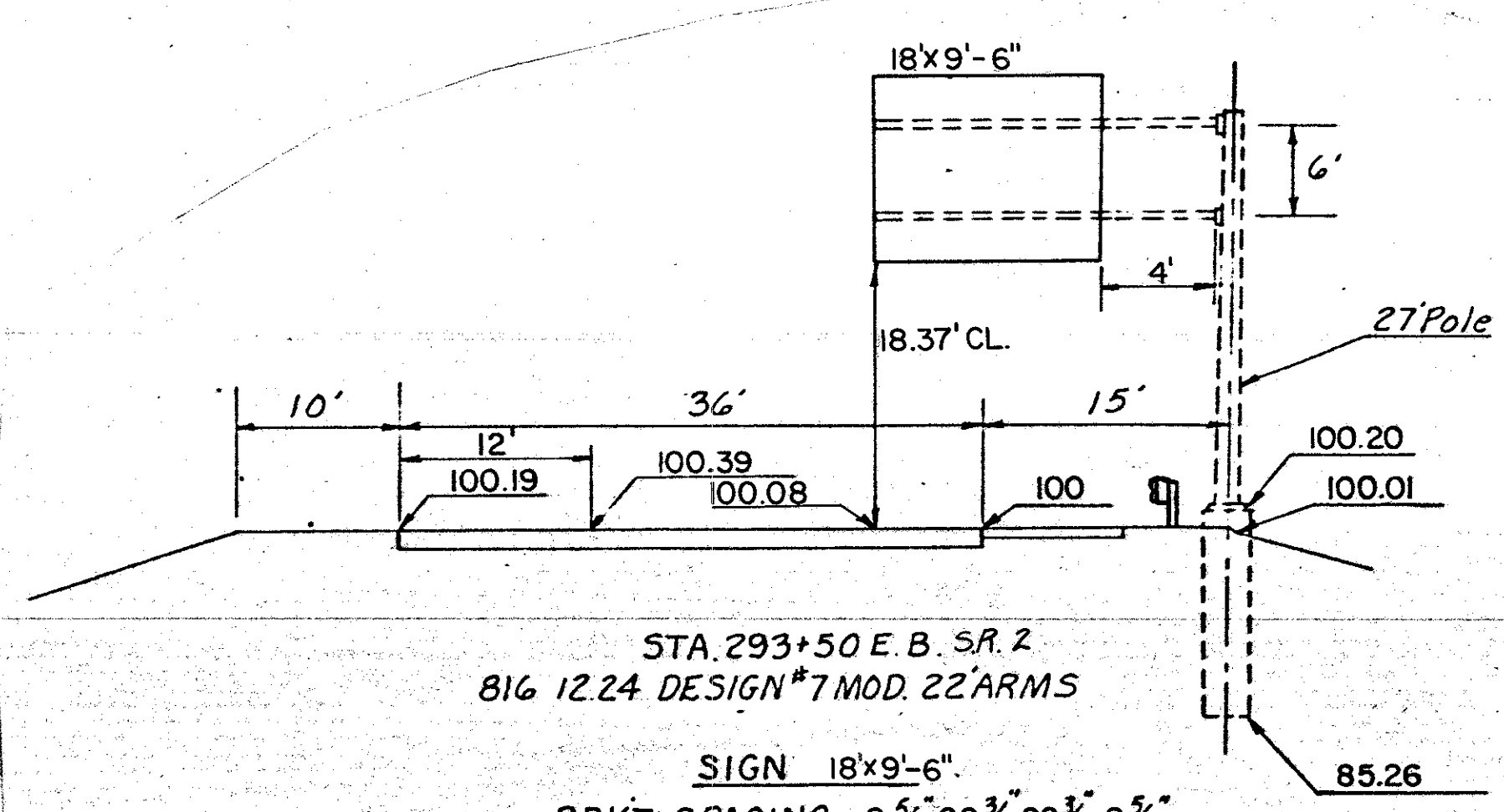
129



STA 281+67 W.B.
12.30, DESIGN No. 6, 26 ARMS

SIGN SIZE - 15'x8'-0"
BRKT. SPACING - 14 7/8", 75 3/8", 75 3/8", 14 7/8"
No. OF BRKT. - 3 Z BRKTS, HEIGHT - 8'-0"

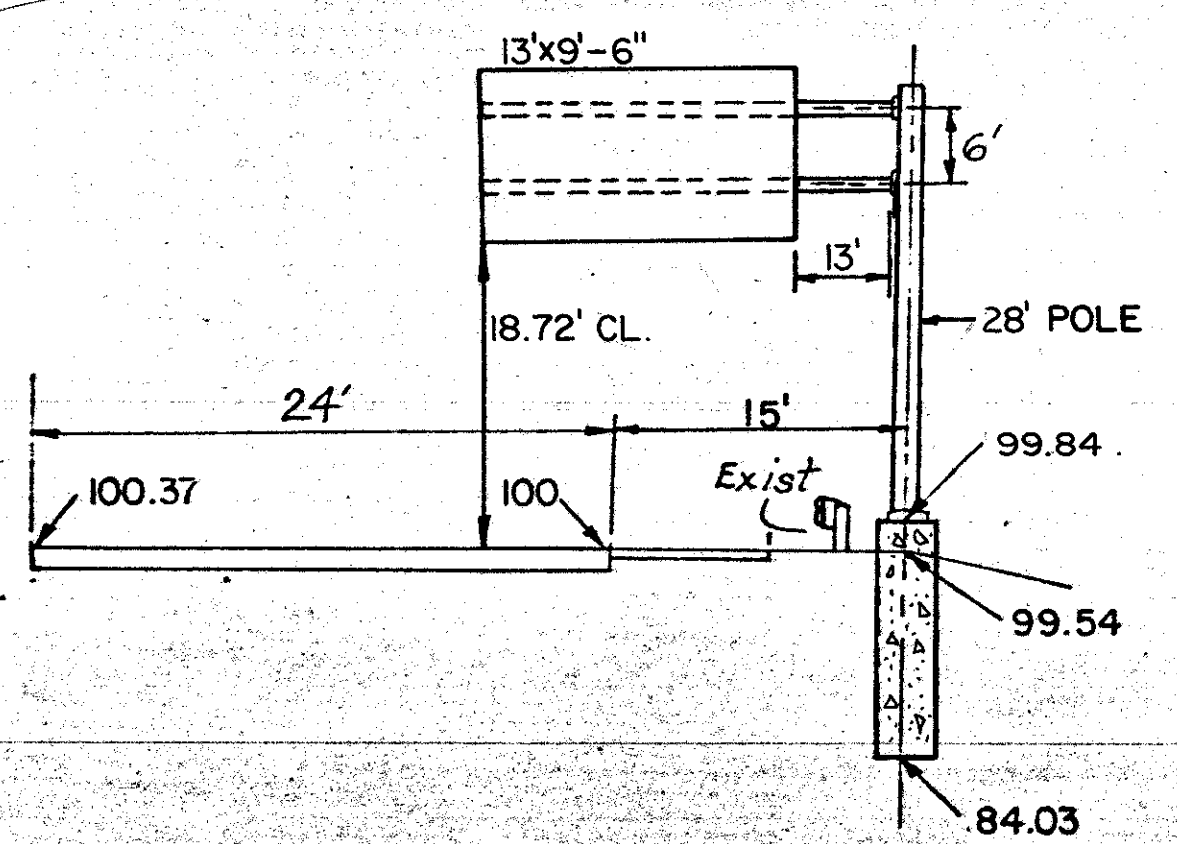
132



STA 293+50 E.B. S.R. 2
816 12.24 DESIGN #7 MOD. 22 ARMS

SIGN 18'x9'-6"
BRKT. SPACING - 8 5/8", 99 3/8", 99 3/8", 8 5/8"
No. OF BRKTS - 3 Z BRKTS, HT. - 9'-6"

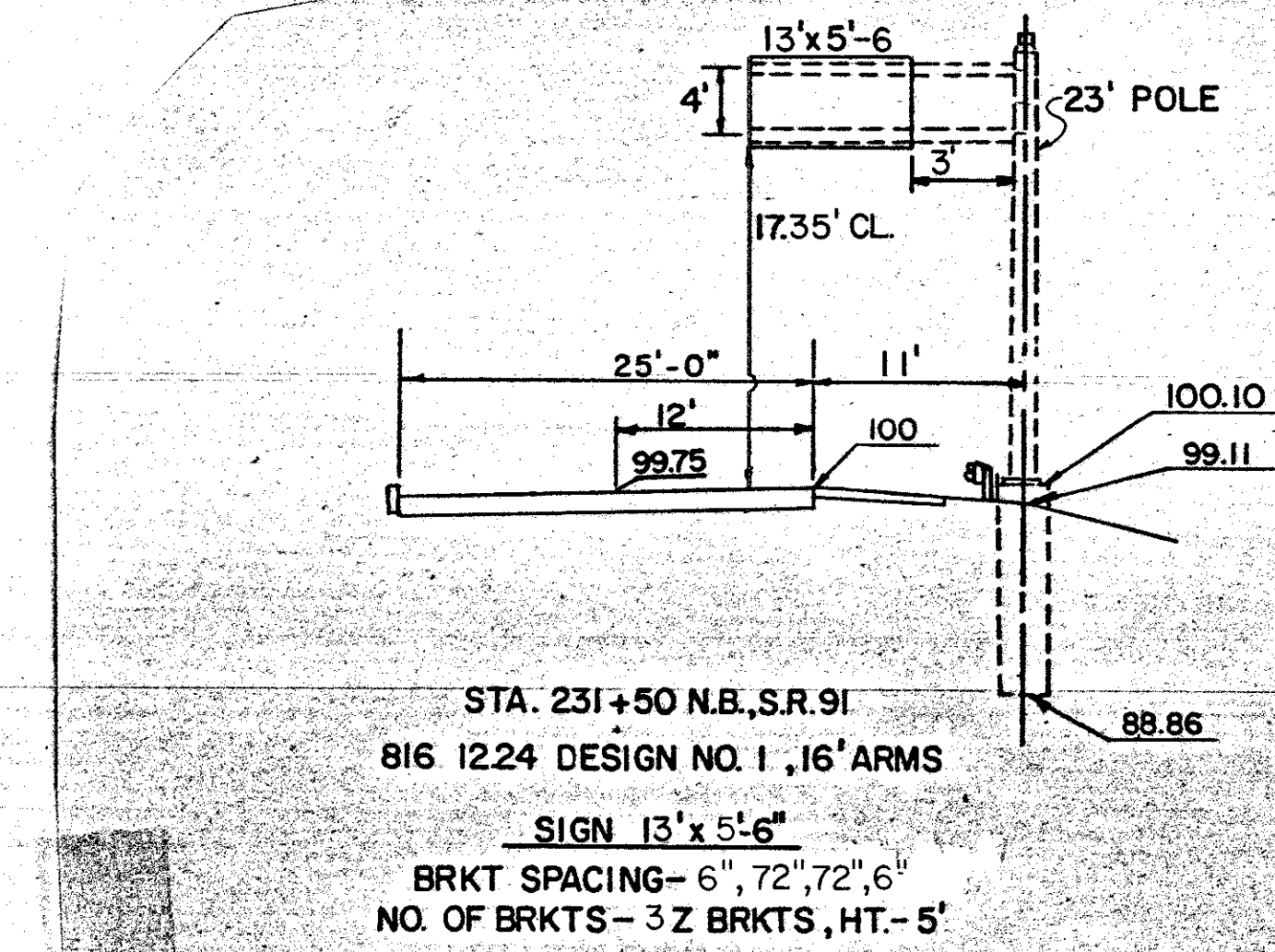
133



STA 294+40 W.B.
12.30 DESIGN #6 26 ARMS

SIGN 13'x9'-6"
BRKT. SPACING - 6", 72", 72", 6"
No. OF BRKTS - 3 Z BRKTS, HT. - 9'-6"

150



STA 231+50 N.B. S.R. 91
816 12.24 DESIGN NO. 1, 16 ARMS

SIGN 13'x5'-6"
BRKT. SPACING - 6", 72", 72", 6"
No. OF BRKTS - 3 Z BRKTS, HT. - 5'