

ITEM SPECIAL - FULL DEPTH RIGID PAVEMENT AND RIGID REPLACEMENT

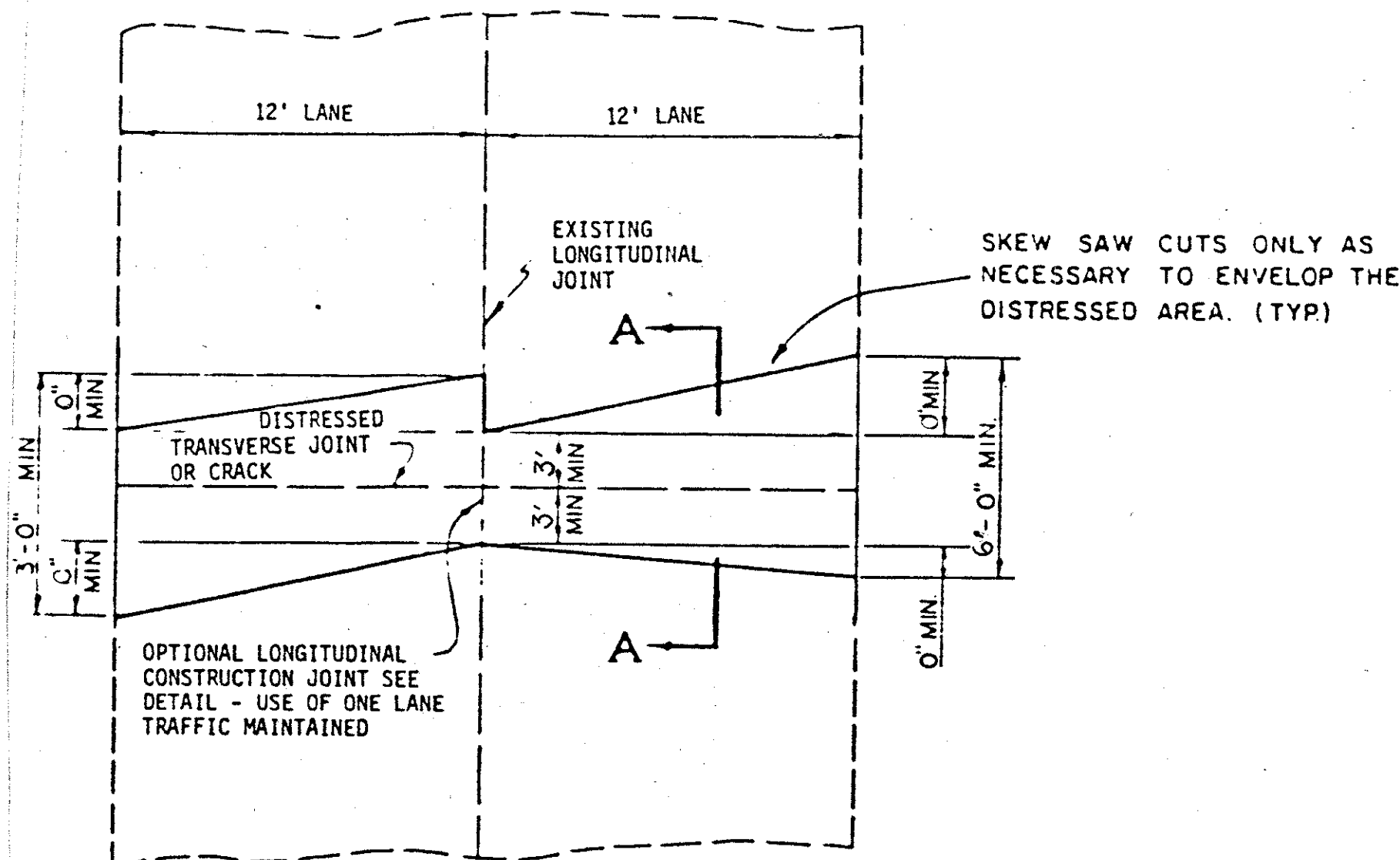
FHWA REGION	STATE	PROJECT
5	OHIO	

50
171

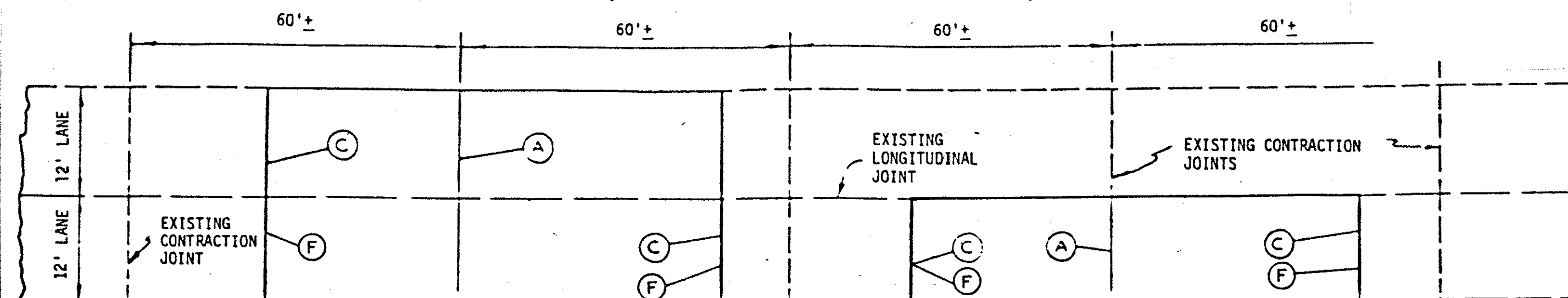
LAKE COUNTY
LAK-2-0.00

305 PAVEMENT REPLACEMENT DETAILS (PAVEMENT JOINTS OR CRACKS)

305 PAVEMENT REPLACEMENT DETAILS (PAVEMENT PANELS)



SEE SHEET 22 FOR QUANTITIES AND LOCATIONS

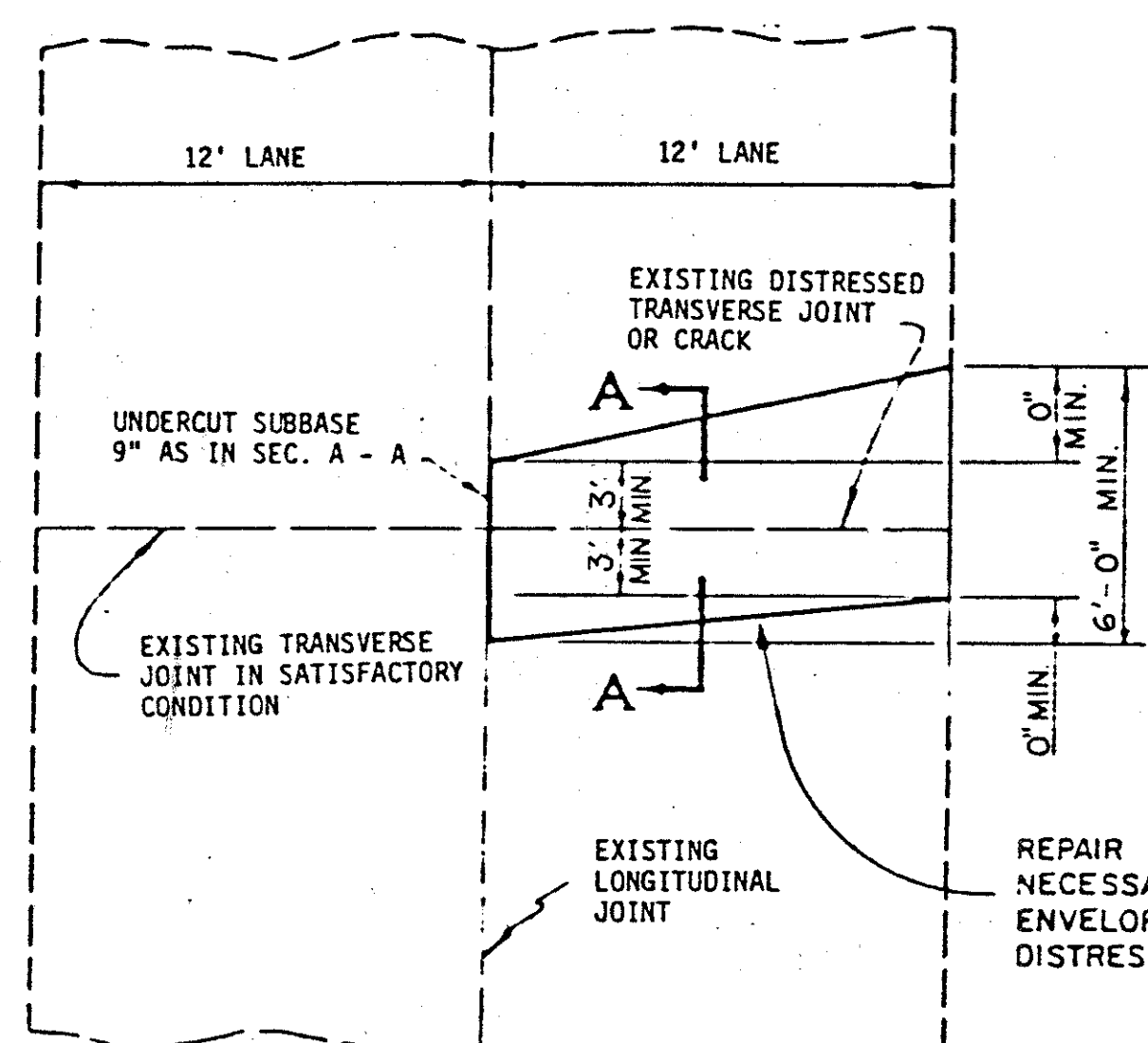


* REQUIRED IF PAVEMENT REPLACEMENT IS ADJACENT TO EXISTING PAVEMENT.

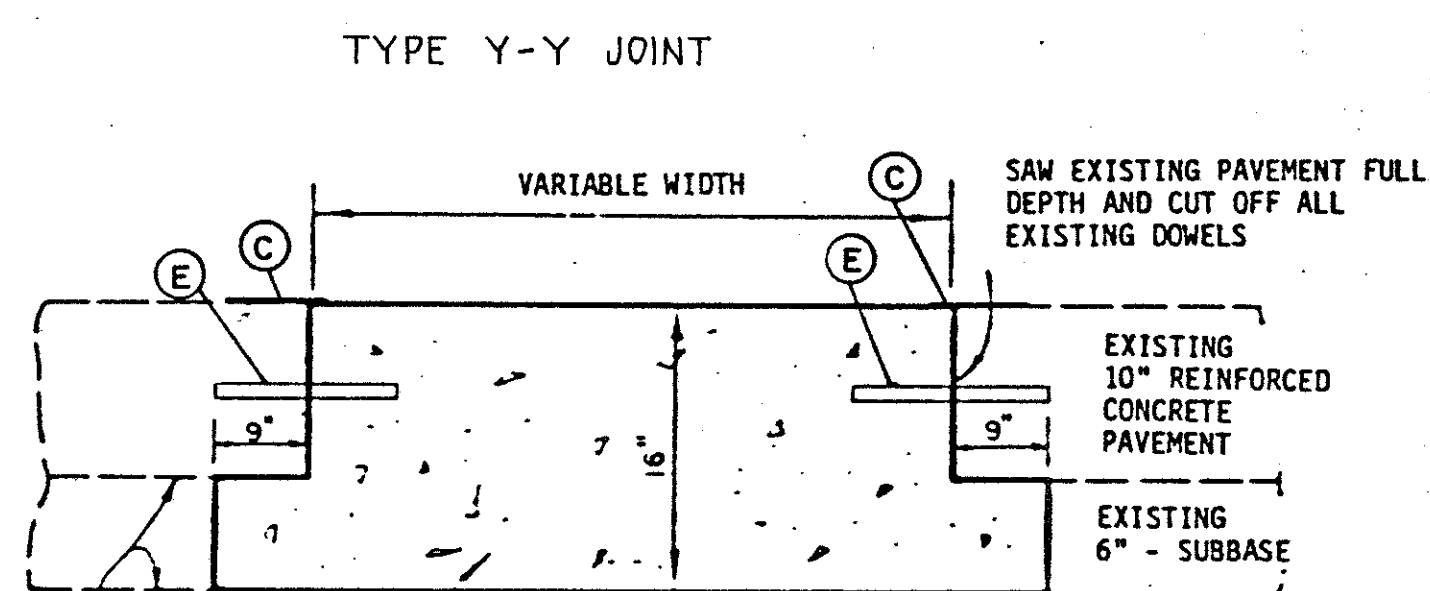
TYPICAL TWO LANE REPLACEMENT

TYPICAL ONE LANE REPLACEMENT

TWO LANE REPLACEMENT



SINGLE LANE REPLACEMENT



SECTION A-A

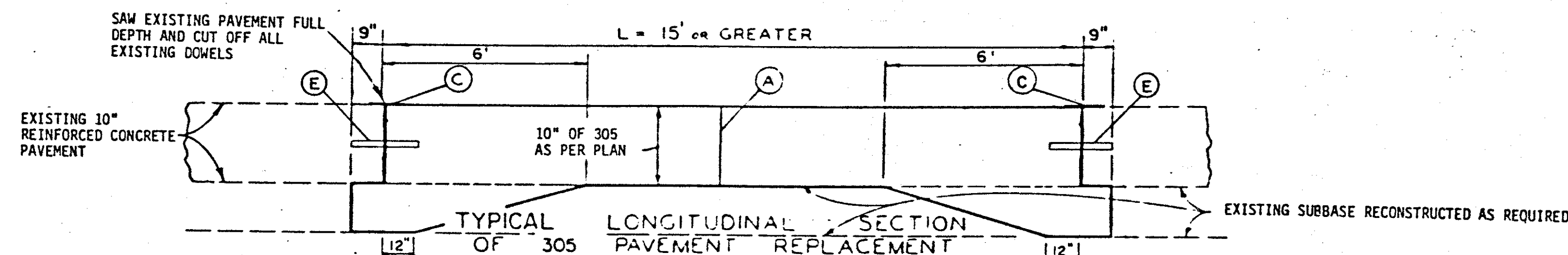
(A) TYPE N

(C) TYPE Y

(E) DOWEL

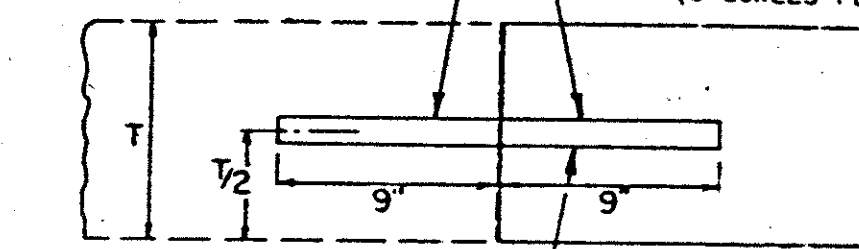
(F) SAWING

SEE SHEET 22 FOR QUANTITIES AND LOCATIONS



DOWEL HOLE AS PER ITEM 510. GROUT USING SS 956 EPOXY MORTAR OR AN APPROVED EQUAL.

1" DIAM. SMOOTH DOWEL. 3 DOWELS, 18" CENTER TO CENTER AT EACH WHEEL PATH (6 DOWELS PER JOINT)



DOWELLED CONSTRUCTION JOINT

NOTE:

THIS WORK IS FOR THE REPAIRING OF DETERIORATED TRANSVERSE PAVEMENT JOINTS AND OTHER SMALL DETERIORATED AREAS. THE LOCATION AND SIZES OF THE REPAIRS SHALL BE AT THE DIRECTION OF THE ENGINEER.

NOTE:

THIS WORK IS FOR THE REPAIRING OF THE LARGER SIZE DETERIORATED PAVEMENT AREAS OF EITHER SINGLE OR TWO LANE WIDTHS. THE LOCATIONS AND SIZES OF THESE REPAIRS SHALL BE AT THE DIRECTION OF THE ENGINEER.