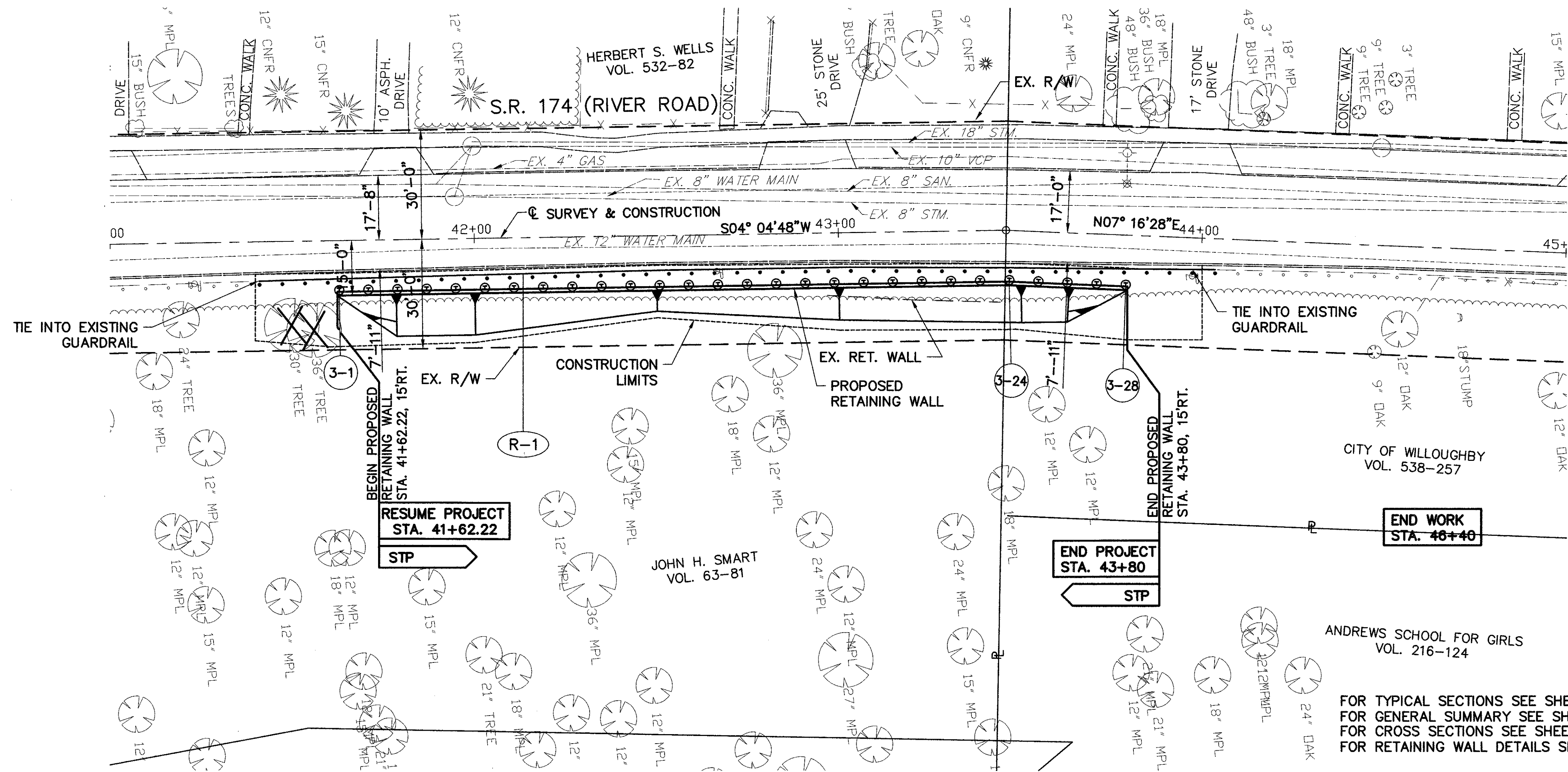
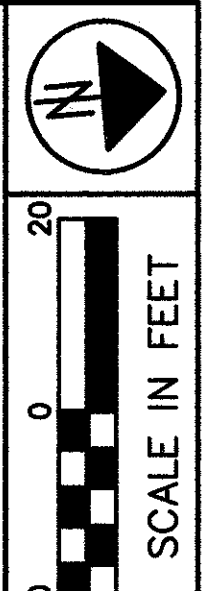
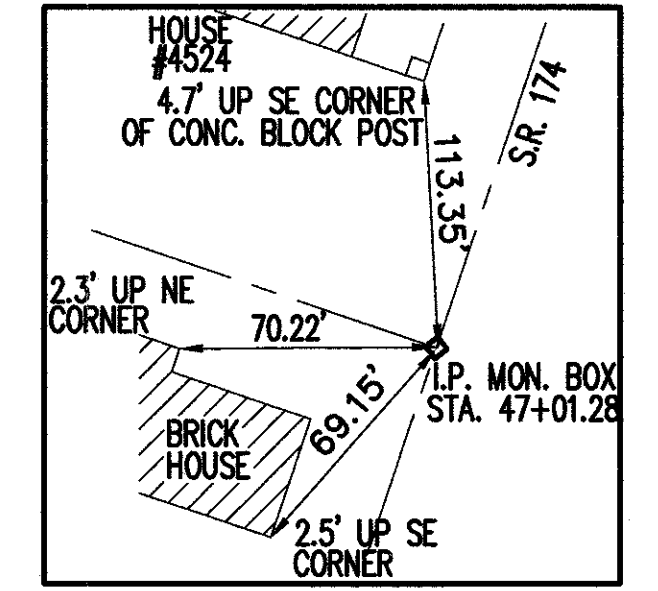
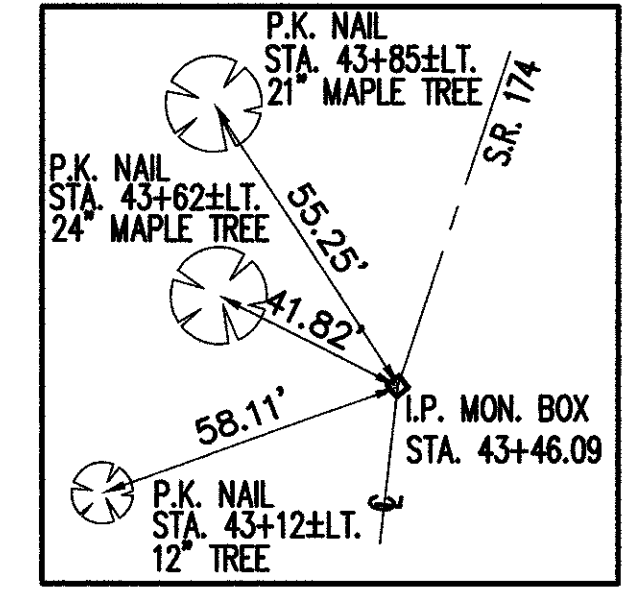


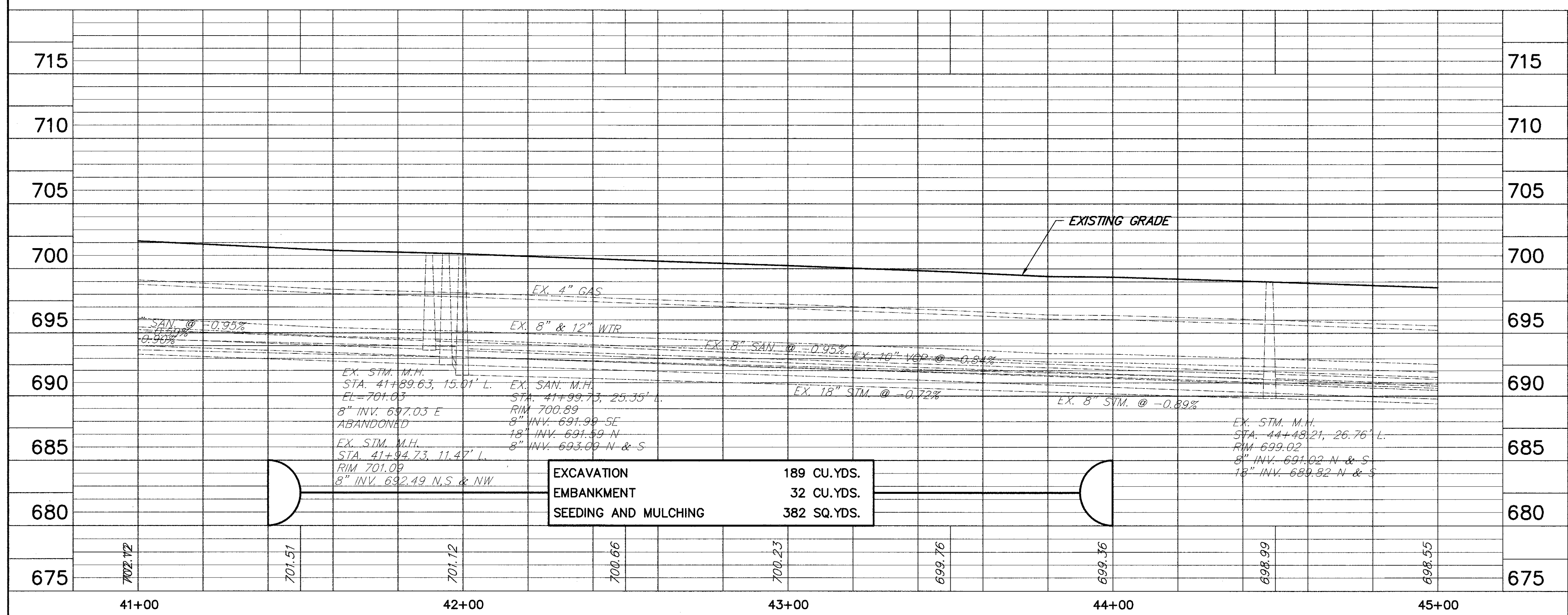
DATE: 09-20-96 - TIME: 08:34 - H:\CT\93119\CAD02\9311907A.DWG



BENCH MARK:  
BOTTOM STEP OF SOUTH EAST  
CORNER TO HOUSE #4548.  
STA. 46+20.32, 75.15' LT.  
ELEV. 699.54



ITEM NO.	DESCRIPTION	START STA.	END STA.	QUANTITY
606	GUARDRAIL, TYPE 5A	262.5	262.5	
202	GUARDRAIL REMOVED	262.5	262.5	
TOTALS				



REF.	LOCATION	START STA.	END STA.	QUANTITY
R-1	STA. 41+41, 10.8' RT. TO STA. 44+04, 84' RT.			
TOTALS				

ITEM 659 - WATER  
120 GALLONS/1,000 SQ. FT. OF PERMANENT SEEDING AND MULCHING AREA FROM ITEM 659 - SEEDING AND MULCHING = 382 SQ. YDS. 382 x 9 / 1,000 x 120 GALLONS = 412.56 GALLONS = 1 M GAL.

ITEM 659 - COMMERCIAL FERTILIZER  
20 LBS. /1,000 SQ. FT. OF PERMANENT SEEDING AND MULCHING AREA FROM ITEM 659 - SEEDING AND MULCHING = 382 SQ. YDS. 382 x 9 / 1,000 x 20 LBS. / 2,000 LBS./TON = 0.03 TONS

ITEM 659 - AGRICULTURAL LIMING  
100 LBS. /1,000 SQ. FT. OF PERMANENT SEEDING AND MULCHING AREA FROM ITEM 659 - SEEDING AND MULCHING = 382 SQ. YDS. 382 x 9 / 1,000 x 100 LBS. / 2,000 LBS./TON = 0.17 TONS

PLAN AND PROFILE  
STA. 41+00 TO STA. 45+00

LAK - 174 - 4.39