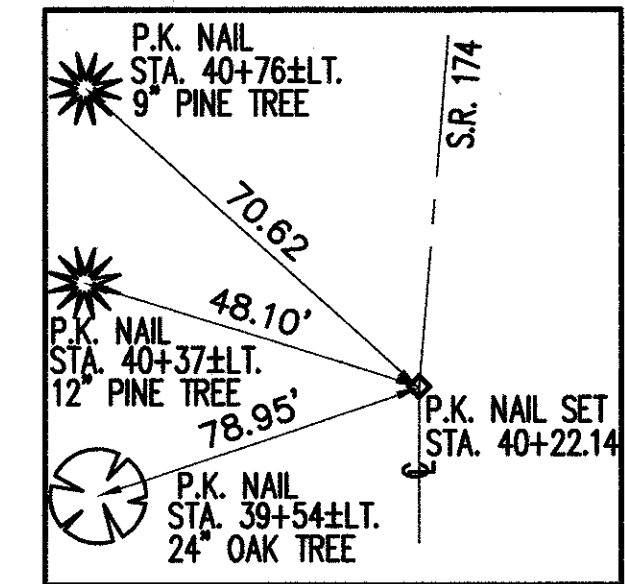
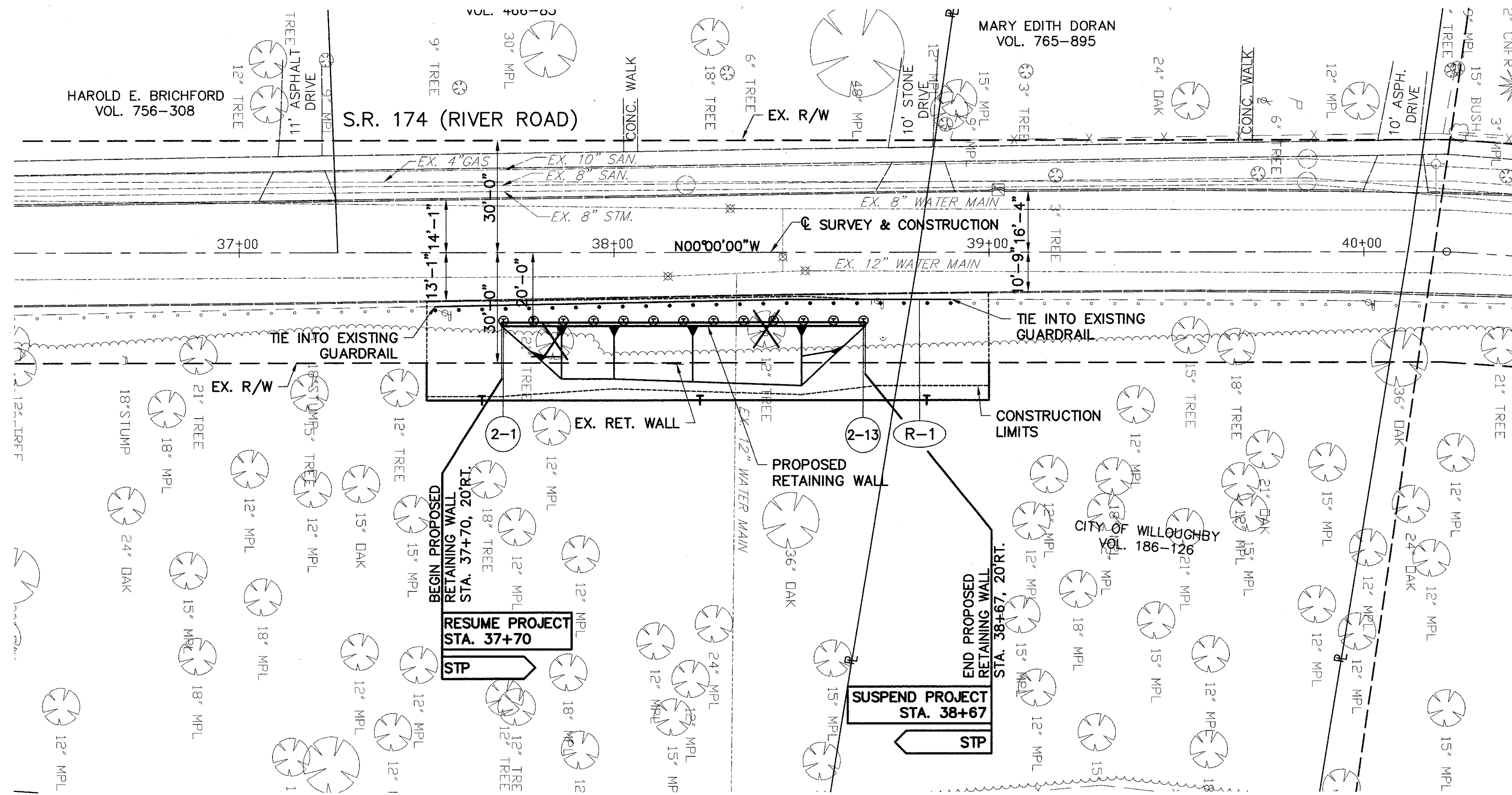
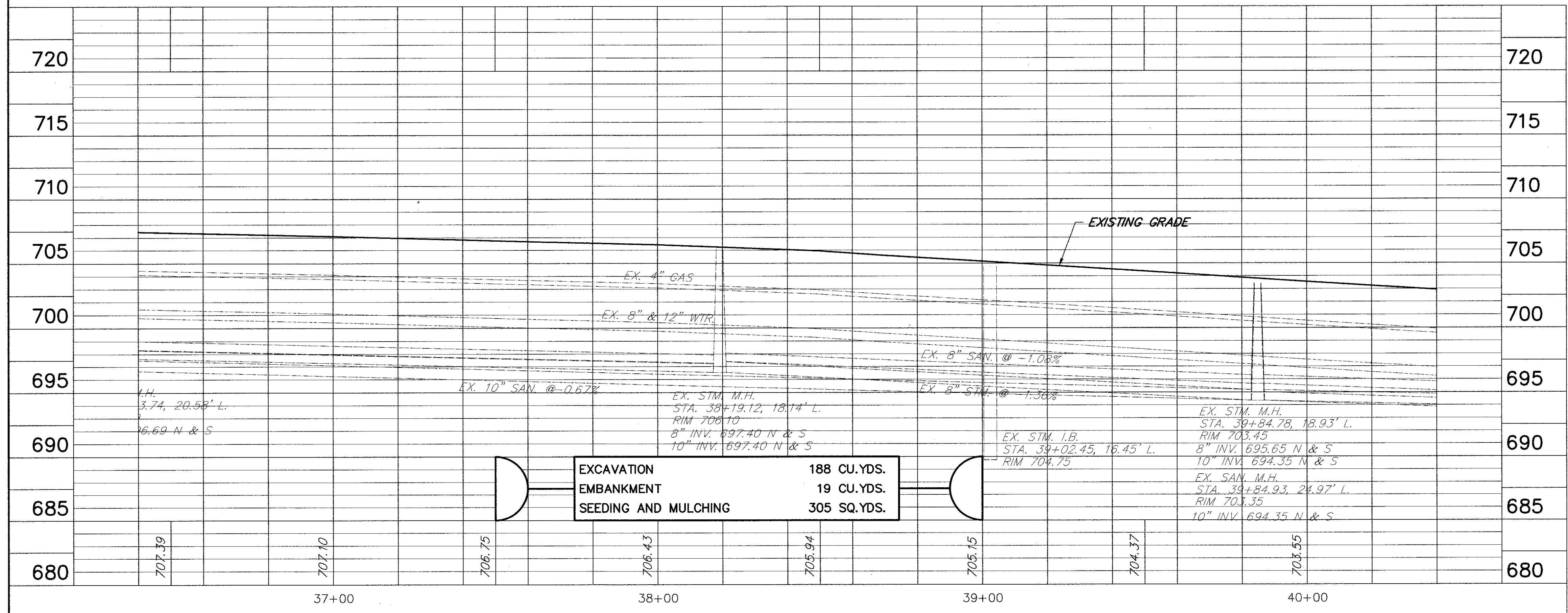


DATE: 09-20-96 - TIME: 08:29 - H:\CT\93119\CAD2\9311906A.DWG



BENCH MARK:
BOTTOM STEP OF SOUTH EAST
CORNER TO HOUSE #4548.
STA. 46+20.32, 75.15' LT.
ELEV. 699.54

ITEM NO.	DESCRIPTION	UNITS	QUANTITY
606	GUARDRAIL, TYPE 5A	LN.FT.	137.5
202	GUARDRAIL REMOVED	LN.FT.	137.5
TOTALS			137.5



ITEM 659 - WATER
120 GALLONS/1,000 SQ. FT. OF PERMANENT SEEDING AND MULCHING AREA FROM ITEM 659 - SEEDING AND MULCHING = 305 SQ. YDS. 305 x 9 / 1,000 x 120 GALLONS = 329.40 GALLONS = 1 M GAL

ITEM 659 - COMMERCIAL FERTILIZER
20 LBS. /1,000 SQ. FT. OF PERMANENT SEEDING AND MULCHING AREA FROM ITEM 659 - SEEDING AND MULCHING = 305 SQ. YDS. 305 x 9 / 1,000 x 20 LBS. / 2,000 LBS./TON = 0.03 TONS

ITEM 659 - AGRICULTURAL LIMING
100 LBS. /1,000 SQ. FT. OF PERMANENT SEEDING AND MULCHING AREA FROM ITEM 659 - SEEDING AND MULCHING = 305 SQ. YDS. 305 x 9 / 1,000 x 100 LBS. / 2,000 LBS./TON = 0.14 TONS

FOR TYPICAL SECTIONS SEE SHEETS 2-3.
FOR GENERAL SUMMARY SEE SHEET 13-14.
FOR CROSS SECTIONS SEE SHEETS 18-29.
FOR RETAINING WALL DETAILS SEE SHEETS 30-36.

PLAN AND PROFILE
STA. 36+40 TO STA. 40+40

LAK - 174 - 4.39

16
47