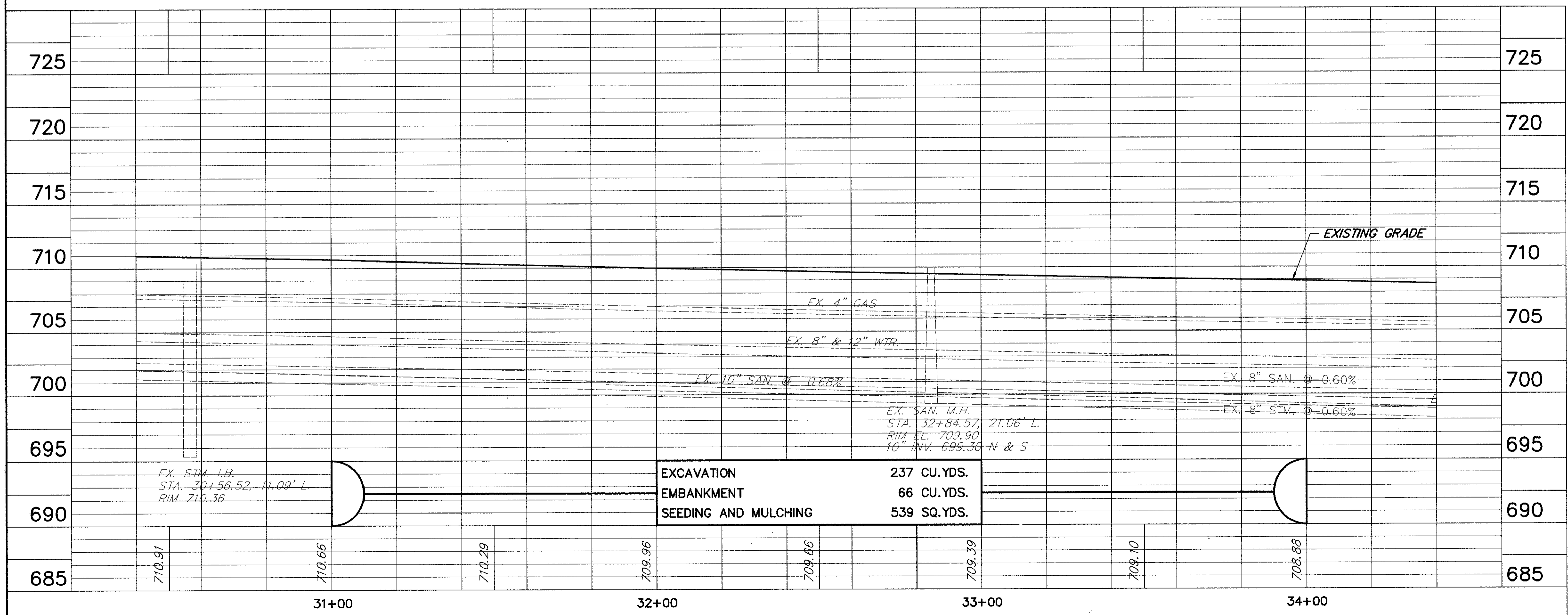
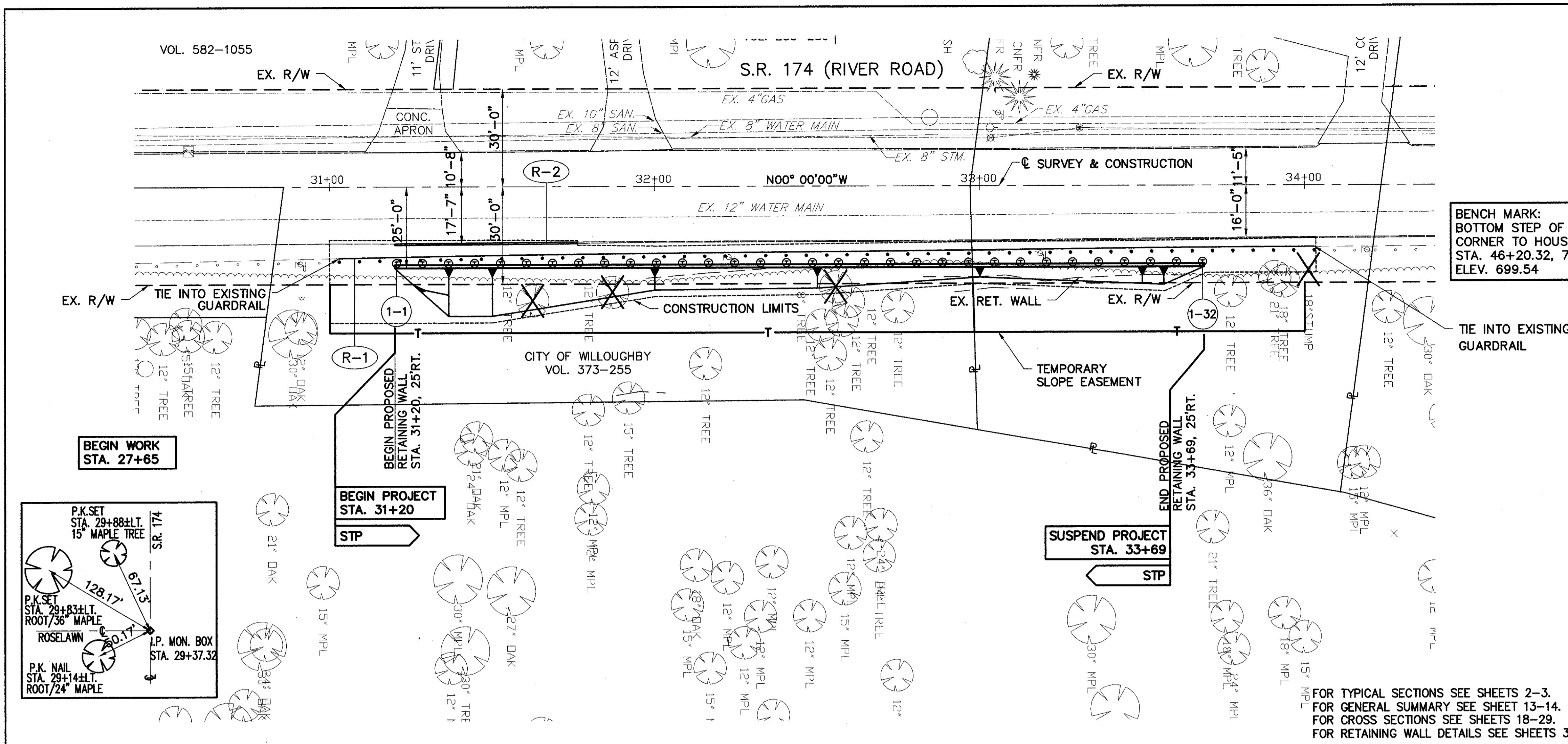


DATE: 09-20-96 - TIME: 08:21 - H:\CTV\93119\CAD\9311905A.DWG



609	CURB, TYPE 6	LINEAL FT.	56.0
606	GUARDRAIL, TYPE 5A	LINEAL FT.	300.0
202	GUARDRAIL REMOVED	LINEAL FT.	300.0
TOTALS			56.0

BENCH MARK:
 BOTTOM STEP OF SOUTH EAST
 CORNER TO HOUSE #4548.
 STA. 46+20.32, 75.15' LT.
 ELEV. 699.54

407	TACK COAT	GAL.	335
449	ASPHALT CONCRETE, SURFACE COURSE, TYPE 1	SQ. YDS.	155
TOTALS			335

STATION TO STATION	LENGTH FEET	PAVEMENT AREA	
		SQ. YDS.	GAL.
STA. 30+00.00 TO STA. 45+00.00	1,500.00	4,457	335
TOTALS			335

- ITEM 659 - WATER**
 120 GALLONS/1,000 SQ. FT. OF PERMANENT SEEDING AND MULCHING AREA FROM ITEM 659 - SEEDING AND MULCHING = 539 SQ. YDS. 539 x 9 / 1,000 x 120 GALLONS = 582.12 GALLONS = 1 M GAL.
- ITEM 659 - COMMERCIAL FERTILIZER**
 20 LBS. /1,000 SQ. FT. OF PERMANENT SEEDING AND MULCHING AREA FROM ITEM 659 - SEEDING AND MULCHING = 539 SQ. YDS. 539 x 9 / 1,000 x 20 LBS. / 2,000 LBS./TON = 0.05 TONS
- ITEM 659 - AGRICULTURAL LIMING**
 100 LBS. /1,000 SQ. FT. OF PERMANENT SEEDING AND MULCHING AREA FROM ITEM 659 - SEEDING AND MULCHING = 539 SQ. YDS. 539 x 9 / 1,000 x 100 LBS. / 2,000 LBS./TON = 0.24 TONS





 SCALE IN FEET

PLAN AND PROFILE
STA. 30+50 TO STA. 34+50

LAK - 174 - 4.39

15
47