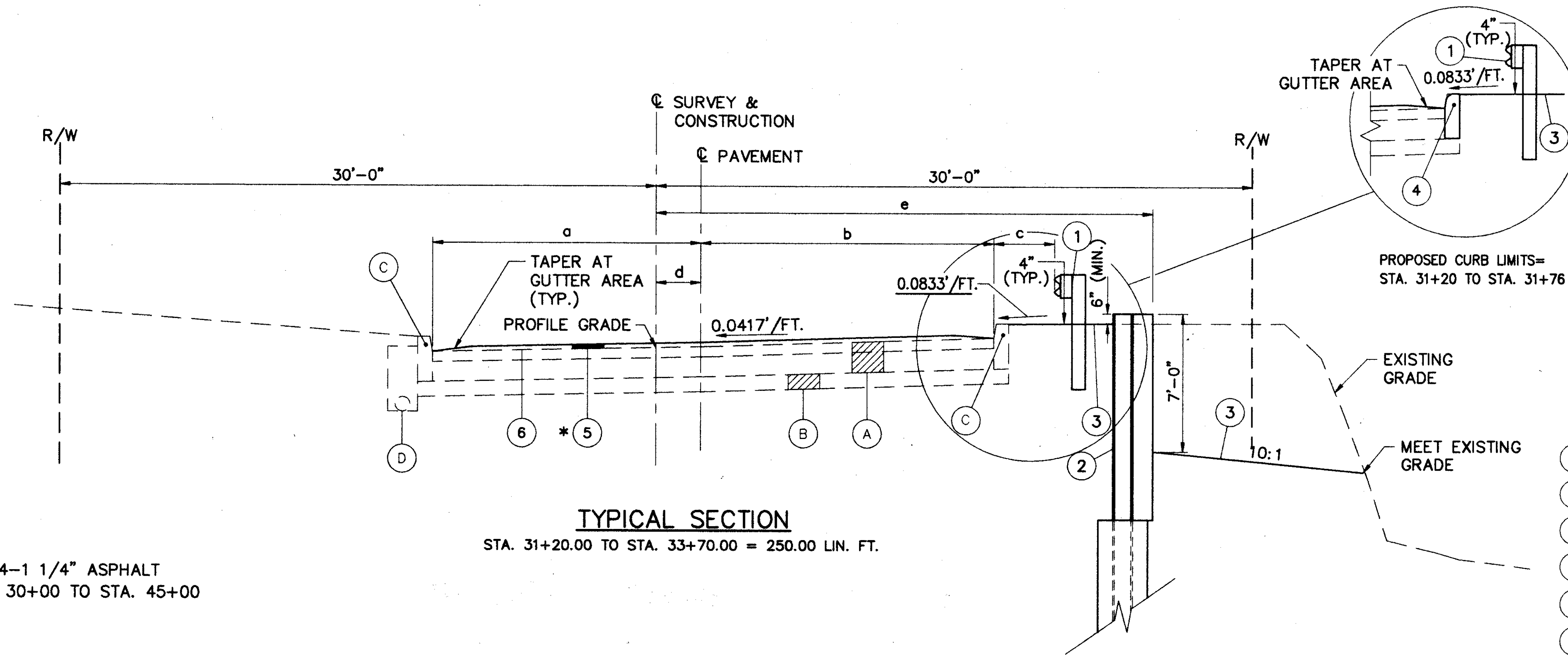


# TYPICAL SECTIONS

## TYPE 404



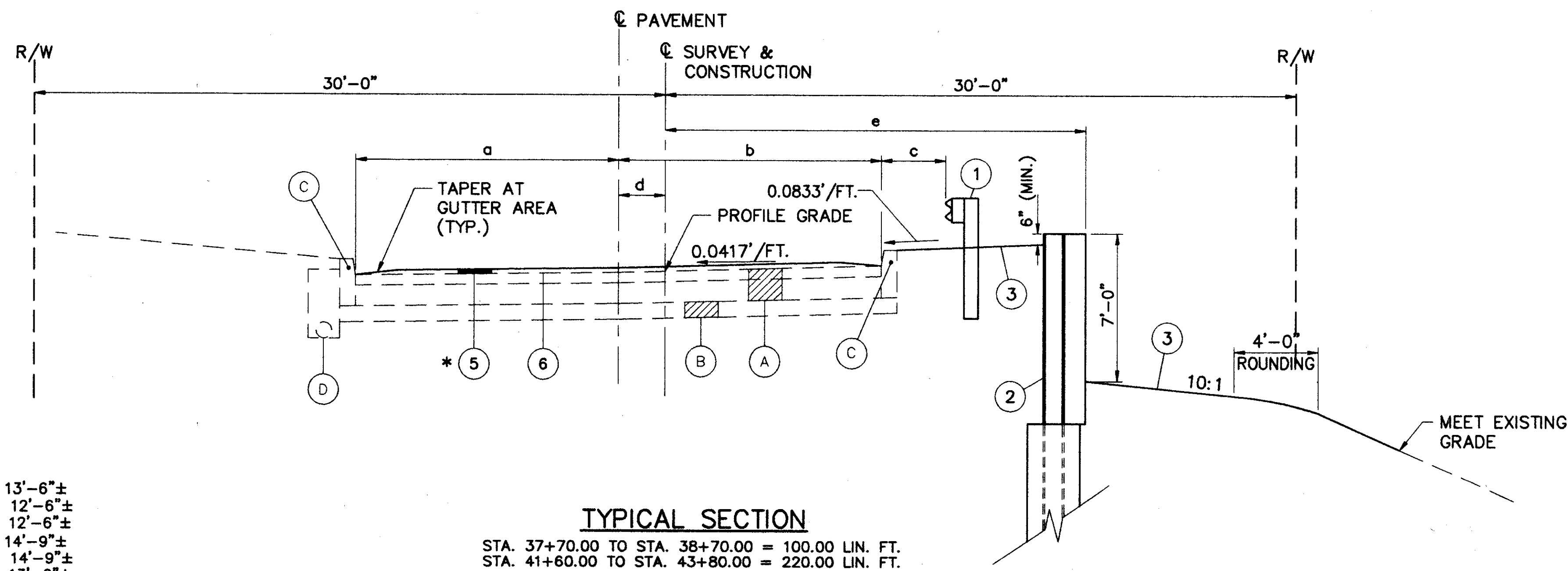
**TYPICAL SECTION**

STA. 31+20.00 TO STA. 33+70.00 = 250.00 LIN. FT.

\* LIMITS OF ITEM 404-1 1/4" ASPHALT CONCRETE = STA. 30+00 TO STA. 45+00

### LEGEND

- ① ITEM 606-GUARDRAIL, TYPE 5A
- ② RETAINING WALL
- ③ ITEM 659-SEEDING AND MULCHING
- ④ ITEM 609-CURB, TYPE 6
- ⑤ ITEM 404-1 1/4" ASPHALT CONCRETE, AC-20
- ⑥ ITEM 407-TACK COAT



**TYPICAL SECTION**

STA. 37+70.00 TO STA. 38+70.00 = 100.00 LIN. FT.  
STA. 41+60.00 TO STA. 43+80.00 = 220.00 LIN. FT.

- d. STA. 31+20.00 TO STA. 33+70.00 13'-6"±  
STA. 37+70.00 TO STA. 38+70.00 12'-6"±  
STA. 41+60.00 TO STA. 43+80.00 12'-6"±
- b. STA. 31+20.00 TO STA. 33+70.00 14'-9"±  
STA. 37+70.00 TO STA. 38+70.00 14'-9"±  
STA. 41+60.00 TO STA. 43+80.00 13'-0"±
- c. STA. 31+20.00 TO STA. 33+70.00 VARIES (4'-0" TO 2'-9")  
STA. 37+70.00 TO STA. 38+70.00 1'-6"  
STA. 41+60.00 TO STA. 43+80.00 2'-4"
- d. STA. 31+20.00 TO STA. 33+70.00 VARIES (3'-0" TO 1'-8")  
STA. 37+70.00 TO STA. 38+70.00 VARIES (2'-1" TO 3'-4")  
STA. 41+60.00 TO STA. 43+80.00 VARIES (5'-1" TO 5'-5")
- e. STA. 31+20.00 TO STA. 33+70.00 25'-0"  
STA. 37+70.00 TO STA. 38+70.00 20'-0"  
STA. 41+60.00 TO STA. 43+80.00 15'-0"

TYPICAL SECTIONS

LAK - 174 - 4.39

3  
47