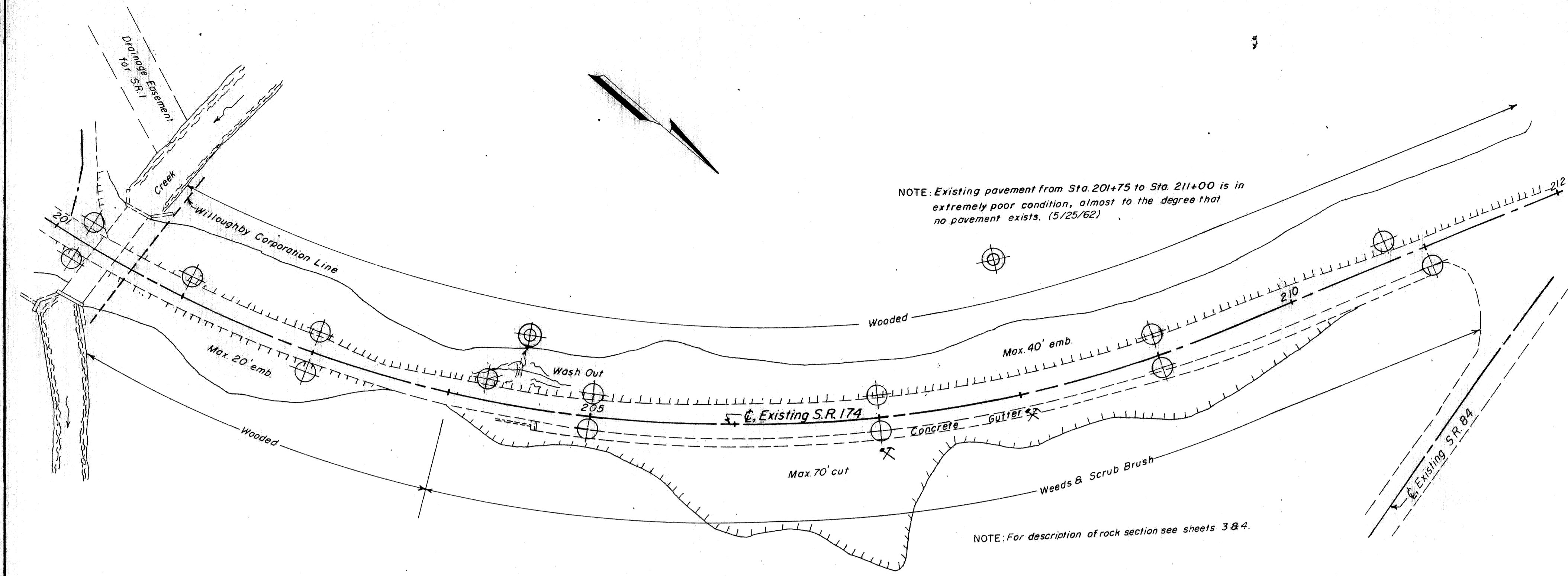
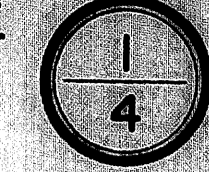


LEGEND FOR PROJECT

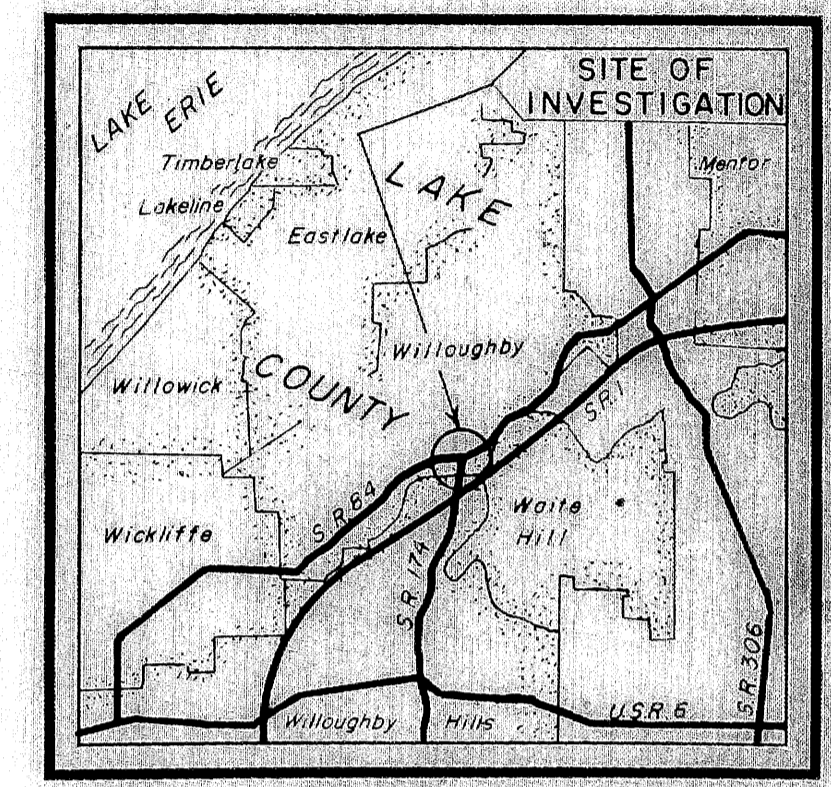
DESCRIPTION	OHIO CLASS
Gravel or stone fragments with sand	A-1-b
Coarse and fine sand	A-3a
Stone fragments with sand and silt	A-2-II
Sandy silt	A-1a
Silt and clay	A-6a
Silty clay	A-6c
Clay	A-7-C
Weathered shale	Visual
Shale	Visual
Various other material	Visual
Berm material.	
Auger boring - plan view.	
Drive sample-core boring - plan view.	
Auger boring plotted to vertical scale only.	
Drive sample-core boring plotted to vertical scale only.	
Number of blows for "Standard Penetration" test. 1 = number of blows for the first f inches. 2 = number of blows for the second f inches.	
Water content nearly equal to or greater than liquid limit.	

NOTE: Figures beside borings indicate water content in percent. e.g. 7

SETTLEMENT INVEST.
 LAKE COUNTY
 LAK-174-3.80
 OHIO STATE HIGHWAY
 TESTING LABORATORY
 1620 W. BROAD ST. COLUMBUS 23, OHIO



BORING PLAN
 Scale - 1" = 50'



LOCATION MAP
 Recon.: C.J.K., 5/25/62
 Core: K.D.E., 7/31/62
 Drilling: Auger: J.M.M., F.D.C., 7/26/62 to 7/31/62
 Drafting: J.K.L., O.L.S., 8/15/62

SUMMARY OF SOIL TEST DATA

NOTE: NP shown in Liquid Limit and Plasticity Index columns indicate that the material is non-plastic.

STATION & OFFSET	DEPTH	SPT					L.L.	P.I.	W.C.	CLASS.	SPT
		FRONT	AGG.	C.S.	F.S.	SILT					
201+00 15'Lt	0.0-5.0	13	2	5	21	33	11	11	A-6a		
	5.0-10.0	15	2	5	21	33	11	11	A-6a		
	10.0-15.0	11	2	5	21	33	11	11	A-6a		
	15.0-20.0	23	2	3	21	33	12	12	A-6a		
	20.0-25.0	11	2	5	21	33	11	11	A-6a		
	25.0-30.0	27	6	3	20	30	11	16	A-6a		
201+20 15'Lt	0.0-5.0	27	7	10	23	33	11	11	A-6a		
	5.0-10.0	35	3	5	21	33	11	11	A-6a		
	10.0-15.0	15	1	16	15	19	NP	NP	A-1a		
	15.0-20.0	37	3	8	27	25	13	13	A-6a		
	20.0-25.0	37	11	10	17	23	25	1	13	A-1a	
	25.0-30.0	16	3	8	27	25	13	13	A-6a		
202+00 15'Lt	0.0-5.0	34	7	6	21	29	15	11	A-6a		
	5.0-10.0	31	3	3	25	33	12	13	A-6a		
	10.0-15.0	26	11	7	35	33	11	15	A-6a		
	15.0-20.0	16	11	9	37	31	11	16	A-6a		
	20.0-25.0	19	11	10	31	31	12	16	A-6a		
	25.0-30.0	47	12	9	21	23	11	52	A-1a		
203+00 15'Lt	0.0-5.0	52	3	3	17	25	11	11	A-6a		
	5.0-10.0	42	4	7	23	21	11	11	A-6a		
	10.0-15.0	29	6	12	39	23	11	12	A-1a		
	15.0-20.0	31	5	3	26	30	11	17	A-6a		
	20.0-25.0	23	11	7	30	36	11	12	A-6a		
	25.0-30.0	22	3	6	26	43	11	17	A-7-6		
203+00 15'Lt	0.0-5.0	21	3	4	26	47	18	15	A-6b		
	5.0-10.0	30	2	2	21	36	11	11	A-6a		
	10.0-15.0	51	2	3	12	26	12	10	A-6a		
	15.0-20.0	30	3	3	25	31	11	17	A-6a		
	20.0-25.0	30	6	7	19	39	12	13	A-6a		
	25.0-30.0	35	6	17	18	31	11	14	A-6a		
204+25 15'Lt	0.0-5.0	10	11	7	23	26	11	15	A-6a		
	5.0-10.0	34	7	9	23	27	11	16	A-6a		
	10.0-15.0	35	7	13	20	25	11	16	A-6a		
	15.0-20.0	21	11	6	32	30	11	16	A-6a		
	20.0-25.0	27	5	8	33	27	11	19	A-6a		
	25.0-30.0	50	16	9	6	10	23	6	A-1-b		
205+00 15'Lt	0.0-5.0	29	5	9	24	33	11	13	A-6a		
	5.0-10.0	39	9	7	18	27	11	12	A-6a		
	10.0-15.0	27	9	7	18	33	11	12	A-6a		
	15.0-20.0	27	6	8	20	39	11	16	A-6a		
	20.0-25.0	27	6	8	20	39	11	16	A-6a		
	25.0-30.0	27	6	8	20	39	11	16	A-6a		
205+00 0' Rt	0.0-5.0	Brownish-Gray Sandy Silt and Broken Shale Fragments					9	7	Visual		
	5.0-6.0	Gray Broken Weathered Shale					9	7	Visual		
	6.0-10.0	Gray Broken Weathered Shale					9	7	Visual		
207+00 15' Lt	0.0-2.0	11	3	7	27	22	25	6	12	A-1a	
	2.0-5.0	32	11	9	25	30	27	11	11	A-6a	
	5.0-7.0	30	8	7	18	23	23	7	11	A-1a	
	7.0-9.0	Gray Broken Weathered Shale					9	7	Visual		
	9.0-11.0	Gray Broken Weathered Shale					9	7	Visual		
	11.0-13.0	Gray Broken Weathered Shale					9	7	Visual		
207+00 0' Rt	0.0-2.0	Gray Broken Weathered Shale					5	7	Visual		
	2.0-5.0	Gray Broken Weathered Shale					5	7	Visual		
	5.0-7.0	Gray Broken Weathered Shale					5	7	Visual		
209+00 15' Lt	0.0-2.0	34	5	5	31	25	11	10	A-6a		
	2.0-5.0	47	3	4	20	26	11	14	A-6a		
	5.0-7.0	35	13	7	9	NP	NP	6	A-1-b		
	7.0-11.0	39	6	7	23	25	23	6	A-1a		
	11.0-14.0	20	29	32	10	10	NP	NP	11	A-3a	
	14.0-15.0	13	29	41	3	14	NP	NP	17	A-3a	
210+75 15' Lt	0.0-5.0	16	11	7	31	27	11	16	A-6a		
	5.0-6.0	47	3	4	20	26	11	14	A-6a		
	6.0-7.0	35	13	7	9	NP	NP	6	A-1-b		
	7.0-11.0	39	6	7	23	25	23	6	A-1a		
	11.0-14.0	20	29	32	10	10	NP	NP	11	A-3a	
	14.0-15.0	13	29	41	3	14	NP	NP	17	A-3a	
211+00 15' Rt	0.0-5.0	21	3	5	27	21	27	11	15	A-6a	
	5.0-9.0	12	3	5	32	23	11	16	A-6a		
	9.0-11.0	23	22	27	10	13	13	4	A-1-b		
	11.0-14.0	22	7	11	29	31	23	7	10	A-1a	
	14.0-18.0	0	19	16	22	14	NP	NP	11	A-1a	
	18.0-21.0	14	8	18	22	31	22	6	13	A-1a	
211+00 15' Lt	0.0-5.0	32	4	7	30	27	11	9	A-6a		
	5.0-9.0	12	3	5	32	23	11	16	A-6a		
	9.0-11.0	23	22	27	10	13	13	4	A-1-b		
	11.0-14.0	22	7	11	29	31	23	7	10	A-1a	
	14.0-18.0	0	19	16	22	14	NP	NP	11	A-1a	
	18.0-21.0	14	8	18	22	31	22	6	13	A-1a	
214+50 50' Lt	5.0-6.0	0	3	5	45	47	27	11	18	A-6a	
	7.5-8.5	13	12	22	27	26	21	5	17	A-1a	
	10.0-11.0	17	9	16	23	31	22	8	19	A-1a	
	12.5-13.5	22	7	12	30	29	25	7	21	A-1a	
	15.0-16.0	33	5	9	29	21	24	7	14	A-1a	
	25.0-26.0	Gray Silty Clay and Soft Shale					11	11	Visual		
200+00 05' Lt	5.0-6.0	10	3	5	31	16	32	11	13	A-6a	

DRIVE SAMPLE SOIL TEST DATA

STATION & OFFSET	DEPTH	FRONT	AGG.	C.S.	F.S.	SILT	CLAY	L.L.	P.I.	W.C.	CLASS.
204+50	50' Lt	5.0-6.0	0	3	5	45	47	27	11	18	A-6a
		7.5-8.5	13	12	22	27	26	21	5	17	A-1a
		10.0-11.0	17	9	16	23	31	22	8	19	A-1a
		12.5-13.5	22	7	12	30	29	25	7	21	A-1a
		15.0-16.0	33	5	9	29	21	24	7	14	A-1a
		25.0-26.0	Gray Silty Clay and Soft Shale					11	11	Visual	
200+00	05' Lt	5.0-6.0	10	3	5	31	16	32	11	13	A-6a