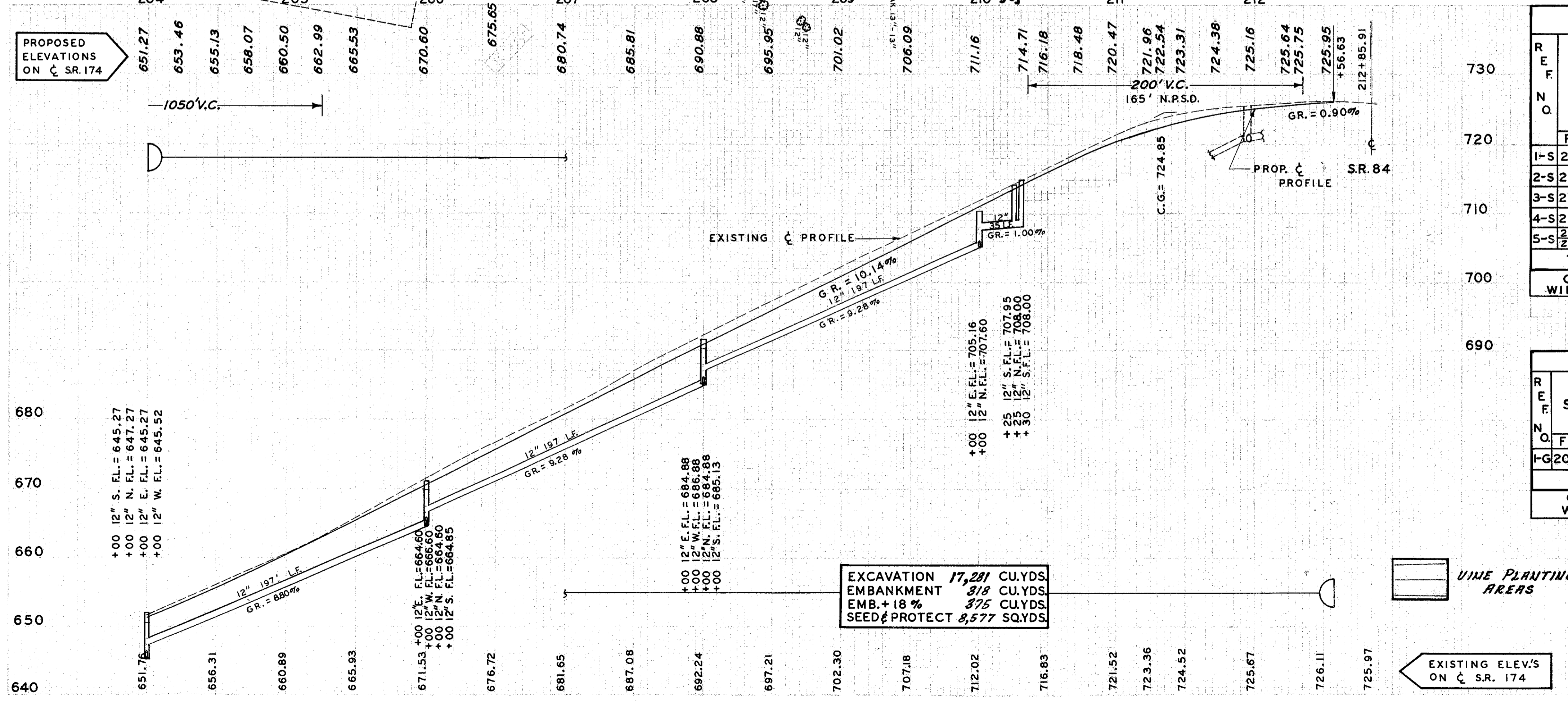
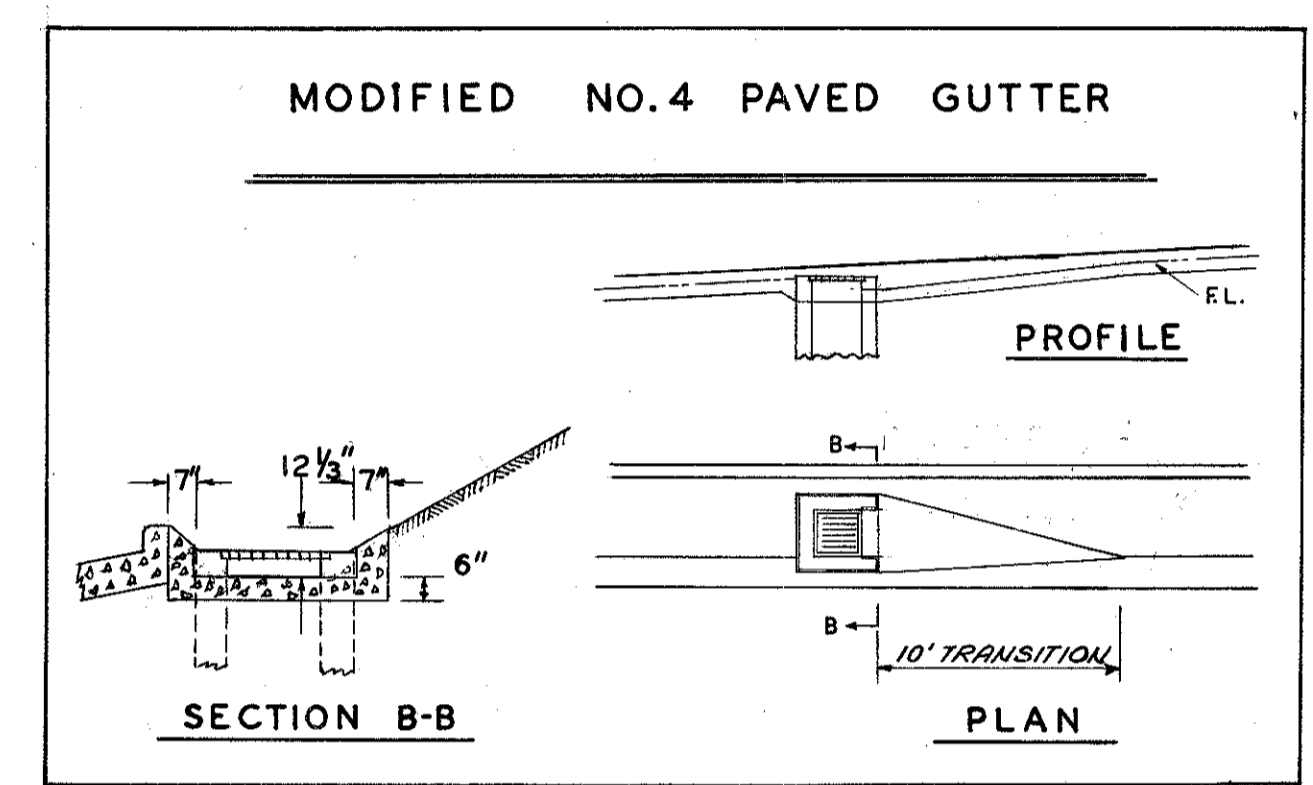
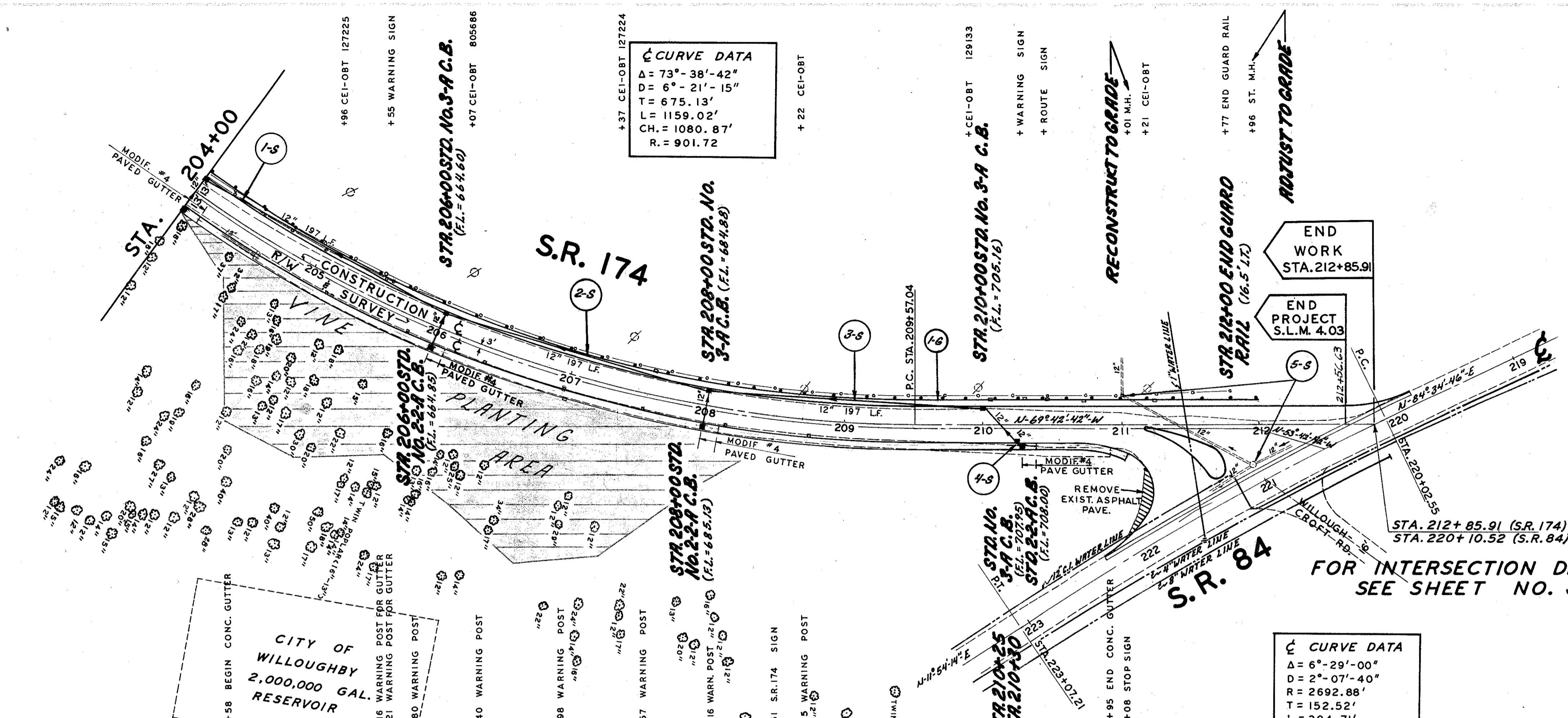


**BENCH**  
STATE MON.  
S.W. CORNER S.R. 84 &  
S.R. 174,  
ELEV. = 727.35



DRAINAGE QUANTITIES						
REF. NO.	STATION	I-1		I-8		E-12
		12" CLASS J-1 ST. SEWER	STD. NO. 2-2-A C.B.	STD. NO. 3-A C.B.	MAN-HOLE Adj. to Grate	MAN-HOLE Reconst. to Grate
	FROM TO	LIN. FT.	EACH			LIN. FT.
1-S	204+00 206+00	221	1	1		40
2-S	206+00 208+00	221	1	1		
3-S	208+00 210+25	233		2		
4-S	210+25 210+30	6	1			
5-S	211+01 211+96					
<b>TOTALS</b>		<b>681</b>	<b>3</b>	<b>4</b>	<b>/</b>	<b>40</b>

CITY OF WILLOUGHBY

GUARD RAIL				
REF. NO.	STATION	SIDE	I-15	
			GUARD RAIL STD. STEEL BEAM TYPE (DEEP)	GUARD RAIL REMOVED & DISPOSED
	FROM TO	L	LIN. FT.	
1-G	204+00 212+00	L	789	1055
<b>TOTALS</b>			<b>789</b>	<b>1055</b>

CITY OF WILLOUGHBY

L-12 PLANTING VINES				
STATION FROM TO	SPACING	SCIENTIFIC NAME	COMMON NAME	QUANTITY EACH
204+00 208+00	3'-0" CTR. TO CTR.	LONICERA JAPONICA	HALL' JAPANESE HONEY-SUCKLE	4,992
TO BE USED AS DIRECTED BY THE ENGINEER				508
<b>TOTAL</b>				<b>5,500</b>

CITY OF WILLOUGHBY

EXCAVATION 17,281 CU.YDS.  
EMBANKMENT 318 CU.YDS.  
EMB. + 18% 375 CU.YDS.  
SEED & PROTECT 8,577 SQ.YDS.