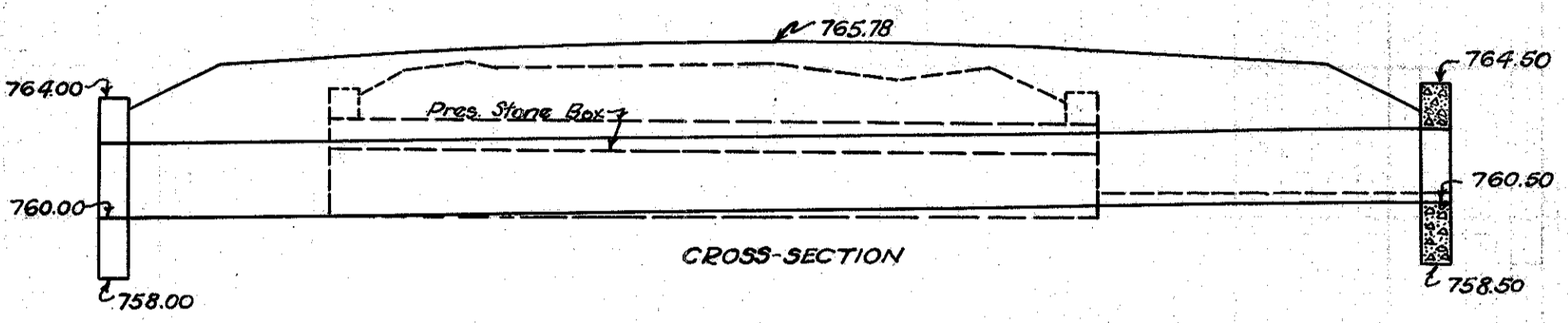
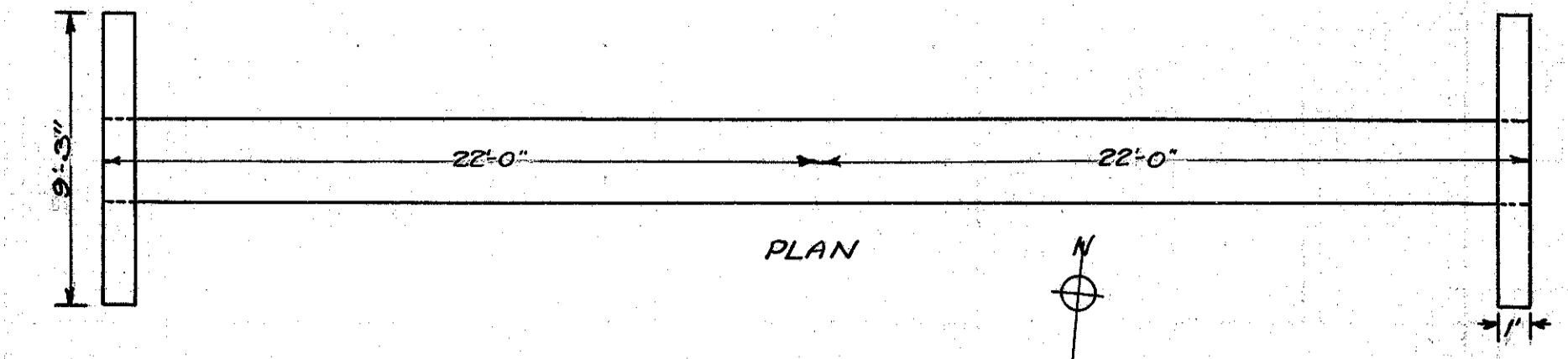


30 25 20 15 10 5 ± 5 10 15 20 25 30

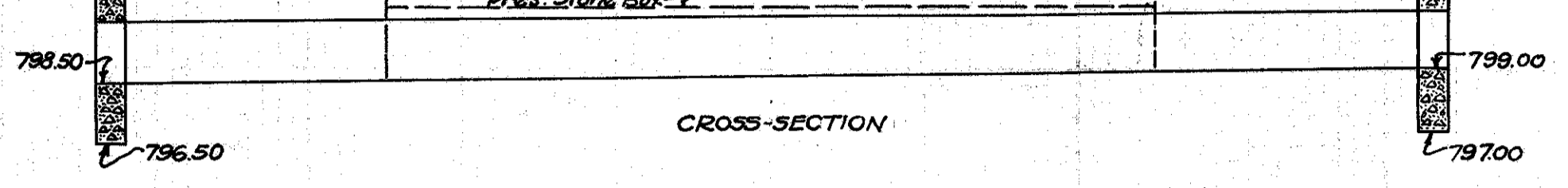
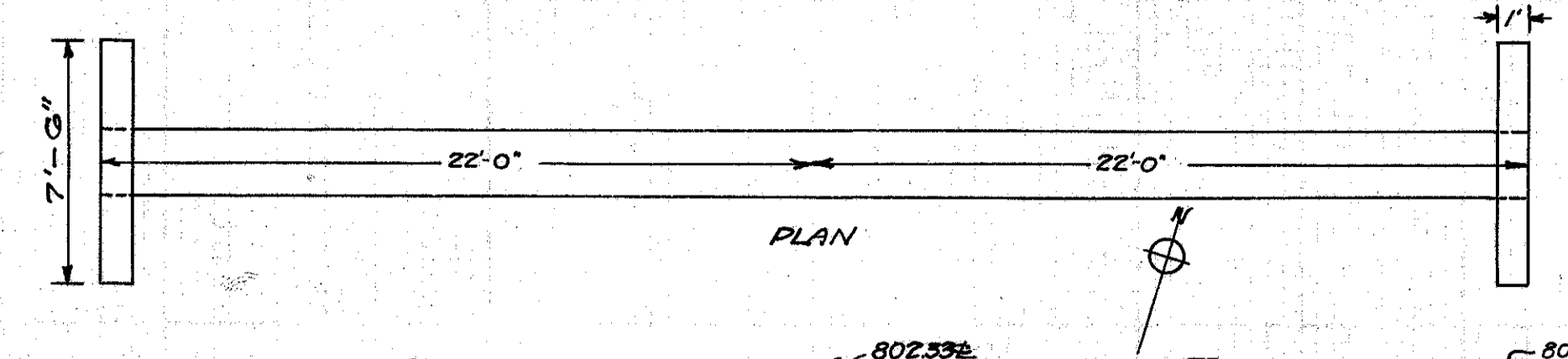


CULVERT DATA
 Type: Std. Cast Iron Pipe Culv. Std. Dwg. S-27 P.C. 1+2
 Size: 30" x 44"
 Work Req: Remove exist. stone box culvert and build 30" x 44" Std. Cast iron culvert with H.W. on R+L.

EST. QUANTITIES
 Exc. 6 Cu.Yds.
 30" Cast Iron Pipe 44 Lin.Ft.
 1-5/2 Con. 3.8 Cu.Yds.
 Reinf. Steel 76 Lbs.
 Stone Masonry Rem. 19 Cu.Yds.

Drawn by: Plummer Date: 1/25/33
 Checked by: Div'n Engr. Date: Sta. 132+78

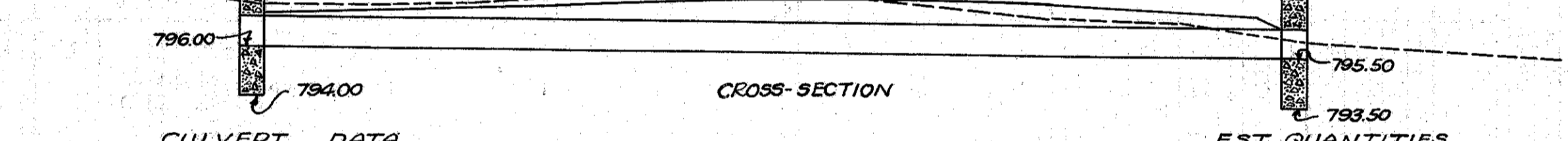
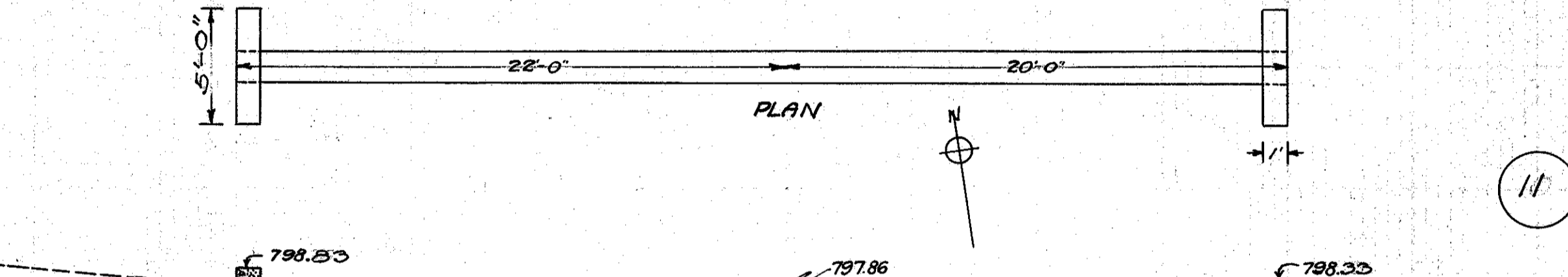
30 25 20 15 10 5 ± 5 10 15 20 25 30



CULVERT DATA
 Type: Std. Cast Iron pipe culvert Std. Dwg. S-27 P.C. 1+2
 Size: 24" x 44"
 Work Req: Remove exist. 2'x2'6" stone box culvert and build Std. 24" x 44" Cast iron pipe culvert with H.W. on R+L. Open outlet on L.

EST. QUANTITIES
 Exc. 3 Cu.Yds.
 24" Cast iron pipe 44 Lin.Ft.
 1-5/2 Con. 2.8 Cu.Yds.
 Reinf. Steel 64 Lbs.
 Stone Masonry Removed 21 Cu.Yds.

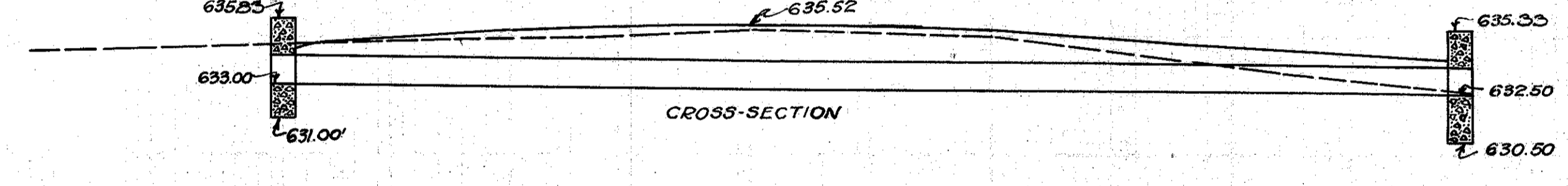
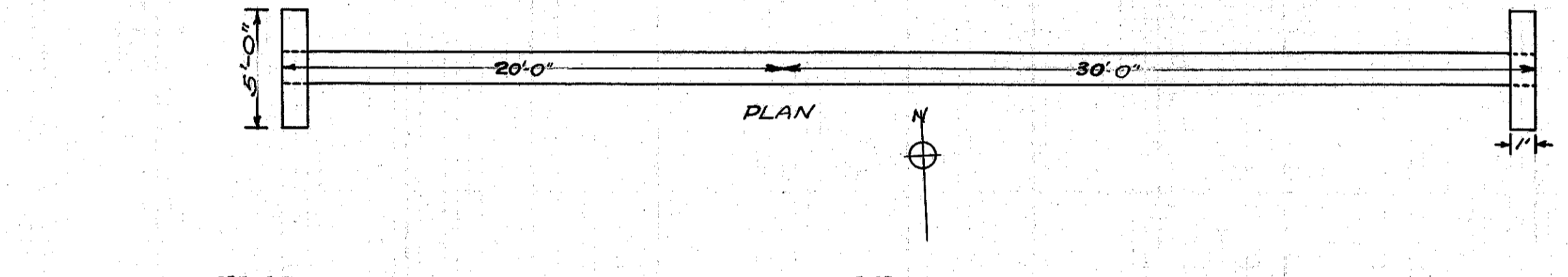
Drawn by: Plummer Date: 1/27/33
 Checked by: Div'n Engr. Date: Sta. 106+50



CULVERT DATA
 Type: Std. Cast Iron pipe culvert Std. Dwg. S-27 P.C. 1+2
 Size: 16" x 42"
 Work Req: Remove existing 12" x 30" Cor. I.P. and build 16" x 42" Std. Cast iron pipe culv. with H.W. on R+L.

EST. QUANTITIES
 Exc. 13 Cu.Yds.
 16" Cast Iron Pipe 42 Lin.Ft.
 1-5/2 Con. 1.7 Cu.Yd.
 Reinf. Steel 47 Lbs.
 12" Cor. I.P. removed 30 Lin.Ft.

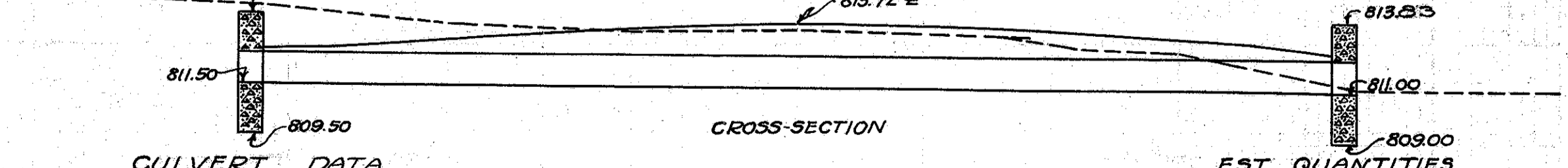
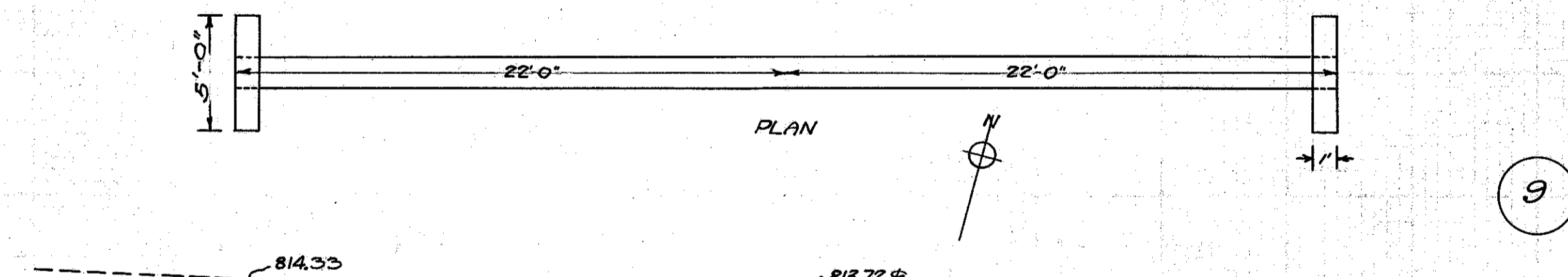
Drawn by: Plummer Date: 1/25/33
 Checked by: Div'n Engr. Date: Sta. 117+0



CULVERT DATA
 Type: Std. Cast Iron pipe culvert Std. Dwg. S-27 P.C. 1+2
 Size: 16" x 50"
 Work Req: Remove existing 6" x 38" Vit. Pipe culv. and build 16" x 50" Std. Cast iron pipe culvert with H.W. on R+L.

EST. QUANTITIES
 Exc. 9 Cu.Yds.
 6" V.P. removed 38 Lin.Ft.
 16" Cast Iron Pipe 50 Lin.Ft.
 1-5/2 Con. 1.7 Cu.Yds.
 Reinf. Steel 47 Lbs.

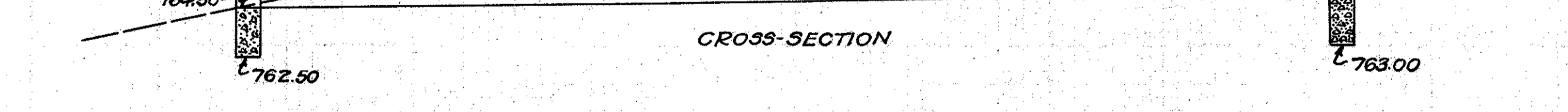
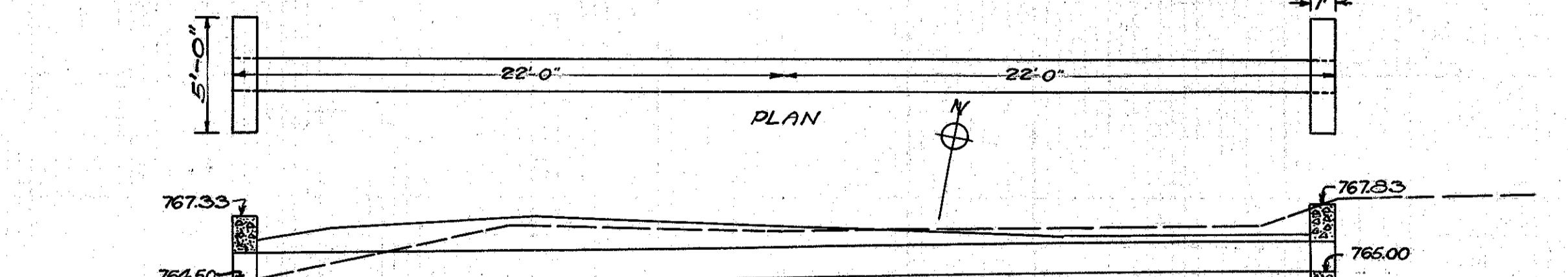
Drawn by: Plummer Date: 1/27/33
 Checked by: Div'n Engr. Date: Sta. 183+62



CULVERT DATA
 Type: Std. Cast Iron Pipe Culvert Std. Dwg. S-27 P.C. 1+2
 Size: 16" x 44"
 Work Req: Remove exist. 12" x 20" Cor. pipe and 12" x 4" V.P. culv. and build Std. 16" x 44" Cast iron pipe culvert with H.W. on R+L. Open outlet on R.

EST. QUANTITIES
 Exc. 15 Cu.Yds.
 16" Cast Iron Pipe 44 Lin.Ft.
 1-5/2 Con. 1.7 Cu.Yds.
 Reinf. Steel 47 Lbs.
 12" Cor. I.P. removed 20 Lin.Ft.
 12" V.P. 4 "

Drawn by: Plummer Date: 1-25-33
 Checked by: Div'n Engr. Date: Sta. 97+53



CULVERT DATA
 Type: Std. Cast Iron pipe Culvert Std. Dwg. S-27 P.C. 1+2
 Size: 16" x 44"
 Work Req: Build 16" x 44" Std. Cast iron pipe culvert with H.W. on R+L.

EST. QUANTITIES
 Exc. 10 Cu.Yds.
 16" Cast Iron Pipe 44 Lin.Ft.
 1-5/2 Con. 1.7 Cu.Yds.
 Reinf. Steel 47 Lbs.

Drawn by: Plummer Date: 1/27/33
 Checked by: Div'n Engr. Date: Sta. 145+25