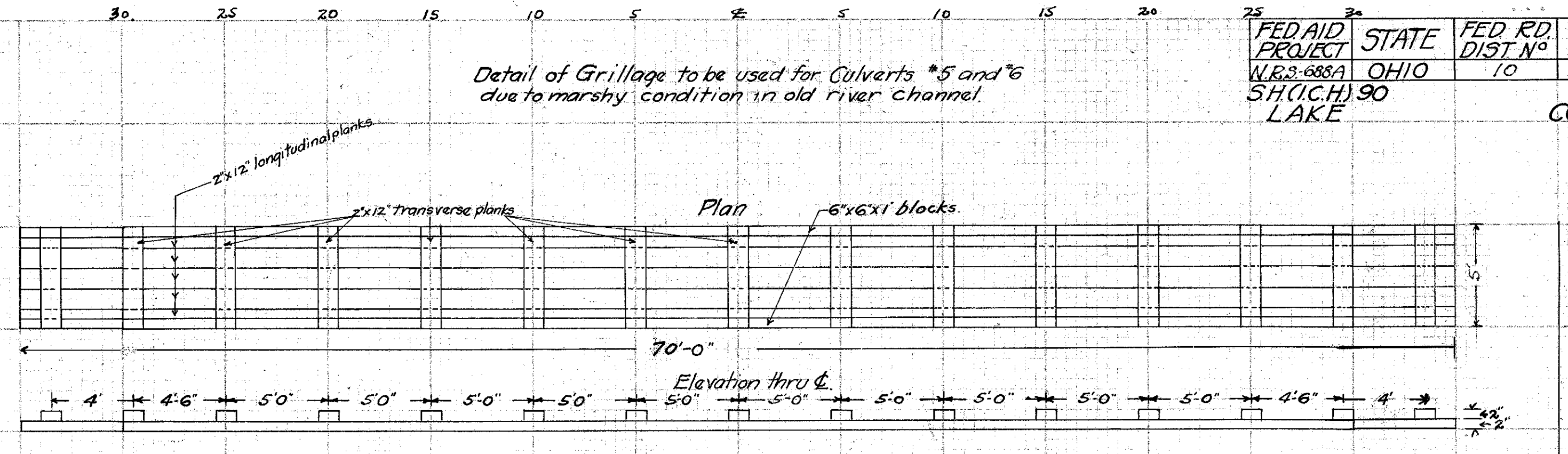


CULVERT DATA
 Type: Std. Roadway Culv. Dr. S-27 RC. 1+2
 Size: 36" x 40'
 Work Req: Remove pres. stone box + build 36" x 40" pipe culv. H.W. R+L. Open channel R+L
 Drawn by: Plummer + Beebe
 Date: 2-26-30

EST. QUANTITIES
 Exc. 36" Pipe 350 cu.yds.
 1-5/2" Con. 40 lin.ft.
 Reinf. Steel 4.8 cu.yds.
 Stone Masonry Removed 23 lbs.
 6 cu.yds.

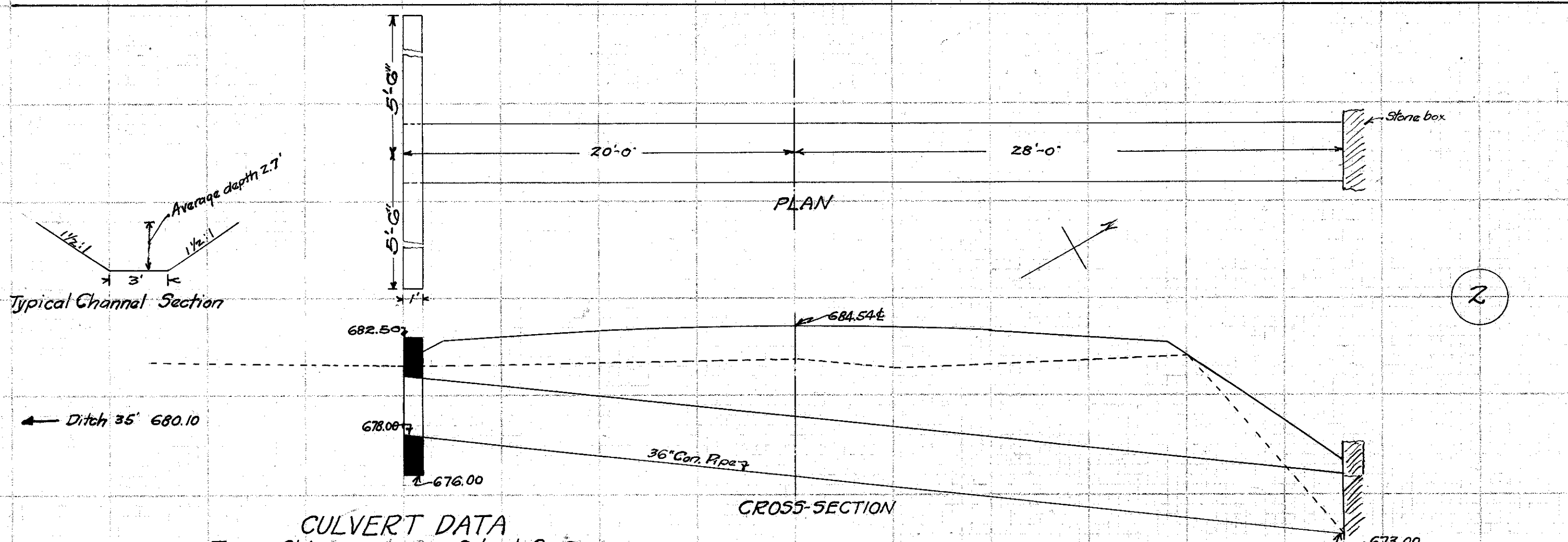
Checked by: D.W.L. Divn. Engr.
 Date: 3-5-30
 Sta. 27+50



Detail of Grillage to be used for Culverts #5 and #6 due to marshy condition in old river channel.

EST. QUANTITIES
 lumber 940 bd.ft.

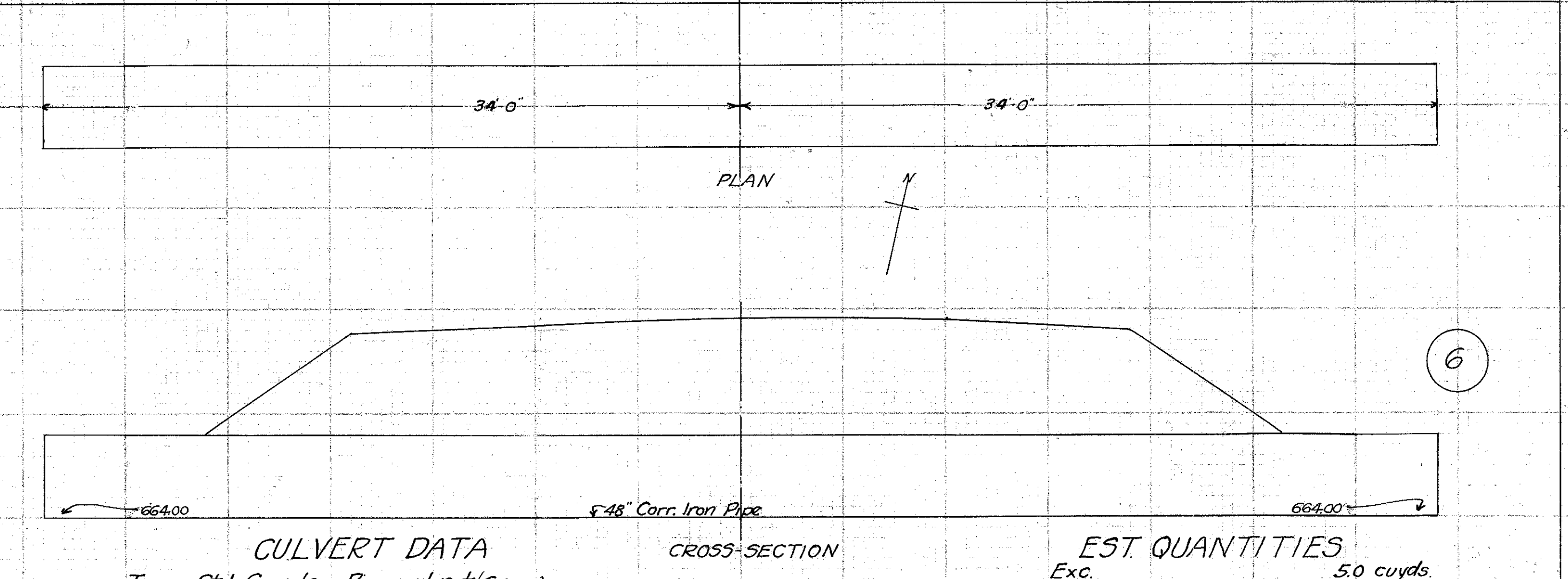
All timber to be oak or hardwood suitable to the Engineer.
 All timber to be "rough"
 All joints in longitudinal planks to be broken, and longitudinal planks, transverse planks and 6x6x1 blocks to be firmly spiked together.



CULVERT DATA
 Type: Std. Roadway Culvert Dr. S-27 RC. 1+2
 Size: 36" x 48'
 Work Req: Build 36" x 48" pipe culv. + connect into stone box 28' to R. H.W. on L. Open new channel to L.
 Drawn by: Plummer + Beebe
 Date: 2/26/30

EST. QUANTITIES
 Exc. 36" Pipe 35 cu.yds.
 1-5/2" Con. 48 lin.ft.
 Reinf. Steel 2.2 cu.yds.
 22 lbs.

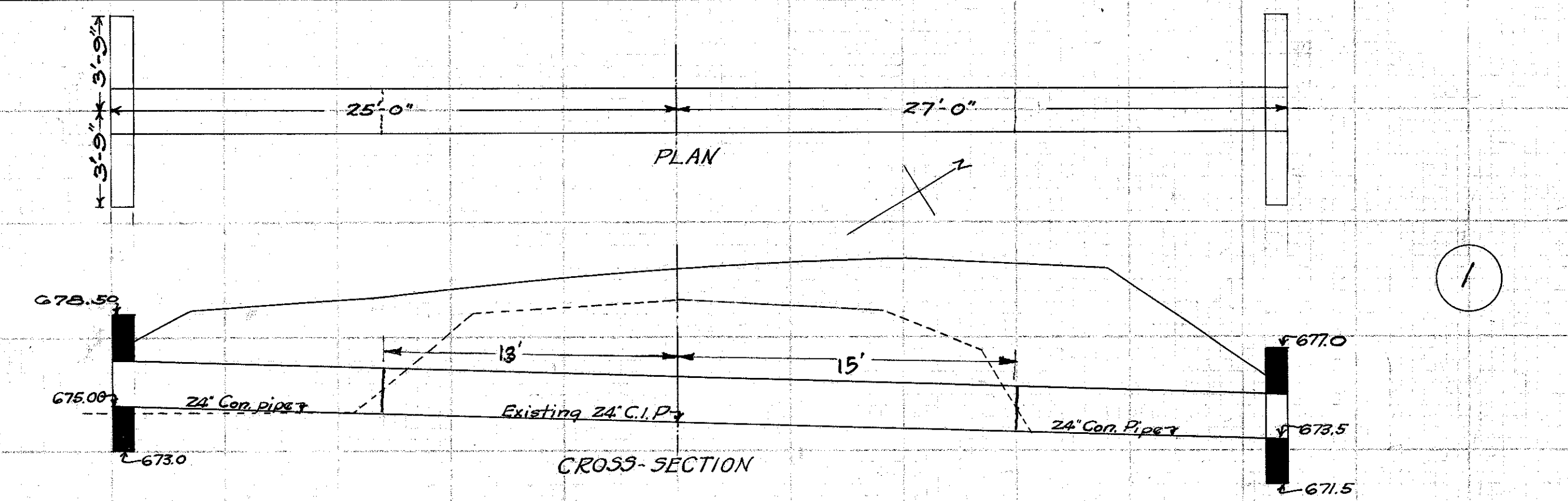
Checked by: D.W.L. Divn. Engr.
 Date: 3-5-30
 Sta. 6+83



CULVERT DATA
 Type: Std. Corr. Iron Pipe culvert (Spec.)
 Size: 48" x 68'
 Work Req: Lay 48" x 68" corr. I.P. culvert on grillage (see above)
 Drawn by: Plummer + Beebe
 Date: 2/27/30

EST. QUANTITIES
 Exc. 50 cu.yds.
 48" Corr. I.P. 68 lin.ft.
 This includes Grillage

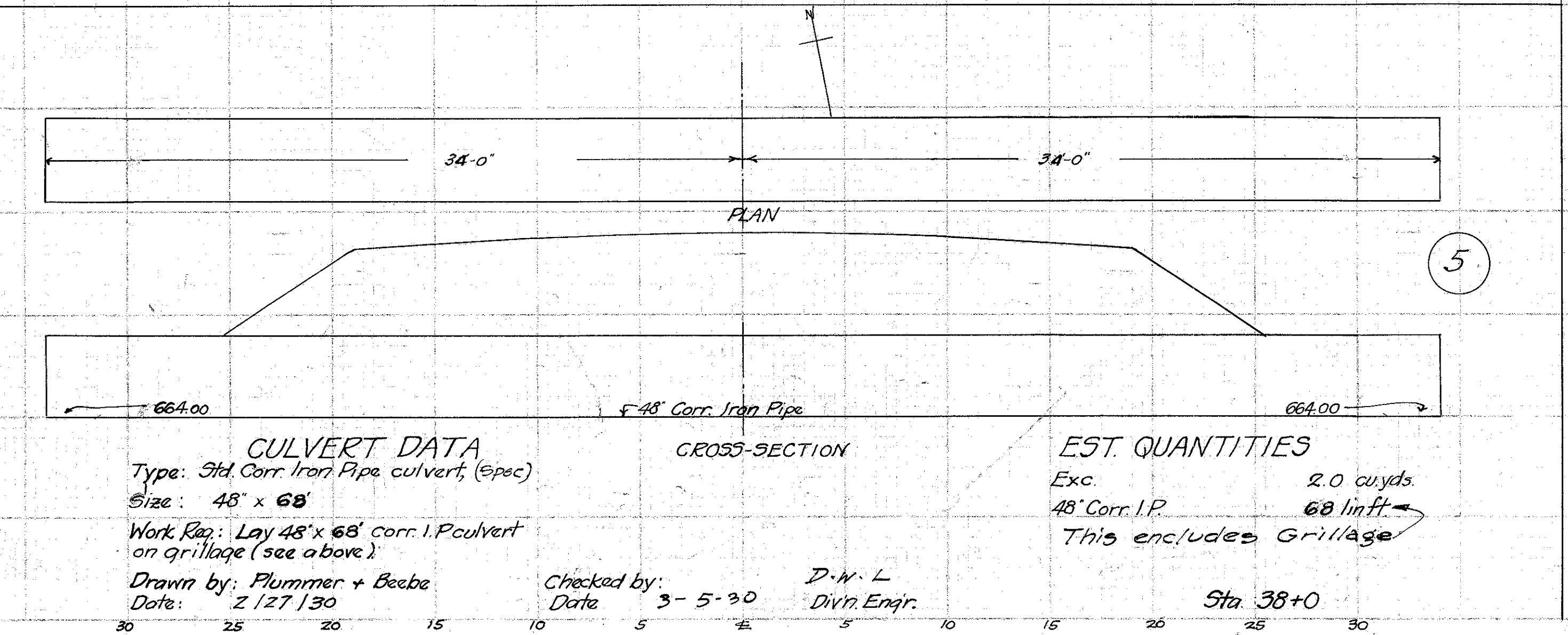
Checked by: D.W.L. Divn. Engr.
 Date: 3-5-30
 Sta. 46+10



CULVERT DATA
 Type: Std. Roadway Culvert extension Dr. S-27 RC. 1+2
 Size: 24" x 24'
 Work Req: Extend existing 24" C.I.P. 12' to L. and 12' to R. H.W. R+L.
 Drawn by: Plummer + Beebe
 Date: 2/26/30

EST. QUANTITIES
 Exc. 24" Pipe 40 cu.yds.
 1-5/2" Con. 24 lin.ft.
 Reinf. Steel 2.0 cu.yds.
 64 lbs.

Checked by: D.W.L. Divn. Engr.
 Date: 3-5-30
 Sta. 1+50



CULVERT DATA
 Type: Std. Corr. Iron Pipe culvert (Spec.)
 Size: 48" x 68'
 Work Req: Lay 48" x 68" corr. I.P. culvert on grillage (see above)
 Drawn by: Plummer + Beebe
 Date: 2/27/30

EST. QUANTITIES
 Exc. 20 cu.yds.
 48" Corr. I.P. 68 lin.ft.
 This includes Grillage

Checked by: D.W.L. Divn. Engr.
 Date: 3-5-30
 Sta. 38+0