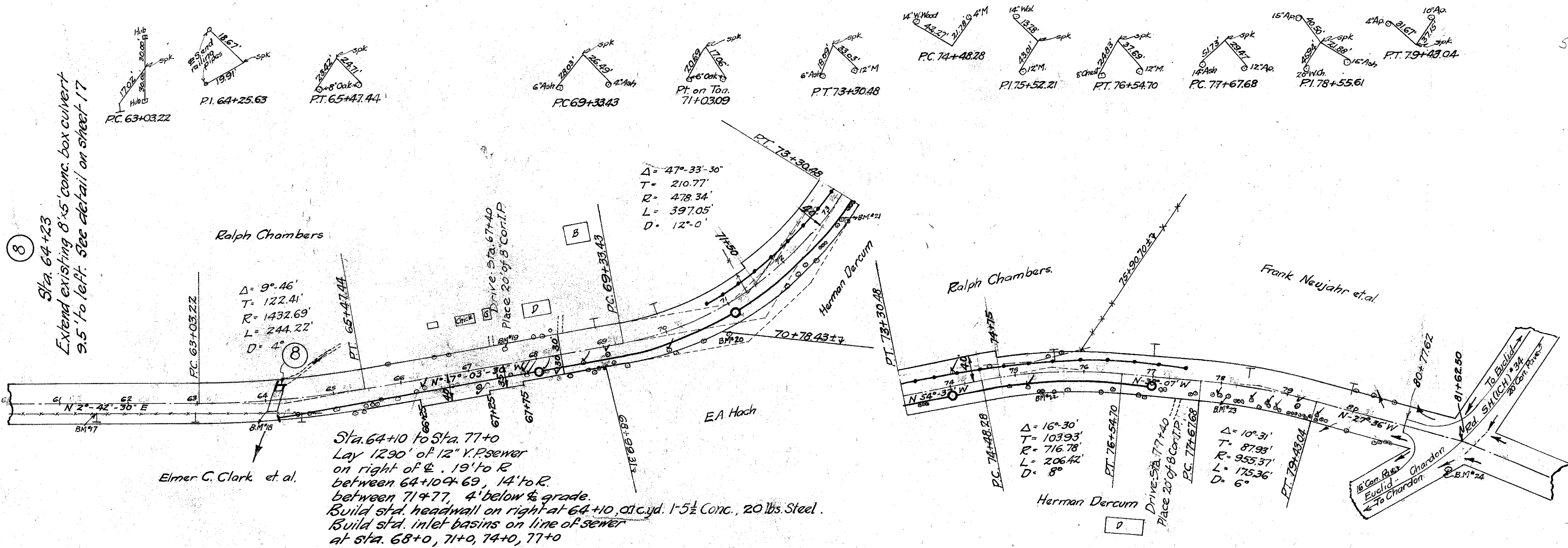


528033000(1.60)



Sta. 80+77.62 - Sta. 81+62.50
Deduct 188.6 Sq.Yds. Pavement for Existing conc. part. in good condition.

Type S-C Guard Rail
Sta. 70+70 to 77+50 on L, build 680'

Sta. 64+10 to Sta. 77+0
Lay 1290' of 12" V. Sewer on right of \pm . 19' to R. between 64+10 & 69, 14' to R. between 71 & 77, 4' below \pm grade. Build std. headwall on right at 64+10, c/c. yd. 1-5/2 Conc., 20 lbs. Steel. Build std. inlet basins on line of sewer at sta. 68+0, 71+0, 74+0, 77+0

See Curve tables on sheet 5A

BM.#17 Sta. 61+57
Spike front Tel. Pole.
17' R of \pm
Elevation 696.20

BM.#18 Sta. 64+12
"X" SE. Cor. E. Parapet
17' R of \pm .
Elevation 701.44

BM.#19 Sta. 67+63
Spike N. side 36" Maple
17.5' L of \pm
Elevation 717.11

BM.#20 Sta. 70+82
Spike rear 8" Oak
38' R of \pm
Elevation 739.42

BM.#21 Sta. 73+00
Spike front 8" Ash
20' R of \pm
Elevation 756.29

BM.#22 Sta. 75+49
Spike root 24" Walnut
20' L of \pm .
Elevation 778.72

BM.#23 Sta. 78+14
Spike root 18" Wild Cherry
18' R of \pm
Elevation 805.00

BM.#24 Sta. 81+60
Spike root 24" Elm
N.E. corner Intersection
Elevation 814.98

Grade Line shown is crown elevation of finished surface

