

LAKE COUNTY  
 CONCORD TOWNSHIP  
 TWP 10, RANGE 8  
 LOT 11 TRACT 3



0 10 20  
 HORIZONTAL  
 SCALE IN FEET

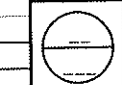
PID NO.  
**89046**

R/W DESIGNER  
 MPC  
 R/W REVIEWER  
 SAL

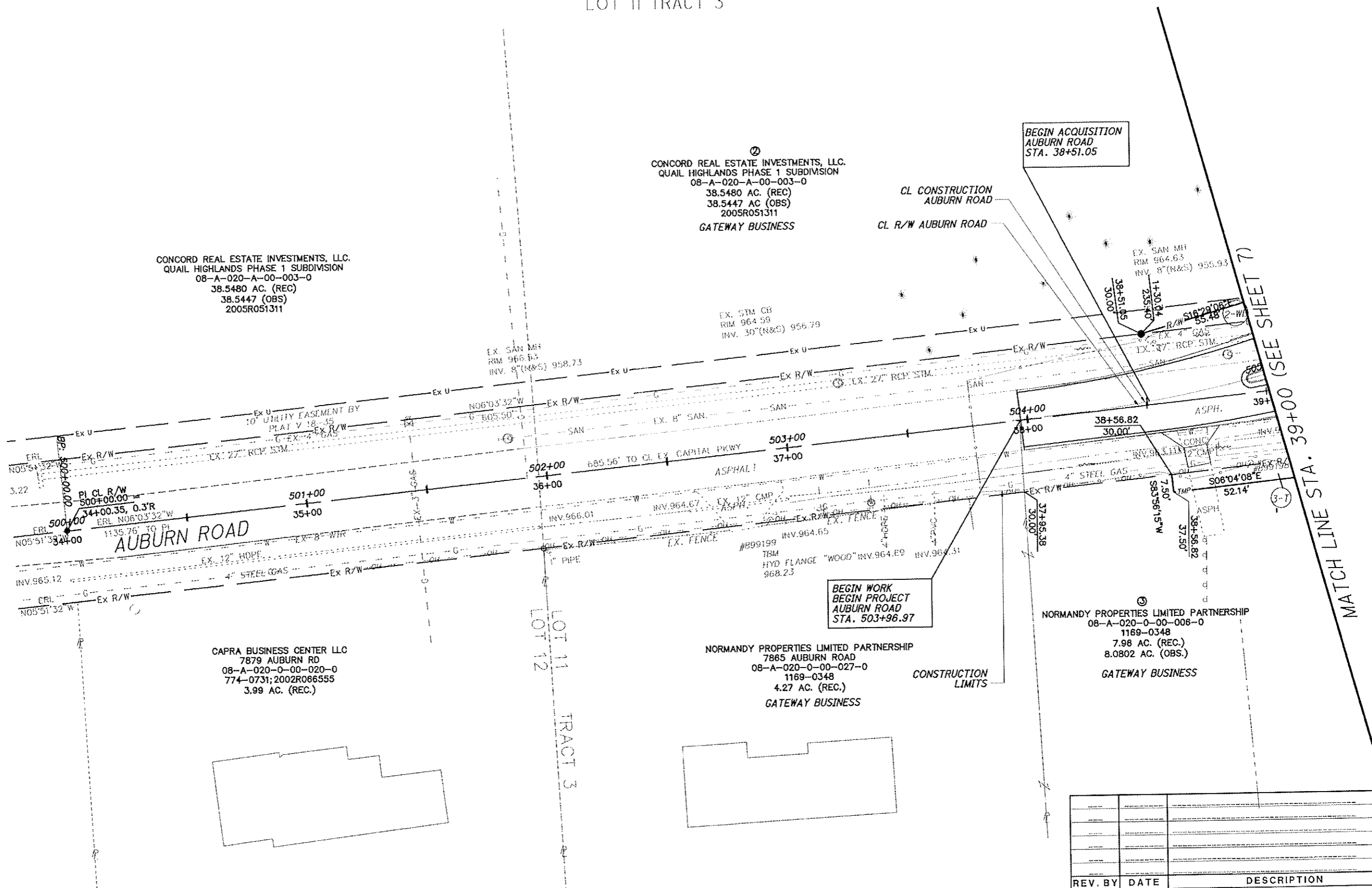
RIGHT OF WAY DETAIL SHEET  
 STA. 34+00 TO STA. 39+00

LAK Auburn-Crile  
 Connector Road

16 / 18



Z:\000T\_CADD\_DWG\LAKE\11111row\sheet\AUBURN 500+00 - 505+00.dgn 7/28/2014 11:01:19 PM mcyyas



CONCORD REAL ESTATE INVESTMENTS, LLC.  
 QUAIL HIGHLANDS PHASE 1 SUBDIVISION  
 08-A-020-A-00-003-0  
 38.5480 AC. (REC)  
 38.5447 (OBS)  
 2005R051311

CONCORD REAL ESTATE INVESTMENTS, LLC.  
 QUAIL HIGHLANDS PHASE 1 SUBDIVISION  
 08-A-020-A-00-003-0  
 38.5480 AC. (REC)  
 38.5447 AC. (OBS)  
 2005R051311  
 GATEWAY BUSINESS

BEGIN ACQUISITION  
 AUBURN ROAD  
 STA. 38+51.05

BEGIN WORK  
 BEGIN PROJECT  
 AUBURN ROAD  
 STA. 503+96.97

CAPRA BUSINESS CENTER LLC  
 7879 AUBURN RD  
 08-A-020-0-00-020-0  
 774-0731; 2002R086555  
 3.99 AC. (REC.)

NORMANDY PROPERTIES LIMITED PARTNERSHIP  
 7865 AUBURN ROAD  
 08-A-020-0-00-027-0  
 1169-0348  
 4.27 AC. (REC.)  
 GATEWAY BUSINESS

NORMANDY PROPERTIES LIMITED PARTNERSHIP  
 08-A-020-0-00-006-0  
 1169-0348  
 7.98 AC. (REC.)  
 8.0802 AC. (OBS.)  
 GATEWAY BUSINESS

REV. BY	DATE	DESCRIPTION

MATCH LINE STA. 39+00 (SEE SHEET 7)