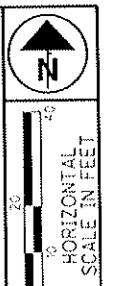


LAKE COUNTY
CONCORD TOWNSHIP
TWP 10, RANGE 8
LOT 11 TRACT 3



PID NO. **89046**

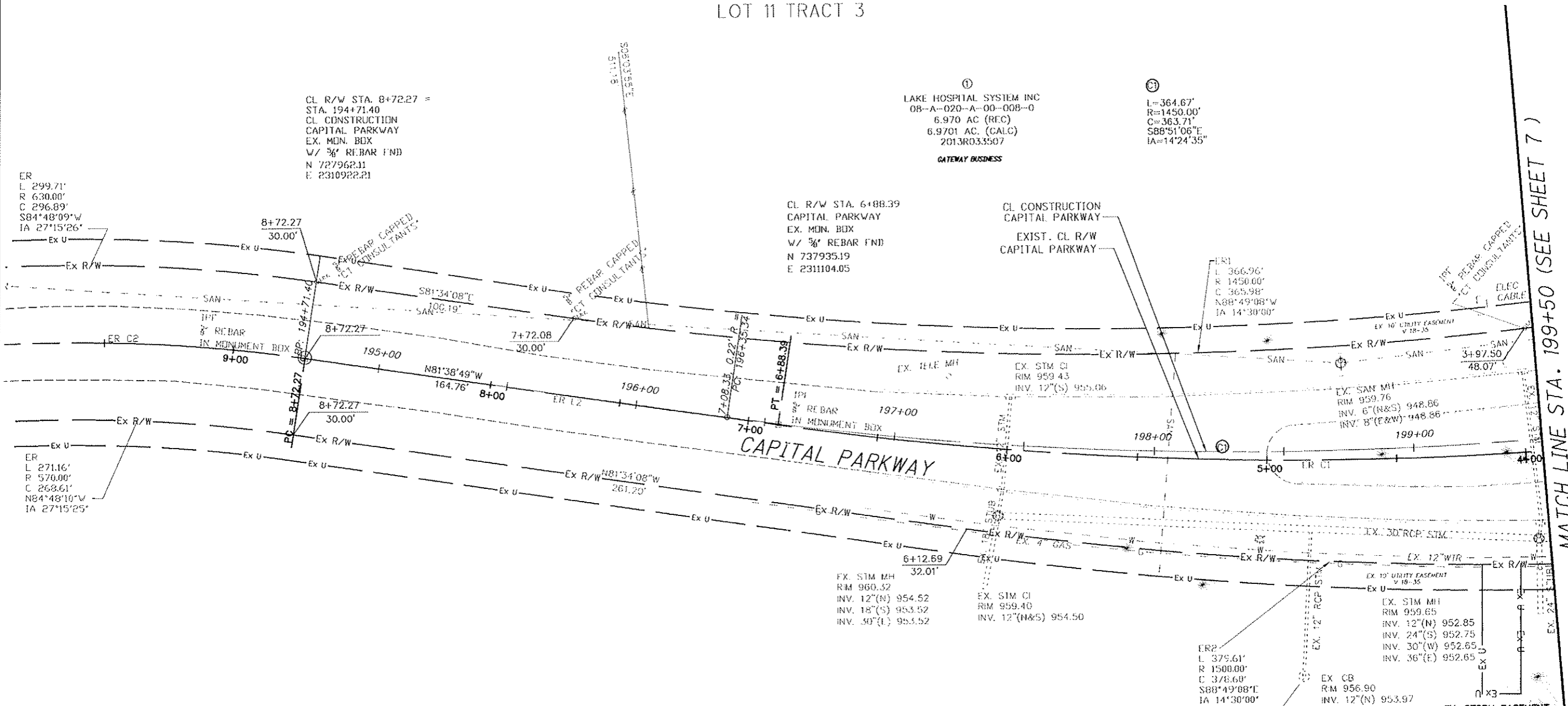
BY/DESIGNER: MPC
BY/REVIEWER: SAL

RIGHT OF WAY DETAIL SHEET
STA. 194+71.28 TO STA. 199+50

LAK Auburn-Crile
Connector Road

6 / 18

Z:\DDOT_CADD\DWGS\LAK\1111\Yow\Sheets\CAPITAL 194.71 - 199+50.dgn 7/28/2014 10:25:44 AM mcyvas



CL R/W STA. 8+72.27 =
STA. 194+71.40
CL CONSTRUCTION
CAPITAL PARKWAY
EX. MON. BOX
W/ 3/8" REBAR FND
N 72°79'62.11
E 231°09'22.21

LAKE HOSPITAL SYSTEM INC
08-A-020-A-00-008-0
6.970 AC (REC)
6.9701 AC. (CALC)
2013R033507
GATEWAY BUSINESS

L=364.67'
R=1450.00'
C=363.71'
S88°51'06"E
IA=14°24'35"

CL R/W STA. 6+88.39
CAPITAL PARKWAY
EX. MON. BOX
W/ 3/8" REBAR FND
N 73°79'35.19
E 231°11'04.05

CL CONSTRUCTION
CAPITAL PARKWAY
EXIST. CL R/W
CAPITAL PARKWAY

EXISTING CENTERLINE RIGHT OF WAY
LINE AND CURVE DATA - CAPITAL PARKWAY

LINE TABLE		
LINE	LENGTH	BEARING
ER L2	183.88	N81°34'08"W

CURVE TABLE					
CURVE	LENGTH	RADIUS	CHORD		DELTA
			BEARING	DISTANCE	
ER C1	366.96	1450.00	S88°49'08"E	365.98	14°30'00"
ER C2	285.43	600.00	S84°48'09"W	282.75	27°15'25"

CONCORD REAL ESTATE INVESTMENTS, LLC.
QUAIL HIGHLANDS PHASE 1 SUBDIVISION
08-A-020-A-00-003-0
38.5480 AC. (REC)
38.5447 AC (OBS)
2005R051311

REV. BY	DATE	DESCRIPTION