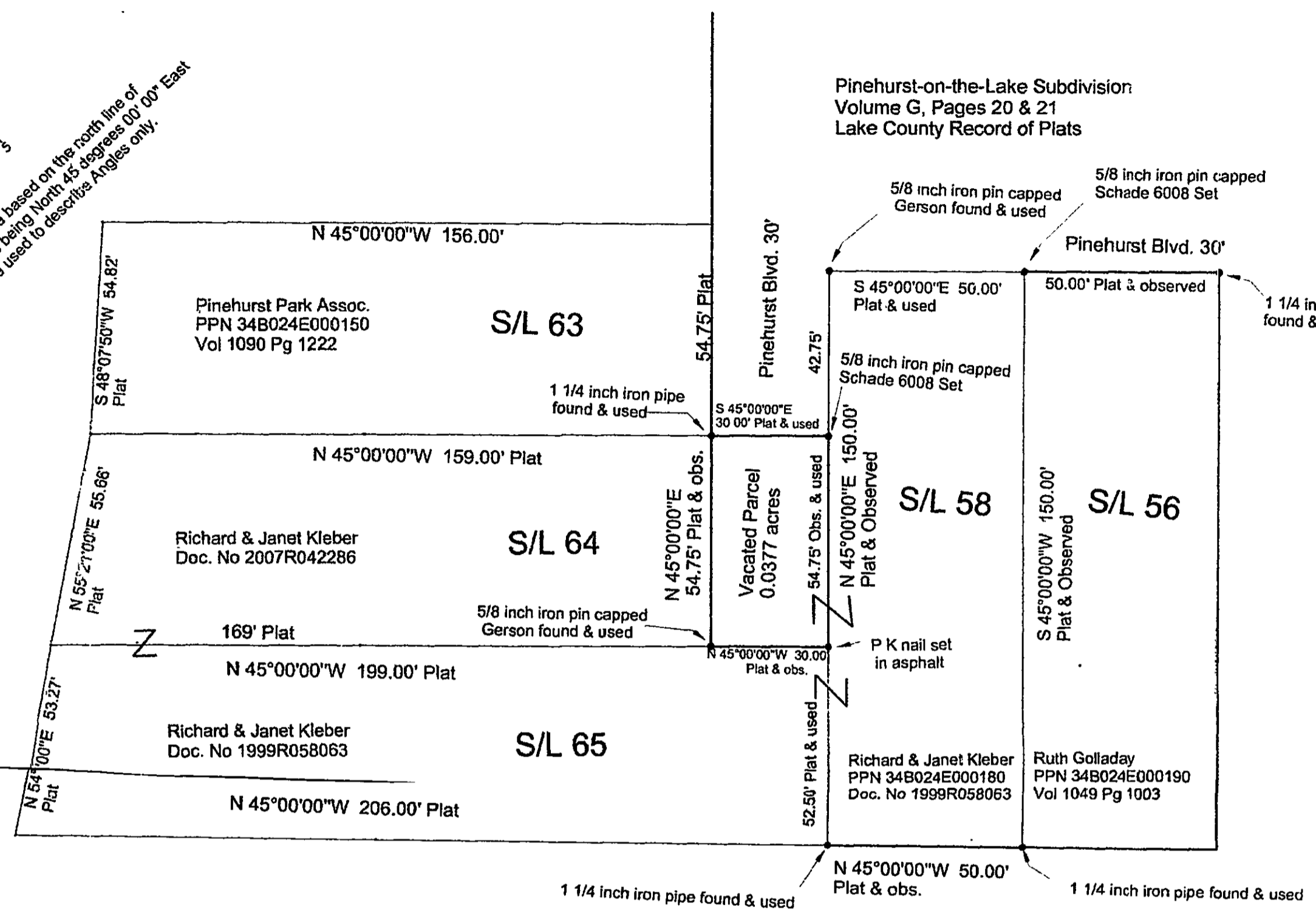


Scale in Feet  
1" = 30'

Bearings are based on the north line of Sublot 58 being North 45 degrees 00' 00" East and are used to describe Angles only.



Pinehurst-on-the-Lake Subdivision  
Volume G, Pages 20 & 21  
Lake County Record of Plats

Waterview Estate Subdivision  
Volume X, Page 38  
Lake County Record of Plats

### Vacation Plat

FOR  
PART OF PINEHURST BOULEVARD (30 FEET WIDE) AS  
RECORDED IN PINEHURST - ON - THE - LAKE  
SUBDIVISION AS SHOWN BY PLAT RECORDED IN  
VOLUME G, PAGES 20 & 21 OF LAKE COUNTY PLAT  
RECORDS IN LOT 16, GORE TRACT, WILLOUGHBY  
TOWNSHIP, NOW IN THE CITY OF EASTLAKE, LAKE  
COUNTY, OHIO.

DIMENSIONS SHOWN ON THIS PLAT ARE EXPRESSED IN FEET AND DECIMAL  
PARTS THEREOF. PERMANENT MONUMENTS WERE FOUND OR SET AT ALL  
POINTS INDICATED HEREON, ALL OF WHICH I CERTIFY TO BE CORRECT.

SCHADE SURVEYING COMPANY

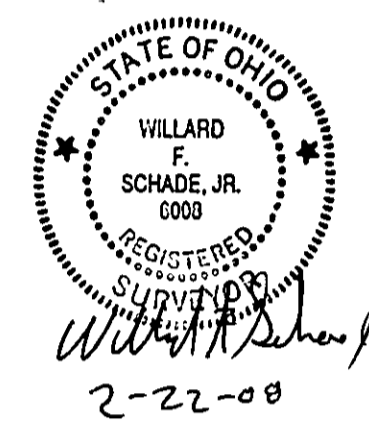
*Willard F. Schade Jr.*  
Willard F. Schade Jr. Professional Surveyor 6008,

#### Approvals

APPROVED THIS \_\_\_\_\_ DAY OF \_\_\_\_\_, 2008  
BY THE CITY OF EASTLAKE LAW DIRECTOR

APPROVED THIS \_\_\_\_\_ DAY OF \_\_\_\_\_, 2008  
BY THE CITY OF EASTLAKE ENGINEER

APPROVED THIS \_\_\_\_\_ DAY OF \_\_\_\_\_, 2008  
BY THE CITY OF EASTLAKE PLANNING COMMISSION



VACATION  
THE UNDERSIGNED, CITY OF EASTLAKE BEING THE OWNER OF THE LAND  
TO BE VACATED AND TRANSFERRED AS SHOWN TO RICHARD J. & JANET L.  
KLEBER AS SHOWN AND ORDAINED BY EASTLAKE CITY ORDINANCE NO.

THIS PLAT APPROVED BY EASTLAKE CITY COUNCIL THIS \_\_\_\_\_ DAY OF \_\_\_\_\_, 2007

CLERK OF COUNCIL \_\_\_\_\_ DATE \_\_\_\_\_

SCHADE SURVEYING COMPANY 4043 Erie Street Willoughby, Ohio 44094 440-951-6454		
SCALE: 1" = 30'	APPROVED BY	DRAWN BY WFS
DATE: 2-18-08		FB 126
Vacation Plat for R. & J. Kleber 38 Pinehurst Boulevard Eastlake, Ohio		
		DRAWING NUMBER 08-1866