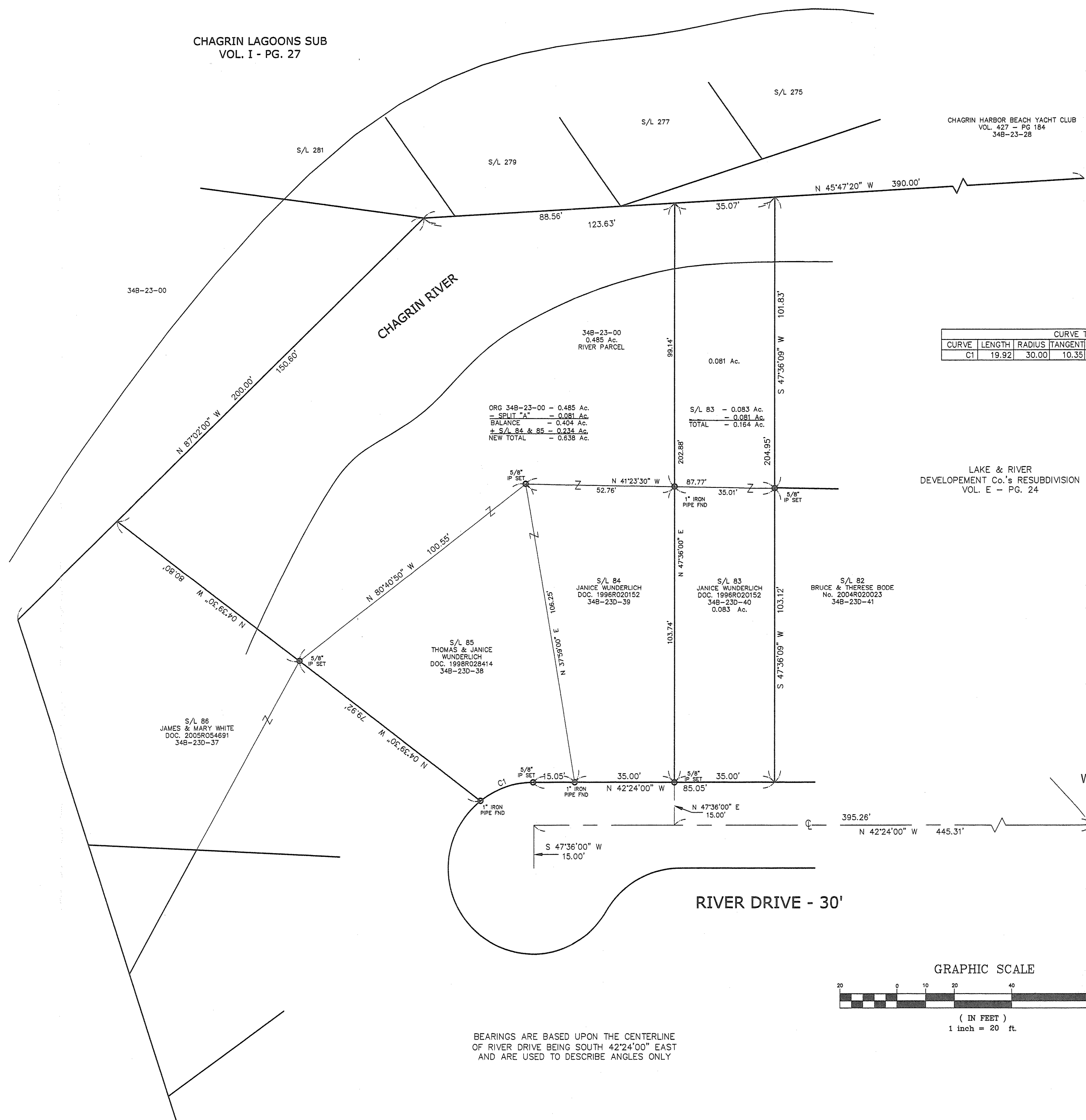
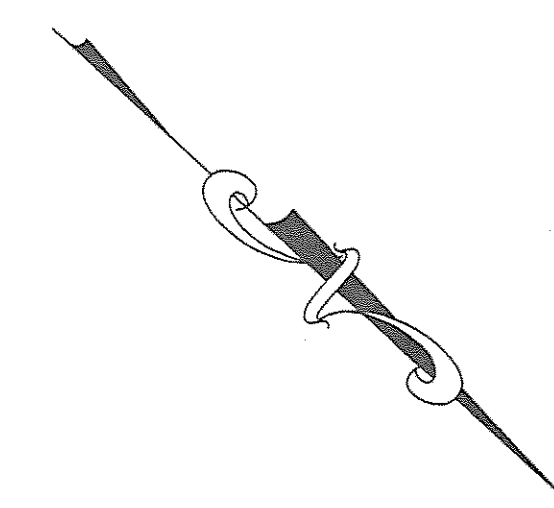


CHAGRIN LAGOONS SUB
VOL. I - PG. 27

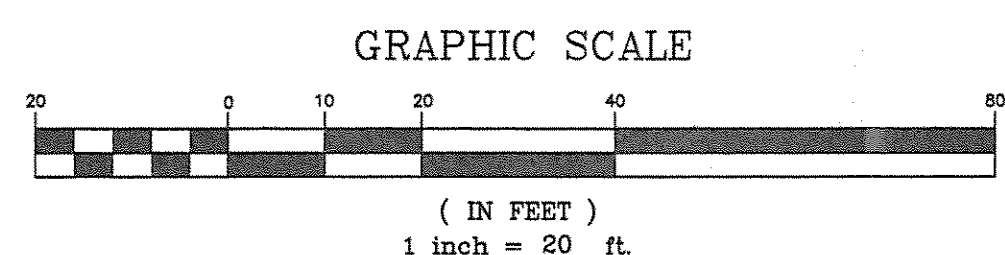


CURVE TABLE					
CURVE	LENGTH	RADIUS	TANGENT	CHORD	DELTA
C1	19.92	30.00	10.35	19.56	S61°56'31"E 38°03'08"

ORG 34B-23-00 = 0.485 Ac.
 = SPLIT "A" = 0.081 Ac.
 BALANCE = 0.404 Ac.
 + S/L 84 & 85 = 0.234 Ac.
 NEW TOTAL = 0.638 Ac.

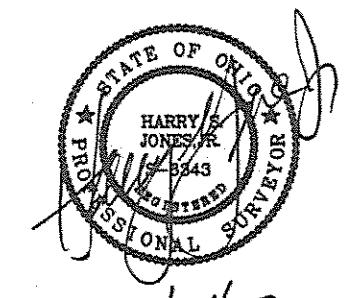
S/L 83 = 0.083 Ac.
 TOTAL = 0.081 Ac.
 = 0.164 Ac.

LAKE & RIVER
 DEVELOPEMENT Co.'s RESUBDIVISION
 VOL. E - PG. 24



BEARINGS ARE BASED UPON THE CENTERLINE
 OF RIVER DRIVE BEING SOUTH 42°24'00" EAST
 AND ARE USED TO DESCRIBE ANGLES ONLY

EXISTING UTILITIES NOTE:
 THE SIZE AND LOCATION, BOTH HORIZONTAL AND VERTICAL
 OF THE UNDERGROUND UTILITIES SHOWN HEREON, HAVE BEEN
 OBTAINED BY A SEARCH OF AVAILABLE RECORDS.
 VERIFICATION BY FIELD OBSERVATION HAS BEEN CONDUCTED
 WHERE PRACTICAL. HOWEVER, BABCOCK, JONES AND ASSOCIATES
 INC. DOES NOT GUARANTEE THE COMPLETENESS NOR ACCURACY
 THEREOF.



REV. NO.	DESCRIPTION	DATE	BY	CHK'D
1	Revised per L.C. Engineer	1-24-07	HJ	HT

bj BABCOCK, JONES AND ASSOCIATES, INC
 CIVIL ENGINEERS - SURVEYORS - LAND PLANNERS
 PAINESVILLE OHIO 44077

DATE	1/11/07
DESIGN BY	H.J.
DRAWN BY	B.P.
APPROVED BY	H.J.
CREW CHIEF	

CONSOLIDATION PLAT
 FOR
 THOMAS WUNDERLICH
 LOT No. 21 - GORE TRACT
 S/L 83,84,85 RIVER DRIVE (CHAGRIN HARBOR BEACH SUB (E-1))
 CITY OF EASTLAKE LAKE COUNTY STATE OF OHIO

SCALE	1" = 20'
JOB NO	04-031-LS
SHEET	OF
1	1