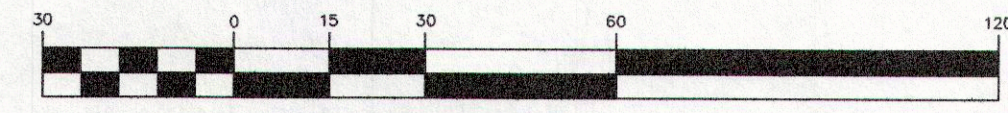


**LOT SPLIT OF PP#34B-021A-00-001-0**  
AS CONVEYED TO DONALD P. MOYER BY DOC. No. 960035596  
SITUATED IN PART OF LOT No. 3 IN THE GORE, IN ORIGINAL WILLOUGHBY TOWNSHIP  
CITY OF EASTLAKE, LAKE COUNTY AND STATE OF OHIO

GRAPHIC SCALE



( IN FEET )  
1 inch = 30 ft.

Bearings are to an assumed  
meridian and are used to denote  
angles only.

DANIEL A. KERNISKEY, TRUSTEE  
PP#34B-021B-00-008-0  
DOC. No. 1997R044236

WILLIAM T. AND DEBRA J. FAUNCE  
PP#34B-021A-00-002-0  
DOC. No. 2010R022862

DANIEL A. KERNISKEY, TRUSTEE  
PP#34B-021B-00-020-0  
DOC. No. 1997R044236

DONALD P. MOYER  
PP#34B-021A-00-001-0 (PARCEL 1)  
DOCUMENT No. 960035596  
VOL. 874, PAGE 915

KENNETH M. AND FAY G. SWOPE  
PP#34B-021B-00-009-0  
DOC. No. 2001R043273

KENNETH M. AND FAY G. SWOPE  
PP#34B-021B-00-010-0  
DOC. No. 2001R043272

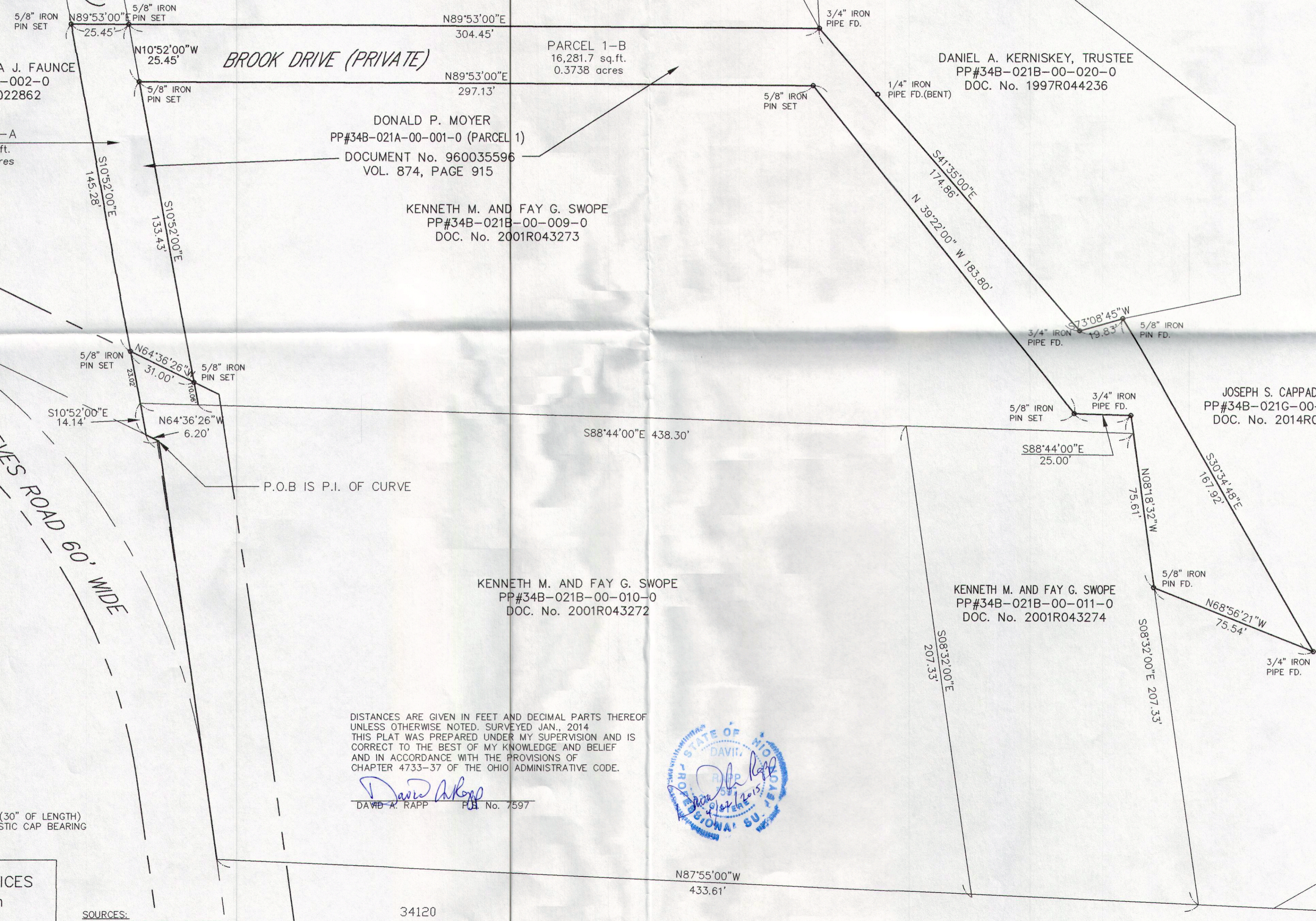
KENNETH M. AND FAY G. SWOPE  
PP#34B-021B-00-011-0  
DOC. No. 2001R043274

JOSEPH S. CAPPADONNA  
PP#34B-021G-00-012-0  
DOC. No. 2014R025761

BROOK DRIVE (PRIVATE)

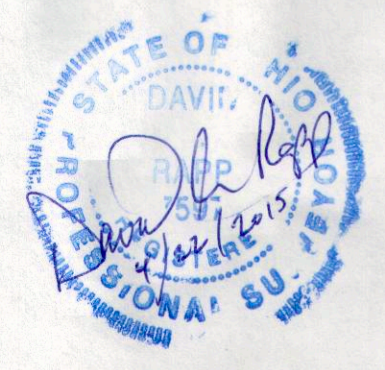
BROOK DRIVE (PRIVATE)

REEVES ROAD 60' WIDE



DISTANCES ARE GIVEN IN FEET AND DECIMAL PARTS THEREOF  
UNLESS OTHERWISE NOTED. SURVEYED JAN., 2014  
THIS PLAT WAS PREPARED UNDER MY SUPERVISION AND IS  
CORRECT TO THE BEST OF MY KNOWLEDGE AND BELIEF  
AND IN ACCORDANCE WITH THE PROVISIONS OF  
CHAPTER 4733-37 OF THE OHIO ADMINISTRATIVE CODE.

*David A. Rapp*  
DAVID A. RAPP PLS No. 7597



ALL IRON PINS SET ARE 5/8" (30" OF LENGTH)  
AND ARE IDENTIFIED BY A PLASTIC CAP BEARING  
THE IMPRINT "7597".

DAVID RAPP SERVICES  
dave@usaeq.com  
(440) 983-1607

SOURCES:  
DEEDS AND PLATS AS NOTED