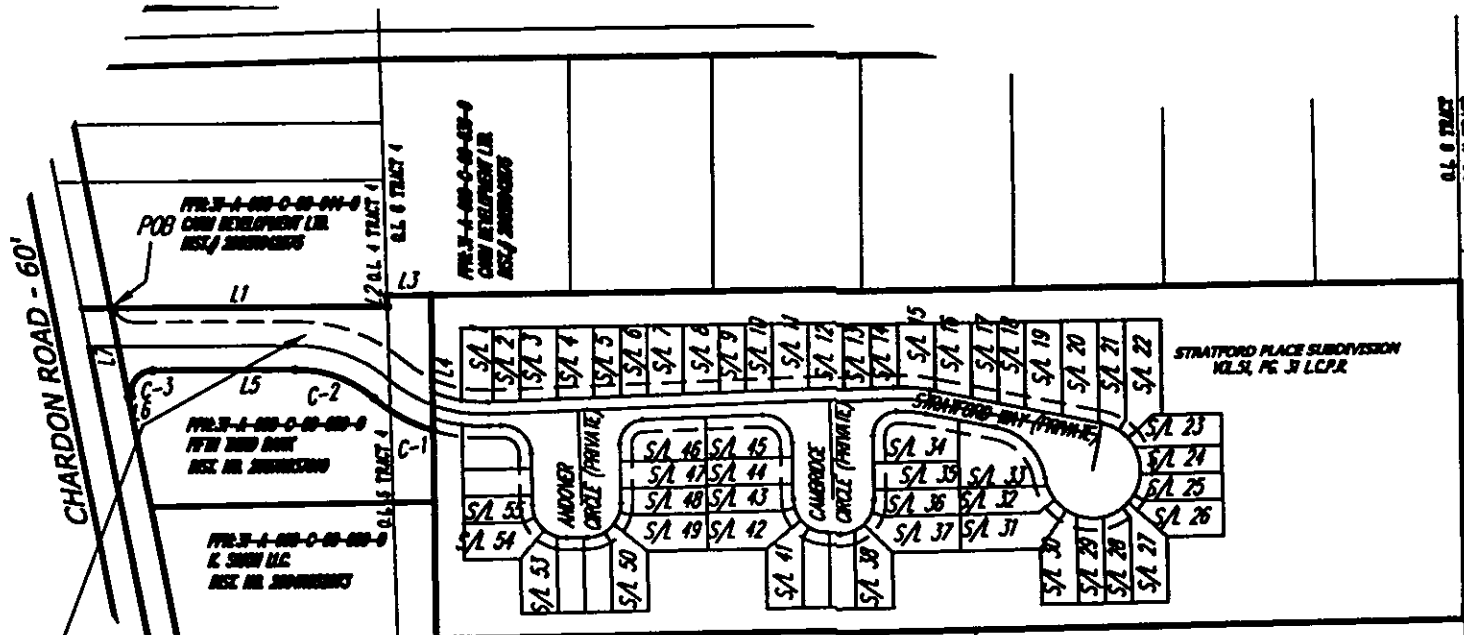


CURVE TABLE						
CURVE	LENGTH	RADIUS	TANGENT	CHORD	BEARING	DELTA
C1	70.88	175.00	35.93	70.40	N29°09'54"E	237°25"
C2	88.86	125.00	46.40	87.00	N20°24'09"E	40°43'35"
C3	39.60	22.50	27.22	34.68	N50°22'57"W	100°50'16"

LANDS IN THE NAME OF:
 K. SIMON LLC
 P.P.N. 31-A-008-C-00-053-0
 INST. NO. 2004R052073

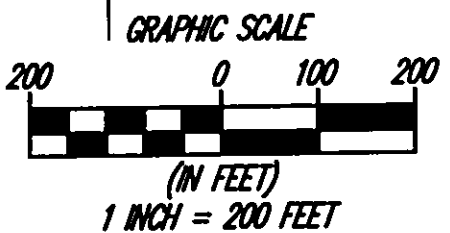
● = 5/8" IRON PIN SET



K. SIMON LLC
 P.P.N. 31-A-008-C-00-053-0
 INST. NO. 2004R052073
 0.5971 ACRES
 26,010 SQ. FT.

WINCHESTER HILLS DRIVE - 60'
 VOL. "O", PG. 15 L.C.P.R.

LINE TABLE		
LINE	LENGTH	BEARING
L1	209.56	S00°02'11"W
L2	11.24	N88°28'41"E
L3	45.67	S00°19'48"E
L4	141.09	S89°19'37"W
L5	149.59	N00°02'11"E
L6	3.60	N117°04"W
L7	94.25	N78°46'56"E



Mich P. Spellacy 6/11/09

SKETCH TO ACCOMPANY
 LEGAL DESCRIPTION



POLARIS ENGINEERING &
 SURVEYING
 14600 CHARDON ROAD - SUITE D
 WILLOUGHBY HILLS, OHIO 44094
 (440) 944-4433 (440) 944-3722 (Fax)
 www.polaris-es.com

PREPARED FOR:
 K. Simon LLC

CONTRACT No.	04-611
SHEET	1