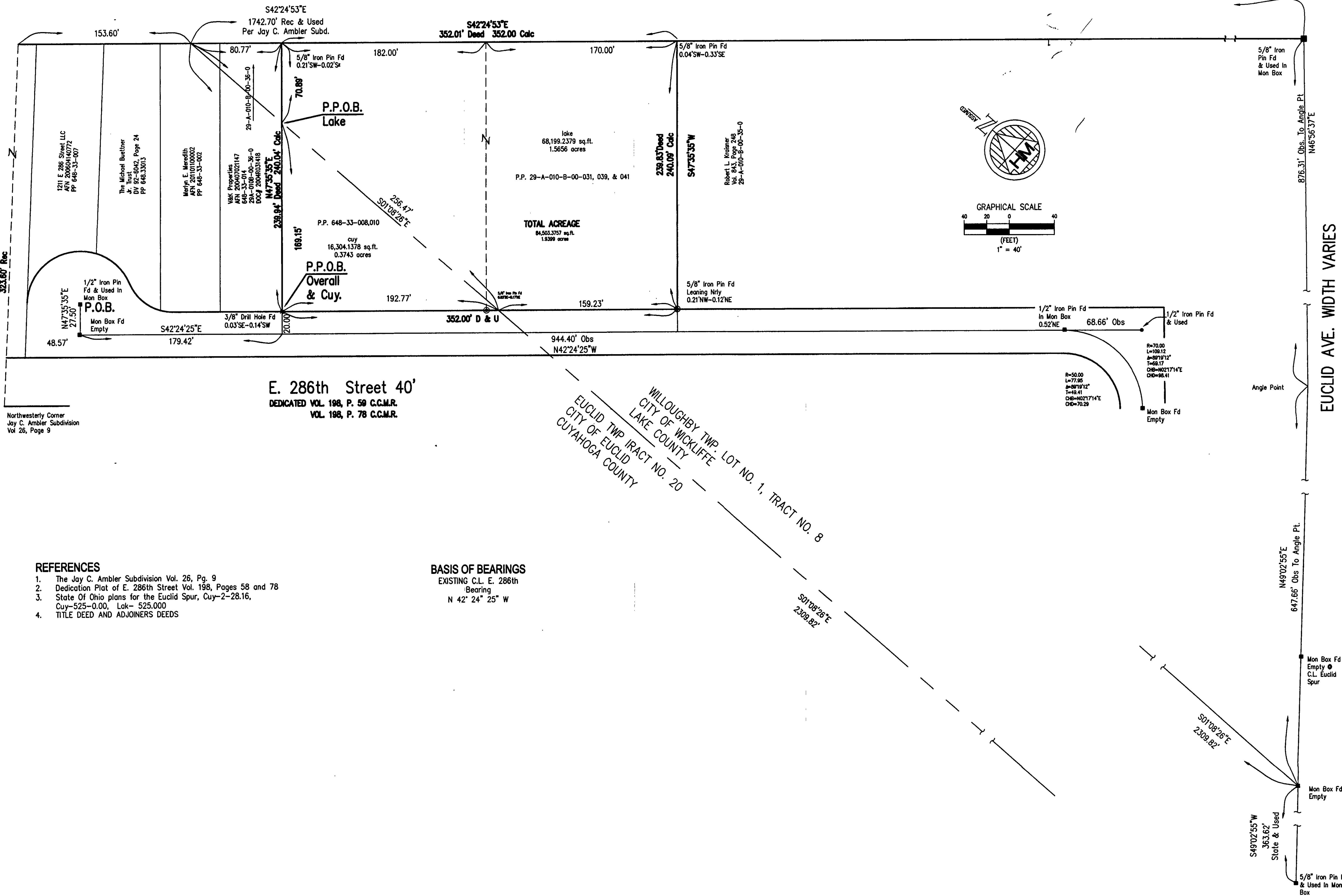


THE CRANE SUBDIVISION  
VOL. "C", PG. 10 L.C.M.R.

NEW YORK, CHICAGO & ST. LOUIS RAILROAD



E. 286th Street 40'  
DEDICATED VOL. 198, P. 59 C.C.M.R.  
VOL. 198, P. 78 C.C.M.R.

REFERENCES

1. The Jay C. Ambler Subdivision Vol. 26, Pg. 9
2. Dedication Plat of E. 286th Street Vol. 198, Pages 58 and 78
3. State Of Ohio plans for the Euclid Spur, Cuy-2-28.16, Cuy-525-0.00, Lak- 525.000
4. TITLE DEED AND ADJOINERS DEEDS

BASIS OF BEARINGS

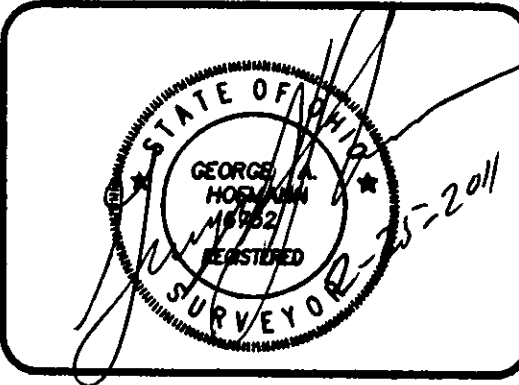
EXISTING C.L. E. 286th  
Bearing  
N 42° 24' 25" W

Boundary Survey

MADE AT THE INSTANCE OF FRANK GROH-WARGO ATTORNEY  
ORIGINAL EUCLID TWP. TRACT 20  
NOW IN THE CITY OF EUCLID, COUNTY OF CUYAHOGA, OHIO  
ORIGINAL WILLOUGHBY TWP. LOT 1, TRACT 8  
NOW IN THE CITY OF WICKLIFFE, COUNTY OF LAKE, OHIO

EUCLID AVE. WIDTH VARIES

HOFMANN-METZKER, INC.  
REGISTERED PROFESSIONAL SURVEYORS  
24 BEECH ST - P.O. BOX 343  
BEREA, OHIO 44017  
440-234-7350 FAX 440-234-7351  
GEORGE HOFMANN E-MAIL  
george\_hm@ameritech.net



1	Rev per Lake County	2- 25- 2011
2		
3		
4		
5		
6		

geo\groh-wargo\  
E. 286th.dwg  
ORDER NO. 10-108  
F.B. 814, P 71  
Jan 24, 2011

C-1A