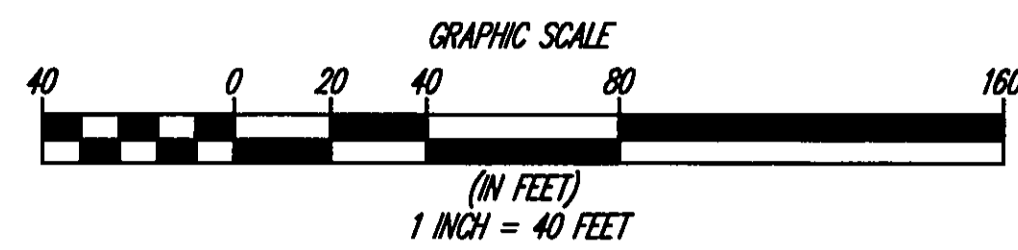
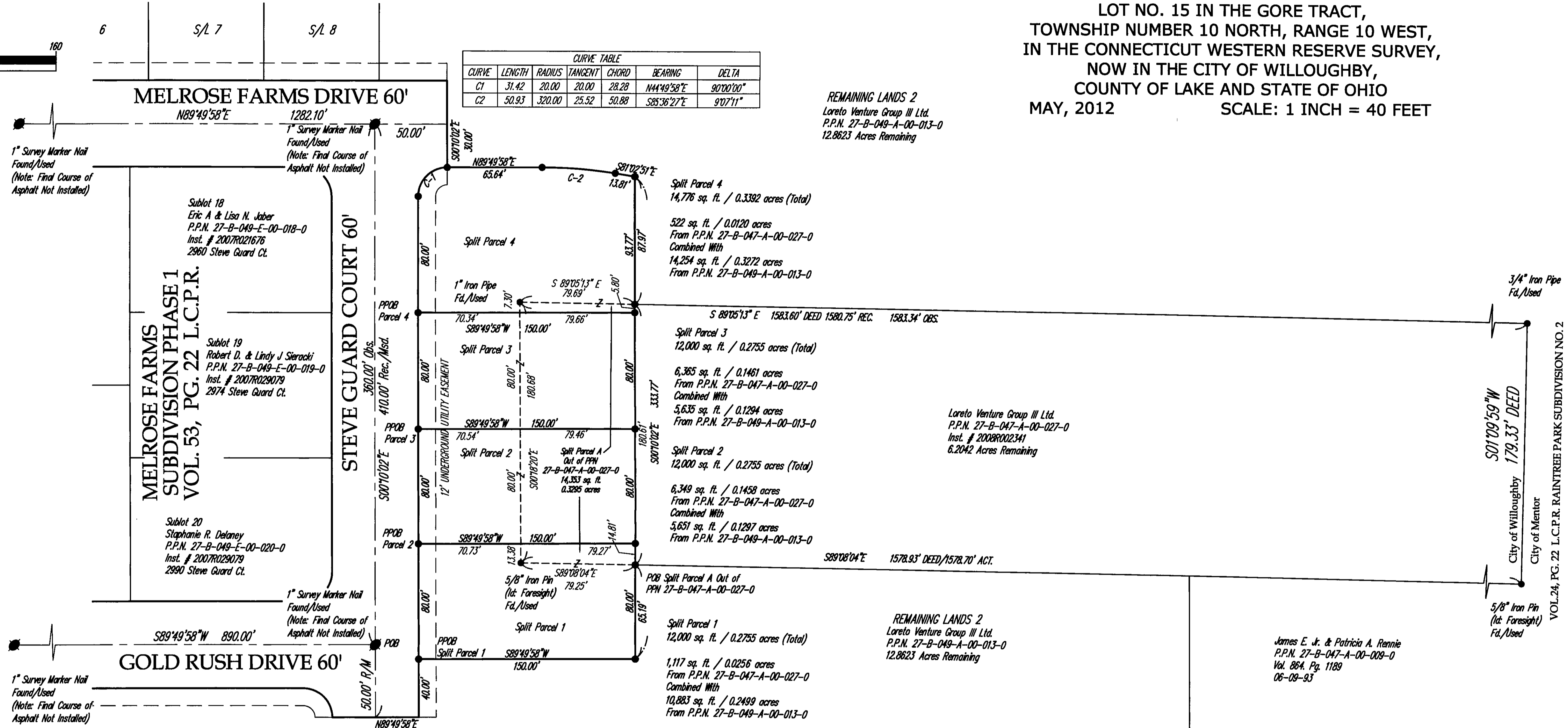


PLAT OF LOT SPLIT AND CONSOLIDATION
 BEING A PART OF ORIGINAL WILLOUGHBY TOWNSHIP
 LOT NO. 15 IN THE GORE TRACT,
 TOWNSHIP NUMBER 10 NORTH, RANGE 10 WEST,
 IN THE CONNECTICUT WESTERN RESERVE SURVEY,
 NOW IN THE CITY OF WILLOUGHBY,
 COUNTY OF LAKE AND STATE OF OHIO
 MAY, 2012
 SCALE: 1 INCH = 40 FEET



CURVE TABLE						
CURVE	LENGTH	RADIUS	TANGENT	CHORD	BEARING	DELTA
C1	31.42	20.00	20.00	28.28	N44°49'58"E	90°00'00"
C2	50.93	320.00	25.52	50.88	S85°36'27"E	90°7'11"

REMAINING LANDS 2
 Loreto Venture Group III Ltd.
 P.P.N. 27-B-049-A-00-013-0
 12.8623 Acres Remaining



BEARINGS SHOWN HEREON ARE BASED ON THE OHIO COORDINATE SYSTEM OF 1983 - NORTH ZONE, 1986 ADJUSTMENT.

Sublot 18
 Eric A & Lisa N. Jaber
 P.P.N. 27-B-049-E-00-018-0
 Inst. # 2007R021676
 2960 Steve Guard Ct.

Sublot 19
 Robert D. & Lindy J Sieracki
 P.P.N. 27-B-049-E-00-019-0
 Inst. # 2007R029079
 2974 Steve Guard Ct.

Sublot 20
 Stephanie R. Delaney
 P.P.N. 27-B-049-E-00-020-0
 Inst. # 2007R029079
 2990 Steve Guard Ct.

Split Parcel 4
 14,776 sq. ft. / 0.3392 acres (Total)
 522 sq. ft. / 0.0120 acres
 From P.P.N. 27-B-047-A-00-027-0
 Combined With
 14,254 sq. ft. / 0.3272 acres
 From P.P.N. 27-B-049-A-00-013-0

Split Parcel 3
 12,000 sq. ft. / 0.2755 acres (Total)
 6,365 sq. ft. / 0.1461 acres
 From P.P.N. 27-B-047-A-00-027-0
 Combined With
 5,635 sq. ft. / 0.1294 acres
 From P.P.N. 27-B-049-A-00-013-0

Split Parcel 2
 12,000 sq. ft. / 0.2755 acres (Total)
 6,349 sq. ft. / 0.1458 acres
 From P.P.N. 27-B-047-A-00-027-0
 Combined With
 5,651 sq. ft. / 0.1297 acres
 From P.P.N. 27-B-049-A-00-013-0

Split Parcel 1
 12,000 sq. ft. / 0.2755 acres (Total)
 1,117 sq. ft. / 0.0256 acres
 From P.P.N. 27-B-047-A-00-027-0
 Combined With
 10,883 sq. ft. / 0.2499 acres
 From P.P.N. 27-B-049-A-00-013-0

Loreto Venture Group III Ltd.
 P.P.N. 27-B-047-A-00-027-0
 Inst. # 2008R002341
 6.2042 Acres Remaining

REMAINING LANDS 2
 Loreto Venture Group III Ltd.
 P.P.N. 27-B-049-A-00-013-0
 12.8623 Acres Remaining

James E. Jr. & Patricia A. Rennie
 P.P.N. 27-B-047-A-00-009-0
 Vol. 864, Pg. 1189
 06-09-93

BOUNDARY SURVEY LEGEND

5/8" Iron Pin Set	●	A, Act. Actual Measurement or Calculation
Iron Pin/Pipe Found	●	U, Used Used Measurement or Monument
Mon Box Found With Pin/Pipe	■	M, Msd. Measured
Monument Box Found (Empty)	■	D, R., Rec. Deed or Record
Survey Nail Set	▲	Calc. Calculated
Survey Nail Found	▲	C/L Centerline
Stone/Concrete Monument Found	⊙	O, Obs. Observed
Drill Hole Set	⊙	P.P.N. Permanent Parcel Number
Drill Hole Found	⊙	
Railroad Spike Set	⊕	
Railroad Spike Found	⊕	

SURVEYOR CERTIFICATION
 I HEREBY CERTIFY THAT I HAVE SURVEYED THE PREMISES SHOWN HEREON,
 AND PREPARED THE ATTACHED PLAT IN ACCORDANCE WITH THE PROVISIONS
 OF CHAPTER 4733-37 OF THE OHIO ADMINISTRATIVE CODE. THE DIMENSIONS
 SHOWN HEREON ARE IN FEET AND DECIMAL PARTS THEREOF, ALL OF WHICH
 ARE CORRECT TO THE BEST OF MY KNOWLEDGE AND BELIEF. MONUMENTS
 AS INDICATED WERE FOUND OR SET AS SHOWN HEREON.



Michael P. Spellacy 6/15/2012
 MICHAEL P. SPELLACY P.S. #9169 DATE

REV. No.	DATE	BY	CHK'D	DATE: 05/22/2012	Part of Parcels 27-B-047-A-00-027-0 and 27-B-049-A-00-013-0 City of Willoughby - Lake County - Ohio	POLARIS ENGINEERING & SURVEYING, INC. 34600 CHARDON ROAD - SUITE D WILLOUGHBY HILLS, OHIO 44094 (440) 944-4433 (440) 944-3722 (Fax) www.polaris-es.com	CONTRACT No.	05833
				SCALE: HOR. 1"=40'			SHEET	OF
				FOLDER: dwg\Plats			01	01
				FILENAME: 4 Lot Minor Subdivision				
				TAB: Map of Lands				