

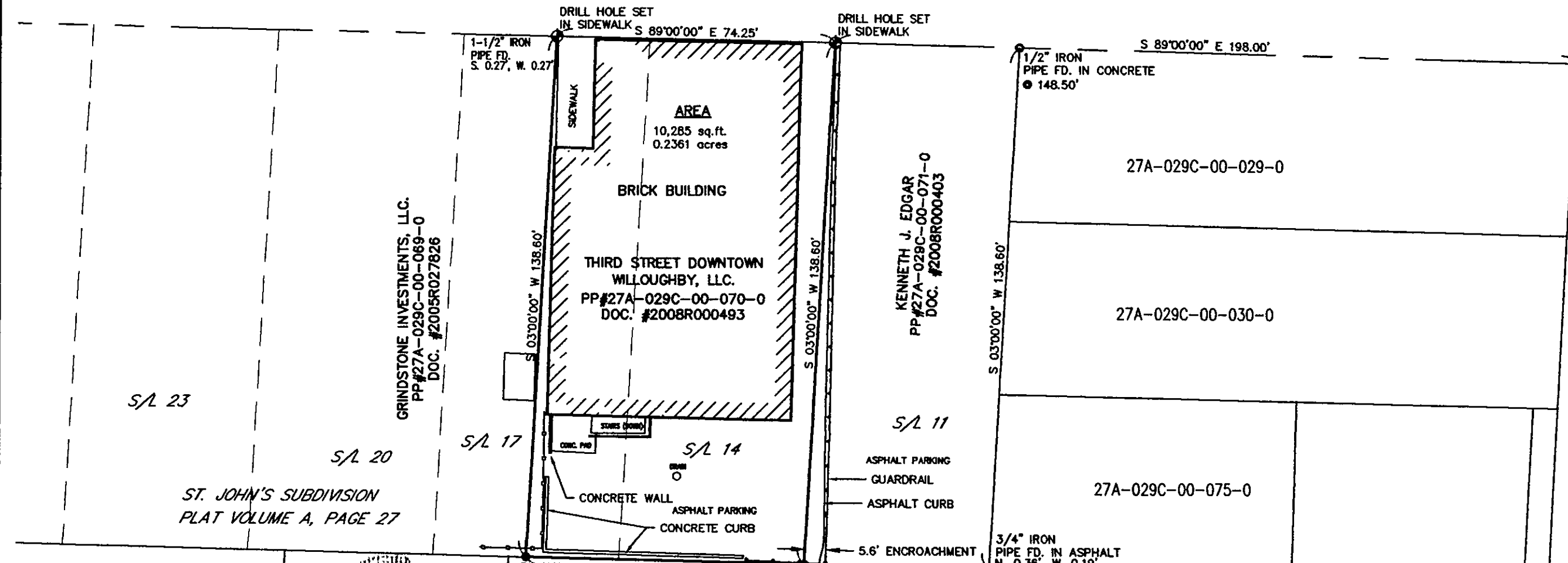
BOUNDARY SURVEY

OF LAND CONVEYED TO THIRD STREET DOWNTOWN WILLOUGHBY, LLC BY DOCUMENT NO. 2008R000493

KNOWN AS SUBLOT 14 AND THE EASTERLY 1/2 OF SUBLOT 17 IN ORIGINAL LOT NO. 96 AS SHOWN ON THE ST. JOHN'S SUBDIVISION
CITY OF WILLOUGHBY - COUNTY OF LAKE - STATE OF OHIO

THIRD STREET 49.50' WIDE

ERIE STREET 60' WIDE



S/L 23

S/L 20

ST. JOHN'S SUBDIVISION
PLAT VOLUME A, PAGE 27

GRINDSTONE INVESTMENTS, LLC.
PP#27A-029C-00-069-0
DOC. #2005R027826

S/L 17

S/L 14

S/L 11

DRILL HOLE SET
IN SIDEWALK S 89°00'00" E 74.25'

DRILL HOLE SET
IN SIDEWALK

1-1/2" IRON
PIPE FD. IN
S. 0.27', W. 0.27'

1/2" IRON
PIPE FD. IN CONCRETE
● 148.50'

S 89°00'00" E 198.00'

AREA
10,285 sq. ft.
0.2361 acres

BRICK BUILDING

THIRD STREET DOWNTOWN
WILLOUGHBY, LLC.
PP#27A-029C-00-070-0
DOC. #2008R000493

KENNETH J. EDGAR
PP#27A-029C-00-071-0
DOC. #2008R000403

27A-029C-00-029-0

27A-029C-00-030-0

27A-029C-00-075-0

CONC. PWB
CONCRETE WALL
ASPHALT PARKING
CONCRETE CURB

ASPHALT PARKING
GUARDRAIL
ASPHALT CURB

5.6' ENCROACHMENT

3/4" IRON
PIPE FD. IN ASPHALT
N. 0.36', W. 0.19'

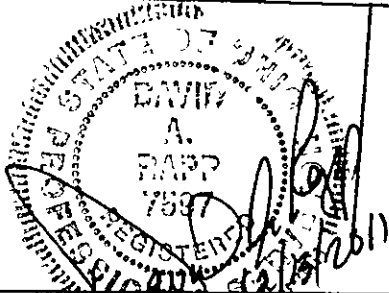
PK NAIL
SET IN ASPHALT
S 89°00'00" E 74.25'
WESTERN RESERVE REAL
ESTATE HOLDINGS, LLC.
PP# 27A-029C-00-040-0
DOC. #2005R023520

5/8" IRON
PIN SET
WILLO DEVELOPMENT CO.
PP#27A-029C-00-038-0
VOLUME 264, PAGE 0413

GRAPHIC SCALE



(IN FEET)
1 inch = 30 ft.



DISTANCES ARE GIVEN IN FEET AND DECIMAL PARTS THEREOF
UNLESS OTHERWISE NOTED. SURVEYED DEC., 2011
THIS PLAT WAS PREPARED UNDER MY SUPERVISION AND IS
CORRECT TO THE BEST OF MY KNOWLEDGE AND BELIEF
AND IN ACCORDANCE WITH THE PROVISIONS OF
CHAPTER 4733-37 OF THE OHIO ADMINISTRATIVE CODE.

David A. Rapp
DAVID A. RAPP P.S. No. 7597

DAVID RAPP SERVICES
3406 DAYTON ROAD
MADISON, OHIO 44057
(440) 983-1607

DATE: Dec 2011
CHECKED BY: DAR
APPROVED BY: DAR
PS No. 7597

D31108

1 1

ALL IRON PINS SET ARE 5/8" (30" OF LENGTH)
AND ARE IDENTIFIED BY A PLASTIC CAP BEARING THE
IMPRINT "7597".

SOURCES:
DEEDS AND PLATS AS NOTED

Bearings are to an assumed
meridian and are used to denote
angles only.