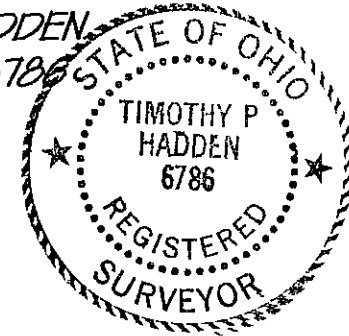




CERTIFICATION

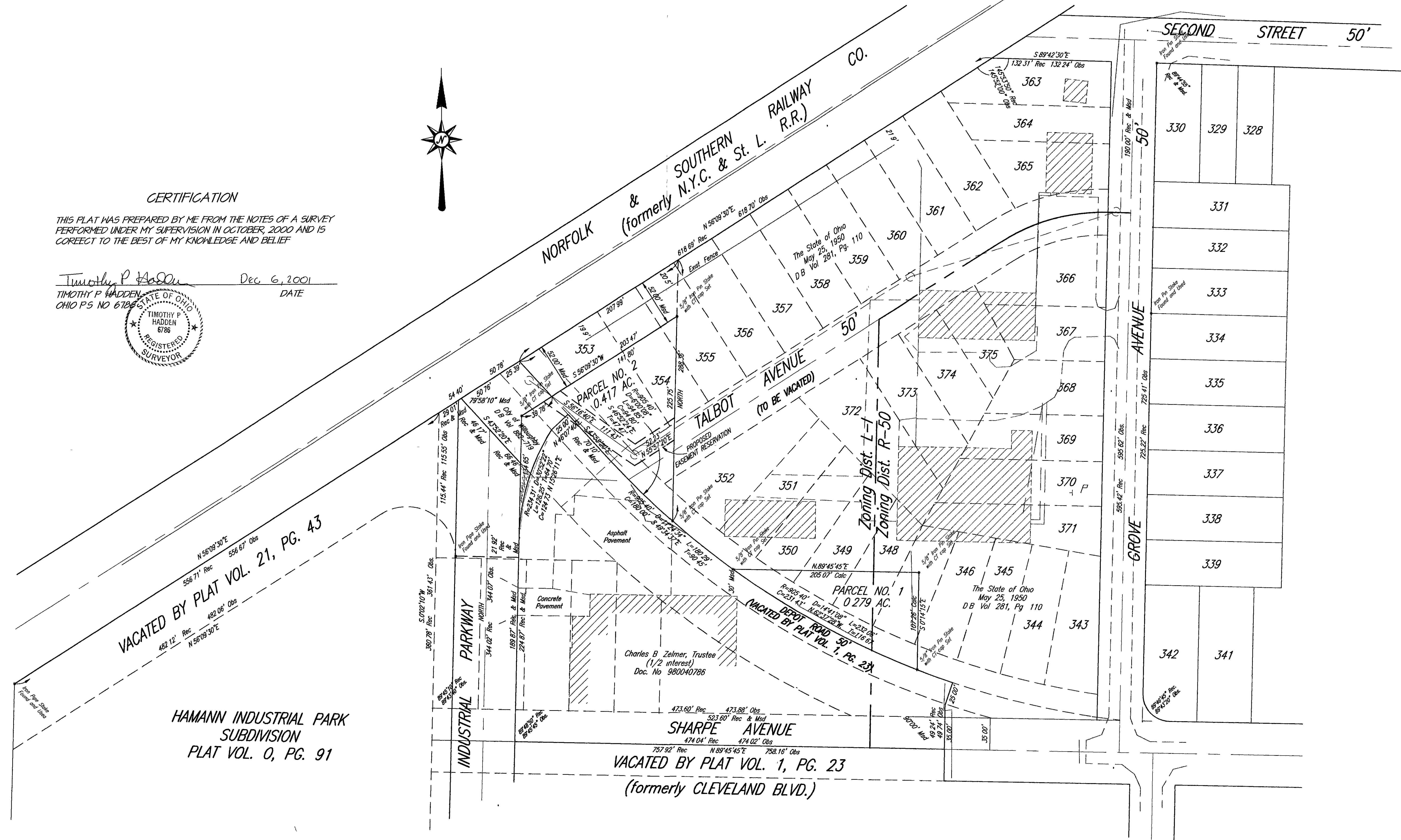
THIS PLAT WAS PREPARED BY ME FROM THE NOTES OF A SURVEY PERFORMED UNDER MY SUPERVISION IN OCTOBER, 2000 AND IS CORRECT TO THE BEST OF MY KNOWLEDGE AND BELIEF

Timothy P. Hadden
 TIMOTHY P. HADDEN
 OHIO P.S. NO. 6788
 Dec 6, 2001
 DATE



H:\2000\00280\survey\00280CCTL DWG 10/06/2000 08:16:55 AM EDT

27A-14A-18
 LOT 1 - TR. 14
 INDUSTRIAL PARKWAY



VACATED BY PLAT VOL. 21, PG. 43

HAMANN INDUSTRIAL PARK
 SUBDIVISION
 PLAT VOL. 0, PG. 91

SHARPE AVENUE
 VACATED BY PLAT VOL. 1, PG. 23
 (formerly CLEVELAND BLVD.)

CT Consultants
 Engineers • Architects • Planners

REV NO	DESCRIPTION	DATE	BY	CHK D

DATE	
DRAWN BY	
CHECKED BY	
APPROVED BY	
FB No	
PG	

PLAT OF SURVEY
 FOR
 THE CITY OF WILLOUGHBY
 BEING PARTS OF
 ORCHARD PARK ALLOTMENT No. 2
 WILLOUGHBY CITY-LAKE COUNTY-OHIO

SCALE	
HOR	1" = 50'
VERT	
CONTRACT No	
00280	
SHEET NO	OF