

MINOR LOT SPLIT

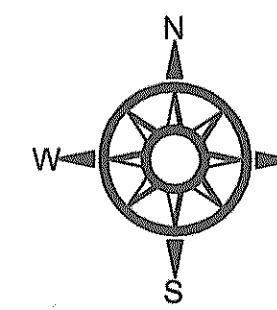
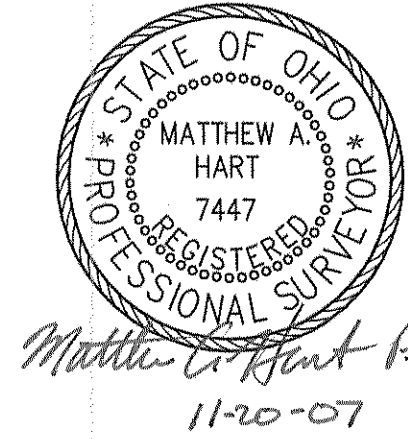
LANDS OF PARISH OF GRACE CHURCH - AKA GRACE EPISCOPAL CHURCH

PART OF LOTS 7, & 8 - TRACT 10

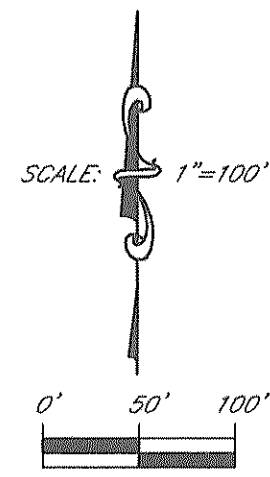
CITY OF WILLOUGHBY, CITY OF WILLOUGHBY HILLS, LAKE COUNTY, OHIO

**T9N, R10W
JULY 31, 2007**

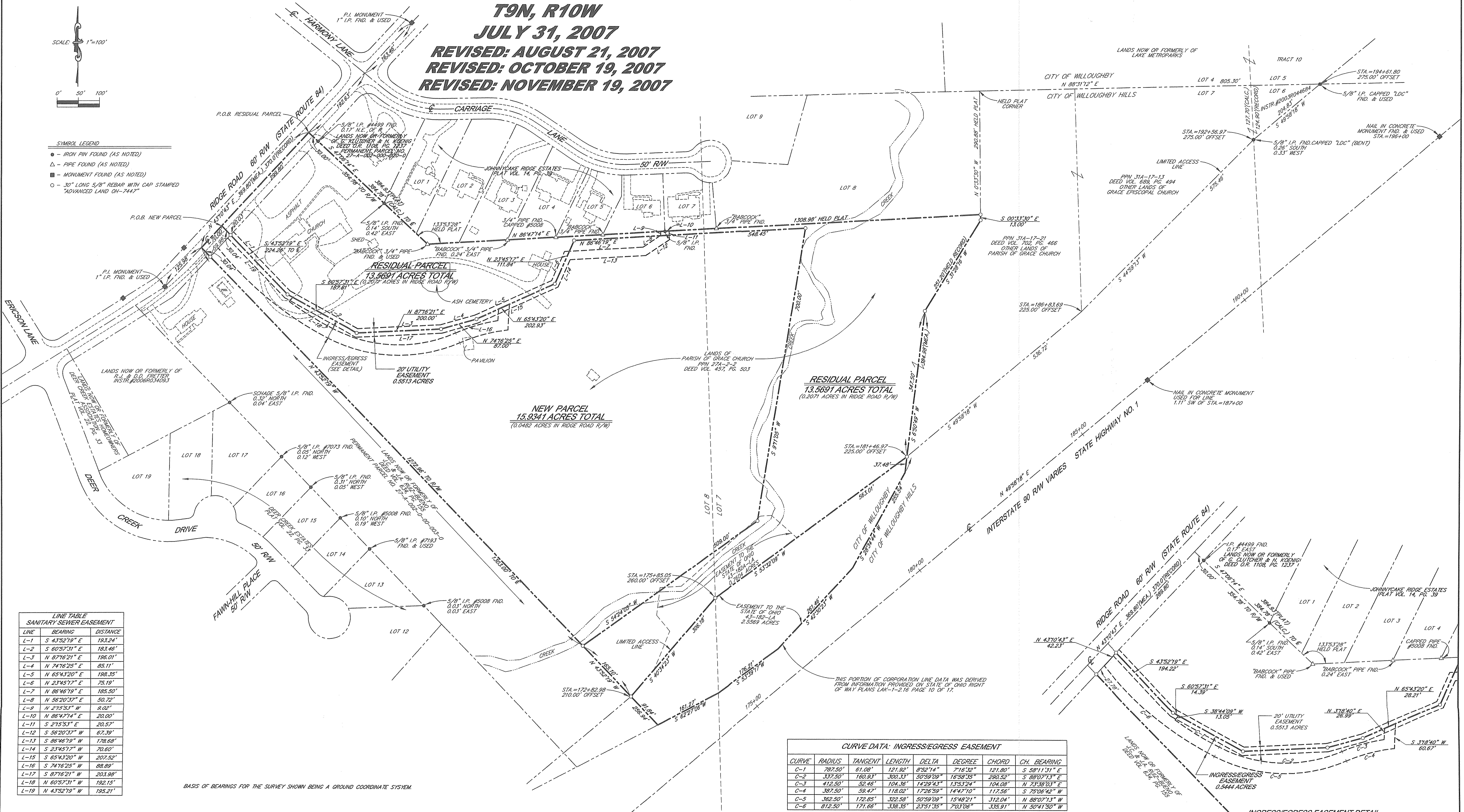
**REVISED: AUGUST 21, 2007
REVISED: OCTOBER 19, 2007
REVISED: NOVEMBER 19, 2007**



PREPARED BY:
ADVANCED LAND MEASUREMENT, INC.
"PROFESSIONAL SURVEYORS"
7433 WARREN-SHARON ROAD
BROOKFIELD, OHIO 44403
PHONE: (330)448-6280 FAX: (330)448-6281
MATTHEW A. HART P.S. NO. 7447
E-MAIL alimnc@sbcglobal.net



- SYMBOL LEGEND**
- - IRON PIN FOUND (AS NOTED)
 - - PIPE FOUND (AS NOTED)
 - - MONUMENT FOUND (AS NOTED)
 - - 30" LONG 5/8" REBAR WITH CAP STAMPED "ADVANCED LAND 04-7447"



**LINE TABLE
SANITARY SEWER EASEMENT**

LINE	BEARING	DISTANCE
L-1	S 43°52'19" E	183.24'
L-2	S 80°57'51" E	183.46'
L-3	N 87°16'21" E	196.01'
L-4	N 74°16'25" E	85.11'
L-5	N 65°43'20" E	198.35'
L-6	N 23°45'17" E	75.19'
L-7	N 86°46'19" E	185.50'
L-8	N 56°20'37" E	50.72'
L-9	N 2°15'53" W	8.02'
L-10	N 86°47'14" E	20.00'
L-11	S 2°15'53" E	20.97'
L-12	S 56°20'37" W	67.39'
L-13	S 86°46'19" W	178.68'
L-14	S 23°45'17" W	70.60'
L-15	S 65°43'20" W	207.52'
L-16	S 74°16'25" W	88.89'
L-17	S 87°16'21" W	203.98'
L-18	N 80°57'51" W	192.15'
L-19	N 43°52'19" W	195.21'

CURVE DATA: INGRESS/EGRESS EASEMENT

CURVE	RADIUS	TANGENT	LENGTH	DELTA	DEGREE	CHORD	CH. BEARING
C-1	787.50'	61.08'	121.92'	8°52'14"	7°16'32"	121.80'	S 58°11'31" E
C-2	337.50'	160.93'	300.33'	50°59'08"	16°58'35"	290.52'	S 88°07'13" E
C-3	412.50'	32.46'	104.36'	14°29'43"	13°53'24"	104.08'	N 73°59'03" E
C-4	387.50'	38.47'	118.02'	17°26'59"	14°47'10"	117.58'	S 75°06'42" W
C-5	382.50'	172.85'	322.68'	50°59'08"	15°48'21"	312.04'	N 88°07'13" W
C-6	812.50'	171.66'	338.35'	23°51'35"	7°03'06"	338.91'	N 50°41'50" W

BASIS OF BEARINGS FOR THE SURVEY SHOWN BEING A GROUND COORDINATE SYSTEM.

THIS PORTION OF CORPORATION LINE DATA WAS DERIVED FROM INFORMATION PROVIDED ON STATE OF OHIO RIGHT OF WAY PLANS LAK-1-216 PAGE 10 OF 17.