

PROPERTY DETAILS

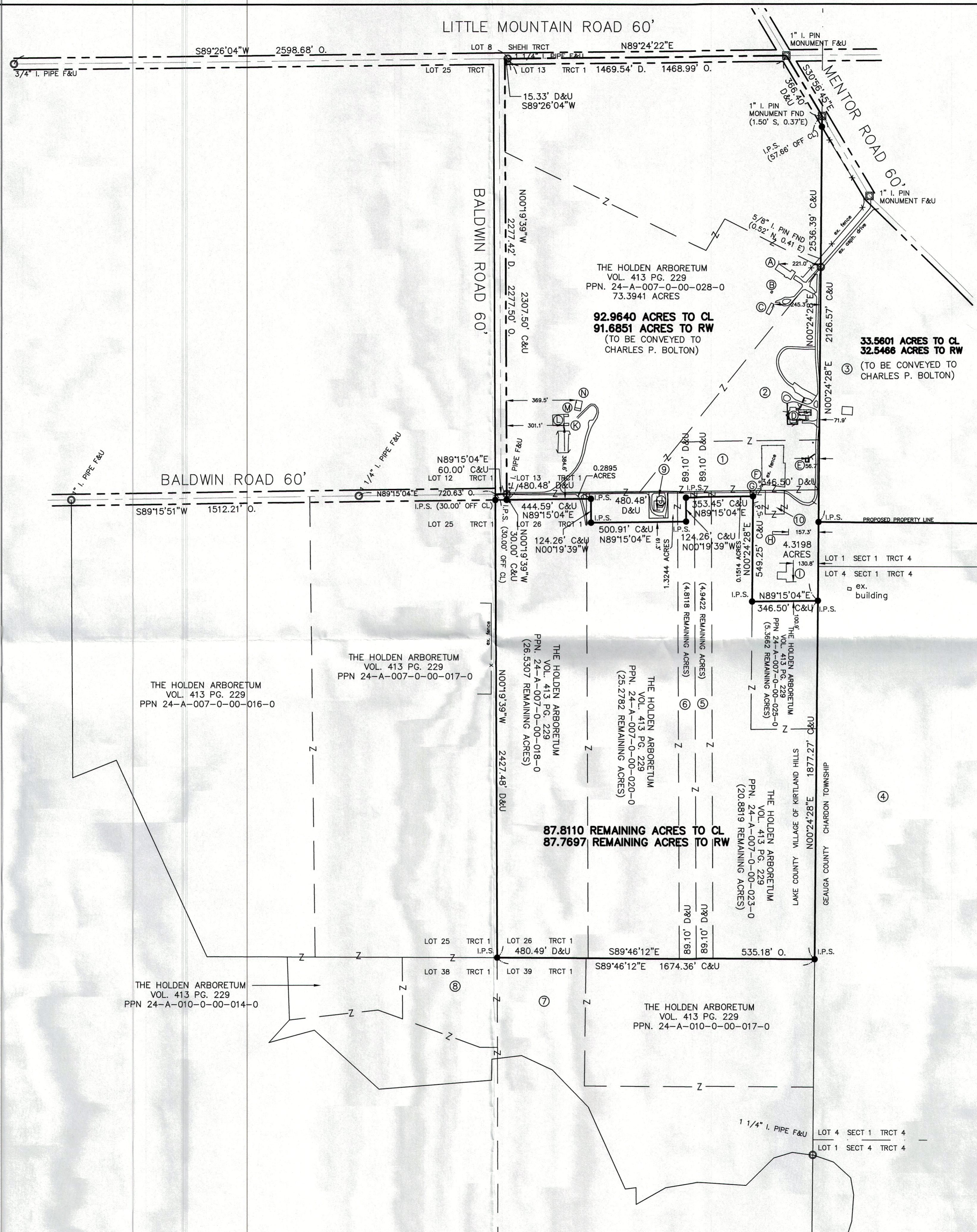
- THE HOLDEN ARBORETUM
VOL. 413 PG. 229
PPN 24-A-007-0-00-026-0
5.0372 ACRES
- THE HOLDEN ARBORETUM
VOL. 413 PG. 229
PPN 24-A-007-0-00-027-0
PARCEL NO. 1
7.6030 ACRES
- THE HOLDEN ARBORETUM
VOL. 295 PG. 202
PPN 06-706100
- HOLDEN ARBORETUM
VOL. 295 PG. 202
PPN 06-706100
- THE HOLDEN ARBORETUM
VOL. 413 PG. 229
PPN 24-A-007-0-00-022-0
PARCEL NO. 2 (PART B)
0.0613 ACRES
- THE HOLDEN ARBORETUM
VOL. 413 PG. 229
PPN 24-A-007-0-00-021-0
PARCEL NO. 2
0.1884 ACRES
- THE HOLDEN ARBORETUM
VOL. 413 PG. 229
PPN 24-A-010-0-00-016-0
- THE HOLDEN ARBORETUM
VOL. 413 PG. 229
PPN 24-A-010-0-00-015-0
- THE HOLDEN ARBORETUM
VOL. 413 PG. 229
PPN 24-A-007-0-00-019-0
0.3081 ACRES
- THE HOLDEN ARBORETUM
VOL. 413 PG. 229
PPN 24-A-007-0-00-024-0
0.2868 ACRES

REFERENCES USED:

- DEEDS OF RECORD
- OLD TAX MAPS
- MERKEL ACRES VOL. L PG. 46

BUILDING DETAILS

- A. BARN
- B. SHED
- C. HOUSE
- D. HOUSE
- E. OUTSIDE RESTROOM
- F. SHED
- G. SHED
- H. OLD FOUNDATION
- I. OLD FOUNDATION
- J. HOUSE
- K. POOL BLDG
- L. POOL
- M. POOL BLDG
- N. BLDG



PLAT OF SURVEY AND LOT SPLIT AND CONSOLIDATION

For CHARLES P. BOLTON AND THE HOLDEN ARBORETUM

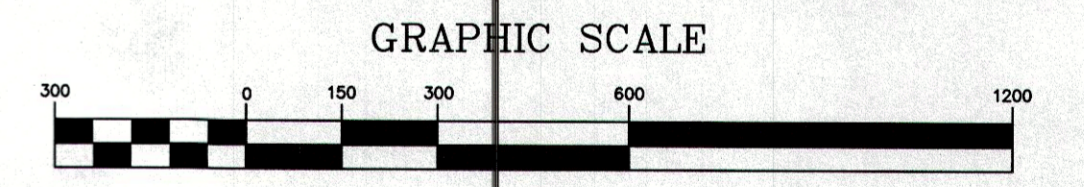
SITUATED IN THE VILLAGE OF KIRTLAND HILLS, COUNTY OF LAKE AND THE STATE OF OHIO AND KNOWN AS BEING A PART OF ORIGINAL LOT NUMBER 13 AND 26, TRACT 1.

PREPARED FOR:
CHARLES P. BOLTON
50 PUBLIC SQUARE, SUITE 4100
CLEVELAND, OH 44113

PREPARED FOR:
THE HOLDEN ARBORETUM
9500 SPERRY RD
KIRTLAND, OH 44094

LEGEND

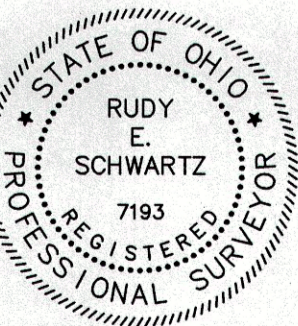
- i.p.s. 5/8" X 30" Iron Pin Set (I.D. SCHWARTZ)
- i.Pin Iron Pin
- i.Pipe Iron Pipe
- Mon. Monument
- Fe Fence post
- Mag Mag Nail Set
- Fnd. Found
- D. Deed
- R/Rec Record
- M/Msd Measured
- O/Obs Observed
- C/Calc Calculated
- U. Used
- D.R. Dead Record
- O.R. Official Record
- C.L. C/L Centerline
- e/p Edge of Pavement
- P Plat record information



DECEMBER 27, 2016

I HEREBY CERTIFY THAT THIS PLAT WAS PREPARED FROM A FIELD SURVEY MADE UNDER MY DIRECT SUPERVISION. MONUMENTS WERE FOUND OR SET AS INDICATED. DIMENSIONS ARE EXPRESSED IN FEET AND DECIMAL PARTS THEREOF. BEARINGS REFER TO AN ASSUMED MERIDIAN AND ARE INTENDED TO INDICATE ANGLES ONLY. ALL OF WHICH ARE CORRECT TO THE BEST OF MY KNOWLEDGE AND BELIEF. THIS PLAT WAS PREPARED IN ACCORDANCE WITH THE PROVISIONS OF CHAPTER 4733-37 OF THE OHIO ADMINISTRATIVE CODE.

Rudy E. Schwartz 2-15-17
RUDY E. SCHWARTZ, P.S. #7193 Date



PREPARED BY:
SCHWARTZ LAND SURVEYING INC.

RUDY E. SCHWARTZ
PROFESSIONAL SURVEYOR
12121 KINSMAN ROAD
NEWBURY, OHIO 44065
440-564-8174 Fax: 440-564-8285