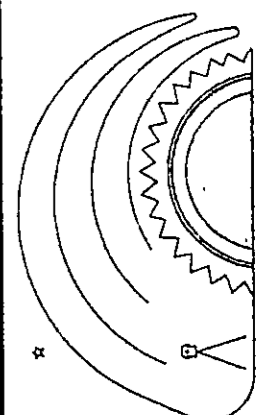


ALTA / ACSM LAND TITLE SURVEY
for
8227 CHILLICOTHE ROAD
BEING PART OF ORIGINAL MENTOR TOWNSHIP BLAKE LOT, TRACT 1 AND
BLOSS LOT, TRACT 2, NOW SITUATED IN THE
VILLAGE OF KIRTLAND HILLS
COUNTY OF LAKE - STATE OF OHIO

4
SHEET NO.
OF
4



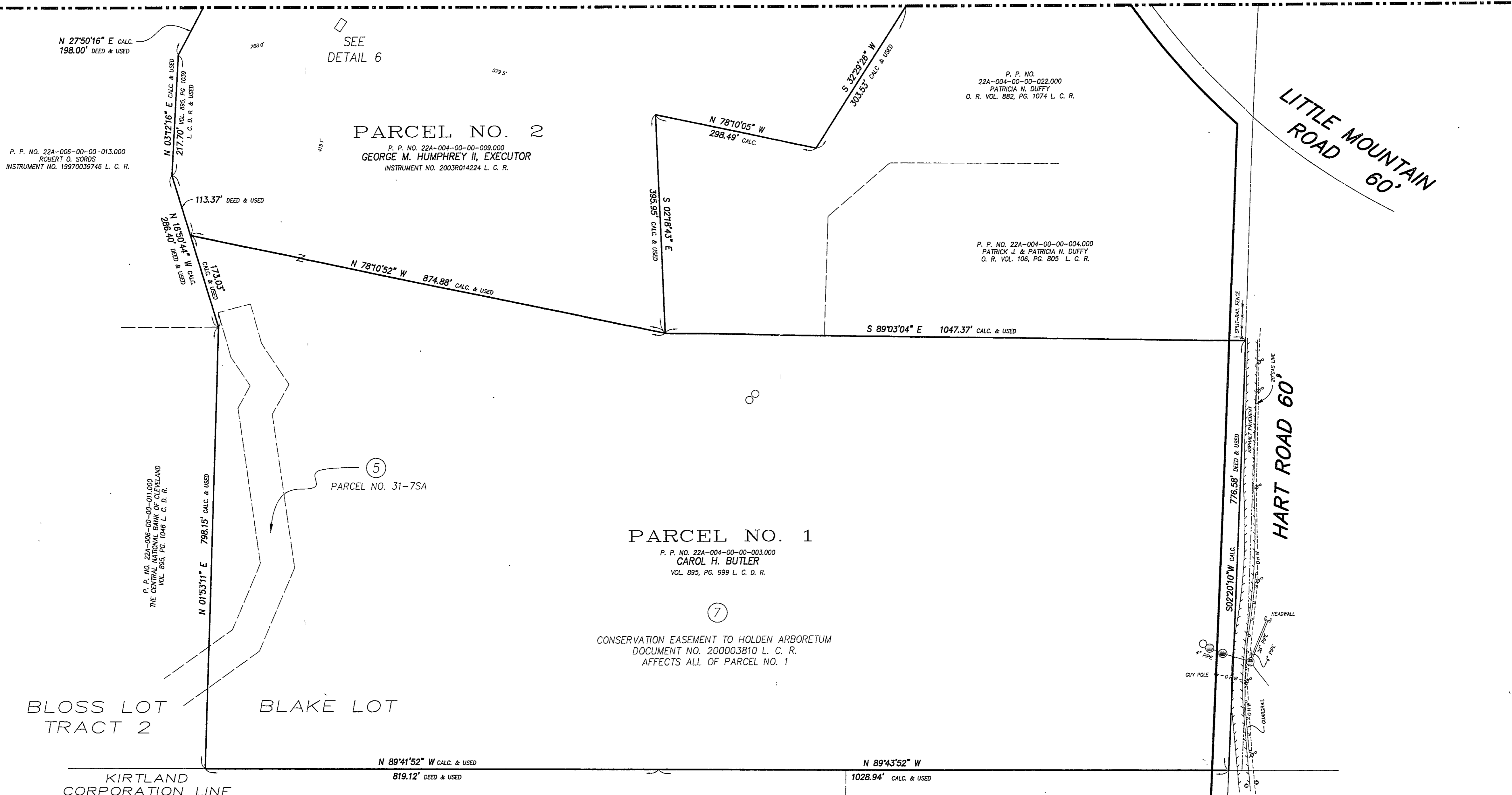
NORTH

GRAPHIC SCALE
(IN FEET)
1 inch = 100 ft.

1-STORY
FRAME-SHED
W/NO. 1
2 1/2" DIA. FT
HT=5'0 1/2"
DETAIL NO. 6
NOT TO SCALE

- LEGEND
- UTILITY POLE
 - UTILITY/LIGHT POLE
 - LIGHT POLE
 - TRAFFIC POLE
 - GROUND LIGHT
 - CLEAN OUT
 - WATER VALVE
 - WATER METER
 - GAS VALVE
 - GAS METER
 - STEEL POST
 - BRICK POST
 - CATON BASIN
 - STORM MANHOLE
 - COMBINED MANHOLE
 - SANITARY MANHOLE
 - HYDRANT
 - SIAMASE HYDRANT
 - SIGN
 - WATER MANHOLE
 - TELEPHONE MANHOLE
 - ELECTRIC MANHOLE
 - ELECTRIC TRANSFORMER
 - AIR CONDITIONING UNIT
 - BOLLARD

M A T C H L I N E



MCSTEEN AND ASSOCIATES, INC.
ENGINEERS & SURVEYORS
26451 CURTISS WRIGHT PARKWAY - RICHMOND HEIGHTS, OH 44143
PHONE: 1-216-797-9800 FAX: 1-216-797-0800