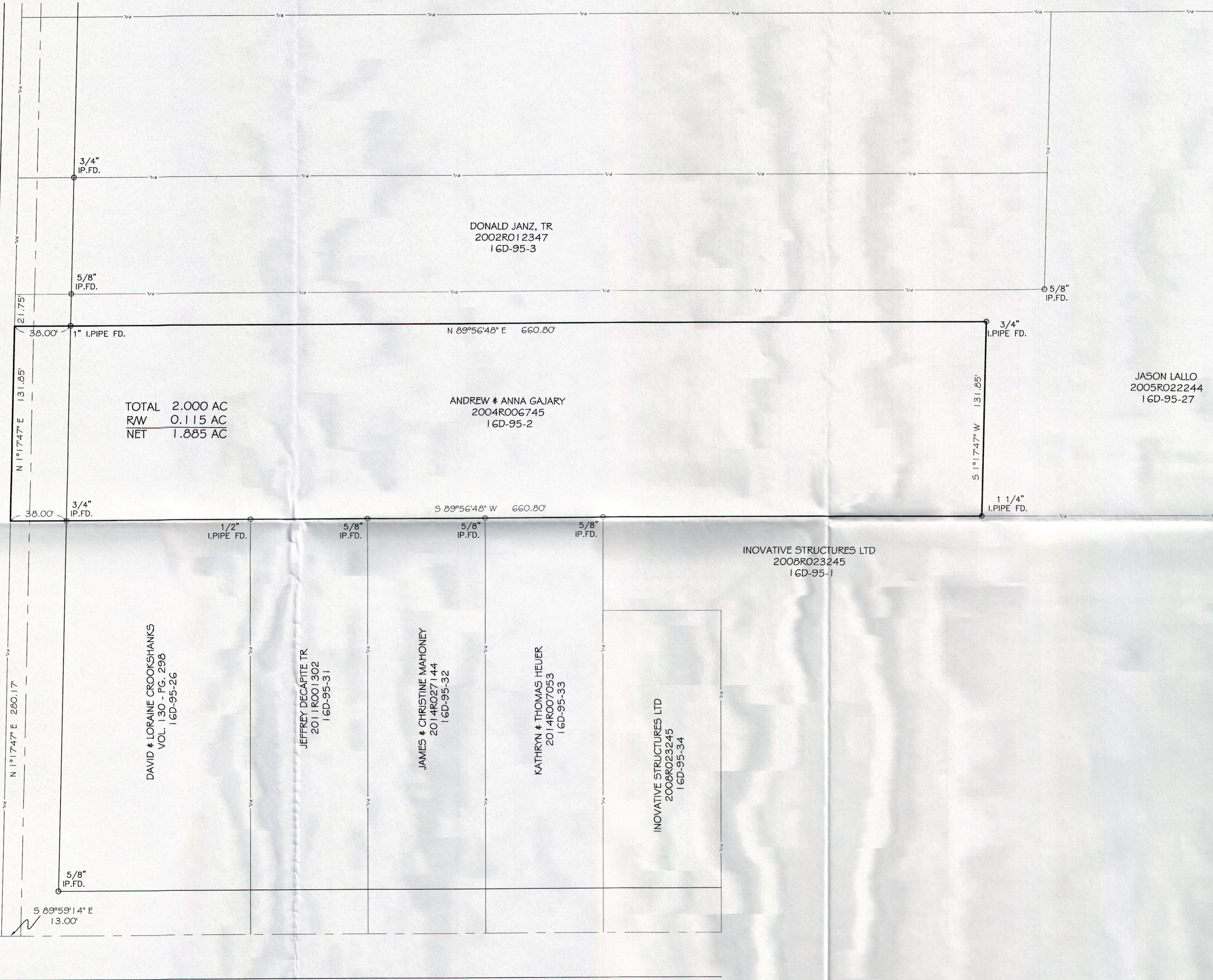


COLLINS ROAD - 50'



MUNSON ROAD - 60'

NOTES:
 This plat was prepared from an abstract of title as revealed by a search of the public records.
 Documents used in this survey are cited on the plat.
 Occupation is shown where noted on the plat.
 Size of monuments is shown on the plat.
 Bearings are based on the Collins Road as being North to describe angles.

Harry S. Jones Jr.
 Harry S. Jones Jr., P/S