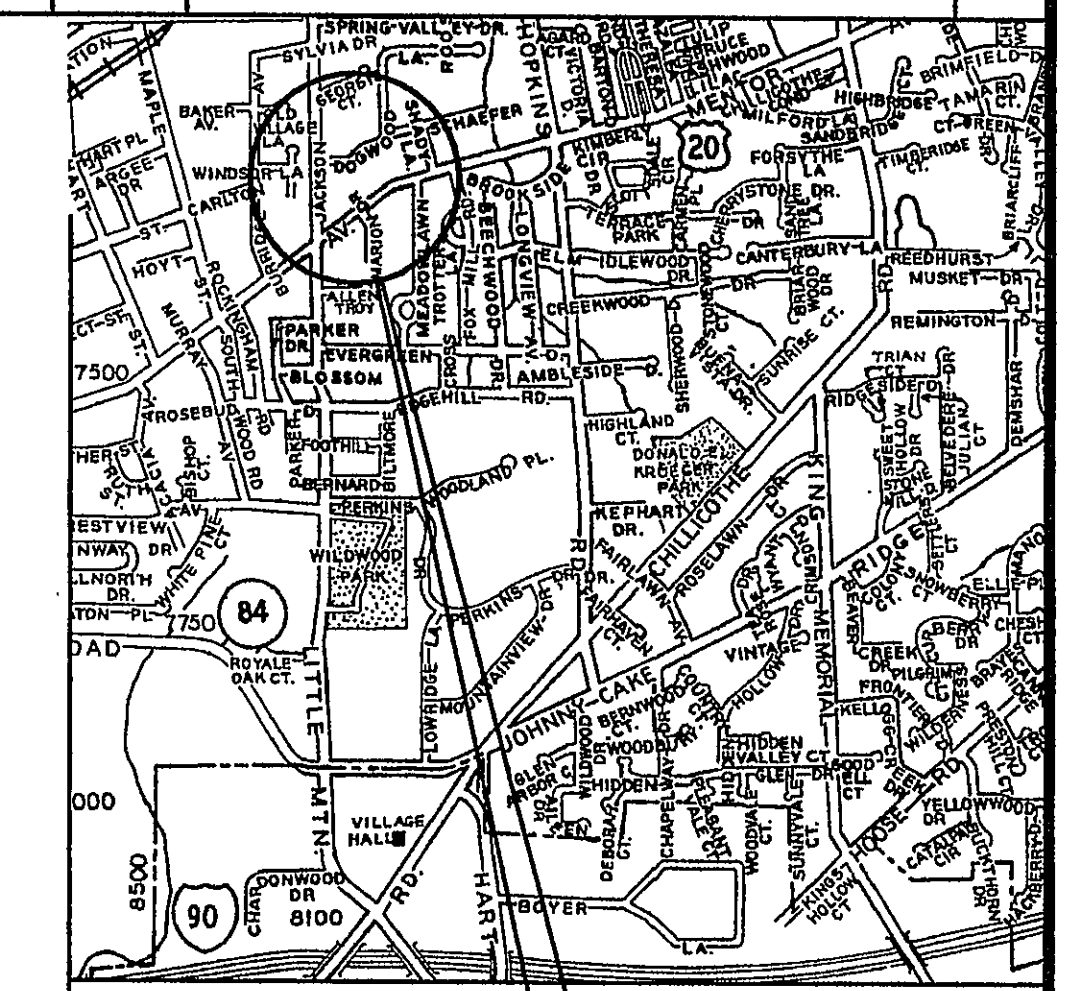
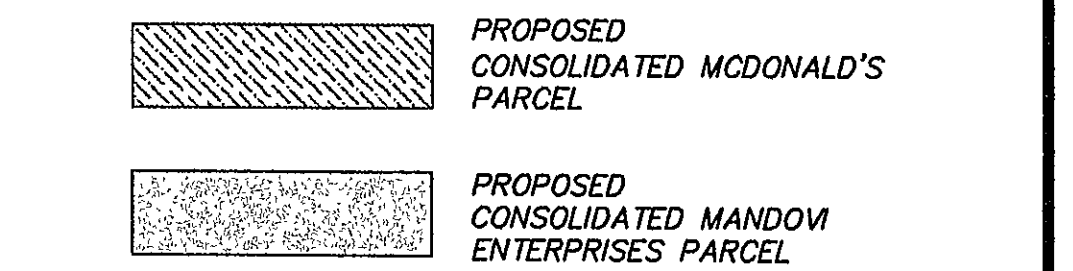


DATE	REVISIONS	BY
12/6/07	REVISE SPLIT LINES PER ARCHITECT	K.B.
7/28/08	UPDATE PER McDONALDS	K.B.
8/18/08	ADD ABUTTER & JACKSON R/W WIDTH PER LAKE COUNTY TAX MAPS FEPT.	K.B.



VICINITY MAP



**NOTES:**  
 "IR. PIN SET" INDICATES 5/8 DIAMETER BY 30" LONG REBAR WITH IDENTIFICATION "D.G. BOHNING ASSOC."

**SURVEY REFERENCES:**  
 ORIGINAL "1986" SURVEY FOR MCDONALD'S CORP. BY DONALD G. BOHNING & ASSOC., INC., DATED JUNE, 1986.  
 SURVEY FOR MCDONALD'S CORP. BY DONALD G. BOHNING & ASSOC., INC., DATED JUNE, 1999. LAST UPDATED MARCH, 2007.

**SHEET INDEX:**

SHEET	DESCRIPTION
1	SURVEY MAP
2	LOCATION MAP
3	LEGAL DESCRIPTIONS

**MAP OF ALTA/ACSM LAND TITLE SURVEY MADE FOR AND AT THE INSTANCE OF MCDONALD'S CORPORATION, A DELAWARE CORPORATION; MCDONALD'S REAL ESTATE COMPANY, A DELAWARE CORPORATION; MCDONALD'S USA, LLC, A DELAWARE LIMITED LIABILITY COMPANY; CHICAGO TITLE INSURANCE COMPANY; AND MANDOW ENTERPRISES, INC.**

**BING PART OF ORIGINAL MENTOR TOWNSHIP PARKER LOT NOW IN THE CITY OF MENTOR LAKE COUNTY, OHIO**

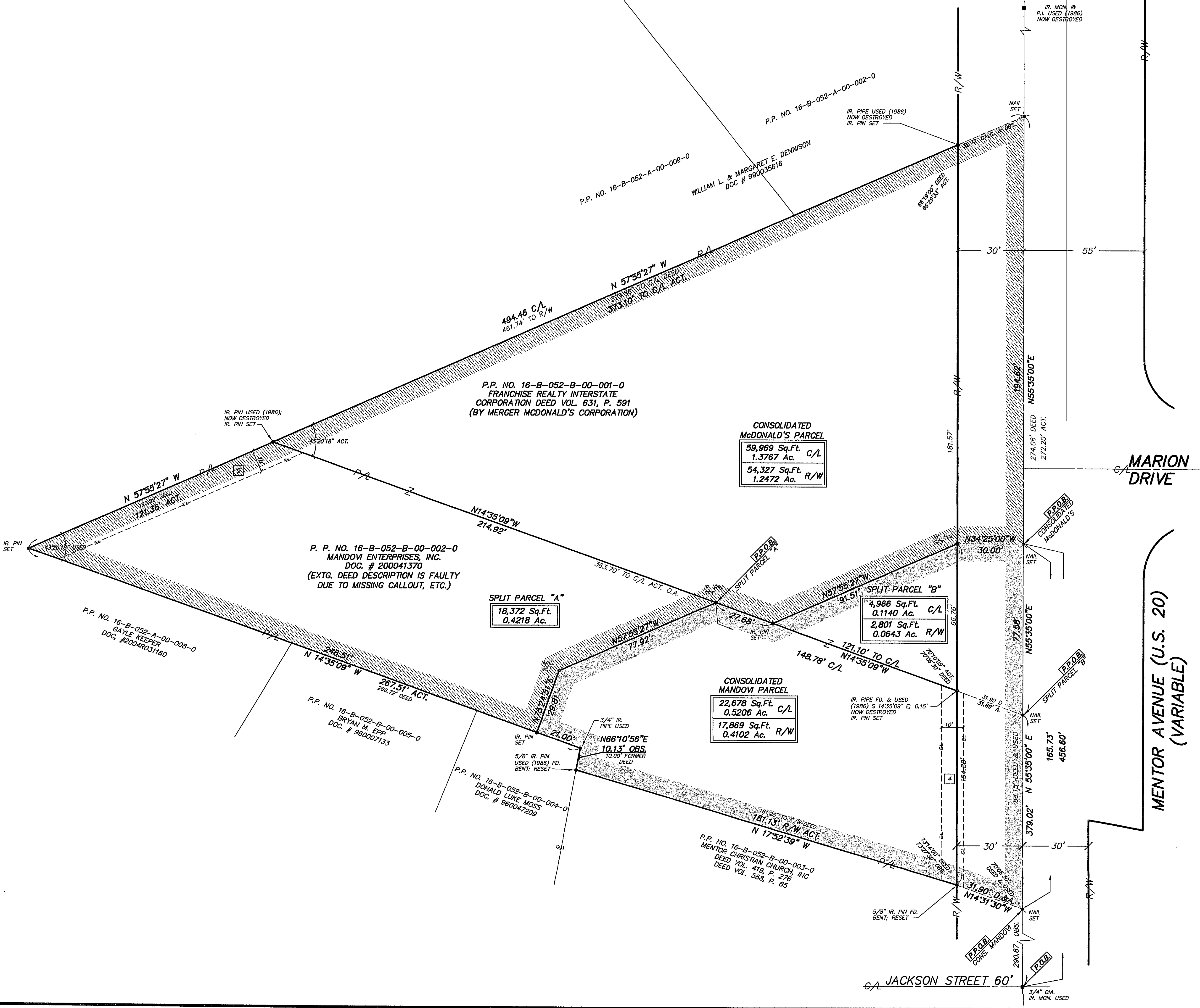
THE UNDERSIGNED HEREBY CERTIFIES TO: MCDONALD'S CORPORATION, A DELAWARE CORPORATION; MCDONALD'S REAL ESTATE COMPANY, A DELAWARE CORPORATION; MCDONALD'S USA, LLC, A DELAWARE LIMITED LIABILITY COMPANY; CHICAGO TITLE INSURANCE COMPANY; AND MANDOW ENTERPRISES, INC. THAT THIS MAP SET (SHEETS 1-3) AND THE SURVEY ON WHICH IT IS BASED WERE MADE IN ACCORDANCE WITH THE REQUIREMENTS PROVIDED BY MCDONALD'S CORPORATION AND THE "MINIMUM STANDARD DETAIL REQUIREMENTS FOR ALTA/ACSM LAND TITLE SURVEYS", JOINTLY ESTABLISHED AND ADOPTED BY ALTA AND NSPS IN 2005, AND INCLUDES ITEMS 1, 2, 3, 4, 5, 6, 7, 8, 9, 10, 11, 12, 13, 14, 16, AND 17 OF TABLE A THEREOF, PURSUANT TO THE ACCURACY STANDARDS AS ADOPTED BY ALTA AND NSPS, AND IN EFFECT ON THE DATE OF THIS CERTIFICATION. UNDERSIGNED FURTHER CERTIFIES THAT IN MY PROFESSIONAL OPINION, AS A LAND SURVEYOR REGISTERED IN THE STATE OF OHIO, THE RELATIVE POSITIONAL ACCURACY OF THIS SURVEY DOES NOT EXCEED THAT WHICH IS SPECIFIED THEREIN. DISTANCES ARE GIVEN IN FEET AND DECIMAL PARTS THEREOF; BEARINGS ARE REFERENCED TO AN ASSUMED MERIDIAN, AND ARE USED TO INDICATE ANGLES ONLY. ALL OF THE ABOVE WHICH IS CORRECT TO THE BEST OF MY PROFESSIONAL KNOWLEDGE, INFORMATION, AND BELIEF.

**STATE OF OHIO**  
 KENNETH L. BOHNING  
 6720  
 REGISTERED SURVEYOR

*Kenneth L. Bohning* 8/18/08  
 KENNETH L. BOHNING  
 REGISTERED SURVEYOR NO. 6720

**DONALD G. BOHNING & ASSOCIATES, INC.**  
 CIVIL ENGINEERING & SURVEYING  
 7979 HUB PARKWAY • VALLEY VIEW, OHIO 44125  
 PHONE: (216) 642-1130 FAX: (216) 642-1132

HORIZ. SCALE	1" = 20'	DRN	M.D.	CHKD.	K.B.	DATE	AUG., 2007	1
GR. SCALE		FILE NO.	17110Sv1	ORDER NO.	1711-S			3



P:\dcd\cd\p\17110s\17110S.DWG 8/18/2008 9:04:11 AM EDT