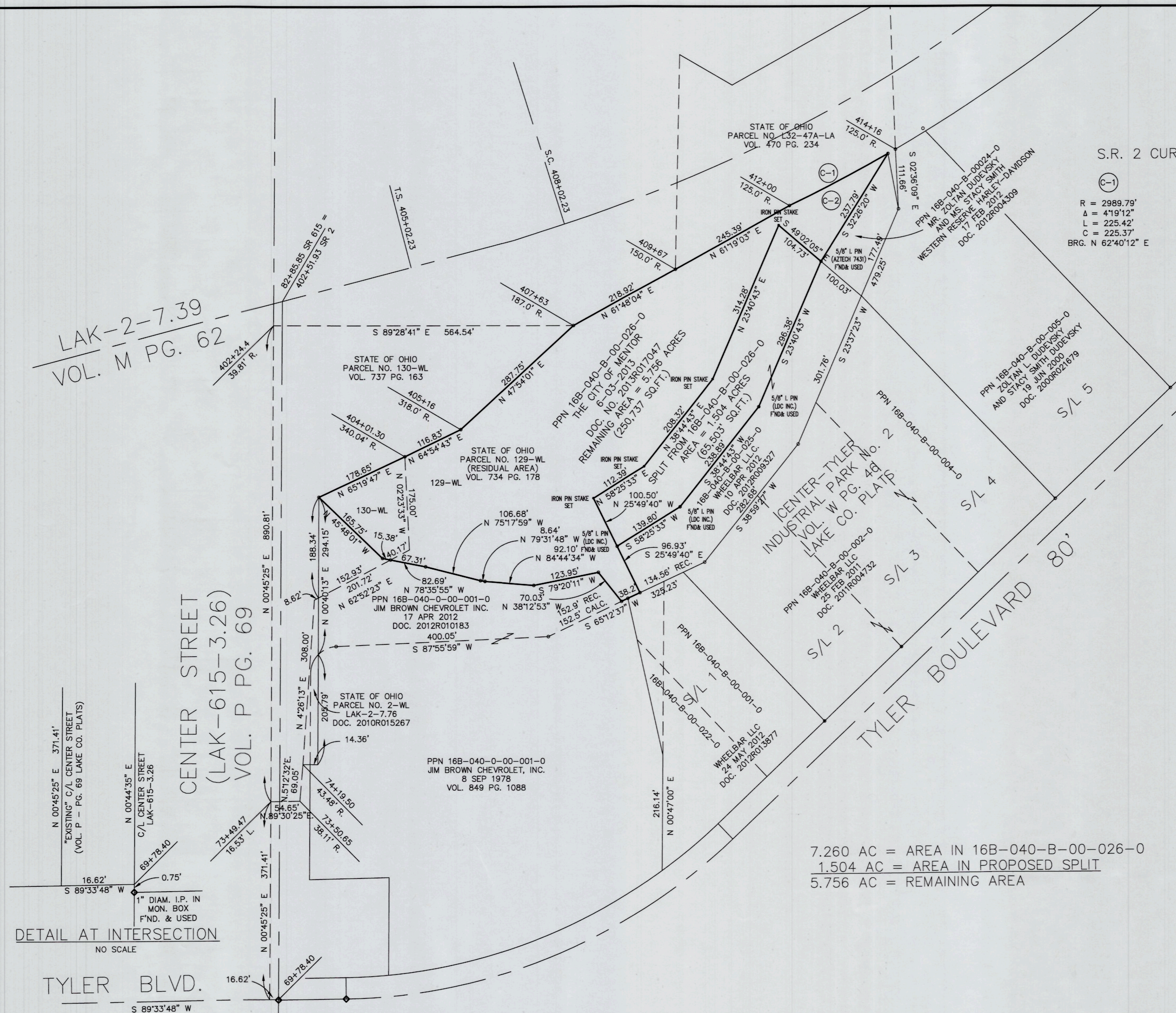


Copyright - Apr 06, 2020 - 11:00am CT Consultants, Inc. Documents\12200.154_CRT_SURVEY\DESC\CENTER ST at SR2.dwg Layout: 2 by: haddent

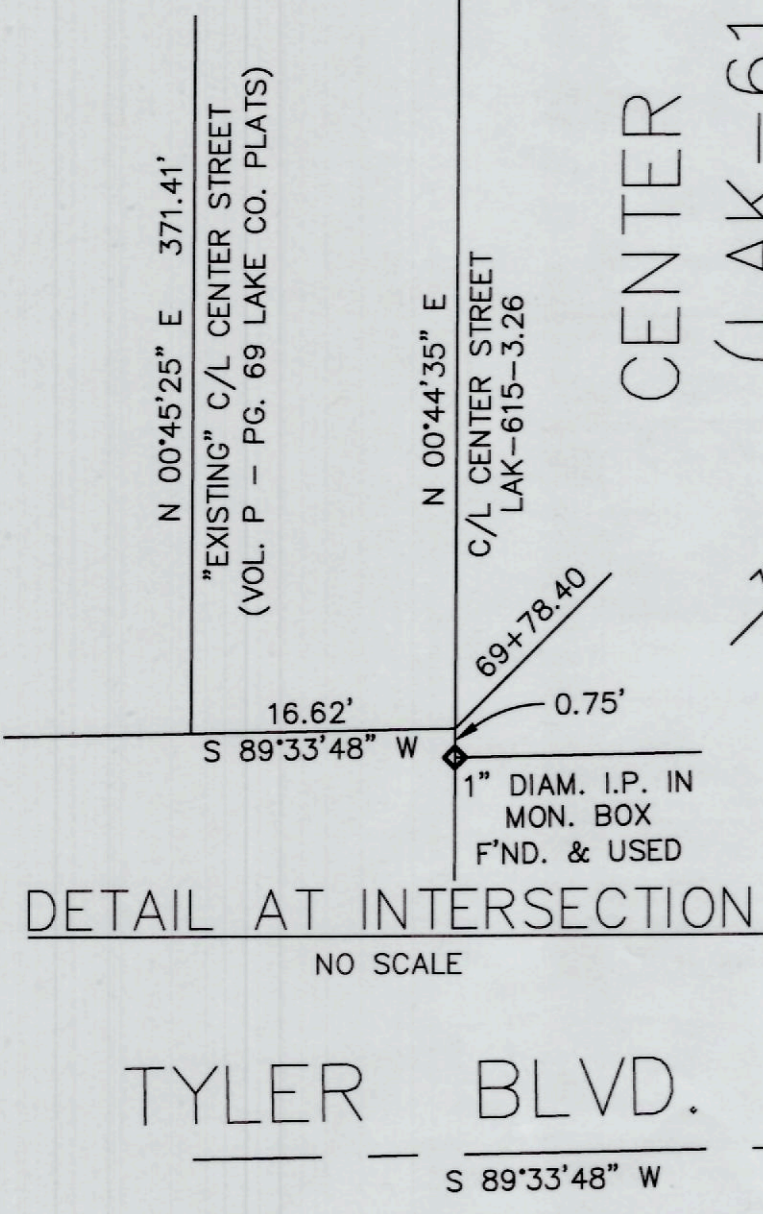
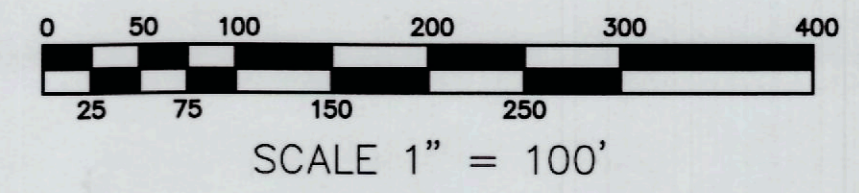


LAK-2-7.39
VOL. M PG. 62

CENTER STREET
(LAK-615-3.26)
VOL. P PG. 69

S.R. 2 CURVE DATA

Curve	R	Δ	L	C	BRG.
C-1	2989.79'	4°19'12"	225.42'	225.37'	N 62°40'12" E
C-2	2989.79'	4°00'42"	209.33'	209.29'	BRG. N 62°49'27" E



CERTIFICATION

THIS IS TO CERTIFY THAT THIS PLAT WAS PREPARED BY THE UNDERSIGNED, A REGISTERED SURVEYOR IN THE STATE OF OHIO, FOR AND AT THE REQUEST OF THE CITY OF MENTOR, A MUNICIPAL CORPORATION OF THE STATE OF OHIO.

DISTANCES SHOWN HEREON ARE EXPRESSED IN FEET AND DECIMAL PARTS THEREOF, ALL OF WHICH I CERTIFY TO BE CORRECT TO THE BEST OF MY KNOWLEDGE AND BELIEF.

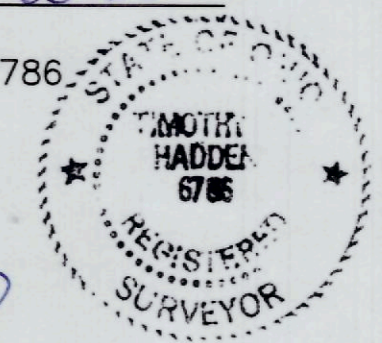
ALL POINTS DESIGNATED AS "IRON PIN STAKE SET" HAVE BEEN MONUMENTED BY A 5/8 INCH DIAMETER BY 30 INCH LONG STEEL REINFORCING BAR WITH A YELLOW PLASTIC CAP MARKED "CT CONSULTANTS INC."

BEARINGS CONTAINED HEREON ARE BASED UPON THOSE CONTAINED IN DEED CONVEYING FEE INTEREST IN AND TO PPN 16-B-040-B-00-026-0 AND RECORDED IN DOCUMENT NO. 2013R017047 OF LAKE COUNTY RECORDS AND ARE USED SOLELY FOR THE PURPOSE OF DETERMINING THE RELATIVE ANGULAR VALUE BETWEEN LINES SHOWN HEREON.

7.260 AC = AREA IN 16B-040-B-00-026-0
1.504 AC = AREA IN PROPOSED SPLIT
5.756 AC = REMAINING AREA

BY: Timothy P. Hadden 3-30-20
TIMOTHY P. HADDEN
OHIO REGISTERED SURVEYOR NO. 6786

APPROVED BY THE CITY OF MENTOR
PLANNING AND ZONING DIVISION
SIGNATURE [Signature]
DATE 7/22/20



CT Consultants
engineers | architects | planners
8150 Sterling Court Mentor, Ohio 44060
440.951.9000 www.ctconsultants.com

REV. NO.	DESCRIPTION	DATE	BY	CHK'D.

DATE: JULY, 2018
DRAWN BY: TPH
CHECKED BY: -
APPROVED BY: -
F.B. No. - PG. -

PLAT OF PROPOSED SPLIT OF LAND OF THE CITY OF MENTOR, OHIO PART OF ORIGINAL LOT 6, TRACT 8 NOW IN THE CITY OF MENTOR, LAKE COUNTY, OHIO

SCALE	
HOR.	1" = 100'
VERT.	
CONTRACT No.	
170407-06	
SHEET NO.	OF
1	1