

PLAT OF SURVEY

PREPARED FOR: MENTOR RIDGE FARMS ASSOC INC

PIN: 16-A-016-D-00-017-0

SITUATED IN THE CITY OF MENTOR, COUNTY OF LAKE, AND STATE OF OHIO AND BEING PART OF LOTS 1 AND 2, TRACT 1 OF TOWNSHIP 10 N, RANGE 9 W OF THE CONNECTICUT WESTERN RESERVE, AND ALSO KNOWN AS A PORTION OF COMMUNITY PROPERTY RECORDED IN PLAT VOL. 1, PG. 43 OF COUNTY RECORDS

PIN: 16-A-016-D-00-018-0
THOMAS N HORVATH TR ©(4)
DOCUMENT: 2006R028154

PIN: 16-A-016-D-00-019-0
HORVATH BRIAN C HORVATH
DOCUMENT: 2007R027412

PIN: 16-A-016-D-00-031-0
BARRY & LINDA CEKADA
DOCUMENT: 1028/0333

PIN: 16-A-016-D-00-014-0
CHARLES & KAREN HAYES
DOCUMENT: 2014R014239

PIN: 16-A-016-D-00-017-0
MENTOR RIDGE FARMS
ASSOC INC
ACREAGE: 2.2708 (1.5813
EXCLUDING THE AREA WITHIN
RIGHT OF WAY)
DOCUMENT: 0354/0064 d.r.

PIN: 16-A-017-0-00-001-0
MENTOR CITY OF
DOCUMENT: 873/1188 d.r.

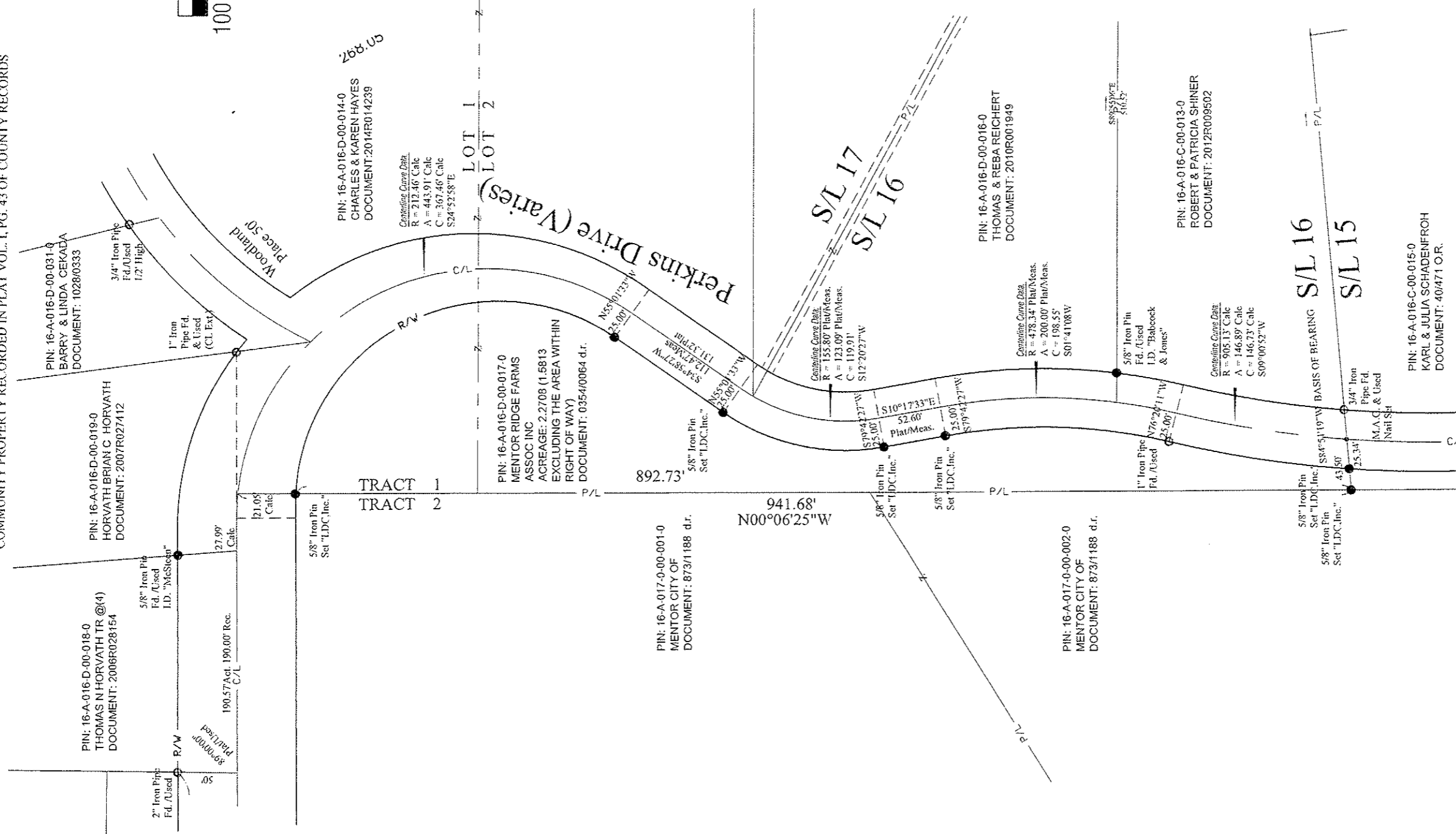
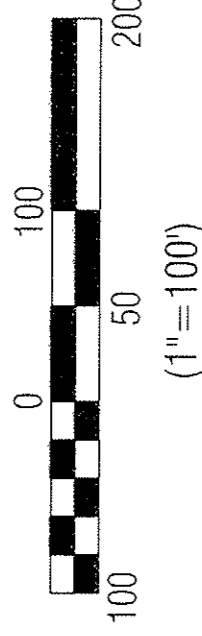
PIN: 16-A-017-0-00-002-0
MENTOR CITY OF
DOCUMENT: 873/1188 d.r.

PIN: 16-A-016-D-00-016-0
THOMAS & REBA REICHERT
DOCUMENT: 2010R001949

PIN: 16-A-016-C-00-013-0
ROBERT & PATRICIA SHINER
DOCUMENT: 2012R009502

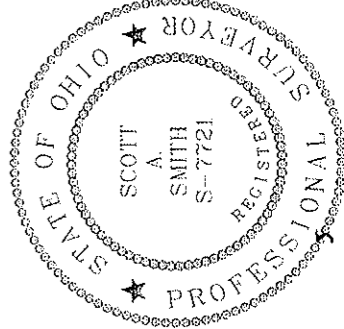
PIN: 16-A-016-C-00-015-0
KARL & JULIA SCHADENFROH
DOCUMENT: 40/471 O.R.

Graphic Scale



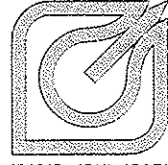
I hereby certify that this plat was prepared from a field survey made under my direct supervision. Monuments were found or set as indicated. Dimensions are expressed in feet and decimal parts thereof. Bearings are to an assumed meridian. Distances shown are in feet and decimal parts thereof. All of which are correct to the best of my knowledge and belief. This plat was prepared in accordance with the provisions of Chapter 4733-37 of the Ohio Administrative Code. This plat was prepared without the benefit of an abstract of title and is subject to any state of facts revealed by a examination of the same.

Scott A. Smith
Scott A. Smith P.S. 7721
APRIL 24, 2017



LAND DESIGN consultants

ENGINEERS · PLANNERS · SURVEYORS
W W W . L D C i n c . n e t



9025 Osborne Drive Mentor, Ohio 44060
TEL: (440) 255-8463 (440) 951-LAND
FAX: (440) 255-9575

LD C, Inc. d.b.a.

MENTR1-1701