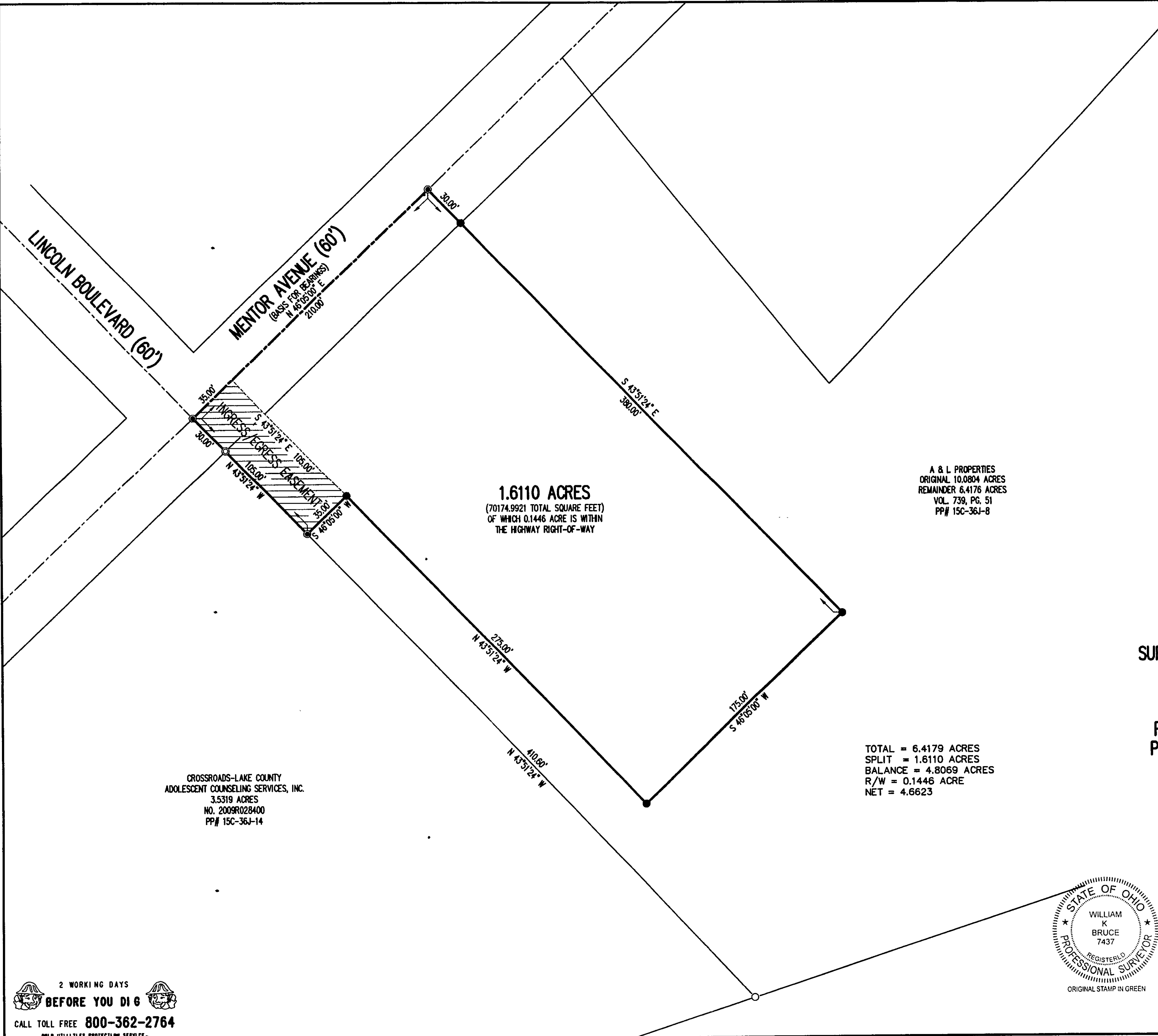


- LEGEND:
- MAG NAIL FOUND
 - MAG NAIL SET
 - 5/8 INCH IRON ROD FOUND
 - 5/8 INCH IRON ROD SET WITH PLASTIC I.D. CAP STAMPED "LSM 7437"



1.6110 ACRES
(70174.9921 TOTAL SQUARE FEET)
OF WHICH 0.1446 ACRE IS WITHIN
THE HIGHWAY RIGHT-OF-WAY

A & L PROPERTIES
ORIGINAL 10.0804 ACRES
REMAINDER 6.4176 ACRES
VOL. 739, PG. 51
PP# 15C-36J-8

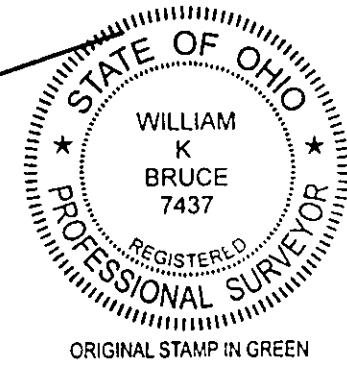
TOTAL = 6.4179 ACRES
SPLIT = 1.6110 ACRES
BALANCE = 4.8069 ACRES
R/W = 0.1446 ACRE
NET = 4.6623

CROSSROADS-LAKE COUNTY
ADOLESCENT COUNSELING SERVICES, INC.
3.5319 ACRES
NO. 2009R028400
PP# 15C-36J-14

**SURVEY OF 1.6110 ACRES OUT OF THE
A & L PROPERTIES
ORIGINAL 10.0804 ACRE TRACT
VOLUME 739, PAGE 51
PERMANENT PARCEL # 15C-36J-8
PART OF LOT NO. 59, TRACT NO. 4
CITY OF PAINESVILLE
PAINESVILLE TOWNSHIP
LAKE COUNTY, OHIO**

I DO HEREBY STATE THAT I HAVE SURVEYED THE PREMISES
AND HAVE PREPARED THIS PLAT IN ACCORDANCE WITH THE
PROVISIONS OF CHAPTER 4733-37 OF THE OHIO ADMINISTRATIVE
CODE. DIMENSIONS SHOWN HEREON ARE EXPRESSED IN FEET AND
DECIMAL PARTS THEREOF.
SURVEYED BY:

William K. Bruce
WILLIAM K. BRUCE
PROFESSIONAL SURVEYOR 7437
FEBRUARY 27, 2012



COPYRIGHT 2012 BY:
LEE SURVEYING & MAPPING CO., INC.
117 North Madriver Street
BELLEFONTAINE, OHIO 43311
(937) 593-7335
WWW.LSMINC.US
surveys@lsminc.us
KSS D0212 52790212 L-5279-2

2 WORKING DAYS
BEFORE YOU DIG
CALL TOLL FREE **800-362-2764**
OHIO UTILITIES PROTECTION SERVICE