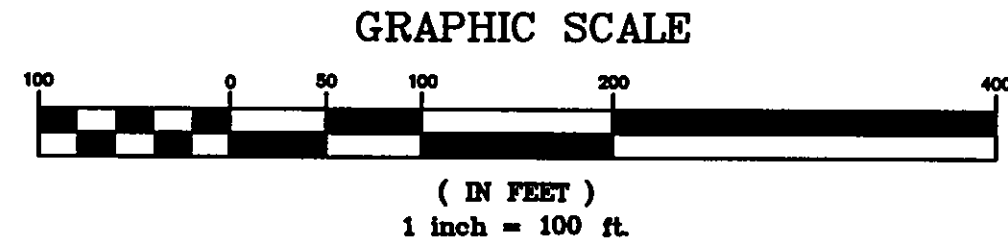


SURVEYOR'S CERTIFICATION

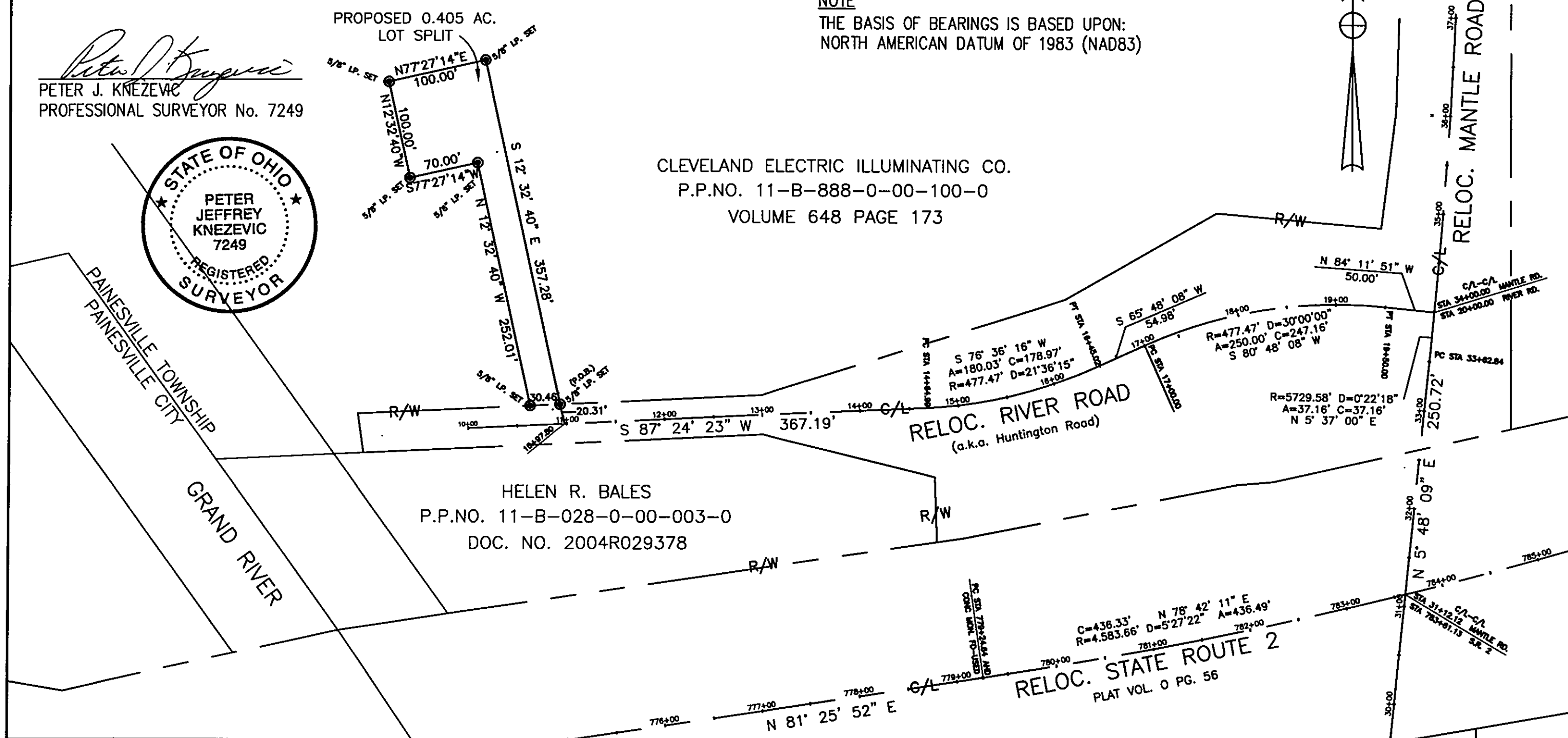
I HEREBY CERTIFY THAT A SURVEY OF THE PREMISES SHOWN ON THIS PLAT WAS MADE UNDER MY PERSONAL DIRECTION IN MAY, 2008 AND THAT THE PLAT IS A CORRECT REPRESENTATION OF THE PREMISES AS DETERMINED BY SAID SURVEY.

SIGNED AT WILLOUGHBY, OHIO THIS 18TH DAY OF NOVEMBER, 2008. 2011

Peter J. Knezevic
 PETER J. KNEZEVIC
 PROFESSIONAL SURVEYOR No. 7249



NOTE
 THE BASIS OF BEARINGS IS BASED UPON:
 NORTH AMERICAN DATUM OF 1983 (NAD83)



CLEVELAND ELECTRIC ILLUMINATING CO.
 P.P.NO. 11-B-888-0-00-100-0
 VOLUME 648 PAGE 173

HELEN R. BALES
 P.P.NO. 11-B-028-0-00-003-0
 DOC. NO. 2004R029378

RELOC. RIVER ROAD
 (a.k.a. Huntington Road)

RELOC. STATE ROUTE 2
 PLAT VOL. 0 PG. 56

RELOC. MANTLE ROAD

H:\2005\05500\SURVEY\05500split.dwg

CT Consultants
 engineers | architects | planners
 35000 Kolar Court Willoughby, Ohio 44094
 440.951.9000 www.ctconsultants.com

REV. NO.	DESCRIPTION	DATE	BY	CHK'D.

EXHIBIT "B"
 PROPOSED LOT SPLIT
 FROM
 CLEVELAND ELECTRIC ILLUMINATING CO.
 TO
 LAKE COUNTY BOARD OF COMMISSIONERS

DATE: 5/28/08
 DRAWN BY: P.J.K.
 CHECKED BY: O.S.
 APPROVED BY: T.P.H.
 F.S. No. PG.

SITUATED IN THE TOWNSHIP OF PAINESVILLE, COUNTY OF LAKE AND STATE OF OHIO AND KNOWN AS BEING PART OF ORIGINAL PAINESVILLE TOWNSHIP LOT NO. 6 TRACT NO.2

SCALE	
HOR.	1" = 100'
VERT.	
CONTRACT No.	
SHEET NO.	OF
1	1