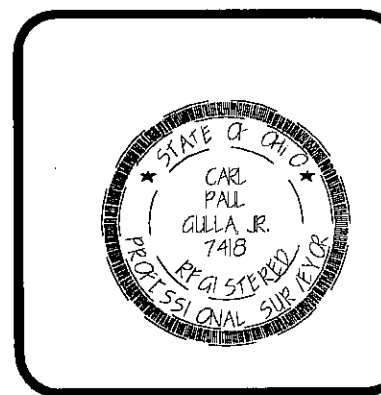


REVISIONS

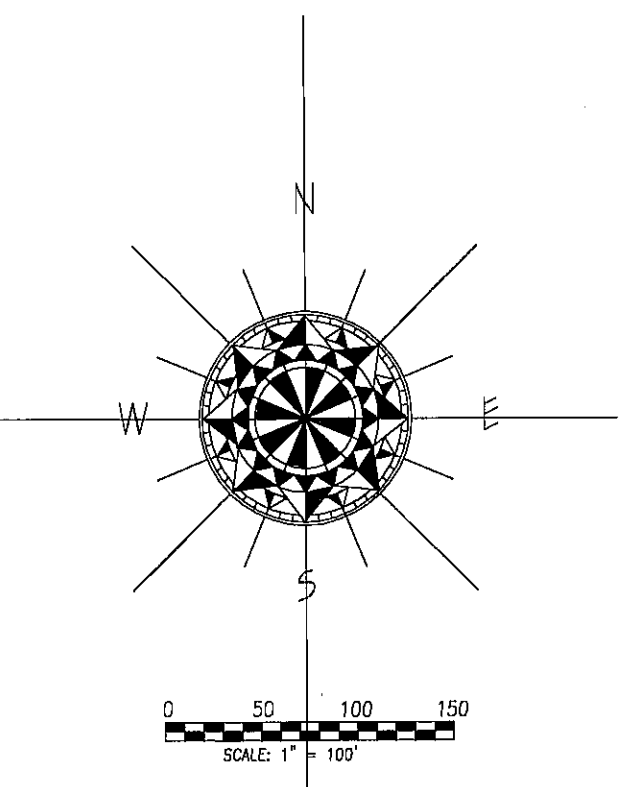
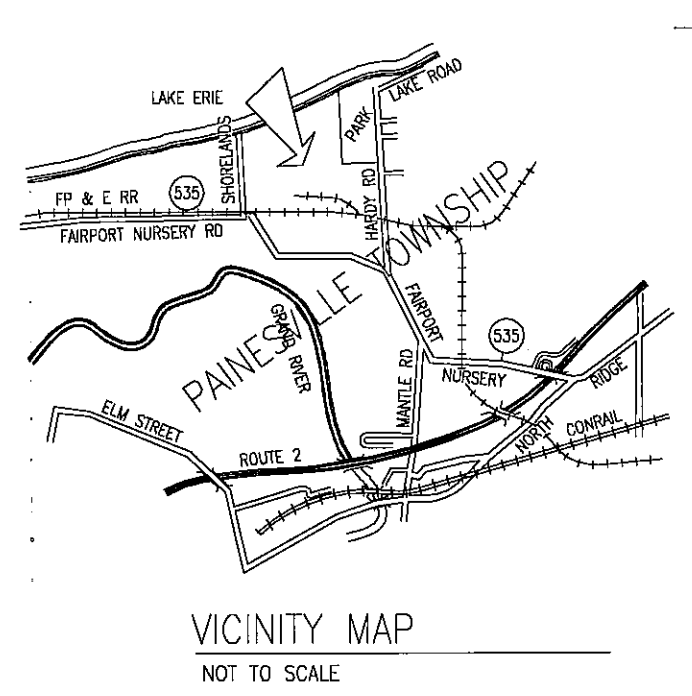
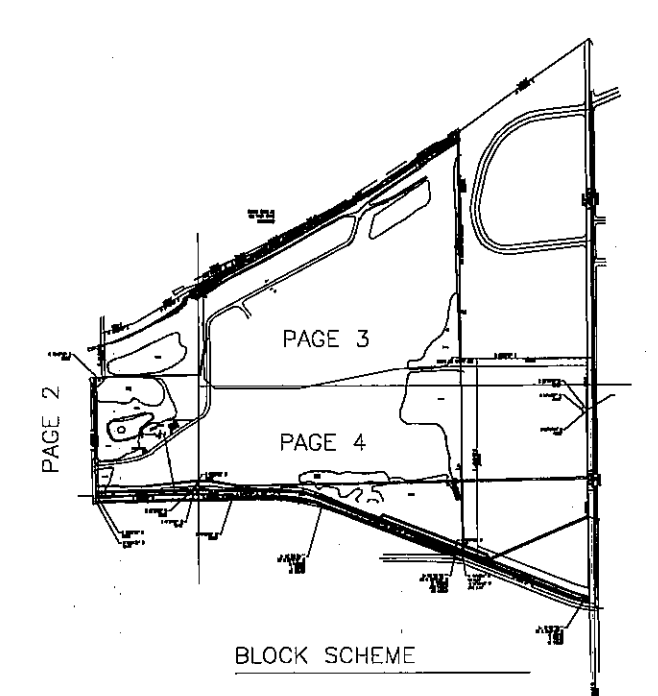
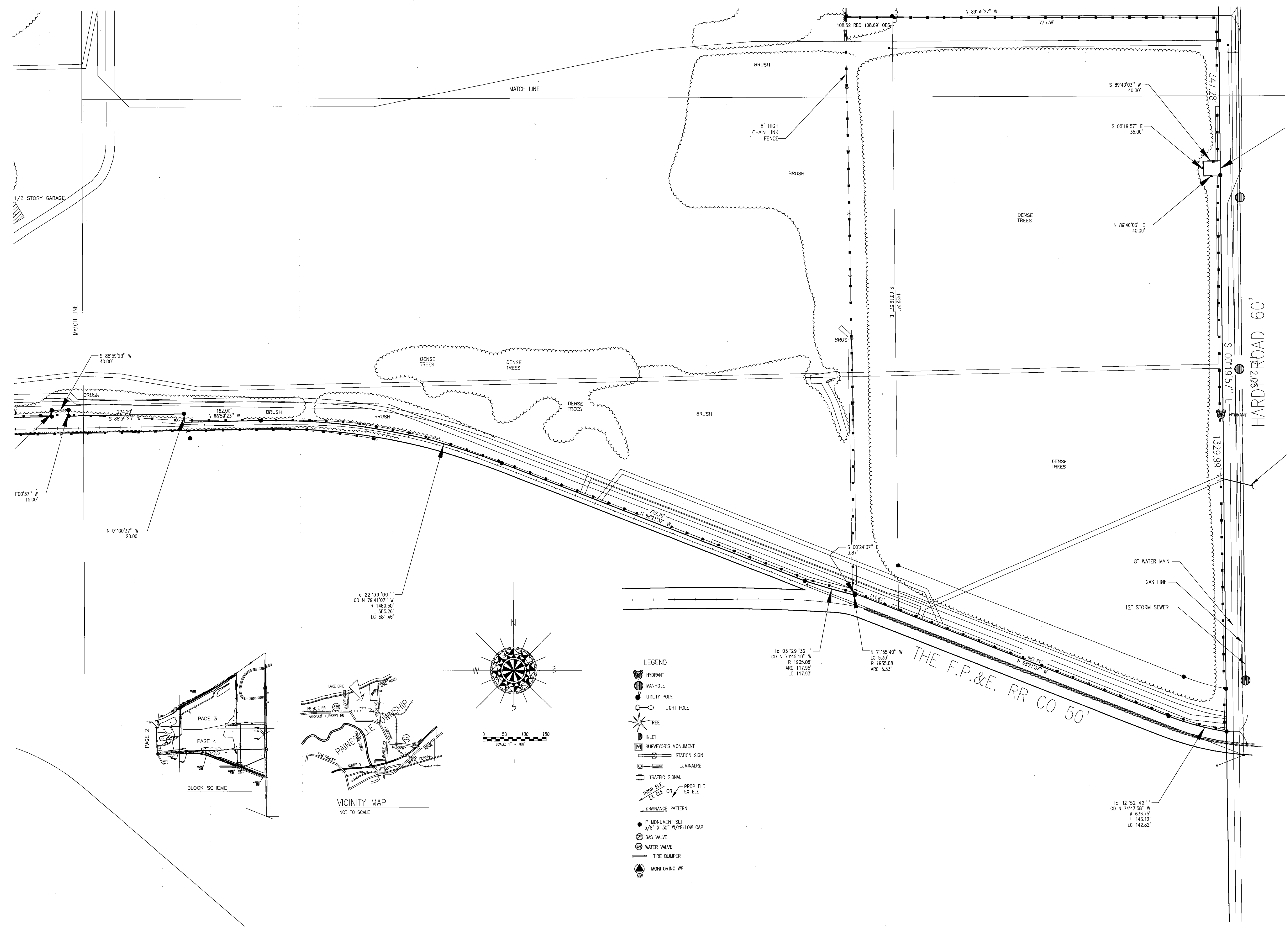
Revision ② 9-29-01  
Correct L&S Dimension  
Correct Rccoway (North  
& Park) Locations

PREPARED BY:  
CUYAHOGA ENGINEERING & SURVEYING SERVICES  
1280 S.O.M. CENTER ROAD, SUITE 233, WAYFELD HEIGHTS, OHIO 44124  
PHONE: (440) 449-2999 FAX: (440) 473-8807

ALTA/ACSM LAND TITLE SURVEY  
NORTH PARK ASH FACILITY, PAINESVILLE, OHIO  
BOUNDARY SURVEY AND EASEMENTS



Job Number: 010831-03  
Folder Number: North Park Ash  
Drawing Name: NORTH\_A.DWG  
Date: September 14, 2001



- LEGEND
- HYDRANT
  - MANHOLE
  - UTILITY POLE
  - LIGHT POLE
  - TREE
  - INLET
  - SURVEYOR'S MONUMENT
  - STATION SIGN
  - LUMINAIRE
  - TRAFFIC SIGNAL
  - ▲ PROP. ELE. OR EX. ELE.
  - ▲ PROP. ELE. OR EX. ELE.
  - DRAINAGE PATTERN
  - IP MONUMENT SET
  - GAS VALVE
  - WATER VALVE
  - TIRE BUMPER
  - MONITORING WELL

IC 03 '29 '32' '1  
CD N 73°45'10" W  
R 1935.08  
ARC 117.29  
LC 117.93'

N 71°55'40" W  
LC 5.33'  
R 1935.08  
ARC 5.33'

IC 12 '52 '42' '1  
CD N 74°47'58" W  
R 636.75'  
L 143.12'  
LC 142.82'

THE F.P.&E. RR CO 50'

HARDY ROAD 60'