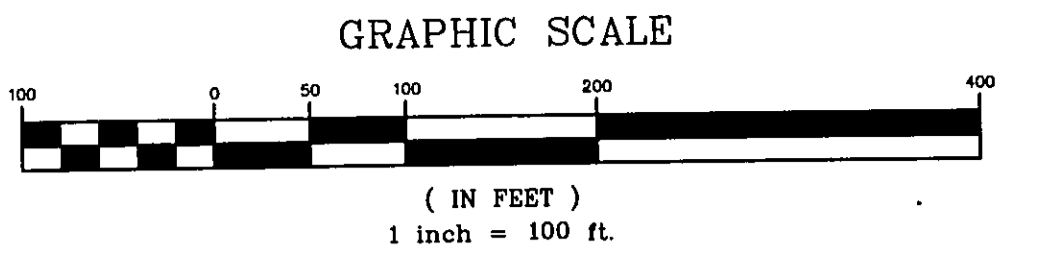
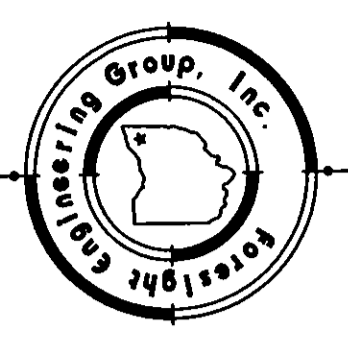
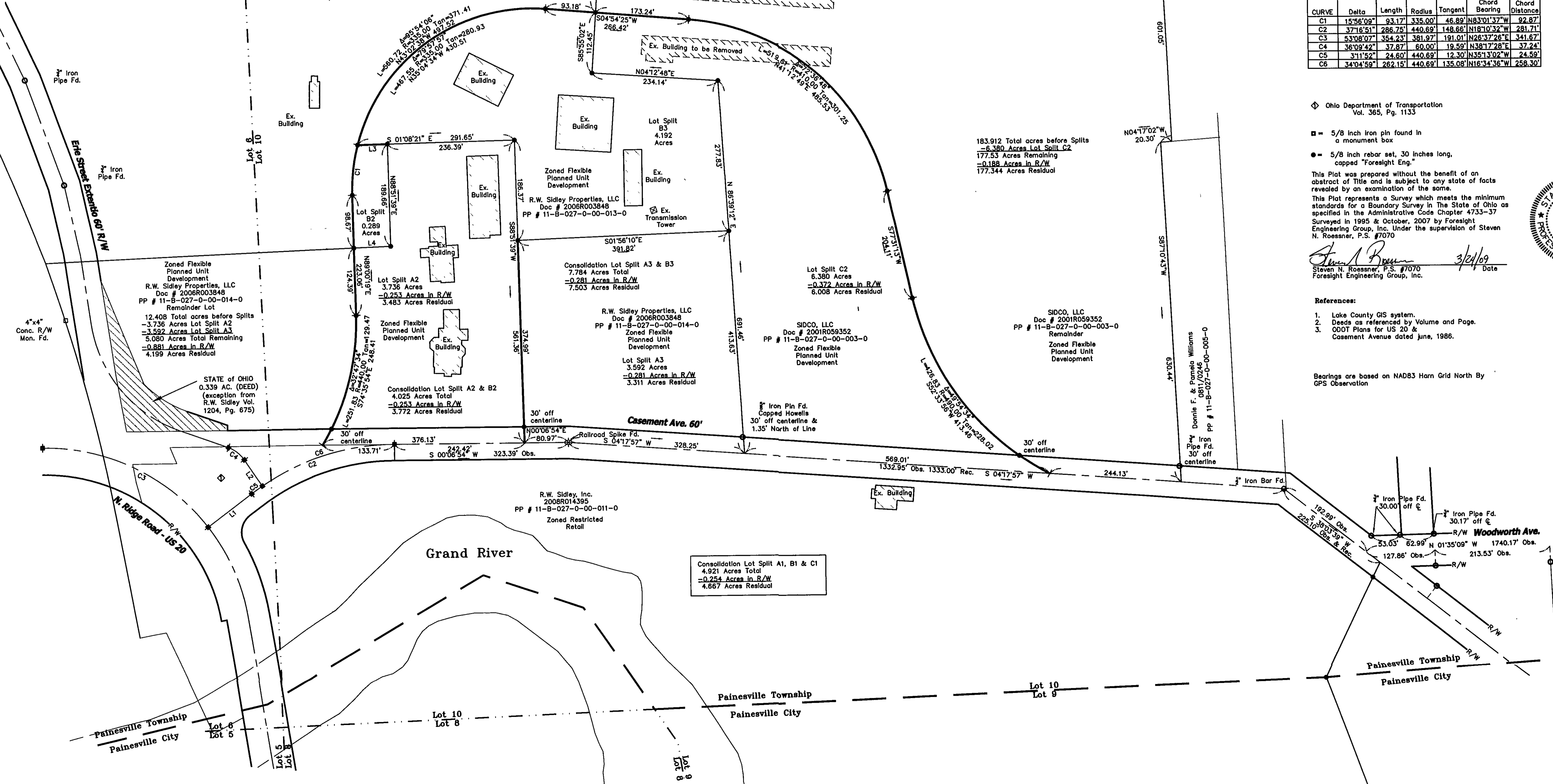


I:\work\proj\10701\Case\Final\Lot_Splits_090305.dwg, 3/23/2009 10:49:56 AM, Copyright Foresight Engineering Group, Inc.



26.623 Total acres before Splits
 -0.289 Acres Lot Split B2
 -4.192 Acres Lot Split B3
 22.142 Acres Total Remaining
 -1.144 Acres in R/W
 20.998 Acres Residual

R.W. Sidley Properties, LLC
 Doc # 2006R003848
 PP # 11-B-027-0-00-013-0
 Remainder Lot
 Zoned Flexible
 Planned Unit
 Development



LINE	LENGTH	BEARING
L1	101.71	N36°52'19"W
L2	59.38	S56°24'00"W
L3	55.26	S01°08'21"E
L4	68.62	S01°56'10"E

CURVE	Delta	Length	Radius	Tangent	Chord Bearing	Chord Distance
C1	15°58'09"	93.17'	335.00'	46.69'	N83°01'37"W	92.87'
C2	37°16'51"	286.75'	440.69'	148.66'	N18°10'32"W	281.71'
C3	53°08'07"	354.23'	381.87'	191.01'	N28°37'26"E	341.67'
C4	38°09'42"	37.87'	60.00'	19.59'	N38°17'28"E	37.24'
C5	31°15'2"	24.60'	440.69'	12.30'	N35°13'02"W	24.59'
C6	34°04'59"	262.15'	440.69'	135.08'	N16°34'36"W	258.30'

Ohio Department of Transportation
 Vol. 365, Pg. 1133

- = 5/8 inch iron pin found in a monument box
- = 5/8 inch rebar set, 30 inches long, capped "Foresight Eng."

This Plat was prepared without the benefit of an abstract of Title and is subject to any state of facts revealed by an examination of the same.
 This Plat represents a Survey which meets the minimum standards for a Boundary Survey in The State of Ohio as specified in the Administrative Code Chapter 4733-37 Surveyed in 1995 & October, 2007 by Foresight Engineering Group, Inc. Under the supervision of Steven N. Roessner, P.S. #7070

Steven N. Roessner 3/24/09
 Steven N. Roessner, P.S. #7070
 Foresight Engineering Group, Inc.



- References:
1. Lake County GIS system.
 2. Deeds as referenced by Volume and Page.
 3. ODOT Plans for US 20 & Casement Avenue dated June, 1986.

Bearings are based on NAD83 Horn Grid North By GPS Observation

Consolidation Lot Split A1, B1 & C1
 4.921 Acres Total
 -0.254 Acres in R/W
 4.667 Acres Residual

Foresight Engineering Group
 Engineers & Surveyors
 440 285-1010
 440 285-1034 fax
 440 285-1034
 Cleveland, Ohio 44122

SCALE: Horiz. 1" = 100'
 Vert. None
 FILE NAME:
 I:\10701\Lot_Splits
 DATE:
 March 23, 2009

REVISIONS:

R. W. Sidley, Inc. / SIDCO Properties
 Casement Area Property
 Painesville Township, Lake County, Ohio
 Lot Split Plat