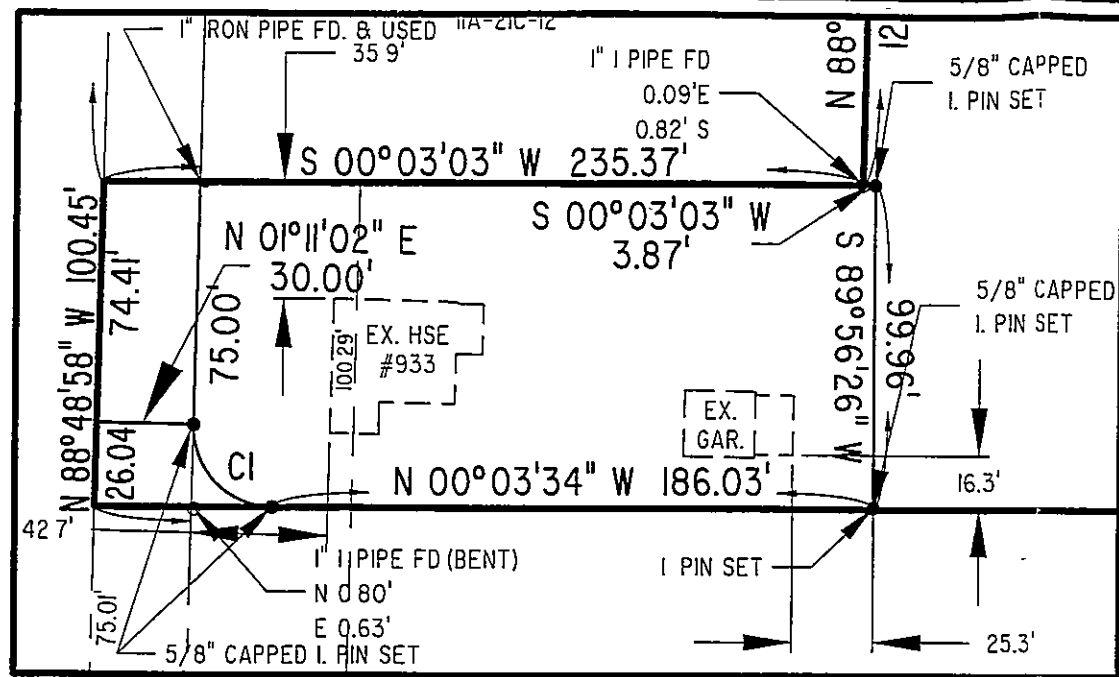


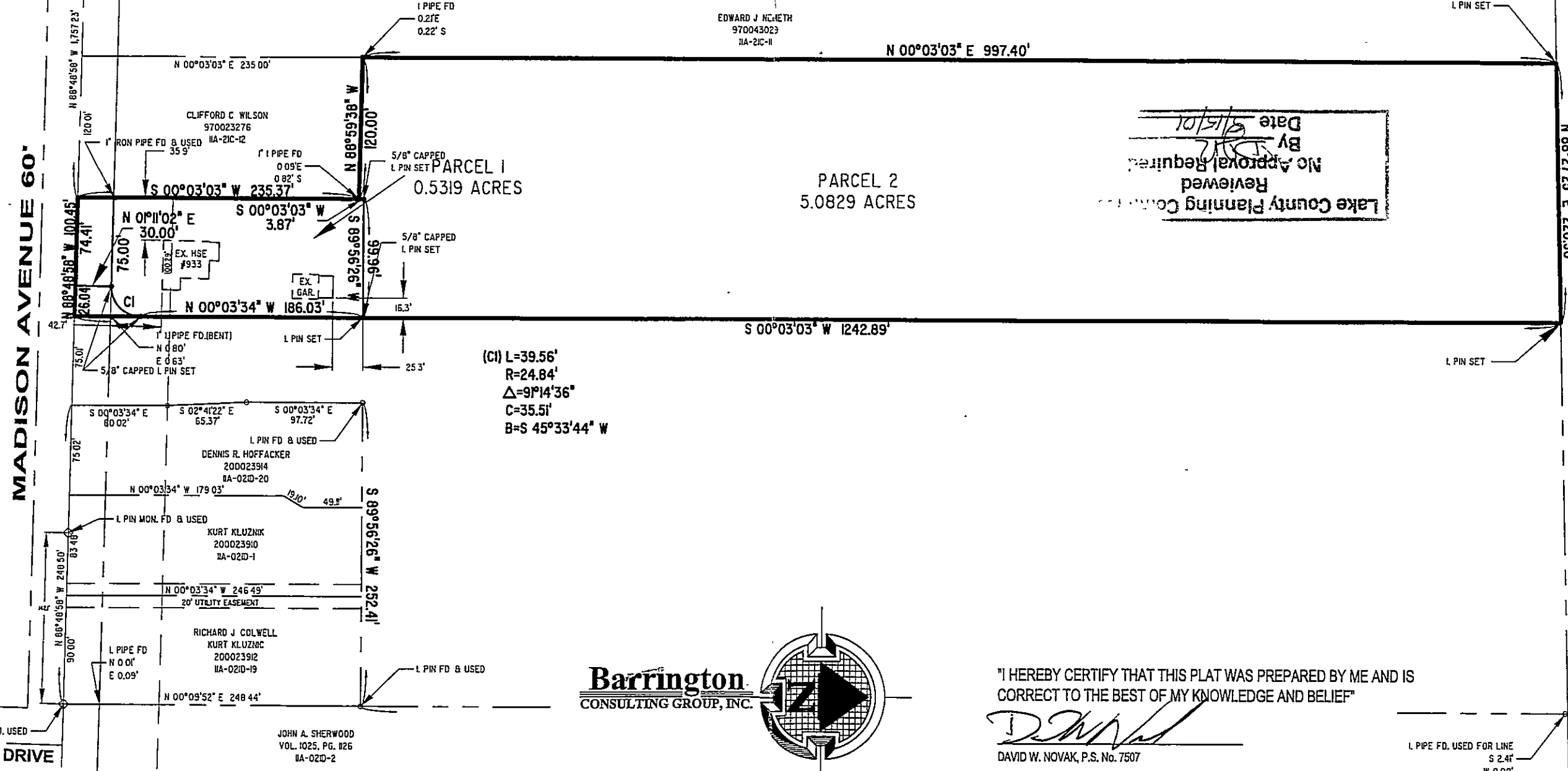
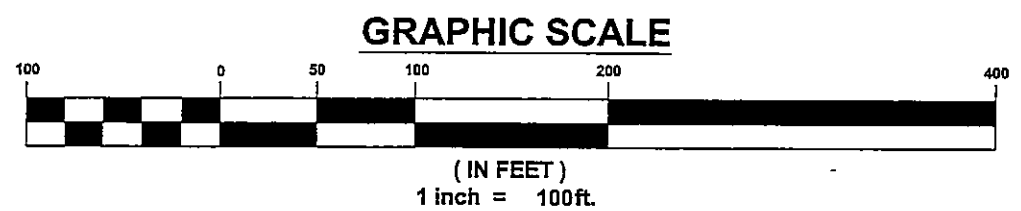
Sub of 11A-21C-13

MADISON AVENUE 60'

RIVERSIDE DRIVE  
MEADOWS DRIVE



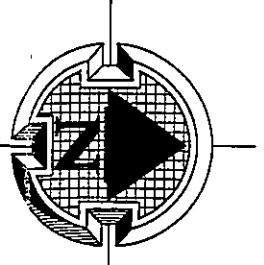
PARCEL 1 DETAIL



Lake County Planning Commission  
Reviewed  
No Approval Required  
By *[Signature]*  
Date 5/15/01

(CI) L=39.56'  
R=24.84'  
Δ=9°14'36"  
C=35.51'  
B=S 45°33'44" W

**Barrington**  
CONSULTING GROUP, INC.



"I HEREBY CERTIFY THAT THIS PLAT WAS PREPARED BY ME AND IS CORRECT TO THE BEST OF MY KNOWLEDGE AND BELIEF"

*[Signature]*  
DAVID W. NOVAK, P.S. No. 7507  
CERT-7.DWG

L PIPE FD. USED FOR LINE  
S 2.41'  
W 0.00'

REVISIONS	BY
REVISED PARCEL 1	DWN
REVISED FOR COUNTY REVIEW	DWN

**Barrington**  
CONSULTING GROUP, INC.  
38342 WESTERN PARKWAY, SUITE 10  
WILLOUGHBY, OHIO 44094  
PHONE 440.946.1761 FAX 440.918.0486



**LOT SPLIT**  
933 MADISON AVENUE  
PAINESVILLE TWP., OH 44077 (11A-021C-00-013-0)  
**LITTLE MOUNTAIN HOMES, INC.**

DRAWN	D W NOVAK
CHECKED	DWN
DATE	JAN 22 2001
SCALE	1" = 100'
JOB NO.	01002
SHEET	