

# ALTA / NSPS LAND TITLE SURVEY

OF  
751-753 LIBERTY STREET  
PARCEL NO. 11A-007-B-00-018-0  
PARCEL NO. 11A-007-B-00-019-0  
PARCEL NO. 11A-007-B-00-020-0

## PROPERTY AREA

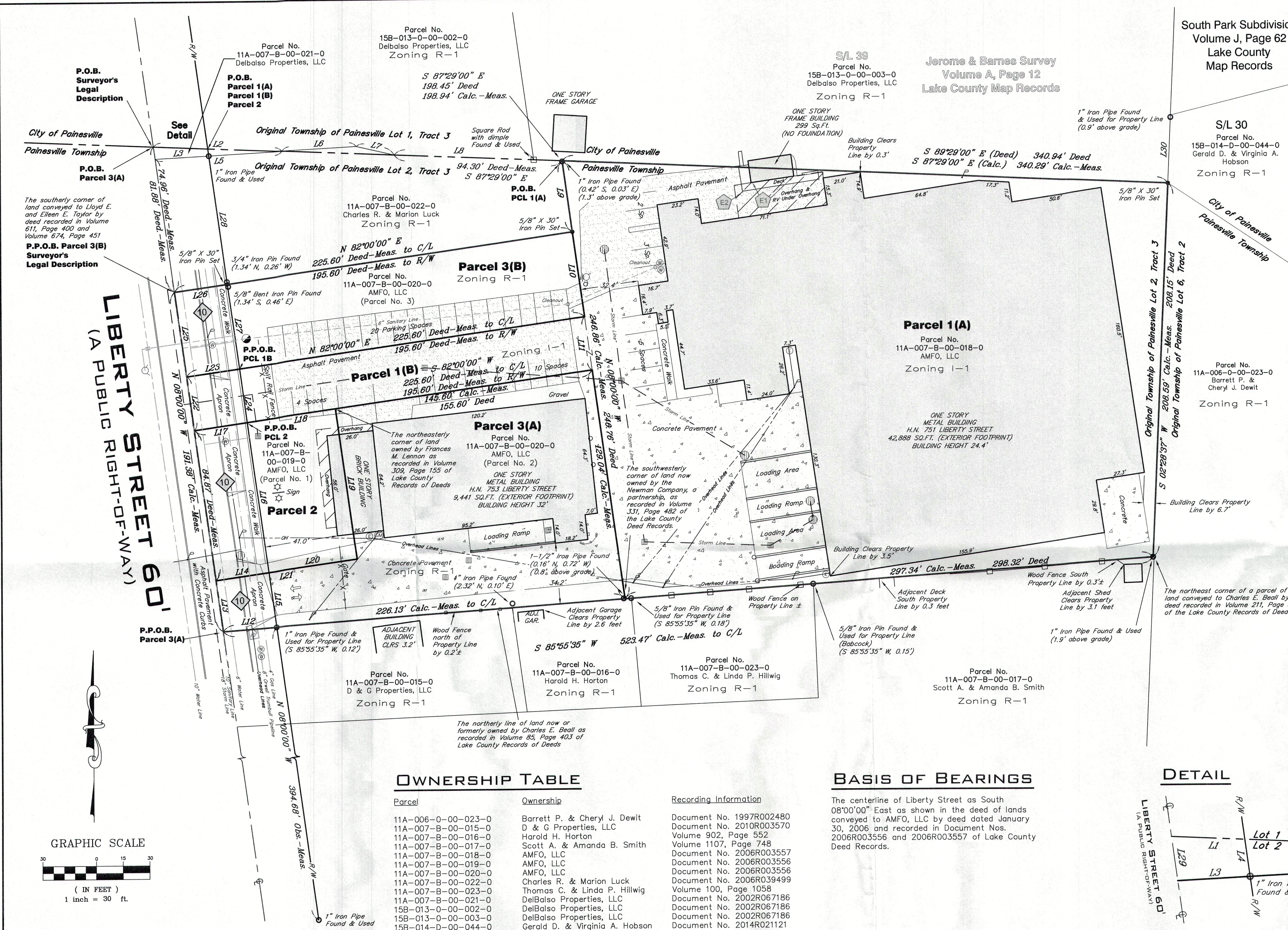
Parcel No.	Sq.Ft.	Sq.Ft.	Acres
Parcel No. 1(A)	72,106	1,6553	Acres
Parcel No. 1(B)	6,768	0.1554	Acres
Parcel No. 2	6,790	0.1559	Acres
Parcel No. 3(A)	20,576	0.4724	Acres
Parcel No. 3(B)	10,788	0.2477	Acres
<b>Total</b>	<b>117,028</b>	<b>2.6867</b>	<b>Acres</b>
Within R/W of Liberty Street	5,772	0.1325	Acres
<b>Net</b>	<b>111,256</b>	<b>2.5542</b>	<b>Acres</b>

## APPARENT ENCROACHMENTS

- E1 Adjacent building (NO FOUNDATION) extends south of subject's property line by 3.9 feet and 8.1 feet.
- E2 Adjacent Wood Deck (NO FOUNDATION) extends south of subject's property line.

## LINE TABLE

Line	Length	Bearing
L1	30.51' C.-M.	S87°29'00"E
L2	72.21' Obs.	S87°29'00"E
L3	30.12' C.-M.	N87°02'20"E
L4	4.00' C.-M.	S08°00'00"E
L5	71.23' D.-M.	N87°02'20"E
L6	41.78' D.-M.	N87°02'20"E
L7	21.77' D.-M.	S76°56'19"E
L8	78.41' Obs.	N87°29'00"W
L9	40.00' D.-M.	N08°00'00"W
L10	47.82' C.-M. 49.17' D.	S08°00'00"E
L11	30.00' D.-M.	S08°00'00"E
L12	30.07' C.-M.	N85°55'35"E
L13	28.69' C.-M.	S08°00'00"E
L14	30.00' D.-M.	N82°00'00"E
L15	30.75' C.-M.	S08°00'00"E
L16	84.87' D.-M.	N08°00'00"W
L17	30.00' D.-M.	N82°00'00"E
L18	50.00' D.-M.	N82°00'00"E
L19	84.87' D.-M.	S08°00'00"E
L20	50.00' D.-M.	N82°00'00"E
L21	80.00' D.-M.	S82°00'00"W
L22	30.00' R.-M.	S08°00'00"E
L23	30.00' R.-M.	N82°00'00"E
L24	30.00' R.-M.	N08°00'00"W
L25	47.82' C.-M. 49.17' R.	N08°00'00"W
L26	30.00' R.-M.	N82°00'00"E
L27	47.82' C.-M.	S08°00'00"E
L28	72.31' C.-M.	S08°00'00"E
L29	6.92' D.-M.	S08°00'00"E
L30	36.71' C.-M. 37.83' R.	N02°28'37"E



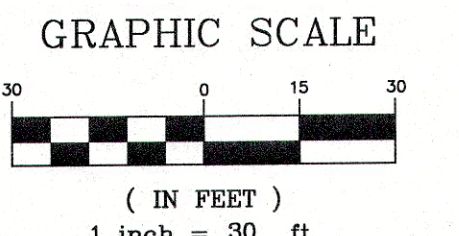
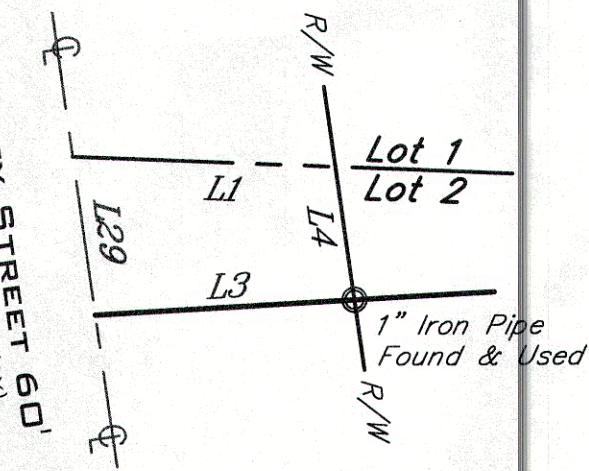
## OWNERSHIP TABLE

Parcel	Ownership	Recording Information
11A-006-0-00-023-0	Barrett P. & Cheryl J. Dewit	Document No. 1997R002480
11A-007-B-00-015-0	D & G Properties, LLC	Document No. 2010R003570
11A-007-B-00-016-0	Harold H. Horton	Volume 902, Page 552
11A-007-B-00-017-0	Scott A. & Amanda B. Smith	Volume 1107, Page 748
11A-007-B-00-018-0	AMFO, LLC	Document No. 2006R003557
11A-007-B-00-019-0	AMFO, LLC	Document No. 2006R003556
11A-007-B-00-020-0	AMFO, LLC	Document No. 2006R003556
11A-007-B-00-022-0	Charles R. & Marion Luck	Document No. 2006R039499
11A-007-B-00-023-0	Thomas C. & Linda P. Hillwig	Volume 100, Page 1058
11A-007-B-00-021-0	DelBalso Properties, LLC	Document No. 2002R067186
15B-013-0-00-002-0	DelBalso Properties, LLC	Document No. 2002R067186
15B-013-0-00-003-0	DelBalso Properties, LLC	Document No. 2002R067186
15B-014-D-00-044-0	Gerald D. & Virginia A. Hobson	Document No. 2014R021121

## BASIS OF BEARINGS

The centerline of Liberty Street as South 08°00'00" East as shown in the deed of lands conveyed to AMFO, LLC by deed dated January 30, 2006 and recorded in Document Nos. 2006R003556 and 2006R003557 of Lake County Deed Records.

## DETAIL



## LEGEND

- M = Monument Box Found
- = Iron Pin or Pipe Found
- = 5/8"x30" Iron Pin Set
- ⊙ = Drill Hole Set / Found
- ⊕ = P.K. Nail Set / Found
- ⊙ = Gas Meter
- ⊙ = Gas Valve / Shut Off
- ⊕ = Utility Pole
- ⊕ = Light Pole
- ⊕ = Traffic Pole
- ⊕ = Guy Anchor & Line
- ⊕ = Electric Meter
- ⊕ = Electric Manhole
- ⊕ = Electric Box
- ⊕ = Transformer
- ⊕ = Air Conditioning Unit
- ⊕ = Hydrant
- ⊕ = Stand Pipe
- ⊕ = Water Service Valve
- ⊕ = Water Line Valve
- ⊕ = Water Meter
- ⊕ = Water Manhole
- ⊕ = Sanitary Manhole
- ⊕ = Clean Out
- ⊕ = Unknown Manhole
- ⊕ = Storm Manhole
- ⊕ = Catch Basin
- ⊕ = Trench Drain
- ⊕ = Telephone Box / Manhole
- ⊕ = Cable Box / Manhole
- ⊕ = Traffic Control Box
- ⊕ = Traffic Flow/Access
- ⊕ = Sign Post
- ⊕ = Bollard
- ⊕ = Handicap Parking
- ⊕ = Centerline
- ⊕ = Property Line
- ⊕ = Easement No.
- ⊕ = Encroachments
- ⊕ = Parcel / Sublot line
- ⊕ = Original Parcel / Sublot Line
- ⊕ = Centerline
- ⊕ = Subject Property Line
- ⊕ = Right-of-way Line
- ⊕ = Easement Line
- ⊕ = Overhead Utility Line
- ⊕ = Wood Fence Line
- ⊕ = Chain Link Fence
- ⊕ = Woven Fence Line
- ⊕ = Water Line
- ⊕ = Gas Line
- ⊕ = Overhead Lines
- ⊕ = Electric Line
- ⊕ = Sanitary Line
- ⊕ = Storm Line
- ⊕ = Telephone



October 18, 2016  
EDWARD B. DUDLEY, III Date  
P.S. No. 6747

Note: ● Denotes 5/8"x30" iron pins set and capped "Riverstone Company-PS6747-PS8646"



LAND SURVEYING - ENGINEERING - DESIGN  
3800 LAKESIDE AVENUE - SUITE 100  
CLEVELAND - OHIO - 44114  
PHONE: (216) 491-2000 FAX: (216) 491-9640  
WWW.RIVERSTONESURVEY.COM