

PLAT OF SURVEY

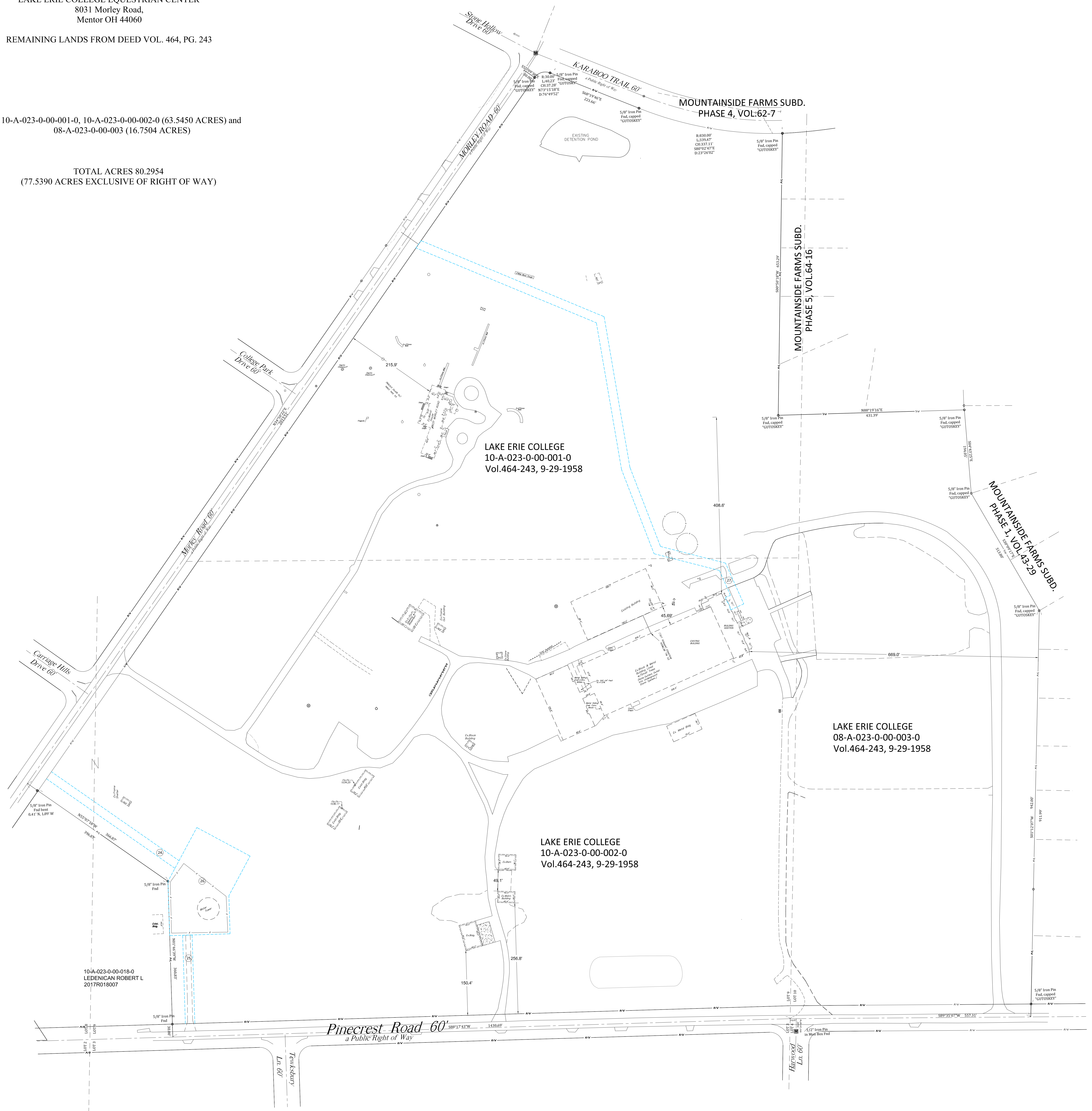
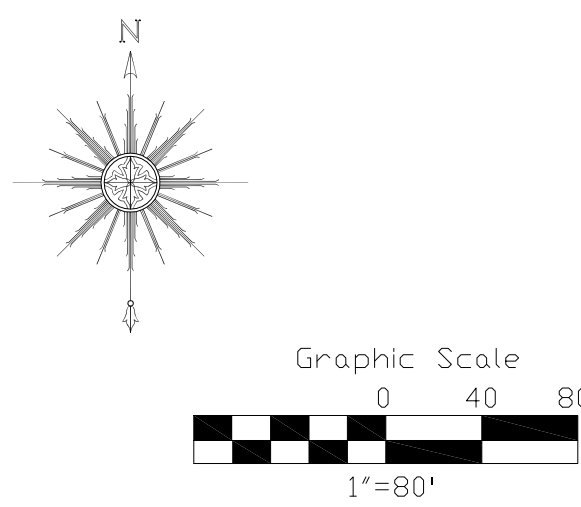
In the Township of Concord, County of Lake, and State of Ohio,
and known as being parts of Lots 8, 9, and 10, Tract 4.

LAKE ERIE COLLEGE EQUESTRIAN CENTER
8031 Morley Road,
Mentor OH 44060

REMAINING LANDS FROM DEED VOL. 464, PG. 243

10-A-023-0-00-001-0, 10-A-023-0-00-002-0 (63.5450 ACRES) and
08-A-023-0-00-003 (16.7504 ACRES)

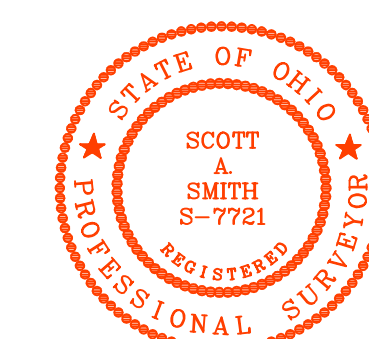
TOTAL ACRES 80.2954
(77.5390 ACRES EXCLUSIVE OF RIGHT OF WAY)



24. Water Utility Access Easement to Aqua Ohio, Inc., an Ohio corporation, as recorded at Document No. 2005R040367 of the Official Records of Lake County, Ohio.
25. Water Utility Access Easement to Aqua Ohio, Inc., an Ohio corporation, as recorded at Document No. 2005R040368 of the Official Records of Lake County, Ohio.
26. Lease Agreement to Aqua Ohio, Inc., an Ohio corporation, recorded at Document No. 2005R040370 of the Official Records of Lake County, Ohio.
27. Utility Easement Option to Aqua Ohio, Inc., an Ohio corporation, for the purposes of water mains, service connections, hydrants, et al, as recorded at Document No. 2008R017561 of the Official Records of Lake County, Ohio.

REFERENCE SURVEYS USED
Survey by Gutoskey & Associates Inc. DECEMBER 2001.
On file with Lake County Tax Map Department.

I hereby certify that this plat was prepared from a field survey made under my direct supervision. Monuments were found or set as indicated. Dimensions are expressed in feet and decimal parts thereof. Bearings refer to OHIO North NAD 83. All of which are correct to the best of my knowledge and belief. This plat was prepared in accordance with the provisions of Chapter 4733-37 of the Ohio Administrative Code.



Date: 20191016

Scott A. Smith
Scott A. Smith P.S. 7721