

1:51:32 PM 4/19/2007

1:40:50 PM 4/19/2007 Snyder, Franklin

NOTE:
BASIS FOR BEARINGS IS GRID BASED ON THE OHIO STATE PLANE,
NORTH ZONE, NAD83. ALL DISTANCES HAVE BEEN SCALED TO GROUND.

REFERENCES INCLUDE:
LAKE COUNTY DEEDS AND PLAT RECORDS FOR 18TH CENTURY VILLAGE
SUBDIVISION IN VOL. 50-PG. 22, AND MOUNT ROYAL SUBDIVISION NO. 3
IN VOL. 31, PG.9.

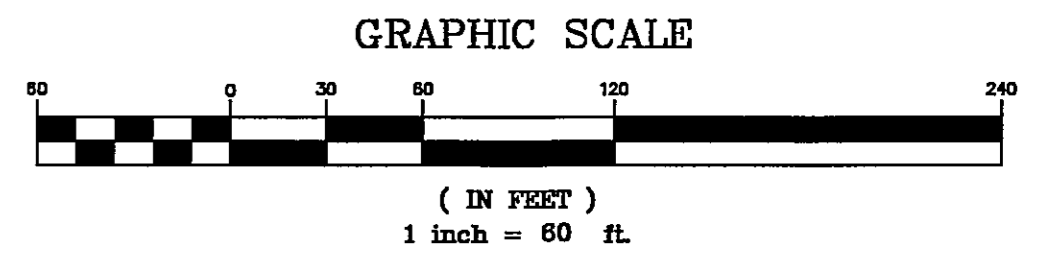
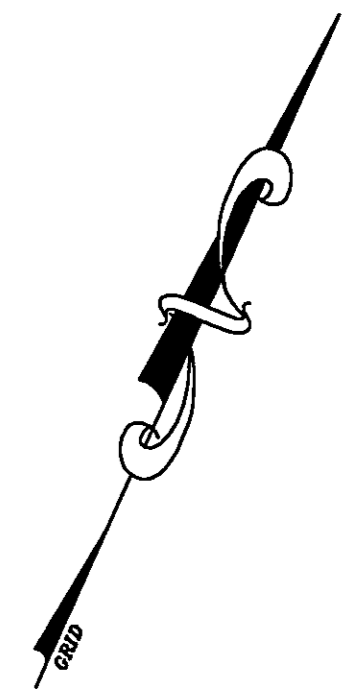
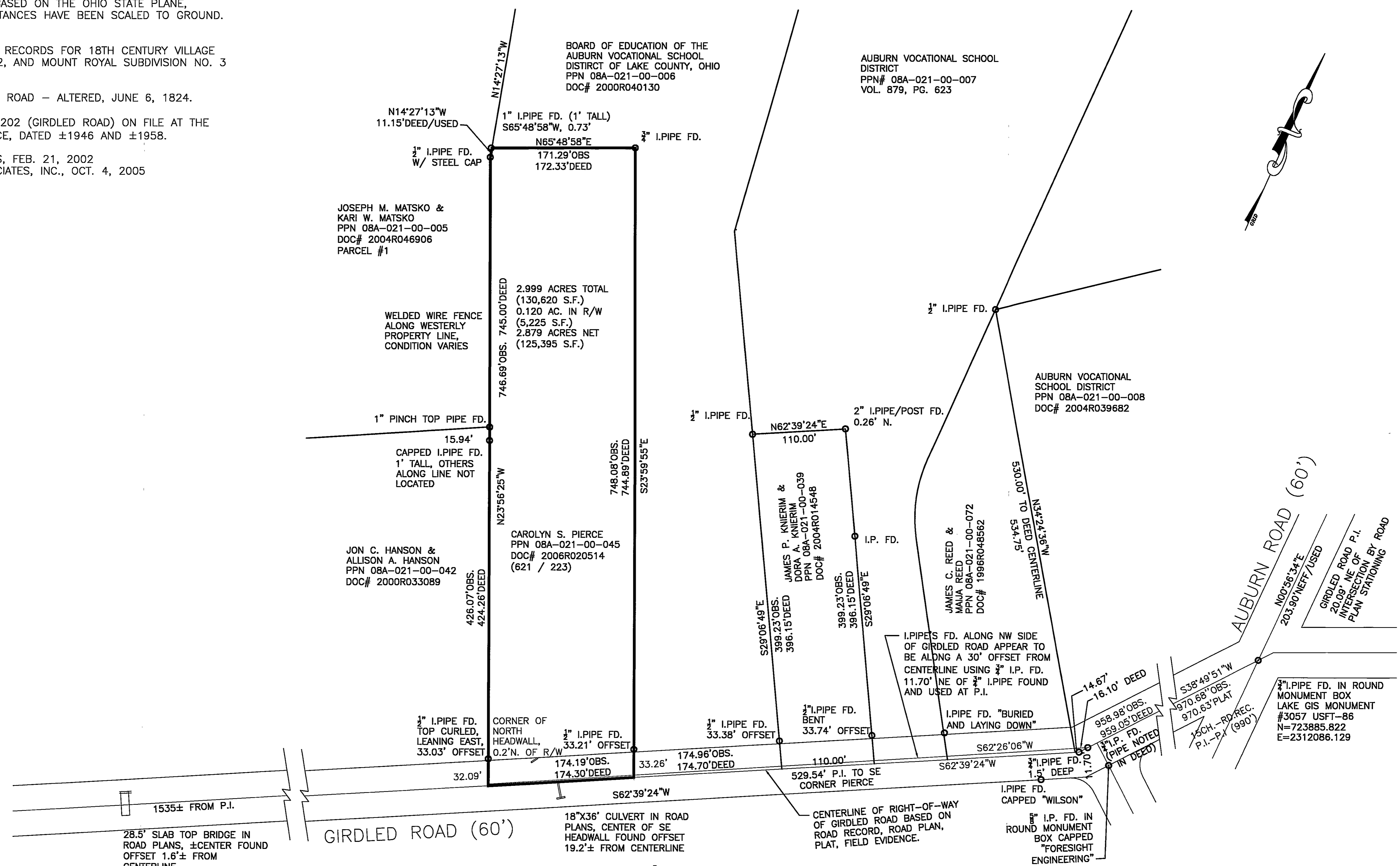
ROAD RECORD OF OLD GIRDLER ROAD - ALTERED, JUNE 6, 1824.

PLANS FOR COUNTY ROAD NO. 202 (GIRDLER ROAD) ON FILE AT THE
LAKE COUNTY ENGINEER'S OFFICE, DATED ±1946 AND ±1958.

SURVEY BY NEFF & ASSOCIATES, FEB. 21, 2002
SURVEY BY GUTOSKEY & ASSOCIATES, INC., OCT. 4, 2005



Franklin D. Snyder, P.S.
April 19, 2007



NO.	REVISIONS	DATE	BY	CHK.



BURGESS & NIPLE

**BOUNDARY SURVEY
OF LANDS OF CAROLYN S. PIERCE FOR
THE AUBURN CAREER CENTER**

JOB NO.	
DESIGNED BY:	
DRAWN BY:	FDS
CHECKED BY:	MDJ
APPROVED BY:	
DATE:	APRIL 19, 2007

**PART OF LOT 14, TRACT 3
CONNECTICUT WESTERN RESERVE
CONCORD TOWNSHIP, LAKE COUNTY, OHIO**

SCALE:	
1" = 60' full	
1" = 120' half	
SHEET NO.	OF
1	1