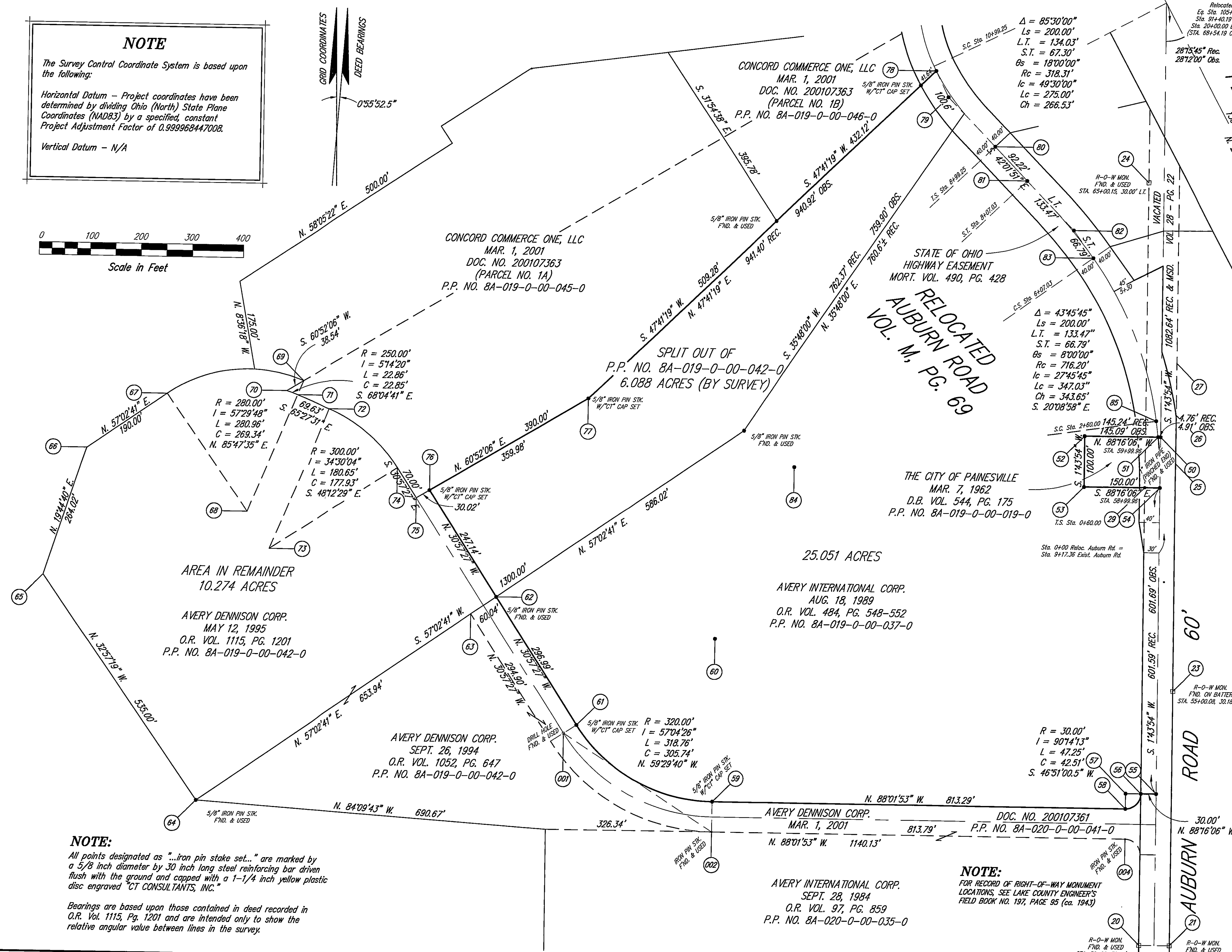
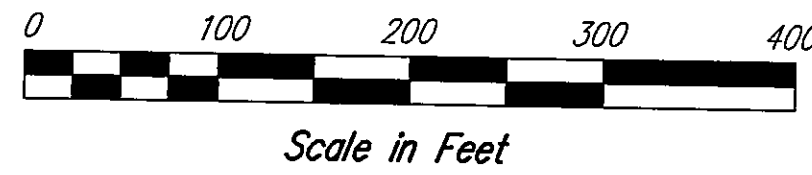
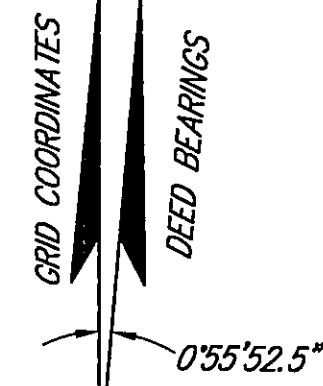


NOTE

The Survey Control Coordinate System is based upon the following:

Horizontal Datum - Project coordinates have been determined by dividing Ohio (North) State Plane Coordinates (NAD83) by a specified, constant Project Adjustment Factor of 0.999968447008.

Vertical Datum - N/A



RELOCATED S.R. 44
PLAT VOL. N, P.G. 97

SURVEY CONTROL COORDINATES

NO.	NORTH	EAST
001	729304.5866	2310561.3210
002	729109.5019	2310851.6444
003	730612.6474	2310500.0542
004	729094.7722	2311665.1124
18	727088.7850	2312834.4029
19	729526.3762	2312377.0668
20	728886.1441	2311692.2342
21	728885.3059	2311752.2284
22	728559.1519	2311687.6853
23	729385.3336	2311759.3986
24	730386.1501	2311713.1905
25	729833.5464	2311765.1894
26	729928.6096	2311766.3260
27	730030.8286	2311767.8286
28	730205.8624	2311710.1659
29	729786.0128	2311704.8037
50	729885.5839	2311736.2001
51	729885.6525	2311731.2905
52	729887.6793	2311586.2148
53	729787.6891	2311584.8178
54	729785.5937	2311734.8032
55	729183.9669	2311726.3980
56	729184.3860	2311696.4009
57	729184.8051	2311666.4038
58	729154.8100	2311665.8607
59	729169.5341	2310852.7040
60	729489.4817	2310858.4974
61	729320.4347	2310586.7933
62	729572.6017	2310429.9019
63	729539.1283	2310380.0630
64	729174.5222	2309837.1961
65	729618.6477	2309538.9076
66	729868.5646	2309624.0505
67	729974.4991	2309781.7778
68	729742.0590	2309937.8917
69	729998.6207	2310050.0349
70	729979.3174	2310016.6853
71	729971.1319	2310038.0195
72	729943.2443	2310101.8209
73	729668.3568	2309981.6676
74	729826.8383	2310236.3902
75	729767.4030	2310273.3692
76	729782.4391	2310299.3467
77	729962.7738	2310610.9048
78	730607.3851	2311296.3233
79	730555.5754	2311320.3055
80	730457.4916	2311411.6489
81	730390.0046	2311474.4981
82	730292.3306	2311565.4598
83	730237.5941	2311603.7328
84	729827.1870	2311016.7844
85	729916.9455	2311727.3376
90	729899.0760	2310916.8200
93	729962.7380	2310611.3880

NOTE:

All points designated as "...iron pin stake..." are marked by a 5/8 inch diameter by 30 inch long steel reinforcing bar driven flush with the ground and capped with a 1-1/4 inch yellow plastic disc engraved "CT CONSULTANTS, INC."

Bearings are based upon those contained in deed recorded in O.R. Vol. 1115, Pg. 1201 and are intended only to show the relative angular value between lines in the survey.

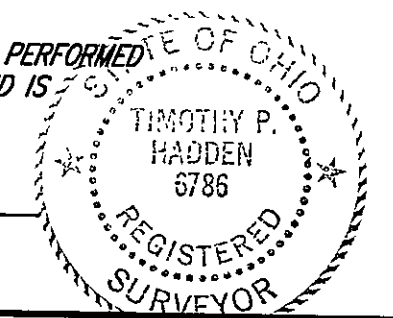
NOTE:

FOR RECORD OF RIGHT-OF-WAY MONUMENT LOCATIONS, SEE LAKE COUNTY ENGINEER'S FIELD BOOK NO. 197, PAGE 95 (ca. 1943)

CERTIFICATION

THIS PLAT WAS PREPARED BY ME FROM THE NOTES OF A SURVEY PERFORMED UNDER MY SUPERVISION IN AUGUST, 1988 AND OCTOBER, 2003 AND IS CORRECT TO THE BEST OF MY KNOWLEDGE AND BELIEF.

Timothy P. Hadden 12/12/03
TIMOTHY P. HADDEN
OHIO P.S. NO. 6786



DATE: 10/28/2003

DRAWN BY: T.P.H.

CHECKED BY:

APPROVED BY: [Signature]

F.B. No. 1222 PG. 101

PLAT OF SURVEY AND LOT SPLIT OF LAND OF AVERY DENNISON CORPORATION BEING A PART OF ORIGINAL LOT 10, TRACT 3 CONCORD TOWNSHIP - LAKE COUNTY - OHIO

SCALE	
HOR.	1" = 100'
VERT.	
CONTRACT NO.	
03191	
SHEET NO.	OF
1	1

CT Consultants
engineers | architects | planners
35000 Kaiser Court Willoughby, Ohio 44094
440.951.9000 www.ctconsultants.com

REV. NO.	DESCRIPTION	DATE	BY	CHK'D.