

DEVONSHIRE SUBDIVISION
VOL. 22 - PG. 4

DANIEL J. & CHERYL L. GILLESPIE
VOL. 943 - PG. 278
8A-18A-16

S/L No. 13
HENRY M. & ELIZABETH A. COVETTA
No. 1997R030061
8A-15J-13

TINA KAVAL &
MICHAEL J. WOODIN
No. 2006R016958
8A-18A-15

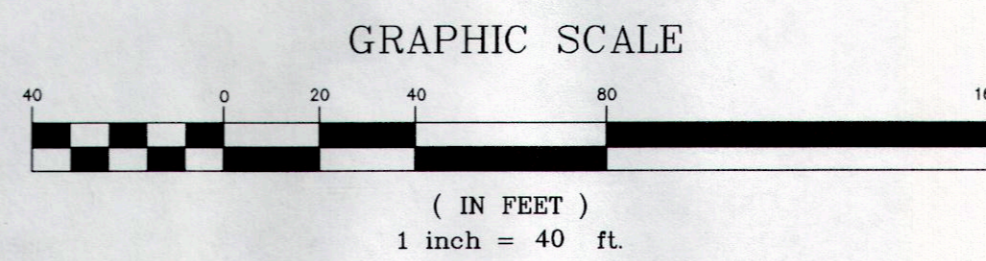
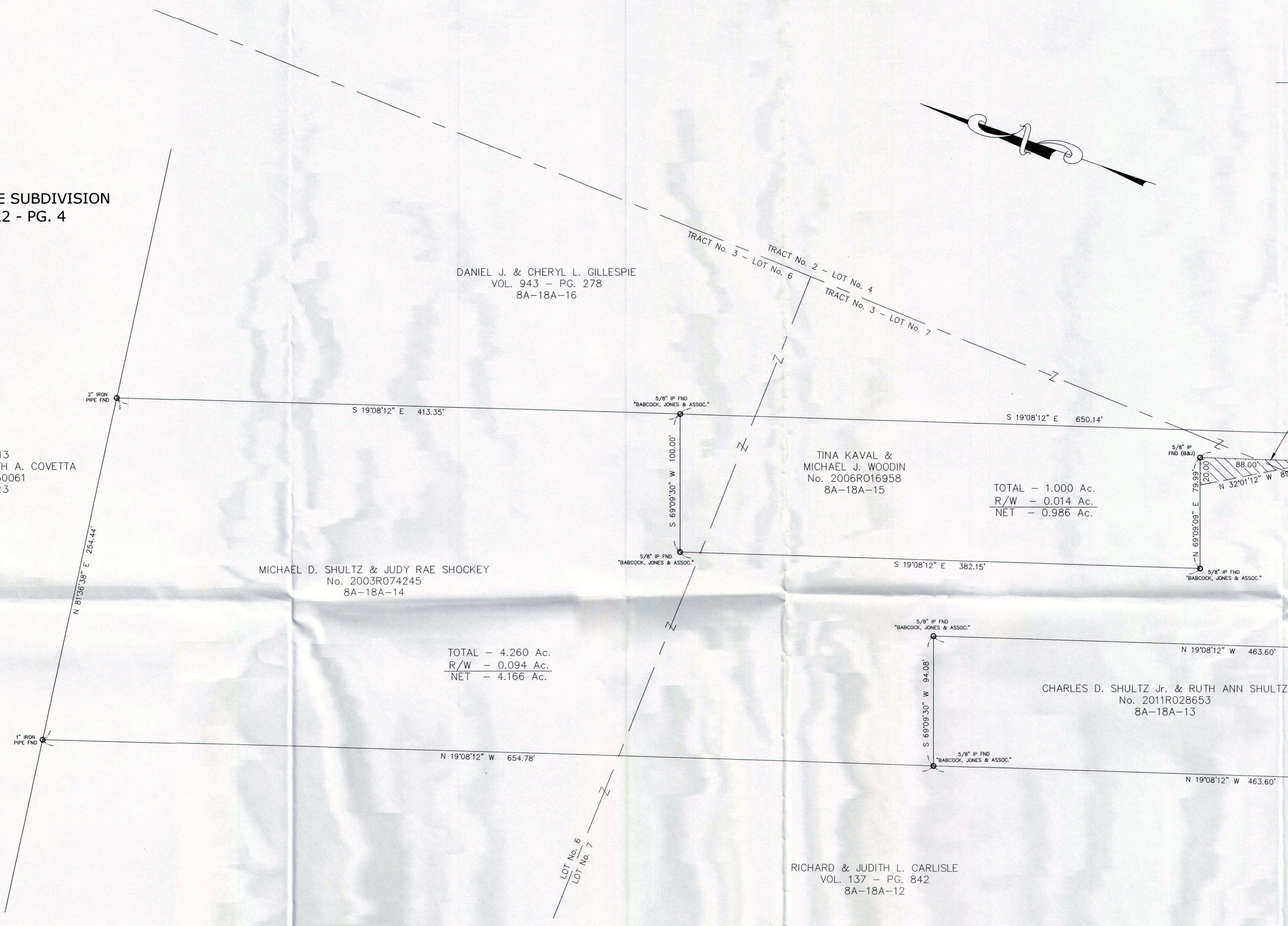
TOTAL - 1.000 Ac.
R/W - 0.014 Ac.
NET - 0.986 Ac.

MICHAEL D. SHULTZ & JUDY RAE SHOCKEY
No. 2003R074245
8A-18A-14

TOTAL - 4.260 Ac.
R/W - 0.094 Ac.
NET - 4.166 Ac.

CHARLES D. SHULTZ Jr. & RUTH ANN SHULTZ
No. 2011R028653
8A-18A-13

RICHARD & JUDITH L. CARLISLE
VOL. 137 - PG. 842
8A-18A-12



NOTE: ALL IRON PINS SET ARE
5/8" X 30" AND ARE CAPPED
BABCOCK LAND SURVEYORS

REV NO.	DESCRIPTION	DATE	BY	CHK'D

BABCOCK LAND SURVEYORS
SURVEYORS & LAND PLANNERS
PAINESVILLE OHIO 44077
babcocklandsurveyors@yahoo.com

DATE	11/5/12
DESIGN BY	W.B.
DRAWN BY	B.P.
APPROVED BY	W.B.
CREW CHIEF	R.B.

PART OF
CONCORD T